

# TIME TO EXPLORE

Cleveland Metroparks

## 2018 Plan Updates

MILL STREAM · ROCKY RIVER  
· BRADLEY WOODS ·  
HUNTINGTON

December 20, 2018





# Planning Process

Work Session 1	Weds. Jan. 31 <sup>st</sup>
Concept Charettes	Mar. 7 <sup>th</sup> and 19 <sup>th</sup>
Work Session 2	Concept 1 Tues. Mar. 27 <sup>th</sup>
Work Session 3	Concept 2 Mon. June 25 <sup>th</sup>
Leadership / Chiefs Review	July
Outside Stakeholder Meetings	July / Aug / Sept
Draft to Board	August
<i>Open Houses</i>	<i>September</i>
Work Session 4 / Final Review	November
<b><u>Final to Board</u></b>	<b><u>December 20<sup>th</sup></u></b>

**34** Internal Experts

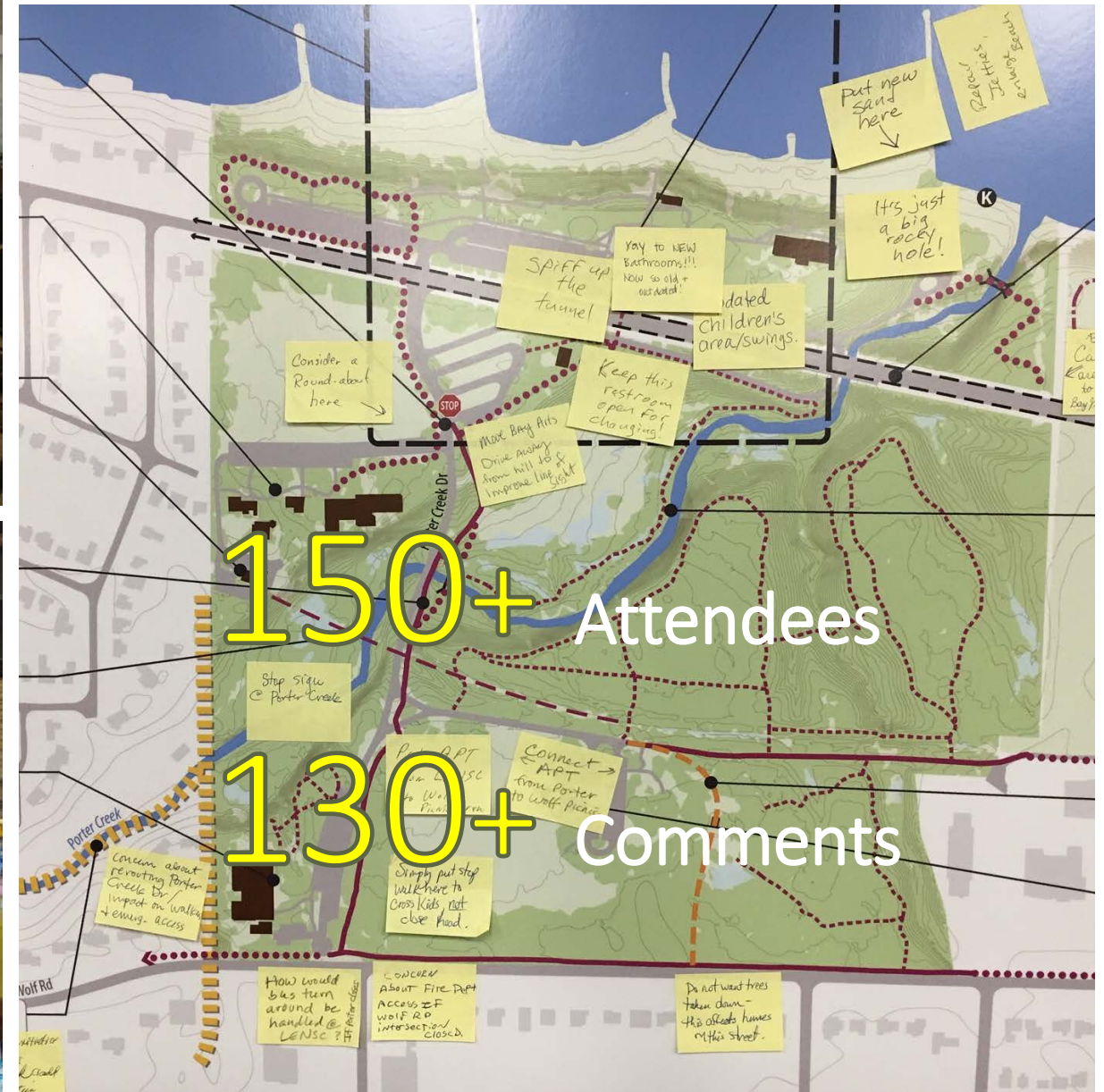
**30** Visits to Leaders  
and Outreach to  
Organizations

**6** Public Open Houses





# SEPTEMBER PUBLIC OPEN HOUSES







# Overall Common Themes



Trails – bridle, APT, natural surface, mountain bike

Minimizing bike/horse/car conflicts along Valley Parkway (Mastick) and elsewhere



Better bike and pedestrian connections, particularly neighborhood links



Support for resource protection (Drake Rd., Bonnie Park, Mastick, Porter Creek)



Parking – capacity, horse trailers, location, impacts, storm water best practices



Amenities – facility improvements plus benches, overlooks, restrooms, drinking fountains, etc.





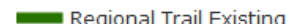
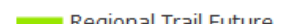
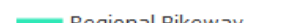
# CUYAHOGA greenways

## Legend

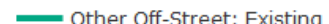
### CGW: Priority Projects (Full Route)

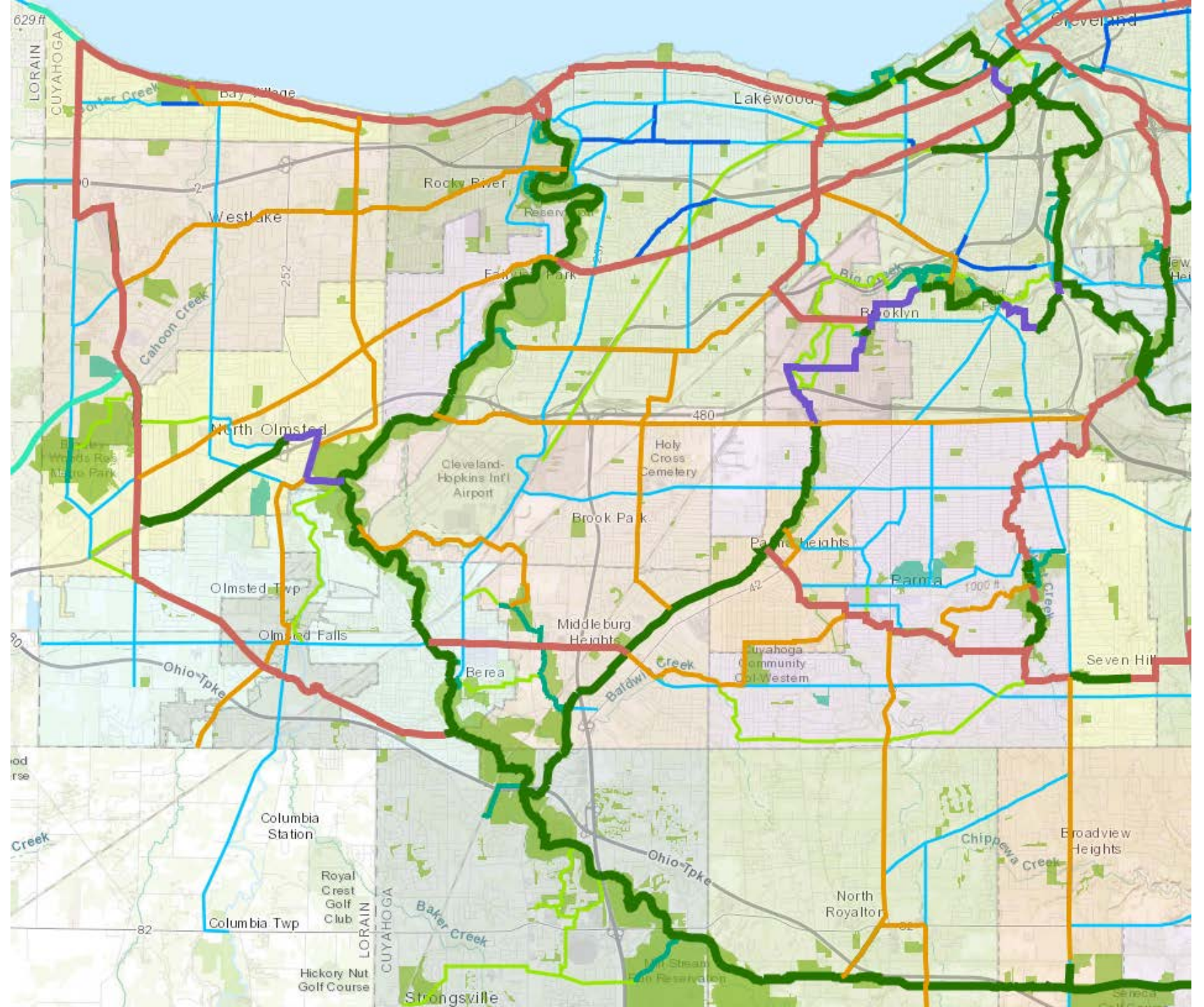
-  Critical Gap
-  Regional Link
-  Key Route

### CGW: Regional Network (Detail)

-  Regional Trail Existing
-  Regional Trail Future
-  Regional Bikeway

### CGW: Existing Off-Road

-  Other Off-Street: Existing





# HUNTINGTON

## Common Themes

### Optimize lakefront

Restroom and concession replacement / relocation

Lakefront accessibility (ramp to beach)

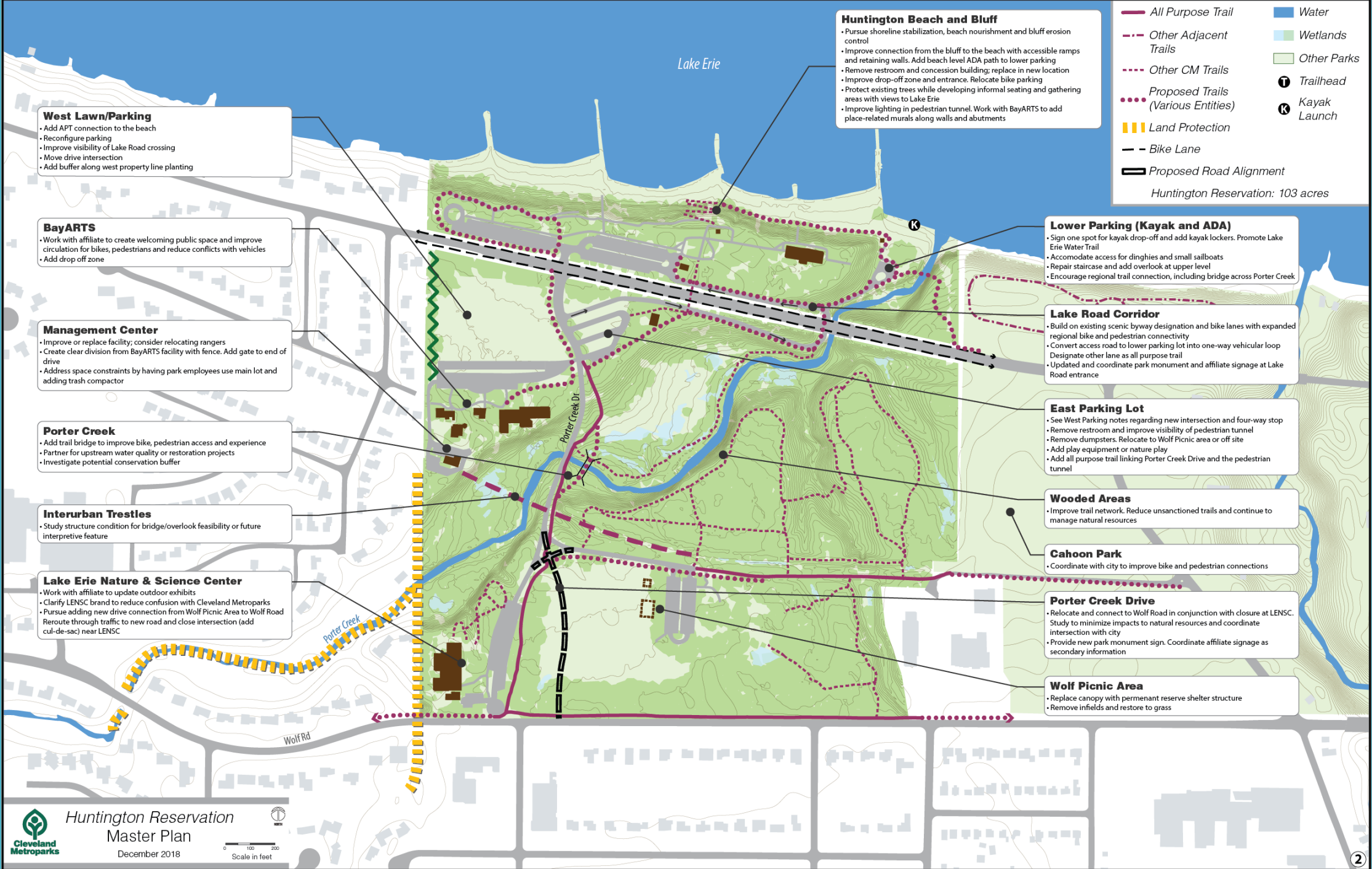
Beach stabilization / bluff stewardship

Paddler access

Better access for **bikes and pedestrians** through the park (bridges over Porter Creek, links to east, improved nature trails)

**Porter Creek Drive** four-way stop at BayARTS; relocate segment to new intersection with Wolf Rd. (reduce through traffic at LENSOC)





**Huntington Beach and Bluff**

- Pursue shoreline stabilization, beach nourishment and bluff erosion control
- Improve connection from the bluff to the beach with accessible ramps and retaining walls. Add beach level ADA path to lower parking
- Remove restroom and concession building; replace in new location
- Improve drop-off zone and entrance. Relocate bike parking
- Protect existing trees while developing informal seating and gathering areas with views to Lake Erie
- Improve lighting in pedestrian tunnel. Work with BayARTS to add place-related murals along walls and abutments

- All Purpose Trail
  - - - Other Adjacent Trails
  - - - - - Other CM Trails
  - Proposed Trails (Various Entities)
  - Land Protection
  - - - Bike Lane
  - Proposed Road Alignment
  - █ Water
  - Wetlands
  - Other Parks
  - ⓘ Trailhead
  - Ⓚ Kayak Launch
- Huntington Reservation: 103 acres

**West Lawn/Parking**

- Add APT connection to the beach
- Reconfigure parking
- Improve visibility of Lake Road crossing
- Move drive intersection
- Add buffer along west property line planting

**BayARTS**

- Work with affiliate to create welcoming public space and improve circulation for bikes, pedestrians and reduce conflicts with vehicles
- Add drop off zone

**Management Center**

- Improve or replace facility; consider relocating rangers
- Create clear division from BayARTS facility with fence. Add gate to end of drive
- Address space constraints by having park employees use main lot and adding trash compactor

**Porter Creek**

- Add trail bridge to improve bike, pedestrian access and experience
- Partner for upstream water quality or restoration projects
- Investigate potential conservation buffer

**Interurban Trestles**

- Study structure condition for bridge/overlook feasibility or future interpretive feature

**Lake Erie Nature & Science Center**

- Work with affiliate to update outdoor exhibits
- Clarify LENSAC brand to reduce confusion with Cleveland Metroparks
- Pursue adding new drive connection from Wolf Picnic Area to Wolf Road
- Reroute through traffic to new road and close intersection (add cul-de-sac) near LENSAC

**Lower Parking (Kayak and ADA)**

- Sign one spot for kayak drop-off and add kayak lockers. Promote Lake Erie Water Trail
- Accommodate access for dinghies and small sailboats
- Repair staircase and add overlook at upper level
- Encourage regional trail connection, including bridge across Porter Creek

**Lake Road Corridor**

- Build on existing scenic byway designation and bike lanes with expanded regional bike and pedestrian connectivity
- Convert access road to lower parking lot into one-way vehicular loop. Designate other lane as all purpose trail
- Updated and coordinate park monument and affiliate signage at Lake Road entrance

**East Parking Lot**

- See West Parking notes regarding new intersection and four-way stop
- Remove restroom and improve visibility of pedestrian tunnel
- Remove dumpsters. Relocate to Wolf Picnic area or off site
- Add play equipment or nature play
- Add all purpose trail linking Porter Creek Drive and the pedestrian tunnel

**Wooded Areas**

- Improve trail network. Reduce unsanctioned trails and continue to manage natural resources

**Cahoon Park**

- Coordinate with city to improve bike and pedestrian connections

**Porter Creek Drive**

- Relocate and connect to Wolf Road in conjunction with closure at LENSAC. Study to minimize impacts to natural resources and coordinate intersection with city
- Provide new park monument sign. Coordinate affiliate signage as secondary information

**Wolf Picnic Area**

- Replace canopy with permanent reserve shelter structure
- Remove infields and restore to grass





# BRADLEY WOODS

## Common Themes

High value natural resources - continue education regarding rare swamp forest ecosystem

Improve access for bikes and pedestrians (link to Bradley; potential use of former road as trail (southeast corner))

Refresh Bunn's Lake area with paved trail and upgrades to amenities (benches and deck)



**Management Center**

- Connect to city sewer system
- Pave, stripe and sign service drive to allow use as an all purpose trail
- Link to neighborhood to north and Center Ridge Road and Crocker Road

**Quarry Rock Loop Trail**

- Promote this existing high quality trail
- Improve awareness of old growth trees and remnants of historic quarry

**Main Entrance**

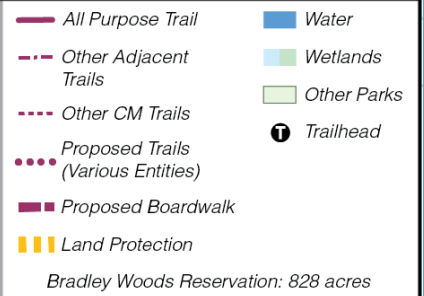
- Add crosswalk and connect all purpose trail along Bradley Road to interior of reservation utilizing segments of existing trail; add boardwalk in wet areas
- Obtain street address for operations, transits, and emergency needs

**Swamp Forest Area**

- Continue resource management program

**Overall Considerations**

- Pursue additional opportunities to protect rare lake plain forest and associated hydrology
- Partner to improve trail connections to neighborhoods and regional links to Rocky River Reservation and Lorain Metroparks - refer to Cuyahoga Greenways Plan



- All Purpose Trail (Solid dark red line)
- Other Adjacent Trails (Dashed dark red line)
- Other CM Trails (Dotted dark red line)
- Proposed Trails (Various Entities) (Dotted red line)
- Proposed Boardwalk (Dashed yellow line)
- Land Protection (Yellow hatched area)
- Water (Blue area)
- Wetlands (Light green area)
- Other Parks (Light green area)
- Trailhead (Black circle with 'T')

Bradley Woods Reservation: 828 acres

**Codrington Shelterhouse**

- Address maintenance repairs

**Bunn's Lake**

- Pave trail. Adjust benches and replace decks

**Southeast Trail Connection**

- Explore using old roadway locations to connect interior of park to adjacent neighborhood and Lorain Road
- Provide wayfinding at existing trailhead (next to North Olmsted Fire Station)

Trail Link to Rocky River Reservation





# MILL STREAM RUN Common Themes

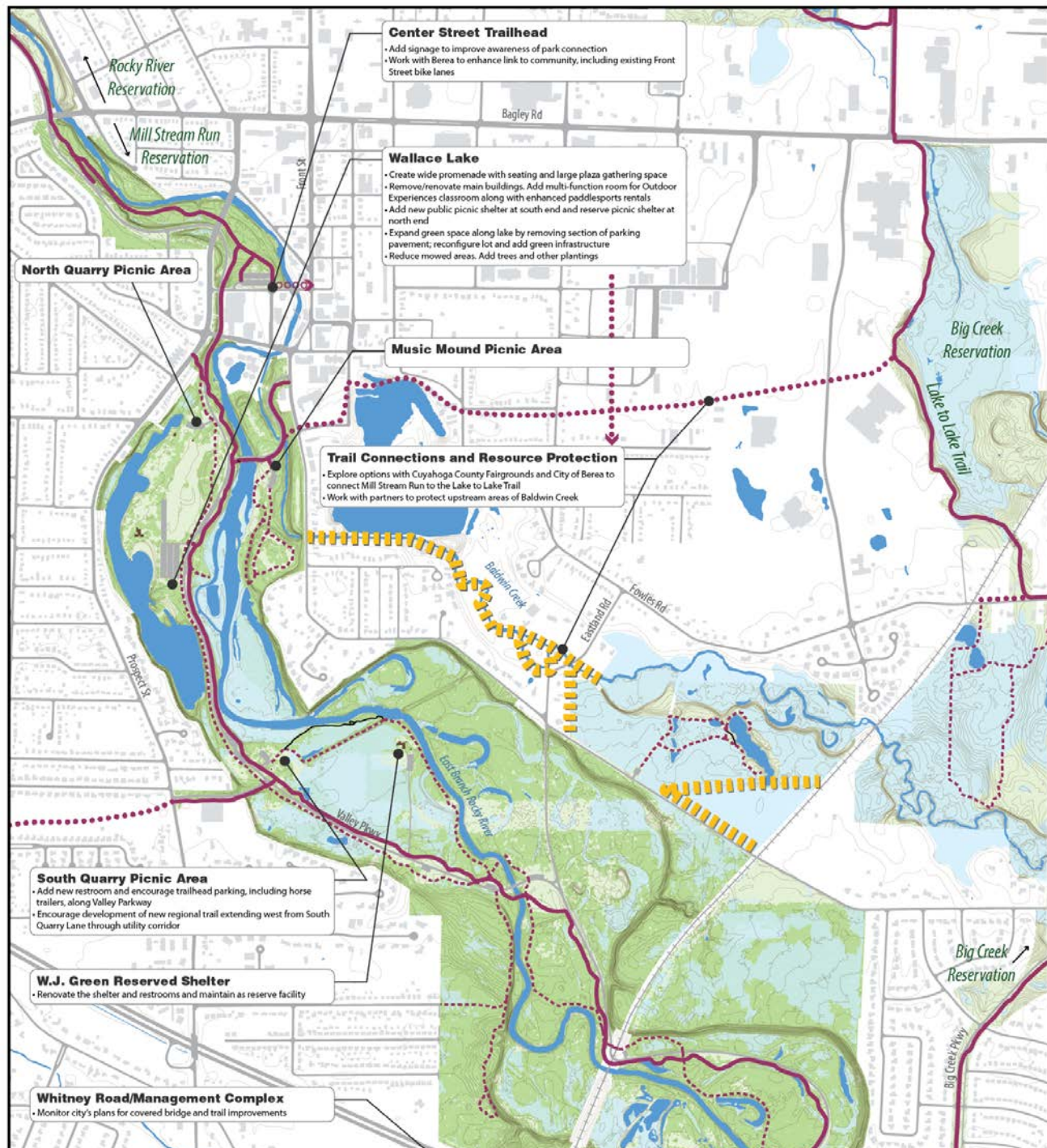
Update and improve Wallace Lake facilities

Restoration at Bonnie Park

Trail connections to southwest Cuyahoga County  
(from Chalet or Royalview) and north from  
Pawpaw Picnic Area

Supplement parking and add changing areas at  
Royalview; renovate upper shelter area





**Center Street Trailhead**

- Add signage to improve awareness of park connection
- Work with Berea to enhance link to community, including existing Front Street bike lanes

**Wallace Lake**

- Create wide promenade with seating and large plaza gathering space
- Remove/renovate main buildings. Add multi-function room for Outdoor Experiences classroom along with enhanced paddlesports rentals
- Add new public picnic shelter at south end and reserve picnic shelter at north end
- Expand green space along lake by removing section of parking pavement; reconfigure lot and add green infrastructure
- Reduce mowed areas. Add trees and other plantings

**North Quarry Picnic Area**

**Music Mound Picnic Area**

**Trail Connections and Resource Protection**

- Explore options with Cuyahoga County Fairgrounds and City of Berea to connect Mill Stream Run to the Lake to Lake Trail
- Work with partners to protect upstream areas of Baldwin Creek

**South Quarry Picnic Area**

- Add new restroom and encourage trailhead parking, including horse trailers, along Valley Parkway
- Encourage development of new regional trail extending west from South Quarry Lane through utility corridor

**W.J. Green Reserved Shelter**

- Renovate the shelter and restrooms and maintain as reserve facility

**Whitney Road/Management Complex**

- Monitor city's plans for covered bridge and trail improvements

Big Creek Reservation

Big Creek Reservation

Rocky River Reservation

Mill Stream Run Reservation

Lake to Lake Trail

Bagley Rd

Baldwin Creek

Eastland Rd

Fowles Rd

Prophet St

Valley Pkwy

East Branch Rocky River

Big Creek Pkwy



### Whitney Road/Management Complex

- Monitor city's plans for covered bridge and trail improvements

### Wintergreen Cabin

- Develop a natural surface trail loop
- Remove excess bootleg trails
- Add additional parking along existing bay as needed

### Overall Considerations

- Improve accessibility and update facilities
- Work with partners to improve neighborhood and regional trail connections
- Protect water resources

— All Purpose Trail

— Water

- - - Other Adjacent Trails

— Wetlands

- - - Other CM Trails

— Other Parks

••• Proposed Trails (Various Entities)

ⓘ Trailhead

||| Land Protection

Mill Stream Run Reservation: 3,484 acres

### Fair Road Field

- Improve off road parking
- Add crosswalk to Wintergreen Cabin



## Mill Stream Run Reservation Master Plan

December 2018

0 100 200  
Scale in feet



1





**Ranger Lake**  
 • Continue to allow fishing  
 • Upgrade parking area

**Albion Woods Picnic Area**  
 • Add small shelter for day use lot  
 • Provide horse trailer parking and link to bridle trail

**Bonnie Park Picnic Area**  
 • Reconnect site hydrology. Restore undeveloped portions of site to high quality wetland  
 • Restore fish passage along East Branch of Rocky River and remove impairments through implementation of WRRSP grant  
 • Interpret the history of the site and importance of the river to early settlers  
 • Maintain bike and pedestrian trails or boardwalks through site  
 • Maintain main parking area, historic park shelter and restroom facility

**The Chalet**  
 • Expand summer use with play area and picnic tables; keep stairs open for fitness use  
 • Improve parking - pavement and stormwater retrofits  
 • Study Chalet structures and uses - renovate or replace  
 • Consider trail connection  
 • Consider ice rink  
 • Add all purpose trail link to Valley Parkway (add trail bridge or expand existing bridge)

**Strongsville Recreation and Senior Center**  
 • Consider partnering for trail link if supported by community (see Cuyahoga Greenway Plan)

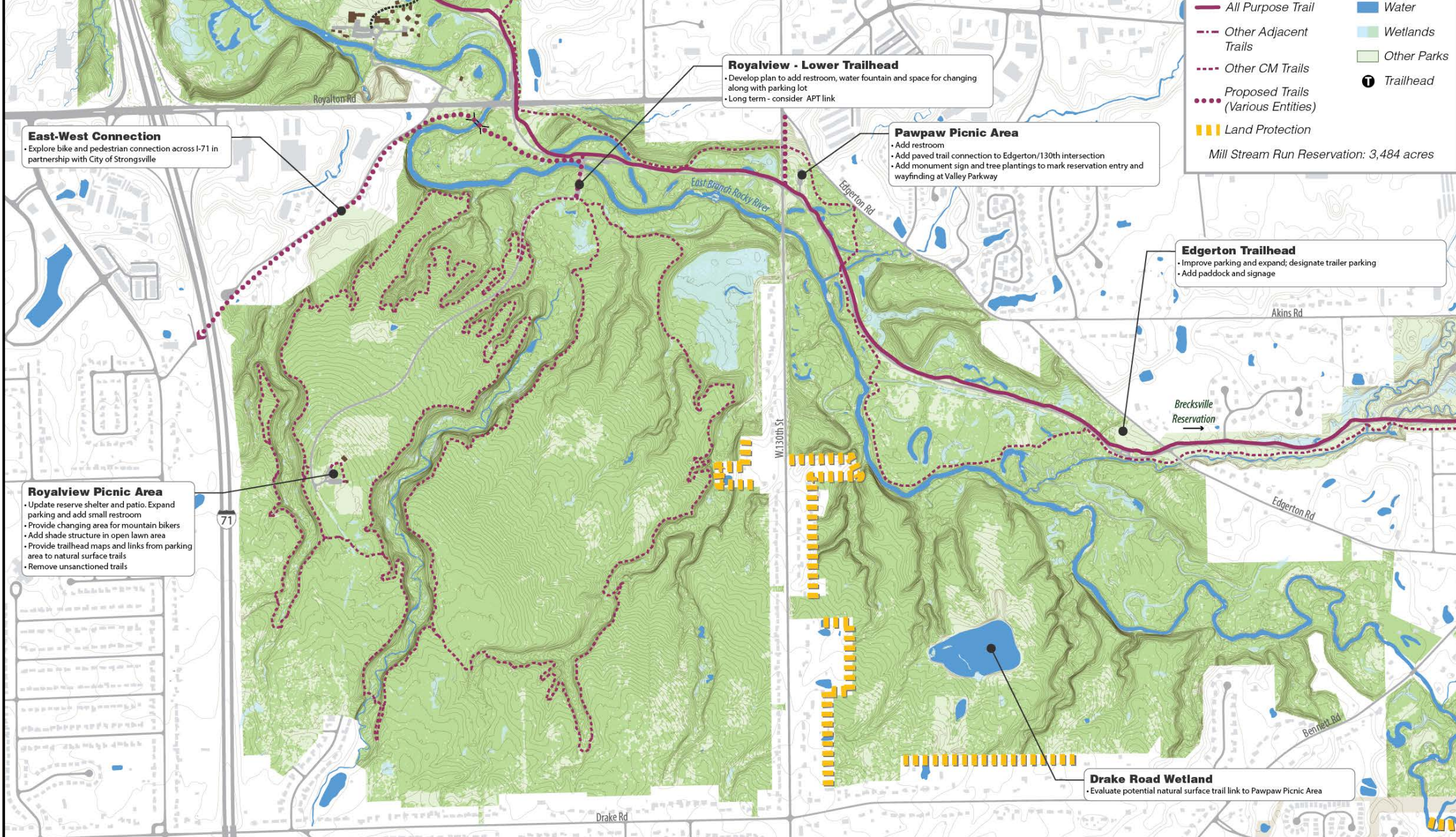
**Strongsville Wildlife Area**

**Camp Cheerful**  
 • Relocate entry drive to Valley Parkway when need arises

	All Purpose Trail		Water
	Other Adjacent Trails		Wetlands
	Other CM Trails		Other Parks
	Proposed Trails (Various Entities)		Trailhead
	Land Protection		

Mill Stream Run Reservation: 3,484 acres





— All Purpose Trail ■ Water  
- - - Other Adjacent Trails ■ Wetlands  
· · · Other CM Trails ■ Other Parks  
· · · Proposed Trails (Various Entities) T Trailhead  
 Land Protection

Mill Stream Run Reservation: 3,484 acres

**East-West Connection**

- Explore bike and pedestrian connection across I-71 in partnership with City of Strongsville

**Royalview - Lower Trailhead**

- Develop plan to add restroom, water fountain and space for changing along with parking lot
- Long term - consider APT link

**Pawpaw Picnic Area**

- Add restroom
- Add paved trail connection to Edgerton/130th intersection
- Add monument sign and tree plantings to mark reservation entry and wayfinding at Valley Parkway

**Edgerton Trailhead**

- Improve parking and expand; designate trailer parking
- Add paddock and signage

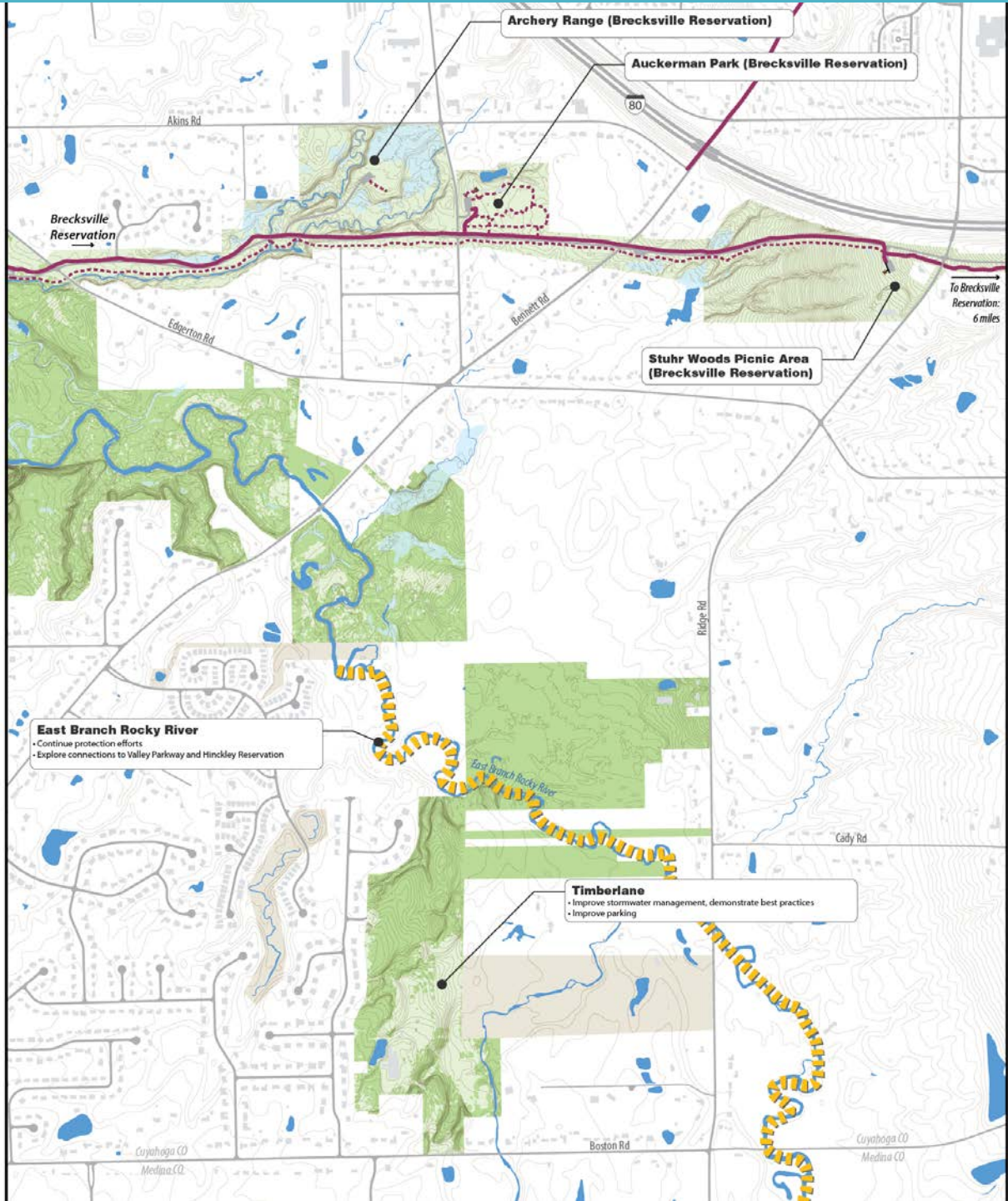
**Royalview Picnic Area**

- Update reserve shelter and patio. Expand parking and add small restroom
- Provide changing area for mountain bikers
- Add shade structure in open lawn area
- Provide trailhead maps and links from parking area to natural surface trails
- Remove unsanctioned trails

**Drake Road Wetland**

- Evaluate potential natural surface trail link to Pawpaw Picnic Area





**Archery Range (Brecksville Reservation)**

**Auckerman Park (Brecksville Reservation)**

**Brecksville Reservation**

To Brecksville  
Reservation:  
6 miles

**Stuhr Woods Picnic Area  
(Brecksville Reservation)**

**East Branch Rocky River**  
• Continue protection efforts  
• Explore connections to Valley Parkway and Hinckley Reservation

**Timberlane**  
• Improve stormwater management, demonstrate best practices  
• Improve parking

Cuyahoga CO  
Medina CO

Cuyahoga CO  
Medina CO