

SOUTH CHAGRIN RESERVATION

PARK PLAN

NOVEMBER 2024

- Proposed Trail
- Land Protection
- Proposed Improvement Site
- CM All Purpose Trail
- Other Paved Trail
- Buckeye Trail
- Other Trails
- Conserved; No Public Access
- Wetland Enhancement Project Area
- Water
- Wetland

ESTHER & NATHAN RZEPKA PARK (SEE AREA PLAN)

- Adopt restoration plan that includes future trail network and long term opportunities for development of site features
- Connect to Hawthorn Ridge Picnic Area

HAWTHORN RIDGE PICNIC AREA (SEE AREA PLAN)

- Add trail connection to Rzepka Park. Work with Natural Resources to identify location
- Expand existing parking lot, add restroom, and develop four season rental facility

SLEDDING HILL

SHADOW LAKE AREA

- Add green infrastructure improvements and accessible dock and overlook features
- Evaluate long term solutions to relocate head-in parking along Hawthorn Parkway
- Explore bird-friendly mowing regime and potential trail access (long term) with adjacent land owner

RICHMOND ROAD TRAIL

- Pending all purpose trail connection to Bedford Reservation funded through Clean Ohio, improvements roadway funded through OPWC and managed by Glenwillow

EXISTING GLENWILLOW TRAIL

HAWTHORN PARKWAY

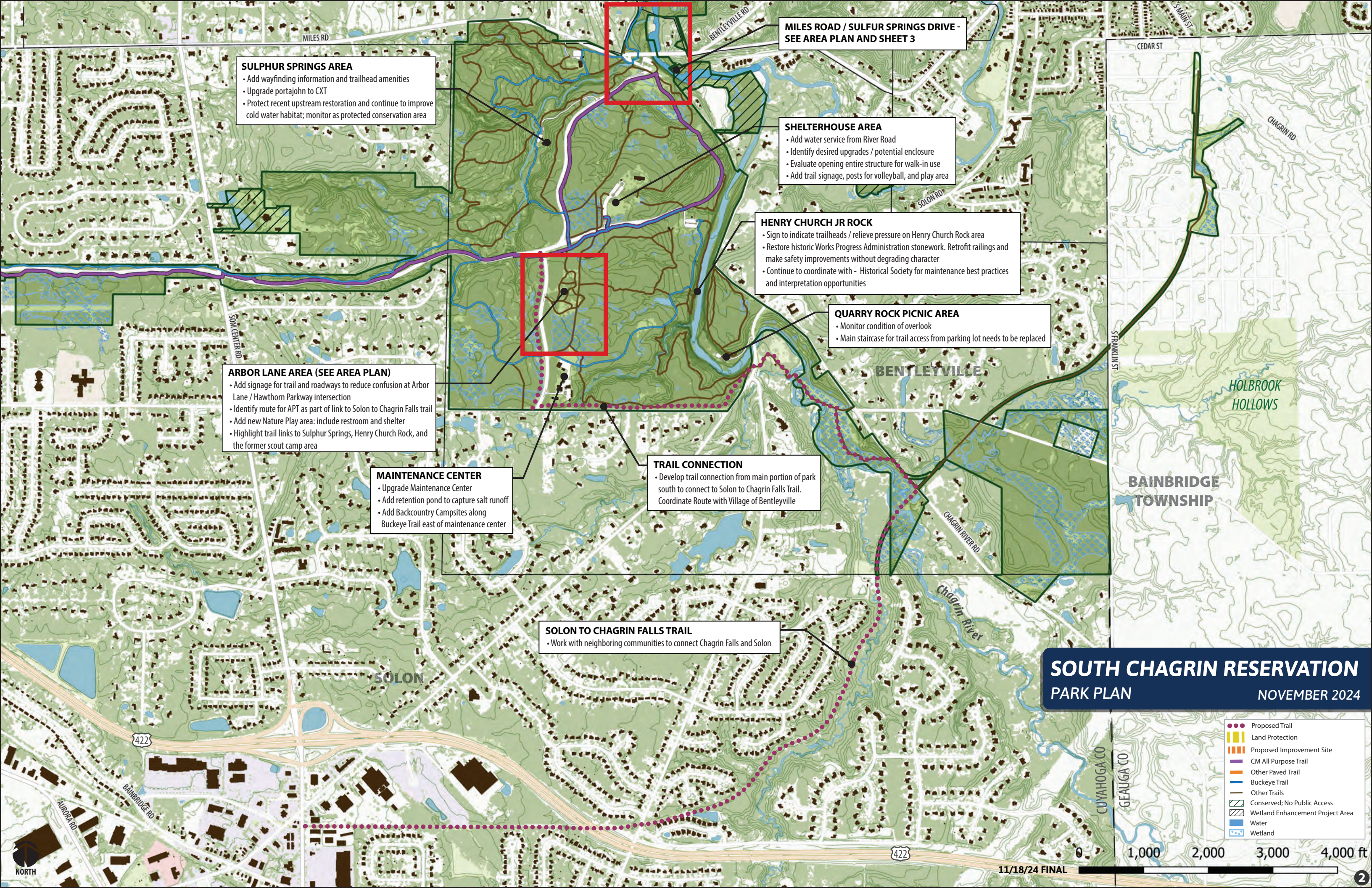
- Implement restoration plan

HARPER RIDGE PICNIC AREA

- Add site features and expand parking, including trailhead parking outside gate

RESERVATION-WIDE

- South Chagrin is a legacy park, established in 1925. The park includes 8 archaeological sites and 22 additional cultural and historic resources, including structures constructed by the Works Progress Administration and listed on the National Register of Historic Places. Continued investment in and stewardship of these features is a priority
- Focus on wayfinding, including park entryways and orientation
- Highlight opportunities to view and access the Chagrin River and educate park users about status as a State Scenic River
- Provide access to water and electric to expand visitor amenities and modernize available services
- Review overall trail system and use designations. Add stream crossings at priority locations. Enforce inappropriate uses (off-trail, dogs off leash, and equestrian)
- Continue to prioritize water quality, resource protection, and restoration opportunities while addressing climate change challenges such as invasive species and threats to ecological systems
- The park includes more than 11 miles of the Buckeye Trail. Address maintenance and wayfinding and consider amenities to complement this statewide hiking trail. Reroute the Buckeye Trail off road where feasible
- Continue to monitor and enforce encroachments and unapproved actions on park property



SULPHUR SPRINGS AREA

- Add wayfinding information and trailhead amenities
- Upgrade portajohn to CXT
- Protect recent upstream restoration and continue to improve cold water habitat; monitor as protected conservation area

MILES ROAD / SULFUR SPRINGS DRIVE - SEE AREA PLAN AND SHEET 3

SHELTERHOUSE AREA

- Add water service from River Road
- Identify desired upgrades / potential enclosure
- Evaluate opening entire structure for walk-in use
- Add trail signage, posts for volleyball, and play area

HENRY CHURCH JR ROCK

- Sign to indicate trailheads / relieve pressure on Henry Church Rock area
- Restore historic Works Progress Administration stonework. Retrofit railings and make safety improvements without degrading character
- Continue to coordinate with - Historical Society for maintenance best practices and interpretation opportunities

QUARRY ROCK PICNIC AREA

- Monitor condition of overlook
- Main staircase for trail access from parking lot needs to be replaced

ARBOR LANE AREA (SEE AREA PLAN)

- Add signage for trail and roadways to reduce confusion at Arbor Lane / Hawthorn Parkway intersection
- Identify route for APT as part of link to Solon to Chagrin Falls trail
- Add new Nature Play area: include restroom and shelter
- Highlight trail links to Sulphur Springs, Henry Church Rock, and the former scout camp area

MAINTENANCE CENTER

- Upgrade Maintenance Center
- Add retention pond to capture salt runoff
- Add Backcountry Campsites along Buckeye Trail east of maintenance center

TRAIL CONNECTION

- Develop trail connection from main portion of park south to connect to Solon to Chagrin Falls Trail. Coordinate Route with Village of Bentleyville

SOLON TO CHAGRIN FALLS TRAIL

- Work with neighboring communities to connect Chagrin Falls and Solon

SOUTH CHAGRIN RESERVATION PARK PLAN
NOVEMBER 2024

- Proposed Trail
- Land Protection
- Proposed Improvement Site
- CM All Purpose Trail
- Other Paved Trail
- Buckeye Trail
- Other Trails
- Conserved; No Public Access
- Wetland Enhancement Project Area
- Water
- Wetland



SOUTH CHAGRIN RESERVATION

PARK PLAN

NOVEMBER 2024

- Proposed Trail
- Land Protection
- Proposed Improvement Site
- CM All Purpose Trail
- Other Paved Trail
- Buckeye Trail
- Other Trails
- Conserved; No Public Access
- Wetland Enhancement Project Area
- Water
- Wetland

- APT on Existing Bridle Trail
- APT New Route
- Existing Bridle Trail
- Rerouted Bridle Trail (some on nature trails)

EMERALD NECKLACE APT

- Extend the Emerald Necklace All Purpose Trail (APT) to provide a trail facility from the northernmost point of South Chagrin (Polo Field) to the existing APT along Sulphur Springs Drive By 2030 this new APT, along with pending links at Richmond Rd and the Sagamore Connector, will result in a 50+ mile continuous facility linking the Polo Field to the northern point of Rocky River Reservation. APT will primarily parallel Chagrin River Road with an off-road alignment from Jackson Field to Chagrin Boulevard
- Consider gravel surface for new portions of APT within South Chagrin

POLO FIELD - SEE AREA PLAN

- Continue to maintain field, loop track, and facilities in north portion of the area and utilize for permitted special events
- Improve trail connections and views and access to river, including kayak access near Woodland Road
- Consider wifi for this area
- Add water service and convert restrooms to flush facilities
- Reference Area Plan for proposed parking, river access, nature play area, and trail layout and for potential equestrian enhancements and uses
- Continue to serve equestrian users

OLD FIELD & OXBOW

- Improve existing gravel trail
- Add signs and trail link to/from Western Reserve Land Conservancy's Forest Ridge Preserve (3 miles of hiking trail)

CHAGRIN BOULEVARD

- Add wayfinding to designated river access for paddling and fishing as well as along roadway and across bridge to the Chagrin Valley Overlook Trail
- Pave parking north of Chagrin Boulevard, and expand if needed

JACKSON FIELD

- Continue habitat management at Jackson Field
- Add CXT to facilitate use as trailhead

CHAGRIN RIVER SCENIC AREA

- Highlight the resource value of the Chagrin River corridor and protect critical species

WILLEY CREEK AREA

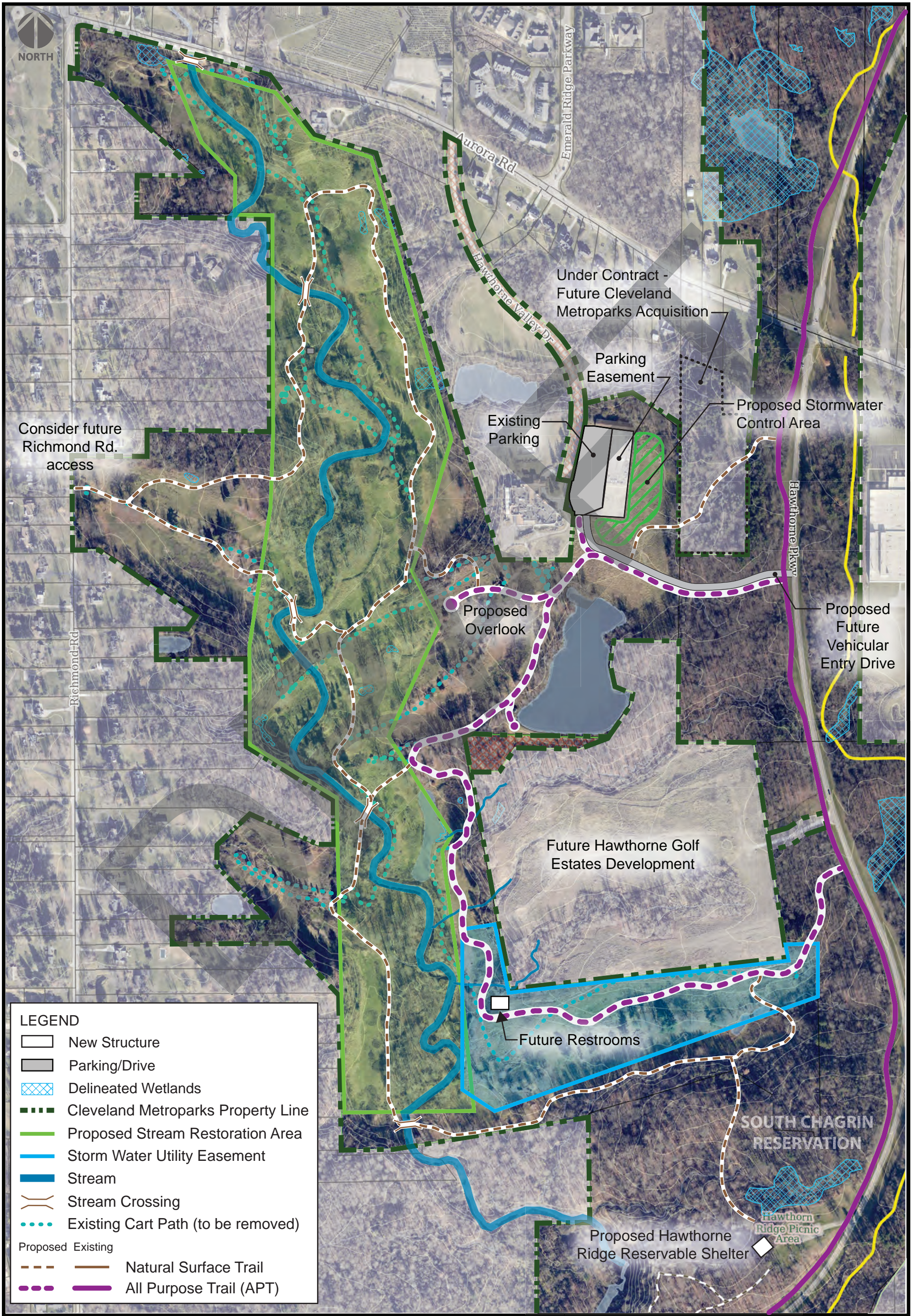
- Add future bridge for bikes and pedestrians
- Maintain restoration work and control invasive species

LOOK ABOUT LODGE

- Restroom upgrade needed; explore opportunities for flush facility.
- Address necessary repairs to historic structure
- Improve trail grades, layout, and wayfinding in this quadrant of the park
- Communicate opportunities for programs at site and online.

MILES ROAD / SULPHUR SPRINGS DR. INTERSECTION (SEE AREA PLAN)

- Address entry signage and landscaping in conjunction with relocated park entrance road. Expand parking
- Create orientation area with park information kiosk
- Address trail routes, bridges, and roadway crossings to minimize conflicts and provide cohesive systems for all user types



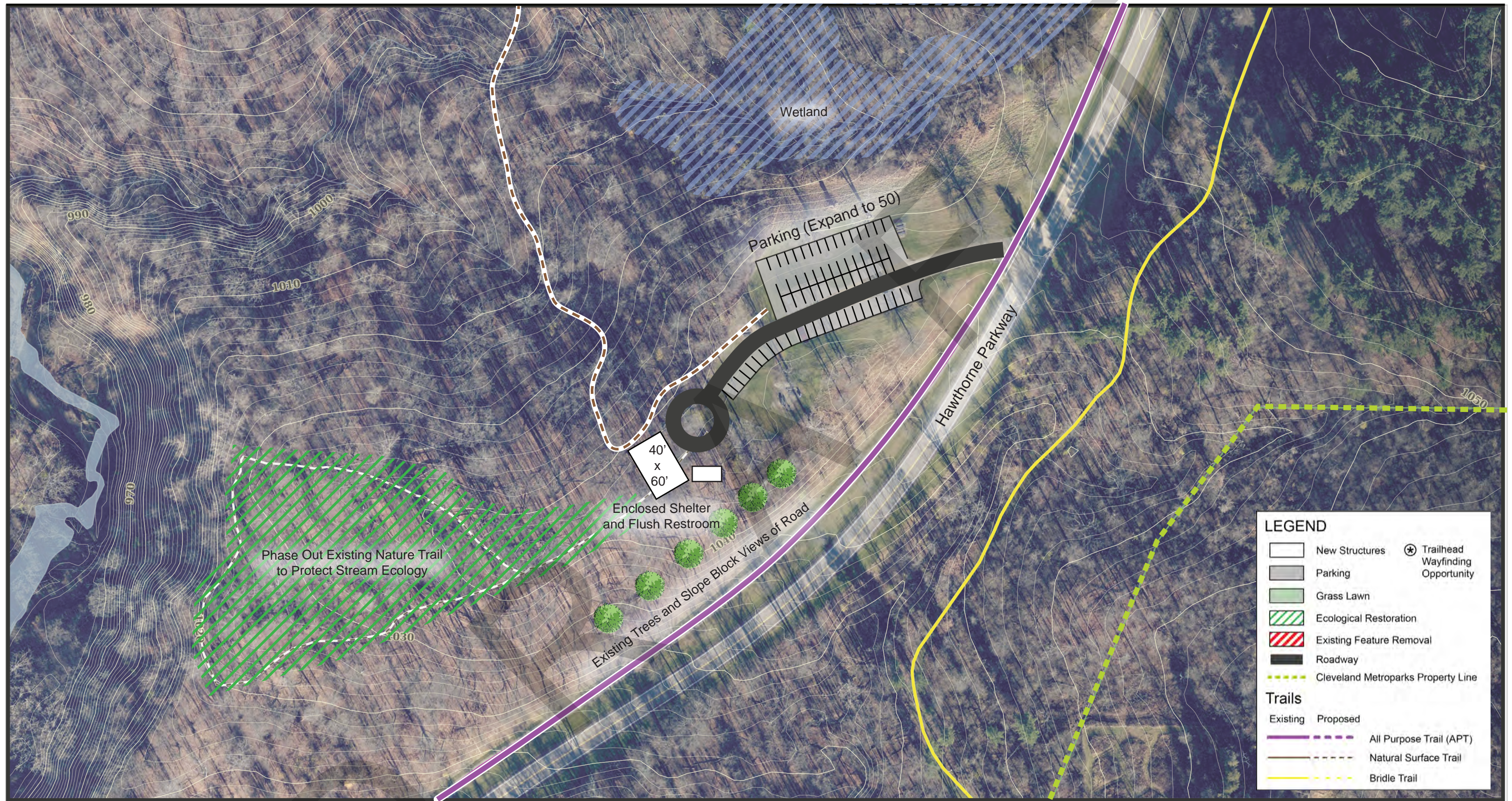
Esther & Nathan Rzepka Park

South Chagrin Reservation

Preliminary Site Plan DRAFT



Trail continues to
Esther and Nathan Rzepka Park



Hawthorne Ridge Picnic Area

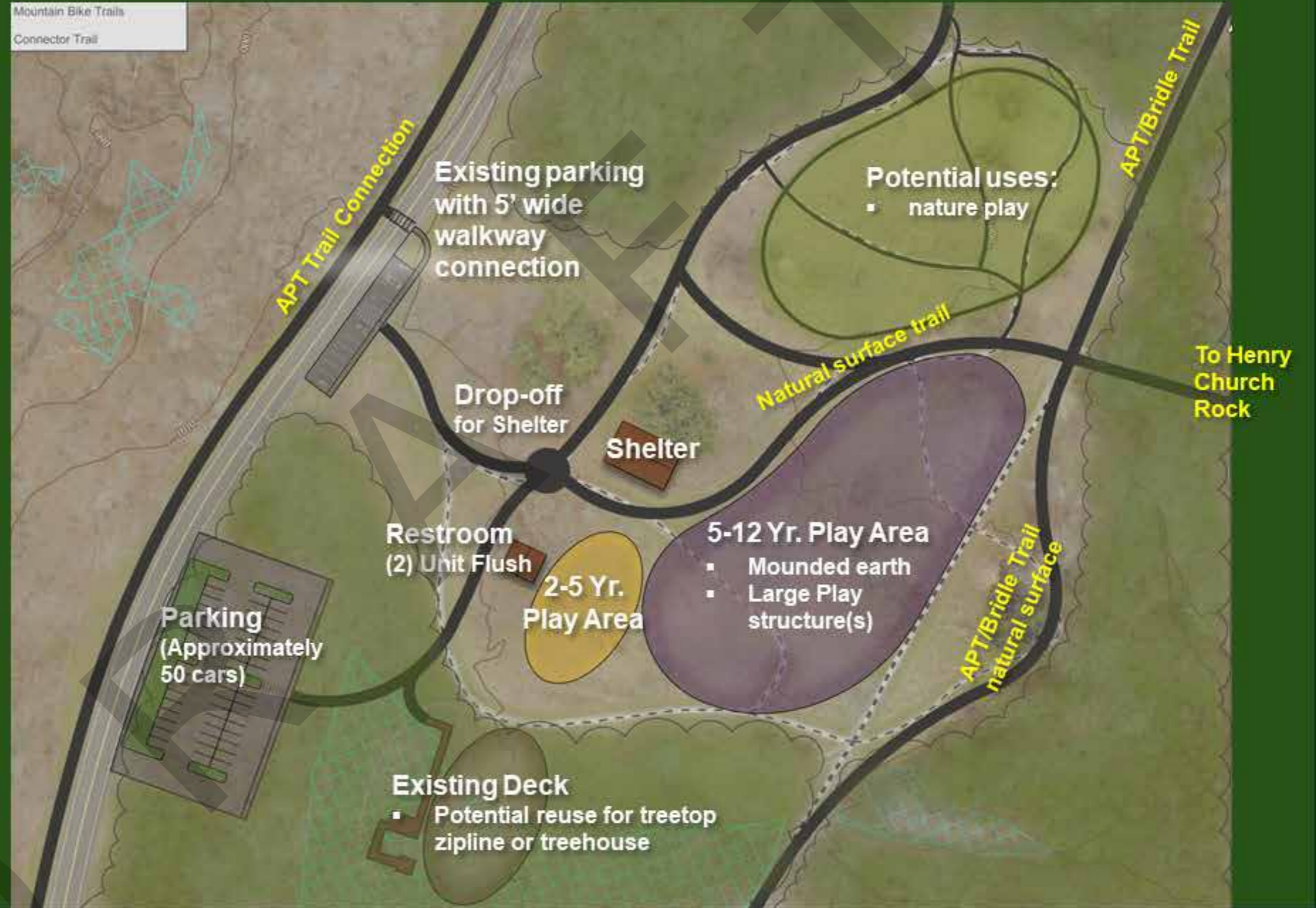
DRAFT

South Chagrin Reservation 1" = 100'



Arbor Picnic Area conceptual site plan

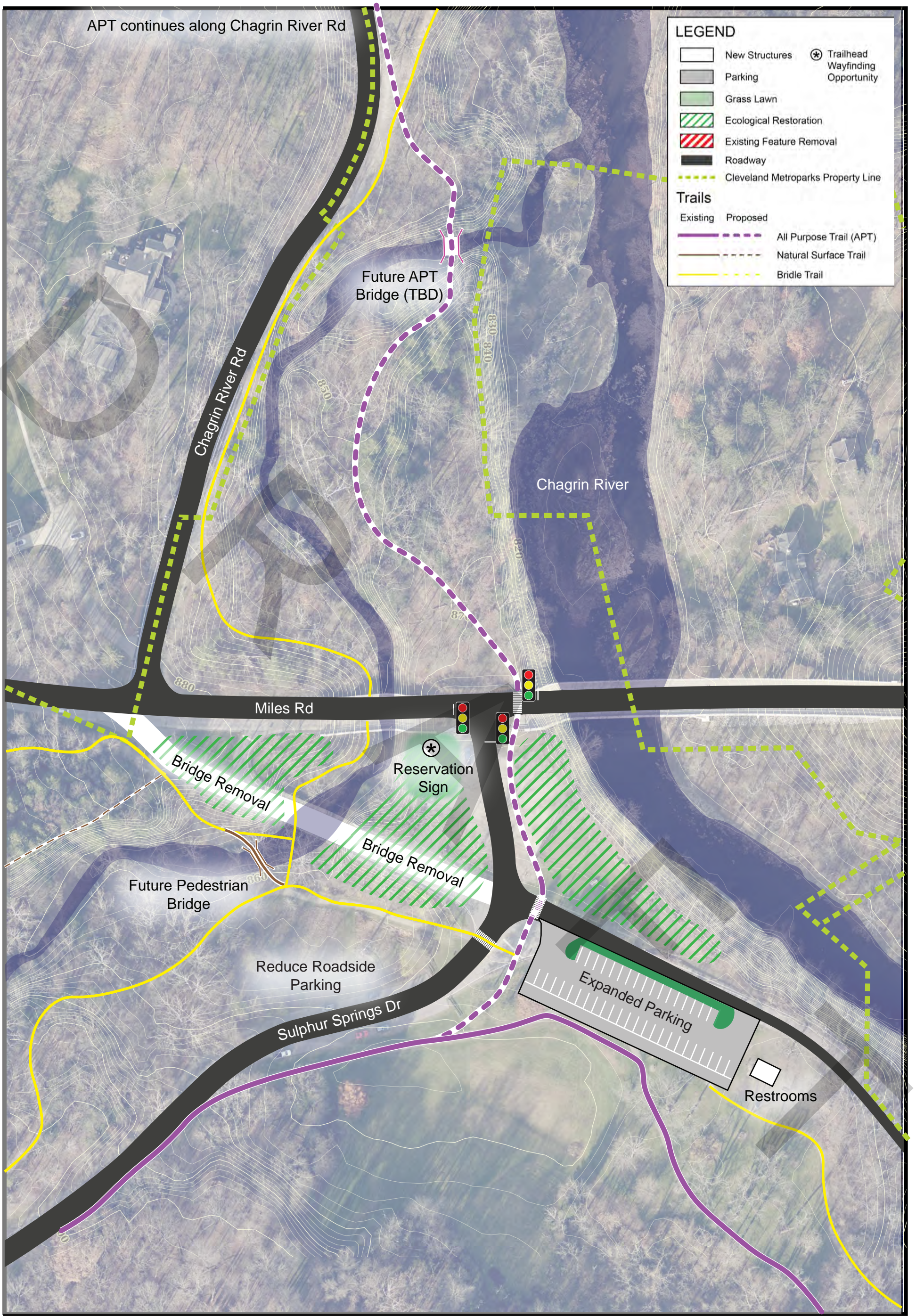
- ❑ Layout avoids existing trees of importance
- ❑ Avoids wetlands
- ❑ Does not obstruct existing surface flow to stream
- ❑ Proposed program elements:
 - Donor-funded play features
 - Shelter
 - Restrooms
 - APT Extension to Hawthorne Parkway



Proposed Arbor Play Space

DRAFT

1" = 40'

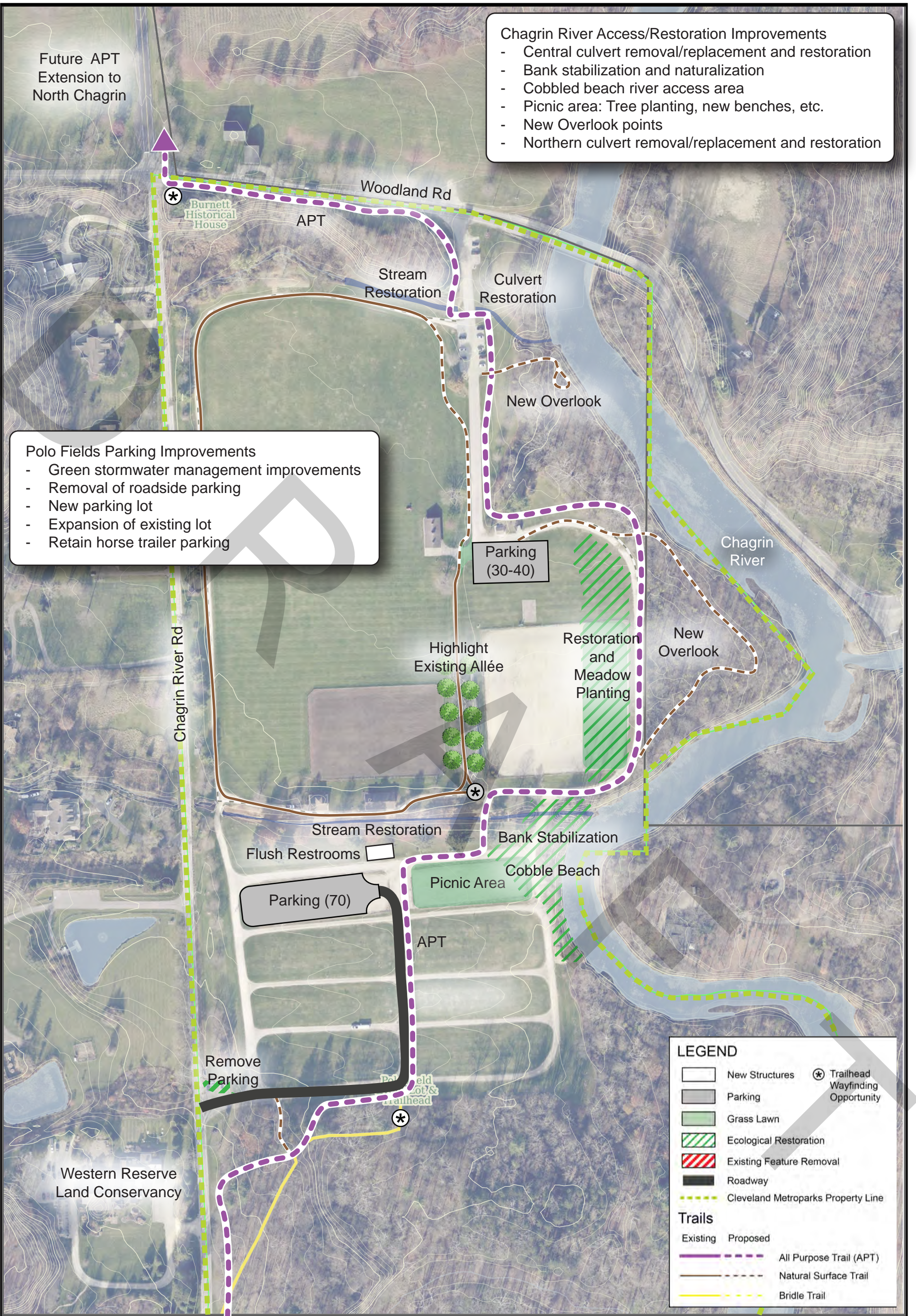


Miles Road at Sulphur Springs Dr

DRAFT

South Chagrin Reservation - 1" = 100'





Chagrin River Access/Restoration Improvements

- Central culvert removal/replacement and restoration
- Bank stabilization and naturalization
- Cobbled beach river access area
- Picnic area: Tree planting, new benches, etc.
- New Overlook points
- Northern culvert removal/replacement and restoration

Polo Fields Parking Improvements

- Green stormwater management improvements
- Removal of roadside parking
- New parking lot
- Expansion of existing lot
- Retain horse trailer parking

LEGEND

	New Structures		Trailhead Wayfinding Opportunity
	Parking		
	Grass Lawn		
	Ecological Restoration		
	Existing Feature Removal		
	Roadway		
	Cleveland Metroparks Property Line		
Trails			
	Existing		Proposed
	All Purpose Trail (APT)		Natural Surface Trail
	Bridle Trail		

Polo Field

APT Extension along Chagrin River Rd

DRAFT

South Chagrin Reservation - 1" = 200'

