



Cleveland Metroparks®

FIND YOUR PATH

Cleveland Metroparks Board of Park Commissioners
Capital Projects on the Horizon

October 20, 2022



SECOND CENTURY OF STEWARDSHIP

OUR MISSION

Protecting nature, connecting communities
and inspiring conservation of our world.



CORE GOALS

CONSERVE

land, wildlife and water to protect the beauty, ecological function and resilience of our region and the world.

CONNECT

people to nature and each other to build community and inspire positive action.



WELCOME

all people to explore the parks and zoo and prioritize inclusion, diversity, equity and accessibility.



ENGAGE

and serve people with high quality facilities, compelling zoological experiences, volunteer and recreational opportunities and captivating programs and events.



SUSTAIN

and uplift our region, our parks, our people and our infrastructure for future generations.



INNOVATE

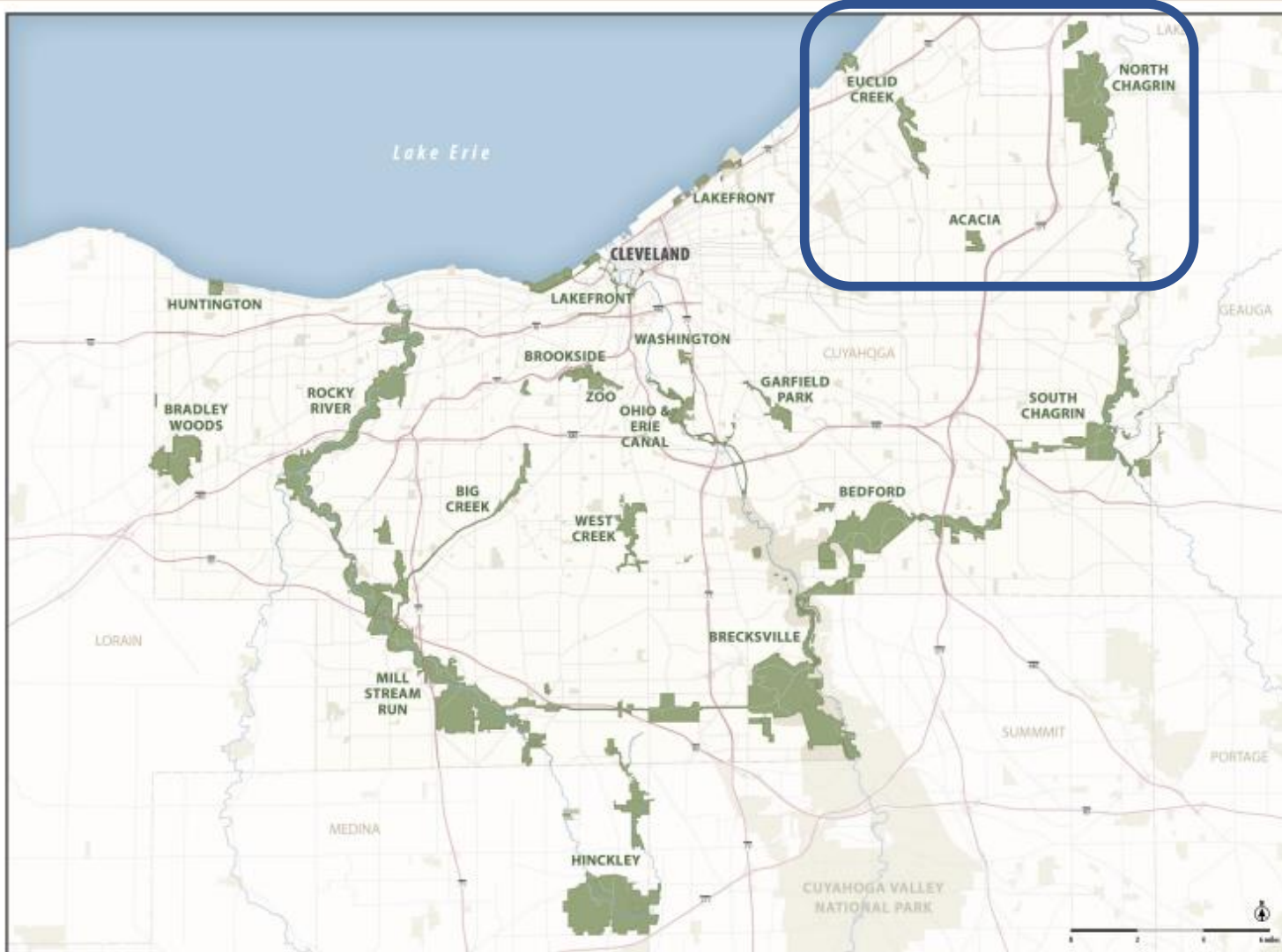
by exploring new solutions to expand the health and well-being of our region and the world.



Reservation Master Plan Update Cycle



Reservation Master Plan Update Cycle

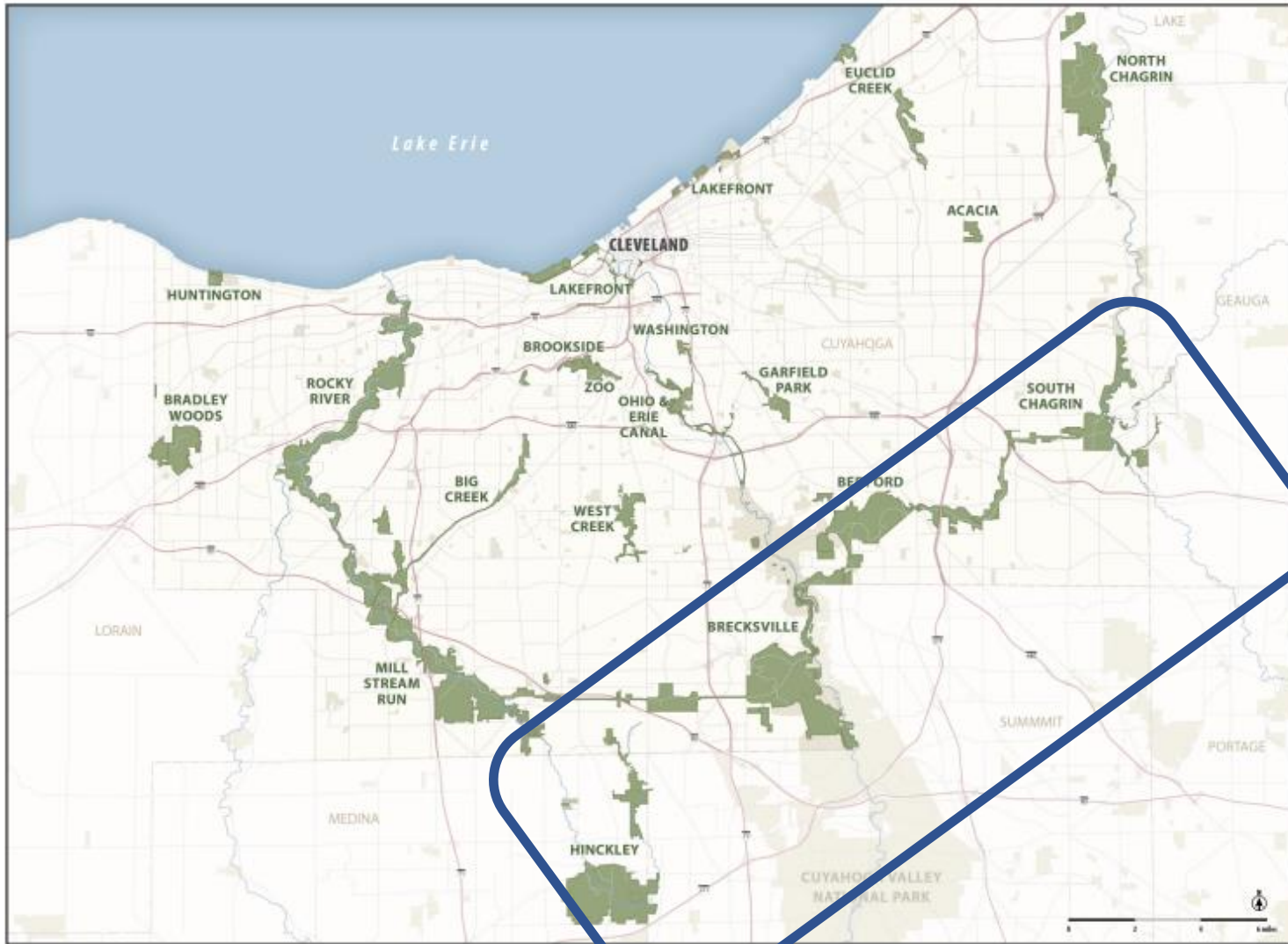


2023

- Euclid Creek
- North Chagrin
- Acacia
- New Acquisitions



Reservation Master Plan Update Cycle

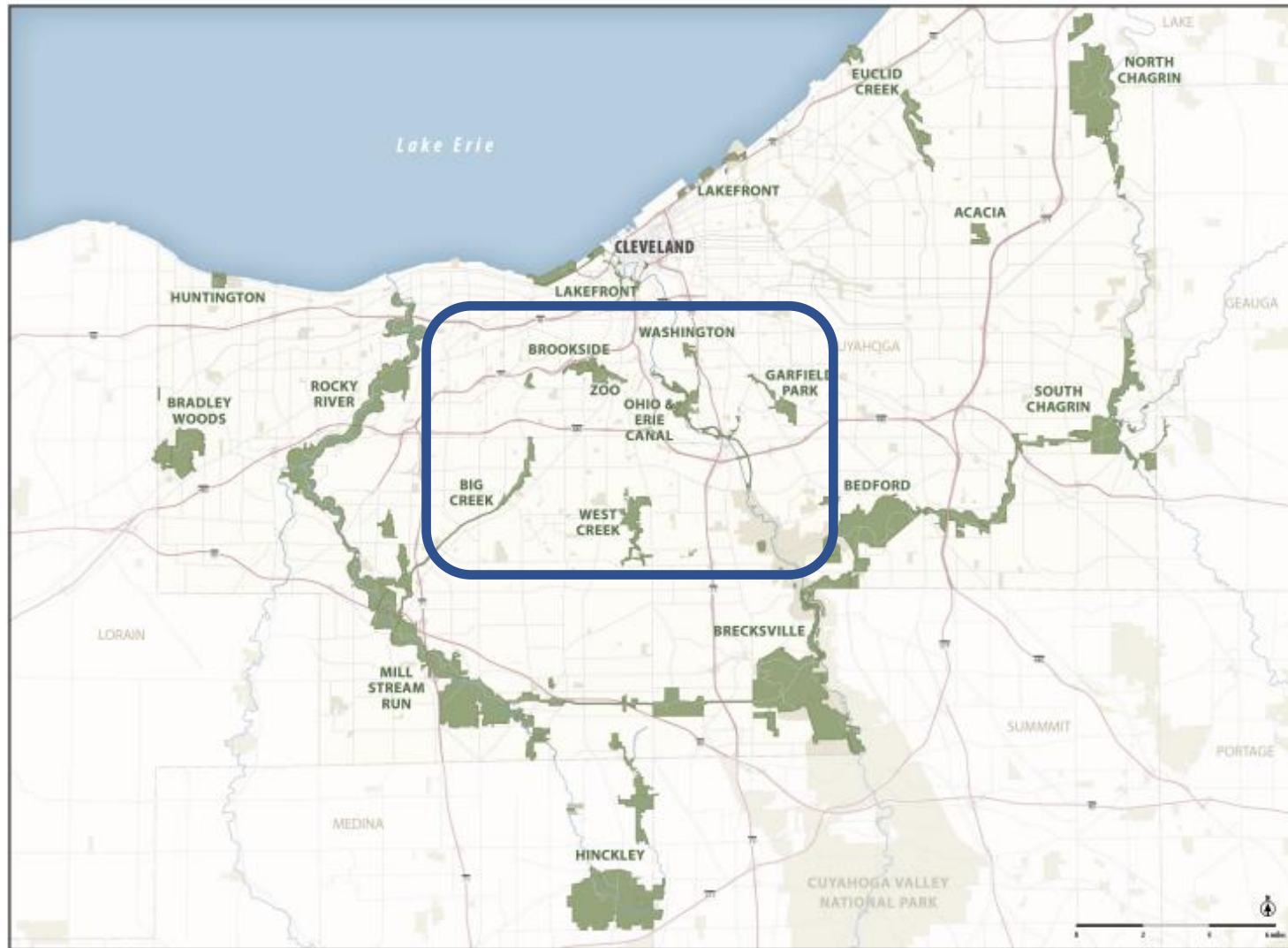


2024

- South Chagrin
- Bedford
- Brecksville
- Hinckley



Reservation Master Plan Update Cycle

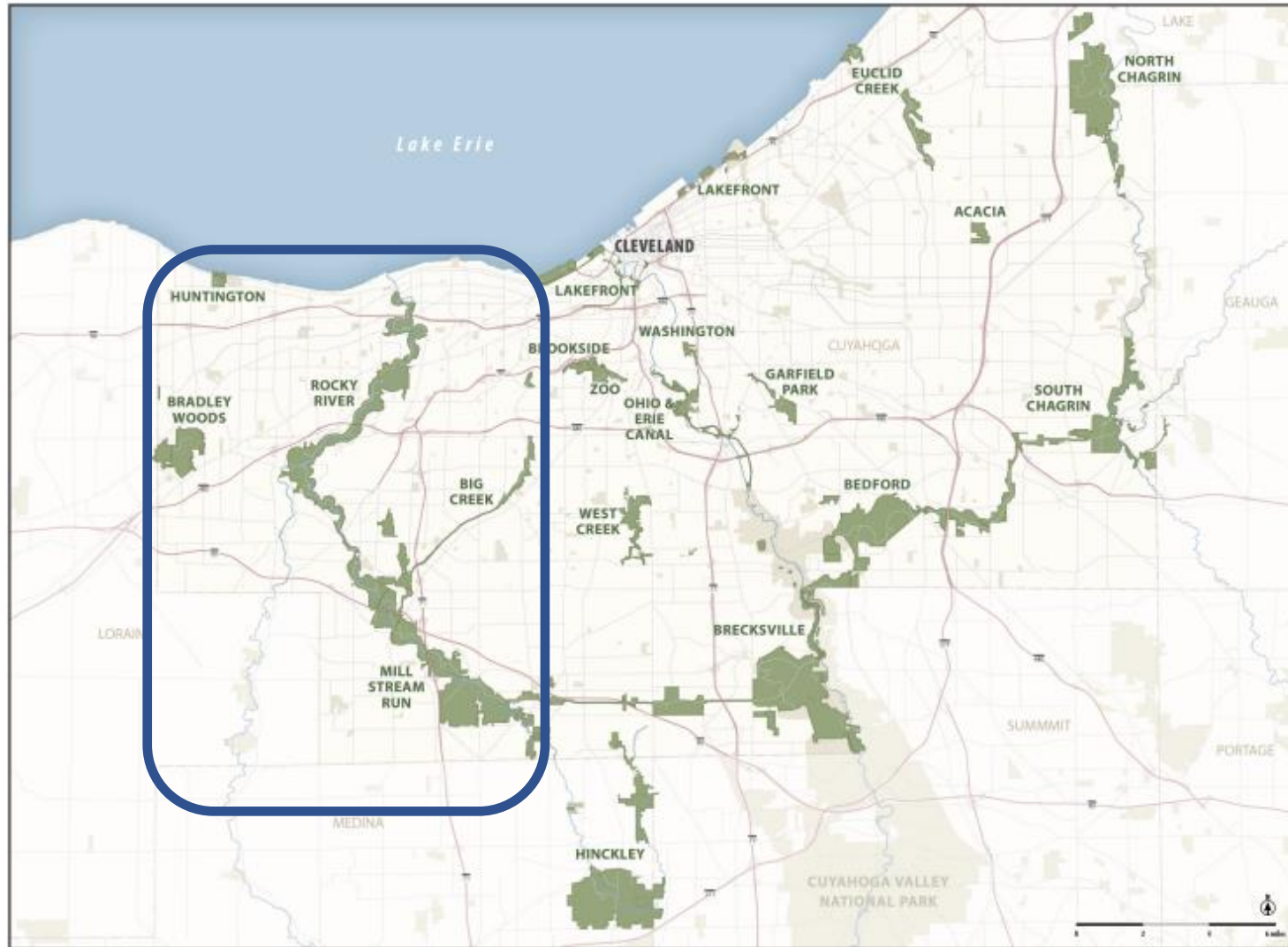


2025

- Garfield
- Ohio and Erie Canal
- Washington
- West Creek
- Big Creek
- Brookside



Reservation Master Plan Update Cycle



2026

- Mill Stream
- Rocky River
- Bradley Woods
- Huntington



Reservation Master Plan Update Cycle



2027

- Lakefront
- Rivergate



CHEERS Cleveland Harbor Eastern Embayment Resilience Strategy

PROJECT PARTNERS:

- Black Environmental Leaders Association
- City of Cleveland
- Cleveland Metroparks
- Ohio Department of Natural Resources
- Ohio Department of Transportation
- Port of Cleveland

Nearly \$6 M in grants and local match commitments are currently in hand for project design and permitting.



CHEERS Preliminary Phasing Plan



LAKE ERIE

PROPOSED EARLY IMPLEMENTATION PHASE

Approximately 4-6 acres
 Estimated Construction Cost: Approx. \$14.5M
 Project will replace failing breakwall to maintain protected marina infrastructure, alter breakwall to facilitate paddle access, expand nearshore habitat and provide an additional 4-6 acres of parkland

PHASE A2: EAST 55TH STREET AREA

Current Stage: Design and permitting
 Funding Source: National Fish and Wildlife Foundation
 Committed Funds: \$1.97M (bundled with Ph. B1)
 CY Dredge Material: 715,000 CY
 Estimated Construction Cost: \$75M

PHASE B: THE ISLE

Current Stage: Design and permitting
 Funding Source: Maritime Assistance Program
 Committed Funds: \$1.97M
 CY Dredge Material: 1,884,250 CY
 Estimated Construction Cost: \$145M

PHASE B1: OUTER BREAKWALL

Current Stage: Design and permitting
 Funding Source: National Fish and Wildlife Foundation
 Committed Funds: \$1.97M (bundled with Ph. A1)
 CY Dredge Material: Included in Phase B
 Estimated Construction Cost: Included in Phase B

PHASE A3: THE GORDON HILLS

Current Stage: Preliminary Concept
 Funding Source: To Be Determined
 Committed Funds: To Be Determined
 CY Dredge Material: 208,750 CY
 Estimated Construction Cost: \$40M

PHASE A1: THE HABITAT LOOP

Current Stage: Detailed concept drawings
 Funding Source: To Be Determined
 Committed Funds: To Be Determined
 CY Dredge Material: 366,240 CY
 Estimated Construction Cost: \$36M



EXISTING LAKEFRONT RESERVATION - CLEVELAND METROPARKS

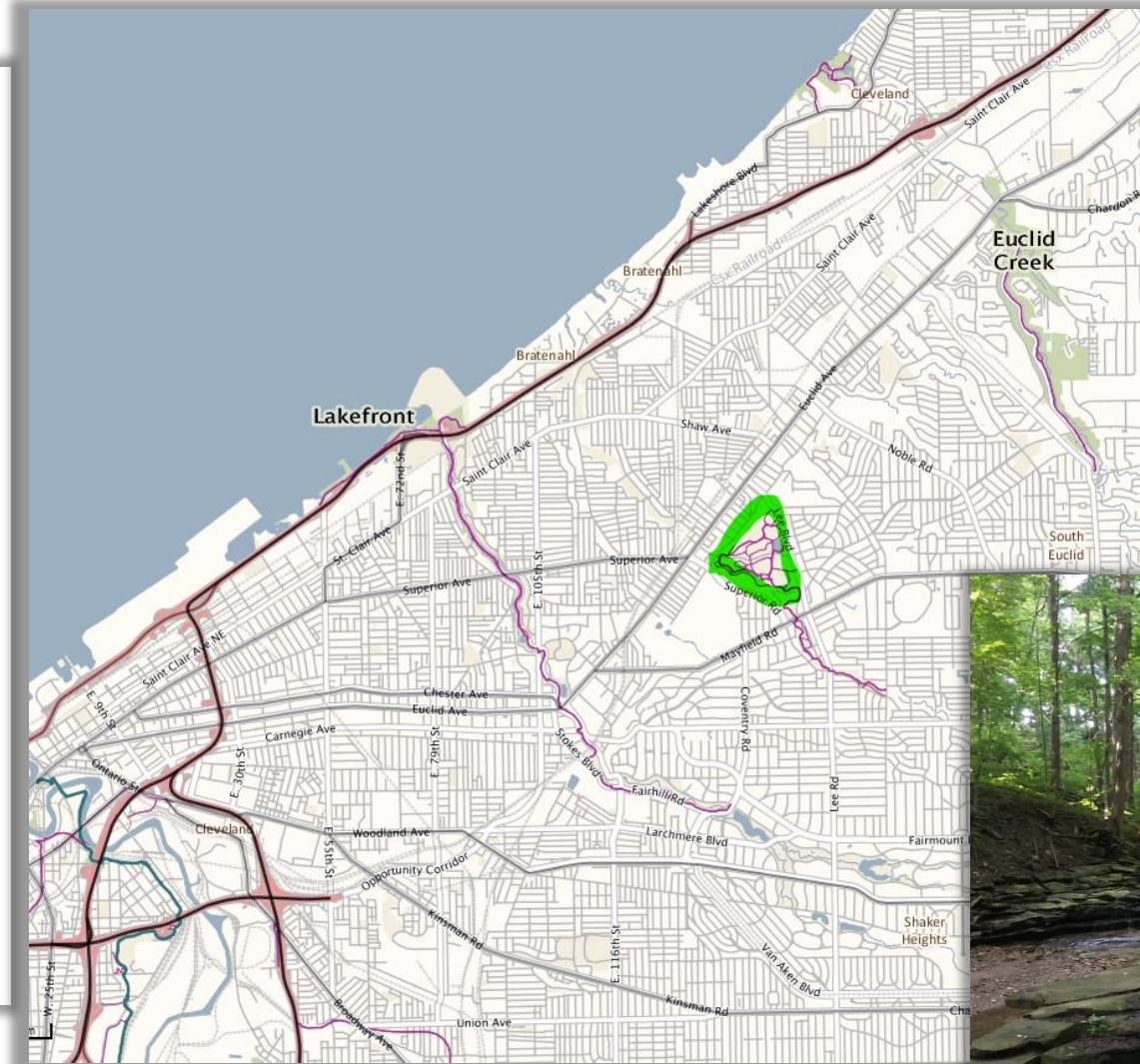
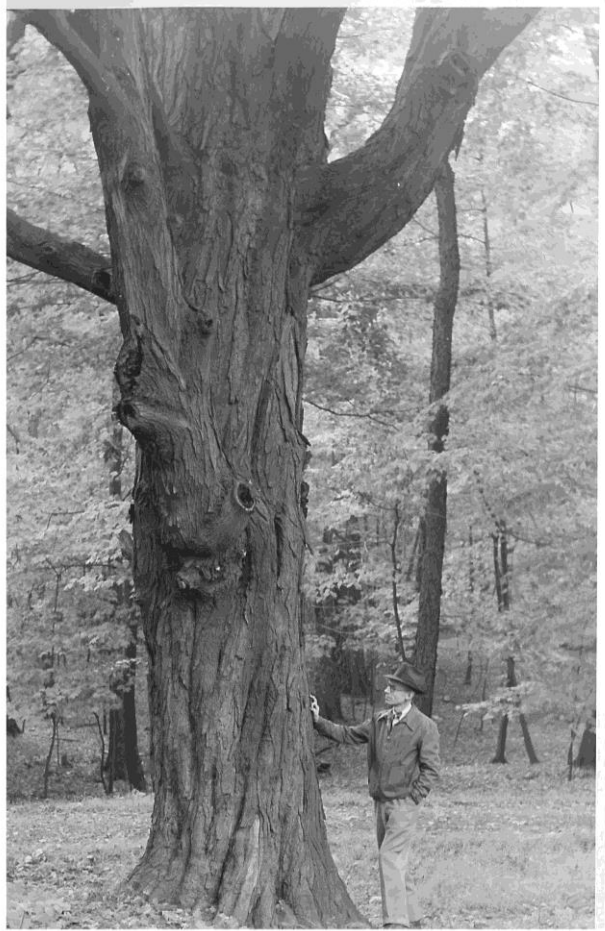
ORIGINAL GRAPHIC PROVIDED BY WRT



CLEVELAND HARBOR EASTERN EMBAYMENT RESILIENCE STRATEGY
 CHEERS NOAA EARLY IMPLEMENTATION GRANT



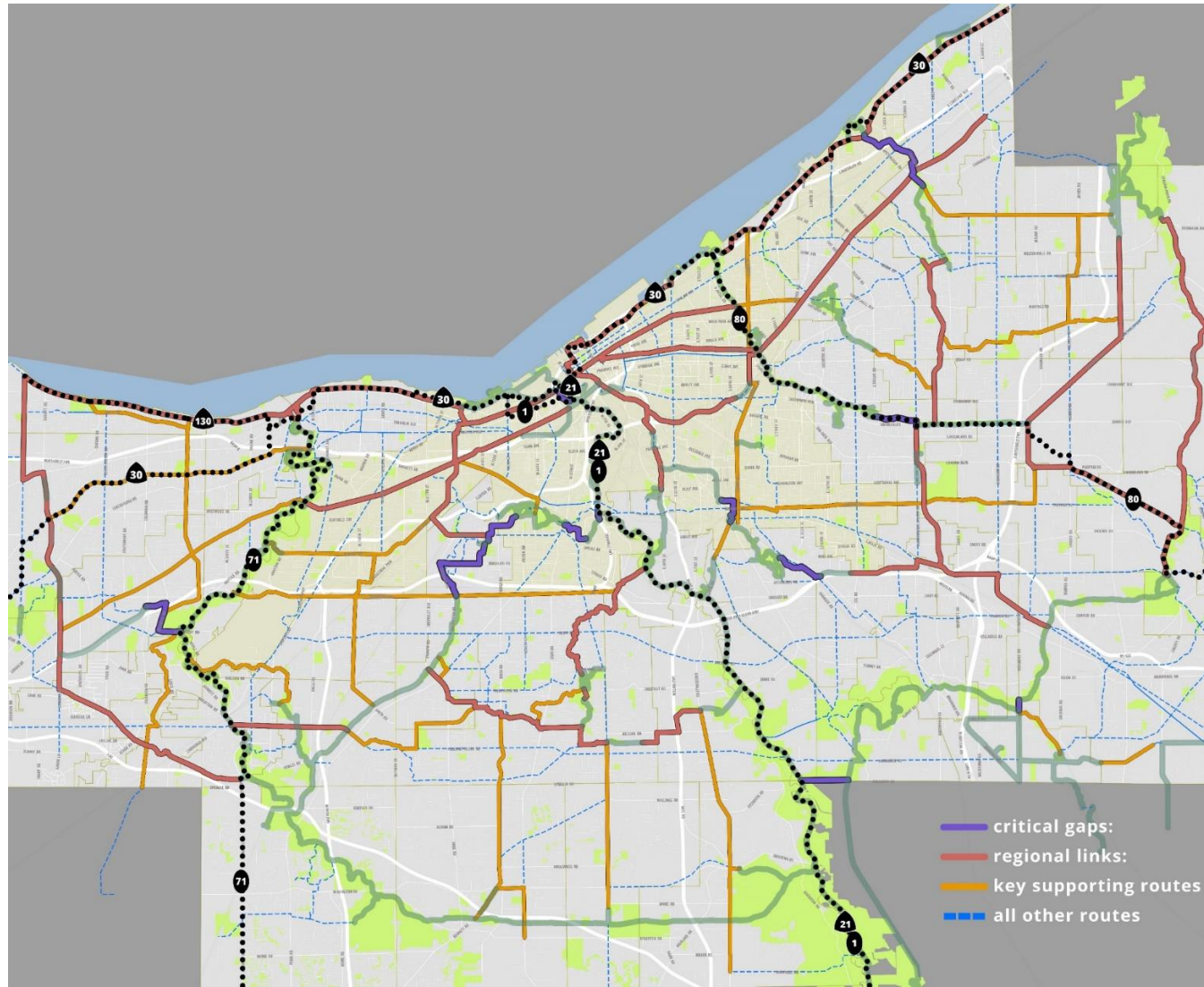
Forest Hill Park



Euclid Beach Park



Cuyahoga Greenways Plan – Cuyahoga Greenways Partners

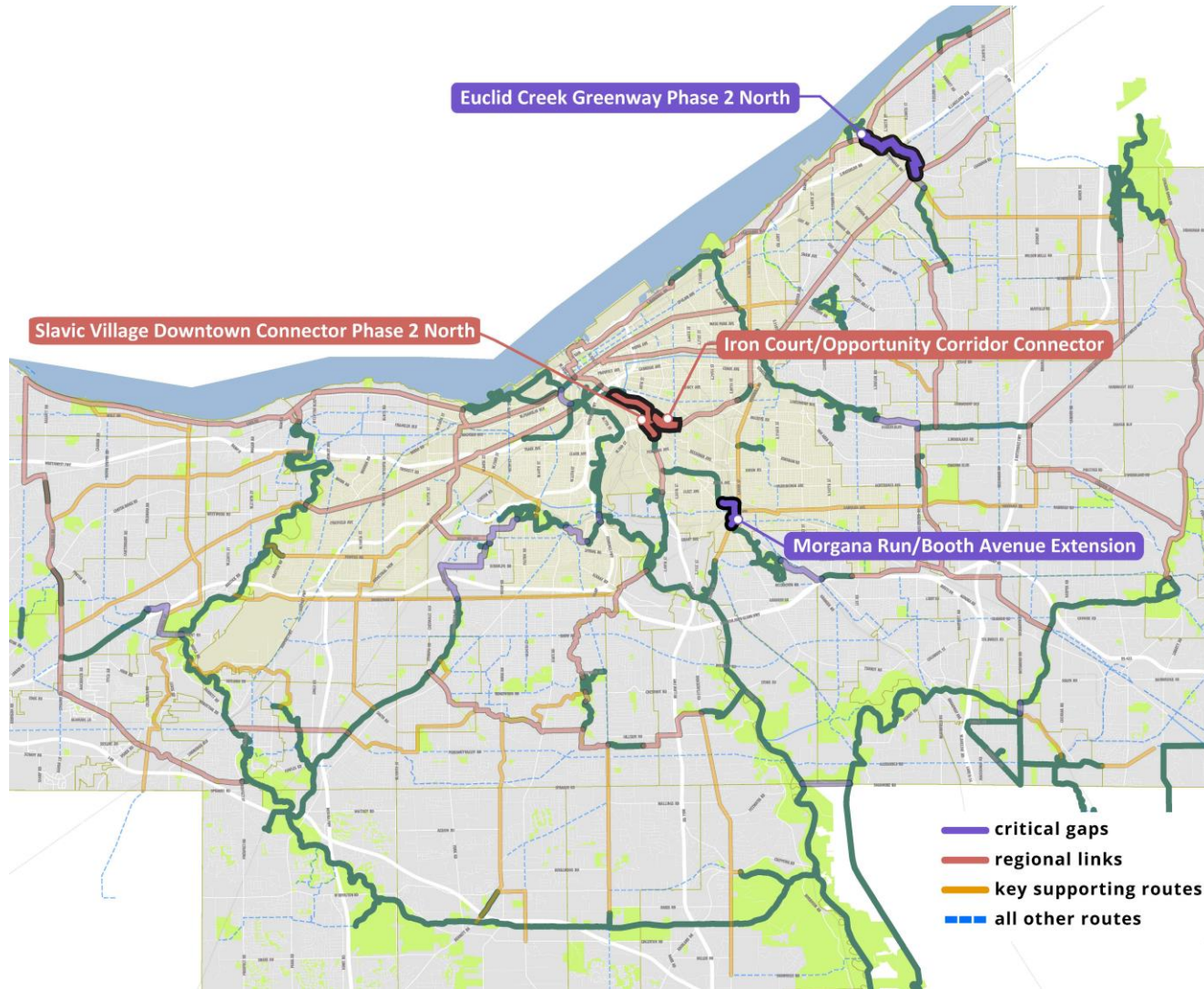


- **Critical Gaps**
 - 12 Projects (14 mi.)
- **Regional Links**
 - 27 Projects (132 mi.)
- **Key Routes**
 - 30 Projects (111 mi.)
- **Supporting Routes**
 - > 350 mi.



CUYAHOGA
greenways

RAISE – Rebuilding American Infrastructure with Sustainability and Equity



- **Slavic Village Downtown Connector (Ph. 2N) (RL-13)**
- **Iron Court/Opportunity Corridor Connector (RL-14)**
- **Morgana Run Booth Extension (CG-7)**
- **Euclid Creek Greenway (Ph. 2N (3 +4)) (CG-11)**

Euclid Creek Greenway



Euclid Creek Greenway - Phase 1 & 2
CLEVELAND METROPARKS

FEB 2021



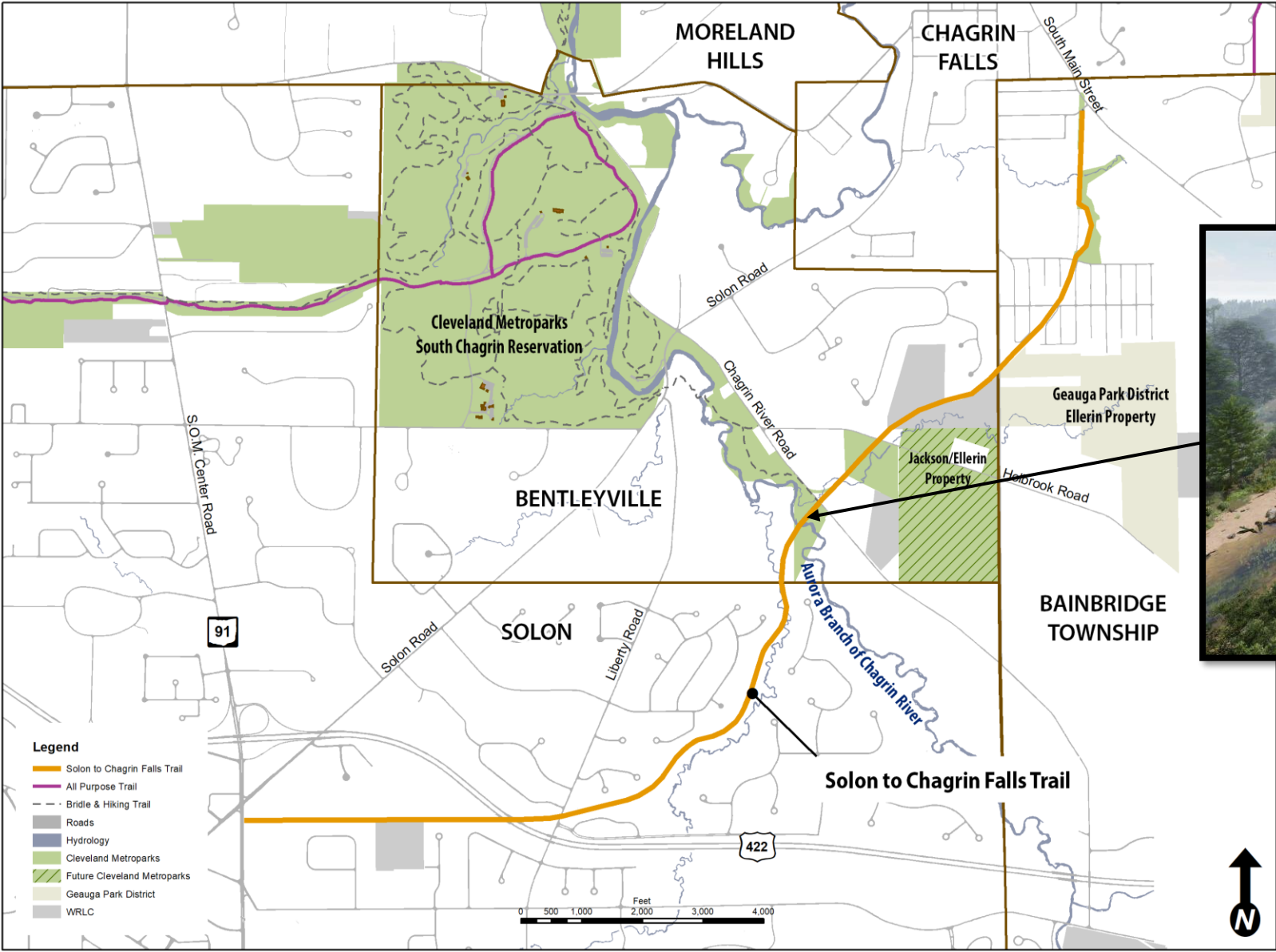
RAISE GRANT - EUCLID CREEK GREENWAY PHASE 2 NORTH

Cleveland Metroparks

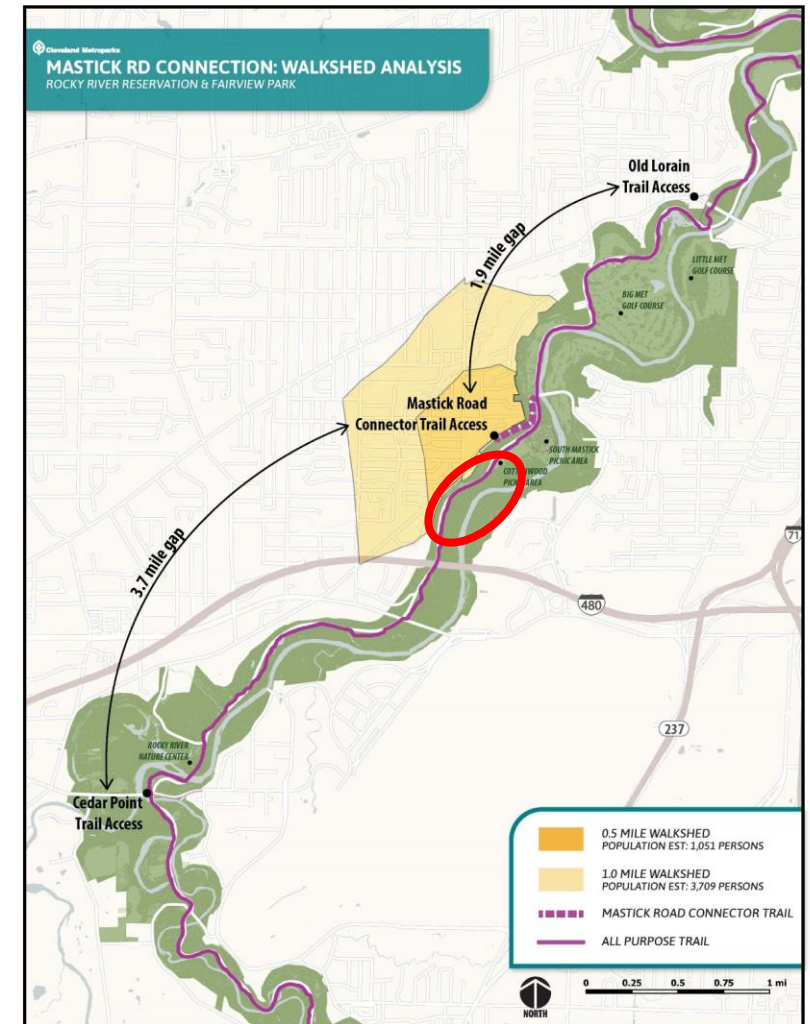
AUGUST 2022



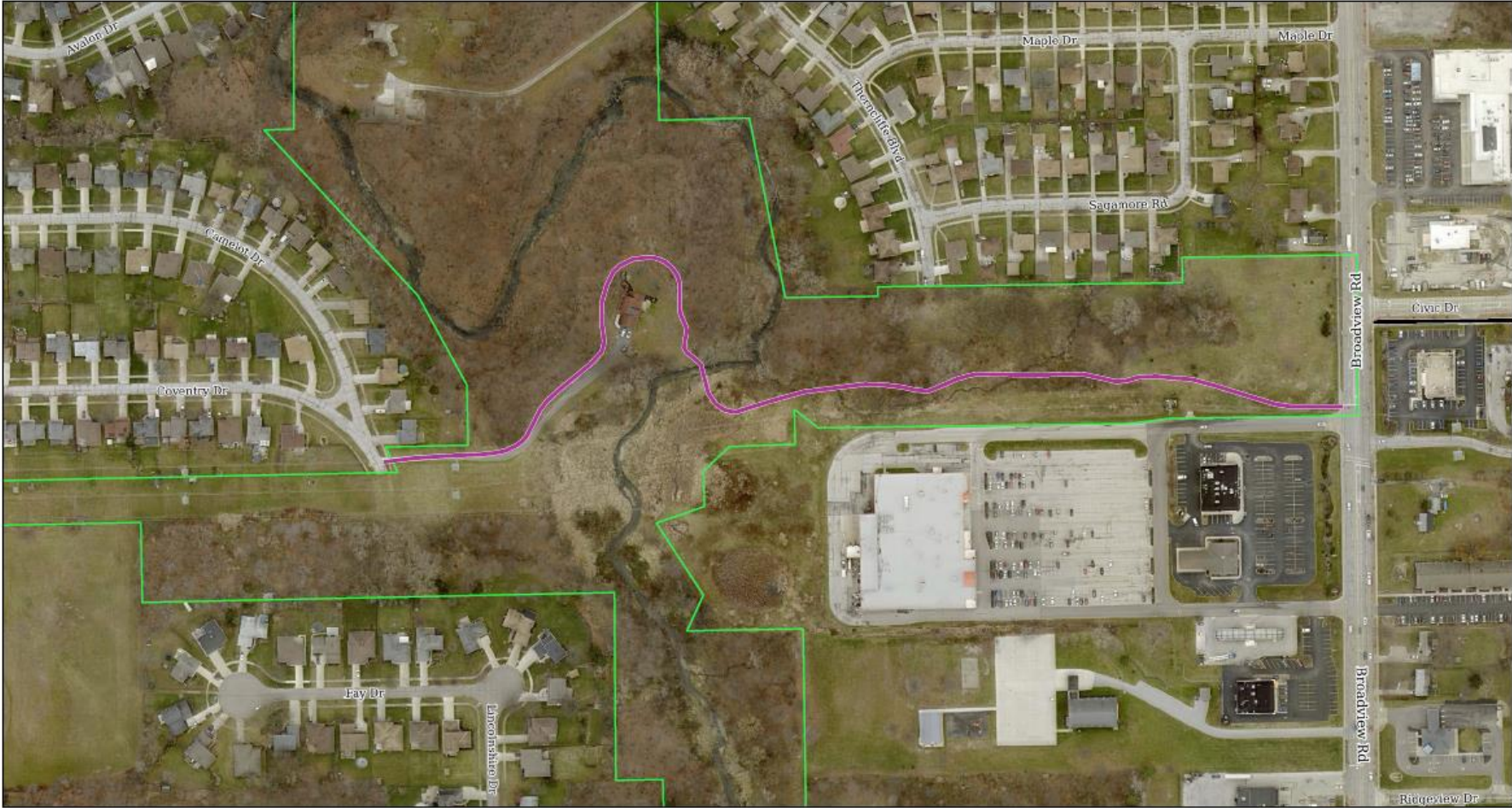
Solon to Chagrin Falls Connector Trail



Fairview Park – Mastick Road Connector Trail



West Creek Greenway



West Creek Greenway Broadview Connector

West Creek Reservation
44176000

0 250 500 ft



Old Lorain Connector



Project Partners:

- Cleveland Metroparks
- City of Cleveland and Ward 17 Councilperson Charles Slife
- West Park Kamm's Neighborhood Development (WPKND)
- Cuyahoga County Council

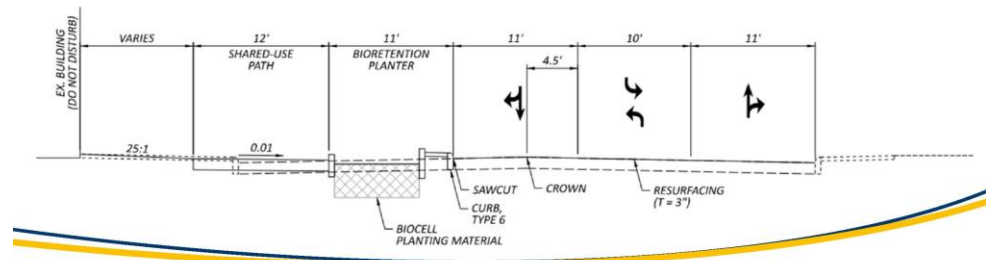
The partners are working together to improve off-road connections to Rocky River Reservation for walkers, runners, bicyclists, individuals with mobility challenges, and families with strollers. Current access to the park near Old Lorain Road is difficult due to the steep slopes and narrow roadway. A study funded by the City of Cleveland and managed by Cleveland Metroparks prepared preliminary engineering plans for a proposed APT. The partners are seeking funding for implementation.

Garfield Heights - Garfield Boulevard

Garfield Boulevard Trail & Green Infrastructure



E. 85TH STREET TO E. 90TH STREET



Garfield Pond, Trails, Bridges, and Program Center



Garfield Pond, Trails, Bridges, and Program Center



Garfield Pond, Trails, Bridges, and Program Center



PENINSULA
ARCHITECTS

Wallace Lake – Mill Stream Run Reservation



Wallace Lake – Mill Stream Run Reservation

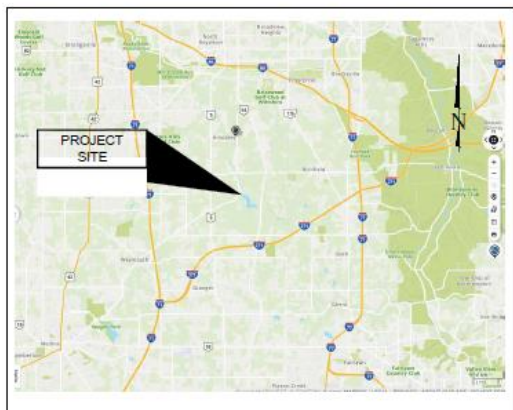


Hinckley Dam

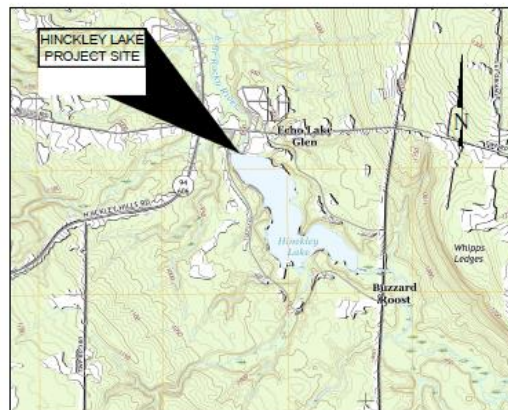


HINCKLEY RESERVATION HINCKLEY LAKE DAM MODIFICATIONS

MEDINA COUNTY, OHIO



VICINITY MAP
SCALE: 1"=2 MILE



LOCATION MAP
SCALE: 1"=1/4 MILE

| |
|-----------------------------------------------------------------------------|
| APPROVED |
| Sean E. McDermott, P.E., CHRF, Planning and Design Officer _____ DATE |
| REVIEWED BY |
| David L. Frey, P.E., PROJECT MANAGER _____ DATE |



SEAN THOMAS AFB
REGISTERED ENGINEER NO. E-75731

DATE



JOSEPH LEE FLORIOFF
REGISTERED ENGINEER NO. E-84193

DATE

INDEX OF SHEETS

| | | | | | |
|-------------------------------------|----|----------------------------------|----|------------------------------------------|---------|
| TITLE SHEET | 1 | WALL SECTIONS AND DETAILS - 1 | 13 | COLLECTOR DRAIN PROFILE | 25 |
| GENERAL NOTES | 2 | WALL SECTIONS AND DETAILS - 2 | 14 | MISCELLANEOUS DETAILS - 1 | 26 |
| OVERVIEW PLAN | 3 | WALL SECTIONS AND DETAILS - 3 | 15 | MISCELLANEOUS DETAILS - 2 | 27 |
| EXISTING CONDITIONS PLAN | 4 | CONTROL TOWER AND LAKE DRAIN - 1 | 16 | MISCELLANEOUS DETAILS - 3 | 28 |
| DEMOLITION PLAN | 5 | CONTROL TOWER AND LAKE DRAIN - 2 | 17 | CONCEPTUAL DREDGING PLAN | 29 |
| PROPOSED SITE PLAN | 6 | CONTROL TOWER AND LAKE DRAIN - 3 | 18 | EROSION AND SEDIMENT CONTROL PLAN - 1 | 30 |
| SPILLWAY PLAN | 7 | EMBANKMENT SECTIONS - 1 | 19 | EROSION AND SEDIMENT CONTROL PLAN - 2 | 31 |
| SPILLWAY AND STILLING BASIN PROFILE | 8 | EMBANKMENT SECTIONS - 2 | 20 | EROSION AND SEDIMENT CONTROL NOTES | 32 |
| SPILLWAY AND STILLING BASIN DETAILS | 9 | EMBANKMENT SECTIONS - 3 | 21 | EROSION AND SEDIMENT CONTROL DETAILS - 1 | 33 |
| SPILLWAY SECTIONS - 1 | 10 | EMBANKMENT SECTIONS - 4 | 22 | EROSION AND SEDIMENT CONTROL DETAILS - 2 | 34 |
| SPILLWAY SECTIONS - 2 | 11 | EMBANKMENT SECTIONS - 5 | 23 | EROSION AND SEDIMENT CONTROL DETAILS - 3 | 35 |
| WALL ELEVATIONS | 12 | EMBANKMENT SECTIONS - 6 | 24 | BORING LOGS - 1 - 5 | 36 - 40 |

75% DESIGN DRAWINGS NOT FOR CONSTRUCTION

Michael Baker International, Inc.
111 Superior Avenue
Suite 2300
Cleveland, OH 44114

Cleveland Metroparks
4101 Fulton Parkway
Cleveland, OH 44144

TITLE SHEET

DESIGNED BY: JAK
DRAWN BY: JEC
CHECKED BY: SJA
APPROVED BY: BTA

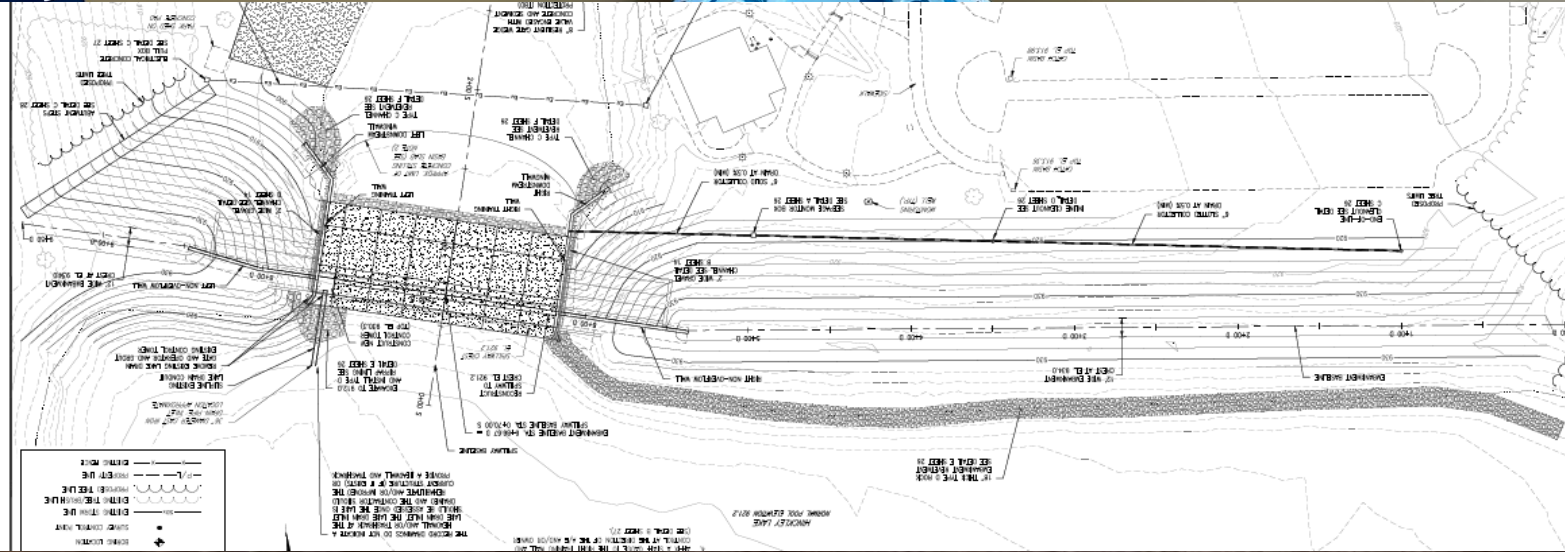
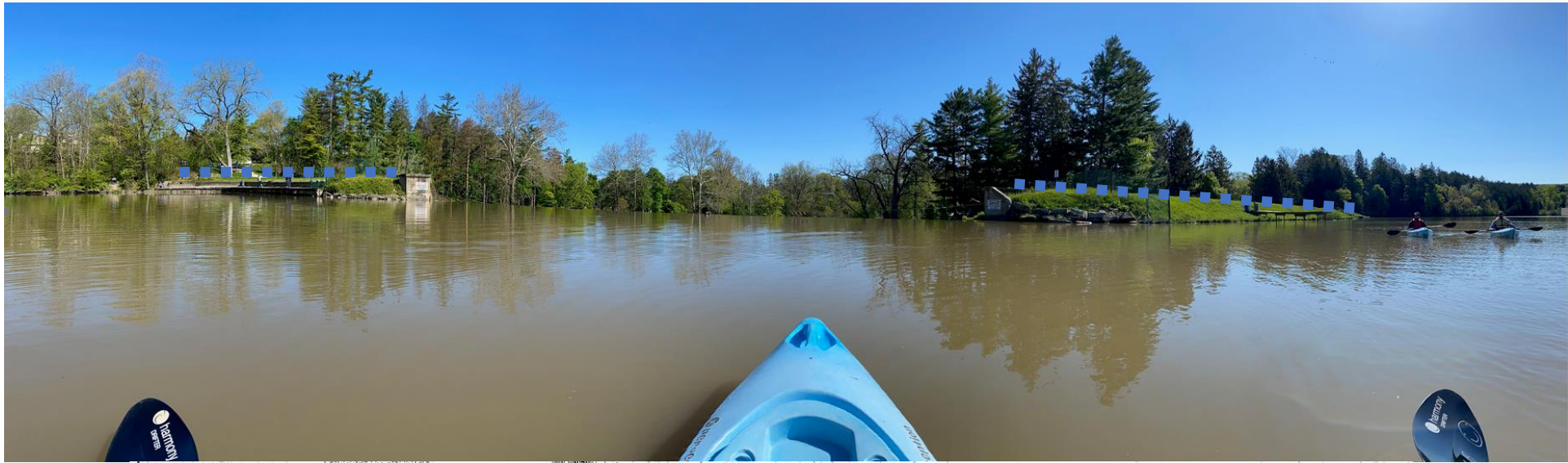
JOB NUMBER: 142
SCALE: NTS
DATE: 01/20/21
REVISED:

**HINCKLEY RESERVATION
HINCKLEY LAKE DAM MODIFICATIONS
MEDINA COUNTY**

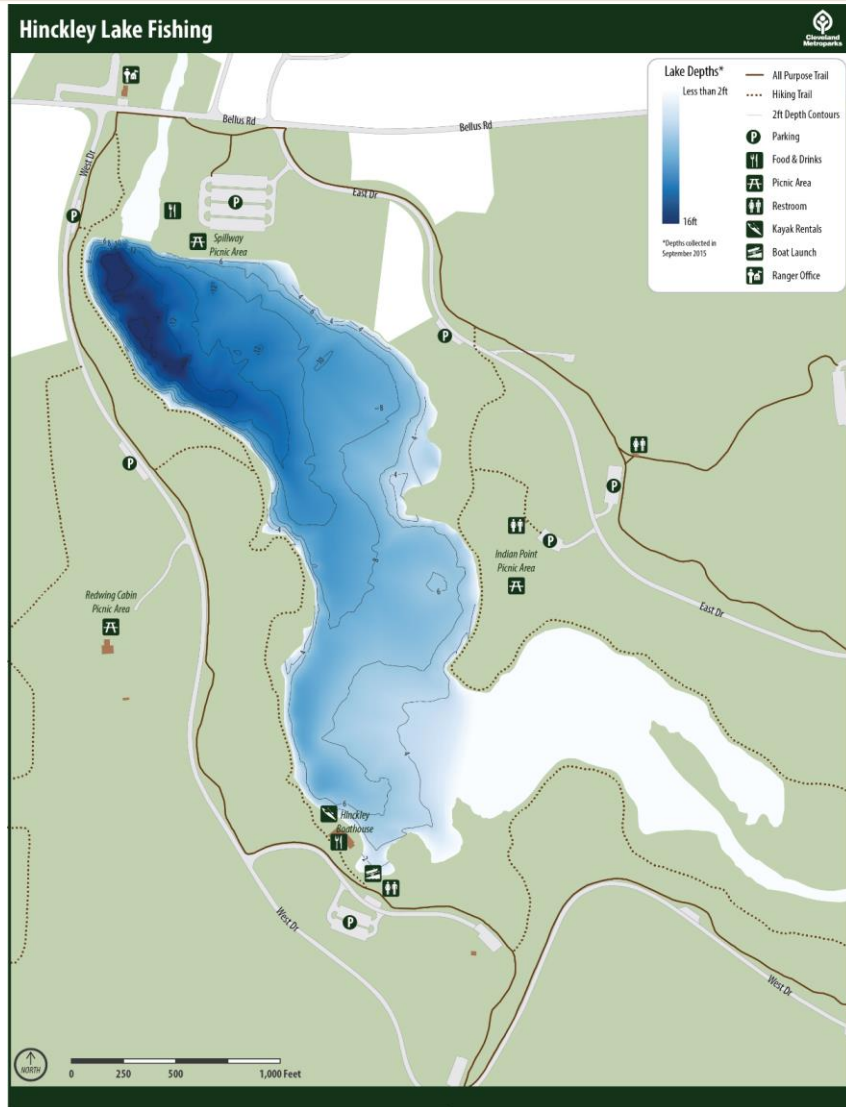
C1



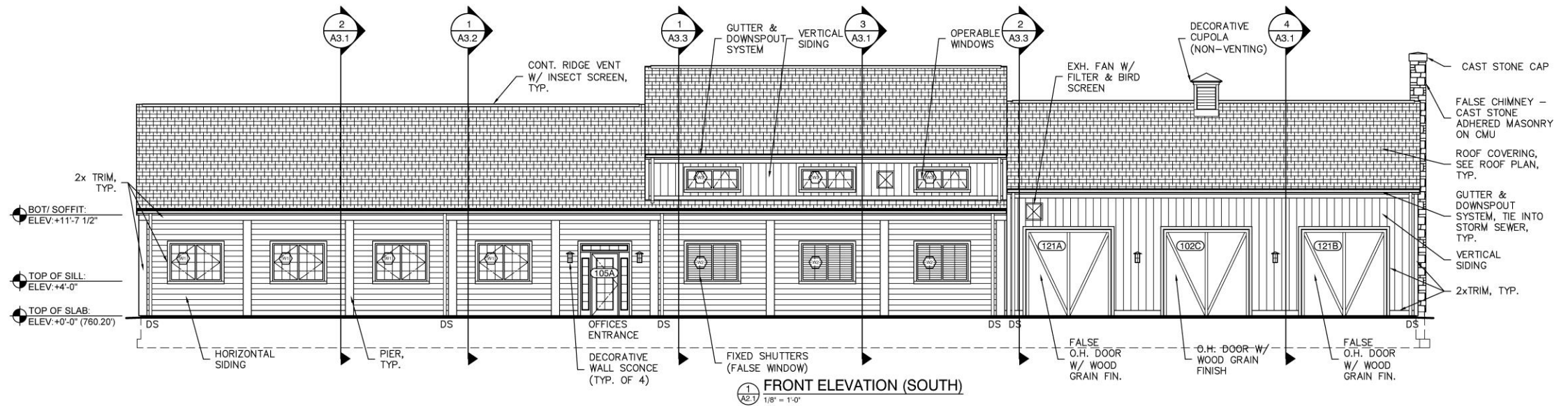
Hinckley Dam



Hinckley Dam



Manakiki Golf Course



Management Centers



Not To Scale

October 2021

Preliminary South Chagrin Management Center
South Chagrin Reservation



Natural Surface Trails

- My Mountain Trail
- Byers Pond loop
- West Creek Parmadale Mountainbike Trail Extension
- Wordens and Whipps Ledges Rehabilitation
- Henry Church Rock Trail Restoration-Phase 2
- Forest Loop Rehabilitation
- Euclid Creek Eastern Ledge Trail-Phase 2
- Fort Hill Trail Network-Phase 2
- Wargo Farm Trail



BEDFORD RESERVATION: WARGO FARM TRAIL PROJECT IN GARFIELD HEIGHTS

CLEVELAND METROPARKS

OCT 2022



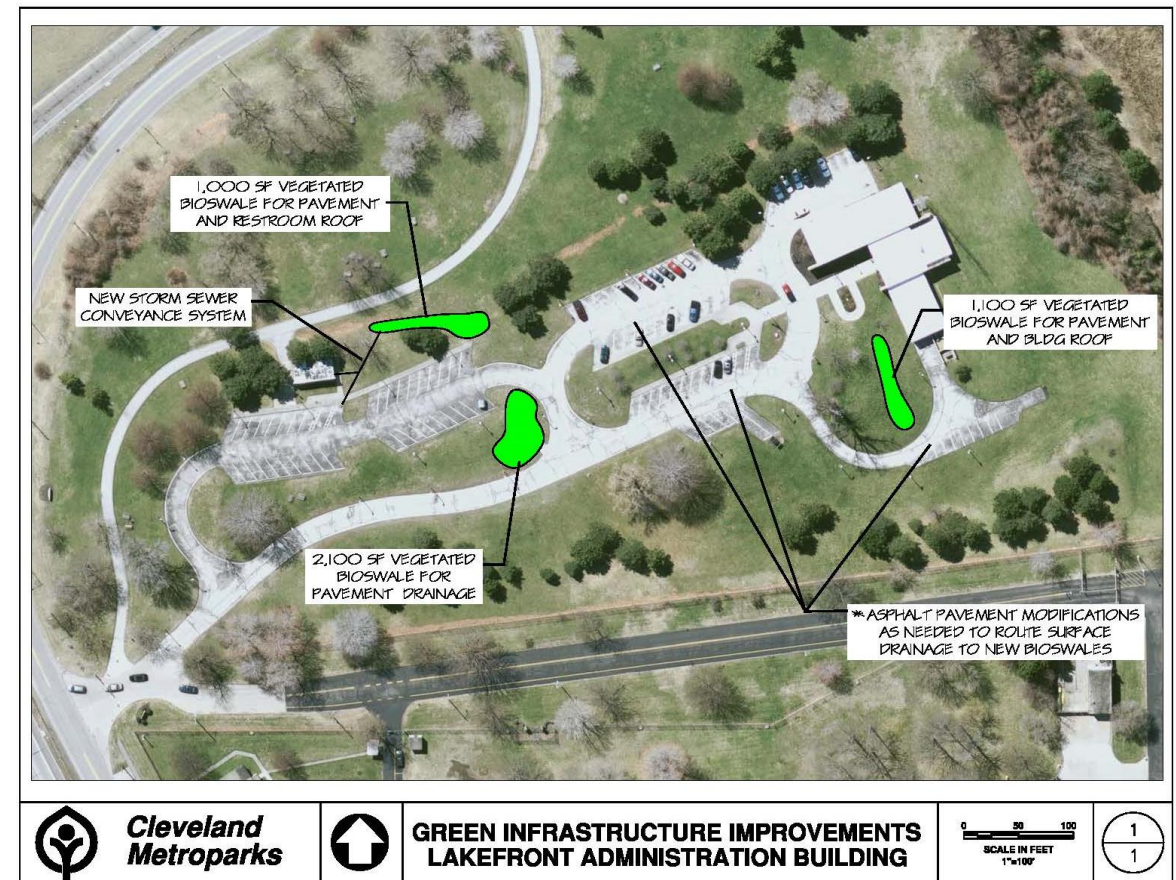
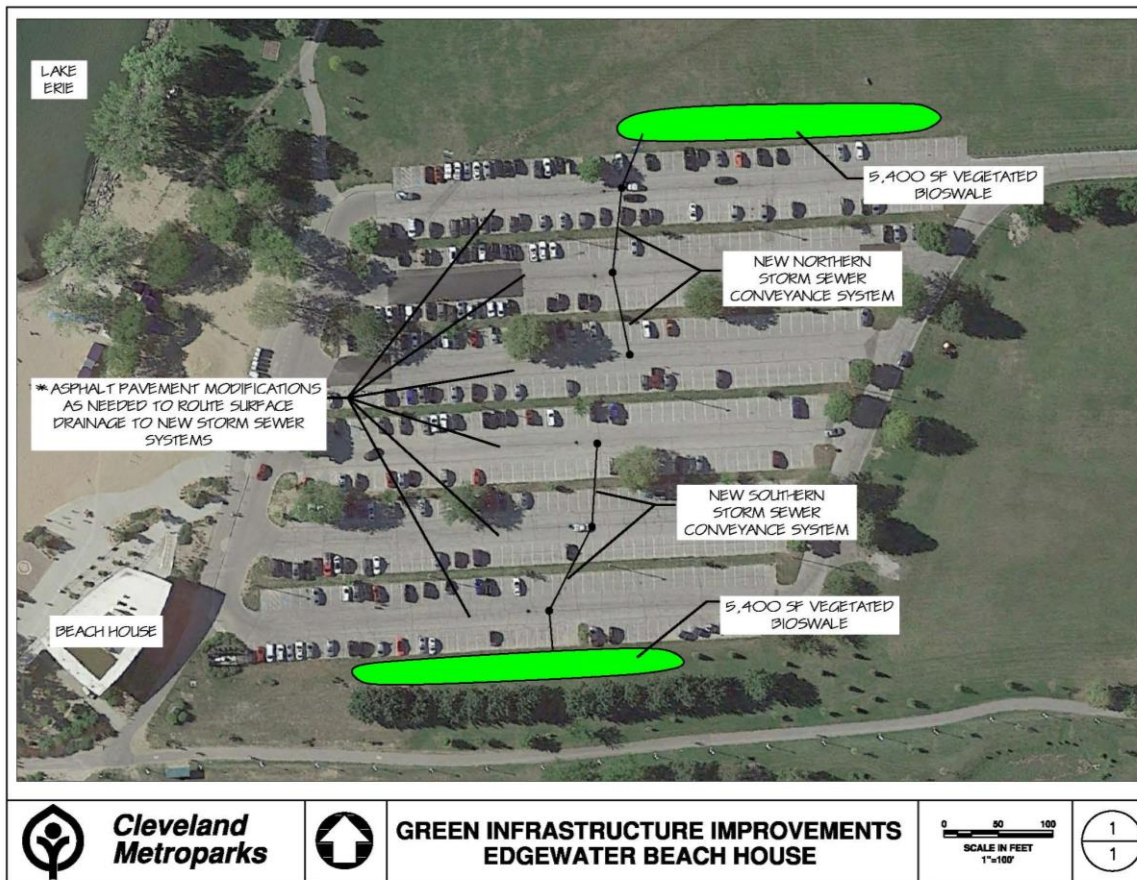
Stormwater Retrofits

Edgewater Park

Lakefront Administration

Euclid Beach

Dunham Park



Zoo 150



Tropical Bears



Primate Forest



Zoo Front Entrance



Grey Kangaroo Barn



Zoo Concession Improvements





Cleveland Metroparks®

FIND YOUR PATH

Cleveland Metroparks Board of Park Commissioners
Capital Projects on the Horizon

October 20, 2022