



# Deer Movement and Fawn Survival Study Update

12 September 2014





## COYOTE HABITAT AREA

Eastern coyotes inhabit this area. They are normally passive.

Coyotes form small family groups and may act alone or in a group to defend their territory. This behavior is normal but may be more intense from January through June due to mating, denning and pup weaning in this area.



Dogs may trigger coyotes to display forms of aggression consisting of yips, howls and growls. Coyotes may follow behind dog-walkers for a short distance. If you encounter a coyote, calmly control your pet and leave the area the way you entered. If you are walking a dog, shorten the leash; keep the dog close and as quiet as possible. Pick up and carry small dogs.

**If a coyote does approach**, DO NOT turn and run or walk away with your back to the animal. This may trigger a predatory or aggressive response.

Walk slowly backward so that you do not turn your back on the coyote.

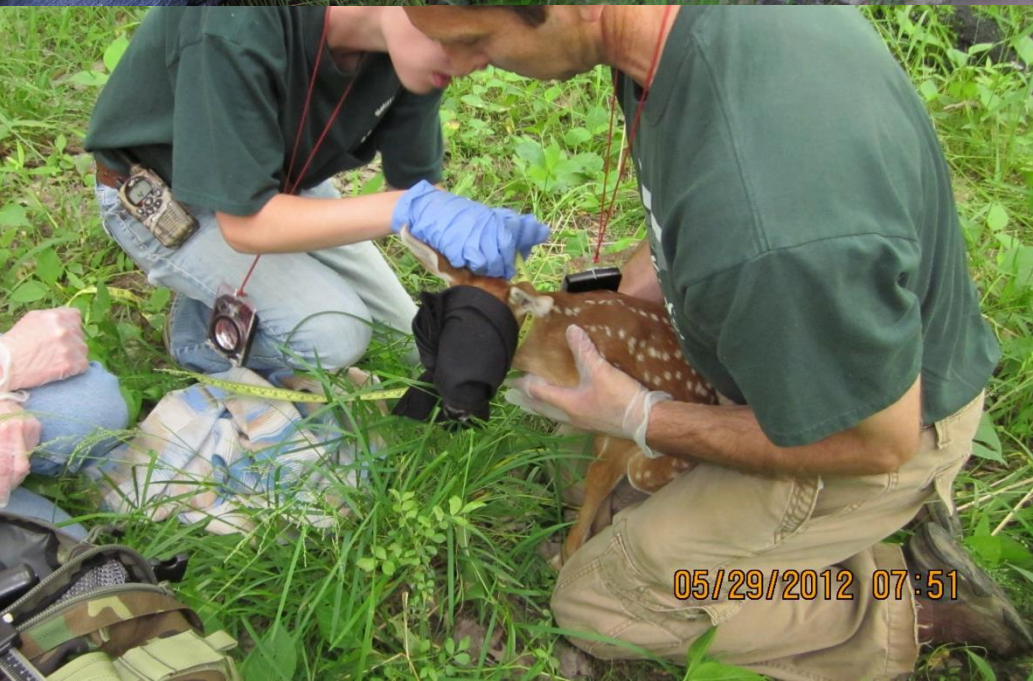
Try to frighten it away by shouting in a deep voice, waving your arms, throwing objects and looking the coyote directly in the eyes.

If you are wearing a coat or vest, spread it open like a cape so that you appear larger.

Carrying a whistle with you can aid in frightening a coyote and alerting others.

Please report coyote interaction to  
Cleveland Metroparks Rangers at 440-333-4911





## Tracking scheme

- 3-4 locations/day during peak fawn vulnerability
- One location daily during moderate fawn vulnerability
- Located every 3-4 days during low vulnerability
- All mortality signals investigated





## Doe capture

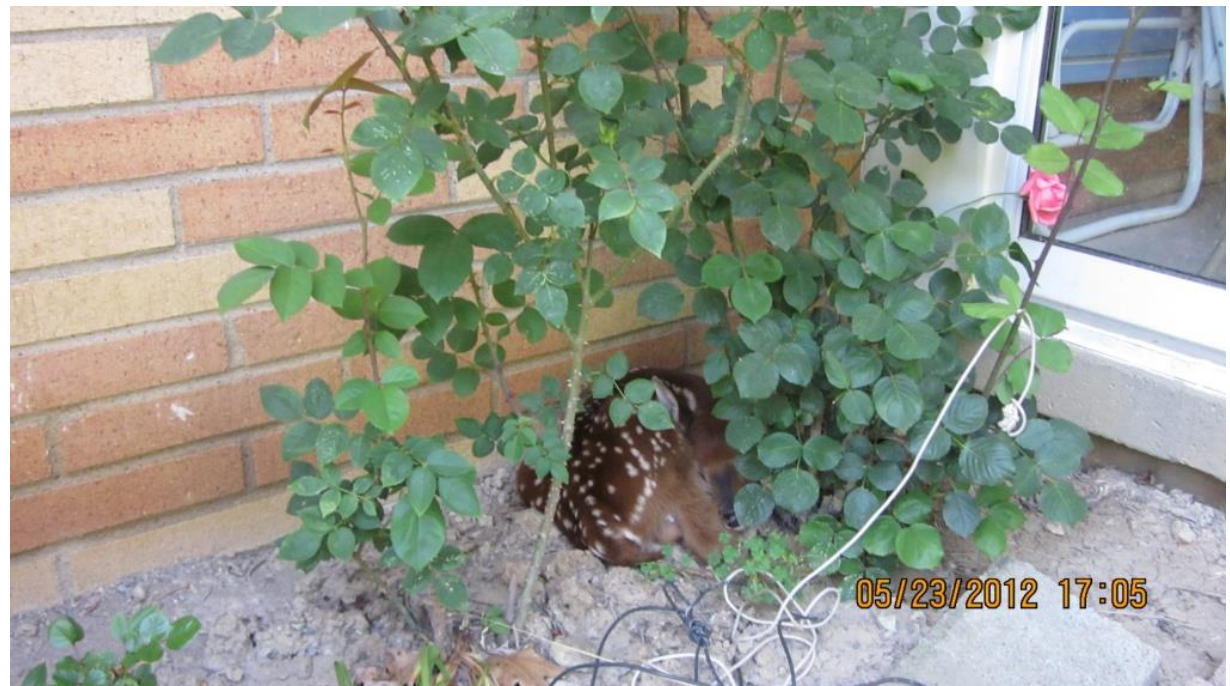
- 2012: 21 deer captured
  - 4 mature does
- 2013: capture failure
- 2014: 11 deer captured
  - 4 mature does





## Fawn capture

- 57 fawns collared
- 8 associated with collared does
- 14 from systematic searches
- 35 called in



# Coyote capture

- 2013: 2 coyotes collared
- 2014: 4 coyotes collared



# 13 Fawn Mortalities in 3 Years

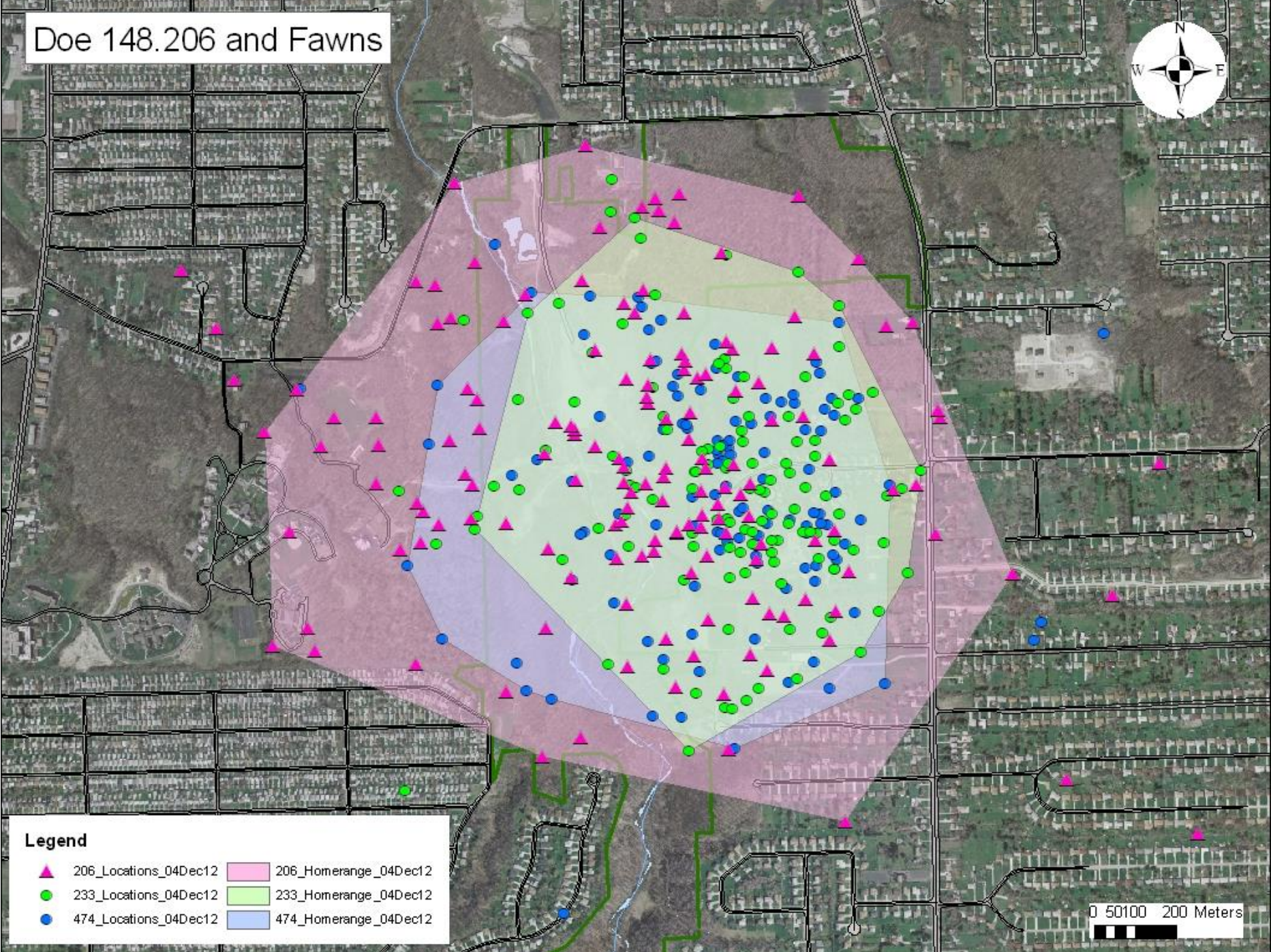
- 3 Deer-Vehicle Collisions
- 3 Predations
- 5 Starvations
- 1 Removed for management
- 1 Poached
- **23% mortality of collared fawns**





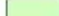



## Other Outcomes

- 21 Live
- 18 Shed collars
- 3 Dispersed
- 2 Collars found, outcome unknown

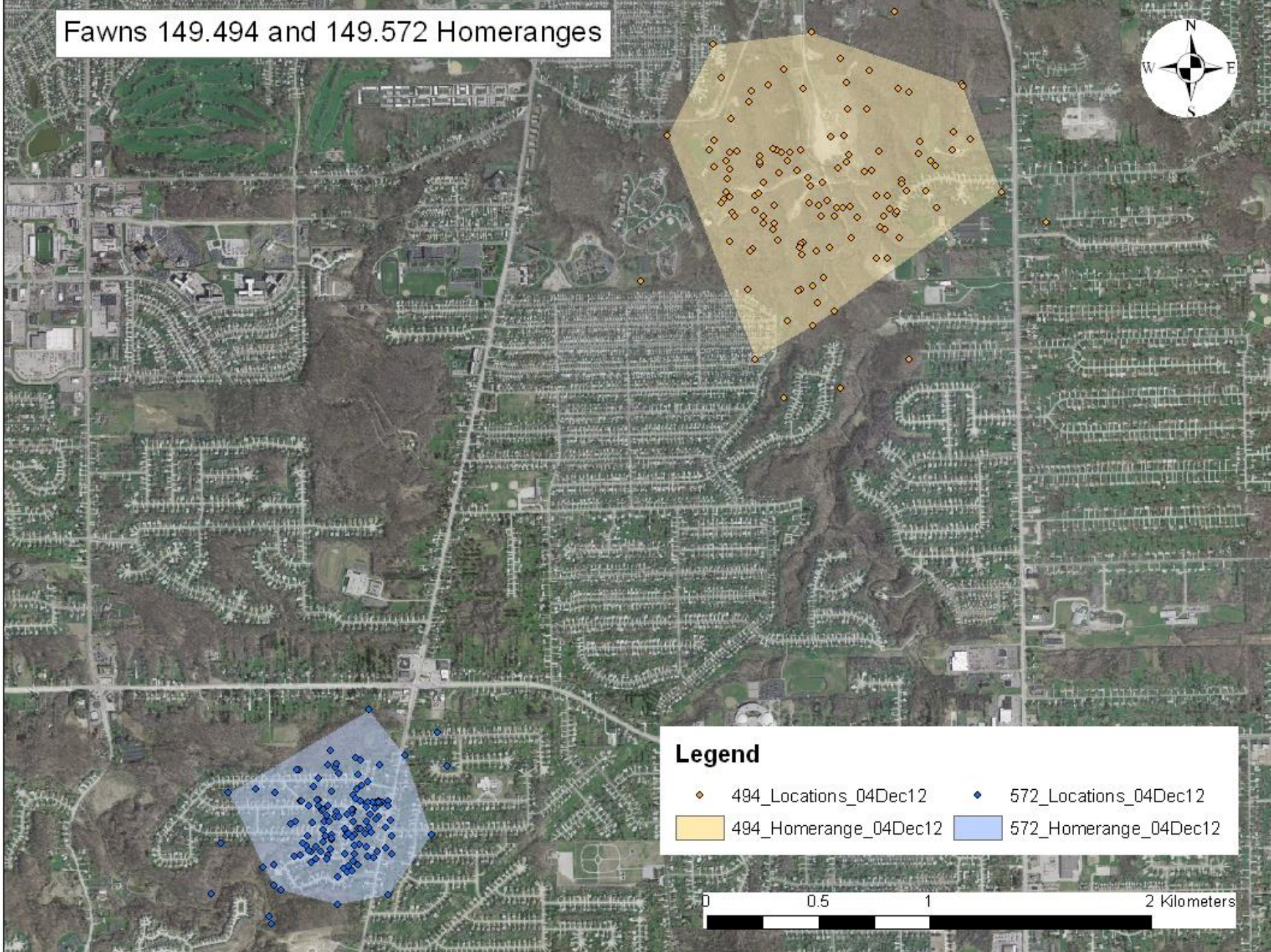
# Doe 148.206 and Fawns



Legend	
	206_Locations_04Dec12
	233_Locations_04Dec12
	474_Locations_04Dec12
	206_Homerange_04Dec12
	233_Homerange_04Dec12
	474_Homerange_04Dec12

0 50100 200 Meters

# Fawns 149.494 and 149.572 Homeranges



## Legend

- ◆ 494\_Locations\_04Dec12
- ◆ 572\_Locations\_04Dec12
- 494\_Homerange\_04Dec12
- 572\_Homerange\_04Dec12

