



Cleveland
Metroparks

**COME OUT
AND PLAY**



Edgewater Park Improvements and Replacement Beach House Update





Cleveland
Metroparks

COME OUT
AND PLAY



LAKEFRONT RESERVATION MAP



F
PI
BI
RO:
WES

IVE



Cleveland Metroparks

COME OUT AND PLAY

LAKEFRONT RESERVATION MASTER PLAN - EDGEWATER BEACH



EXPAND / ENHANCE EXISTING PIER
MAINTAIN FISHING

CONCESSION WITH POSSIBLE DECK / STAGE AND VIEWING DECK

TERRACED WATERFRONT SEATING

EVENT LAWN

RECONFIGURE EXISTING PARKING TO CREATE DROP-OFF ZONE AND CONNECT BAYS

ARRIVAL PLAZA WITH SEATING AND PLACEMAKING FEATURES

DUNES AND SEAT WALLS TO CONTAIN SAND AND GUIDE FOOT TRAFFIC

PROPOSED EDGEWATER BEACH HOUSE

BIKE BOX AND BIKE PARKING

ROADWAY CONNECTION AT WEST 73RD



THEMED PLAY AREA AND SEATING AREA

SHADED SWINGING BENCHES

RECONFIGURE / EXPAND PARKING. ADD LOOP DRIVE AND DROP-OFF AREA WITH LAWN PARKING AS OVERFLOW

BREAKWATER WALKWAY WITH FISHING ACCESS, SEATING AND OVERLOOK AREAS

EDGEWATER YACHT CLUB

ENTRY ROUNDABOUT COMPLETION SPRING 2016 - OVERALL COMPLETION 2017 (ODOT)

EDGEWATER MARINA

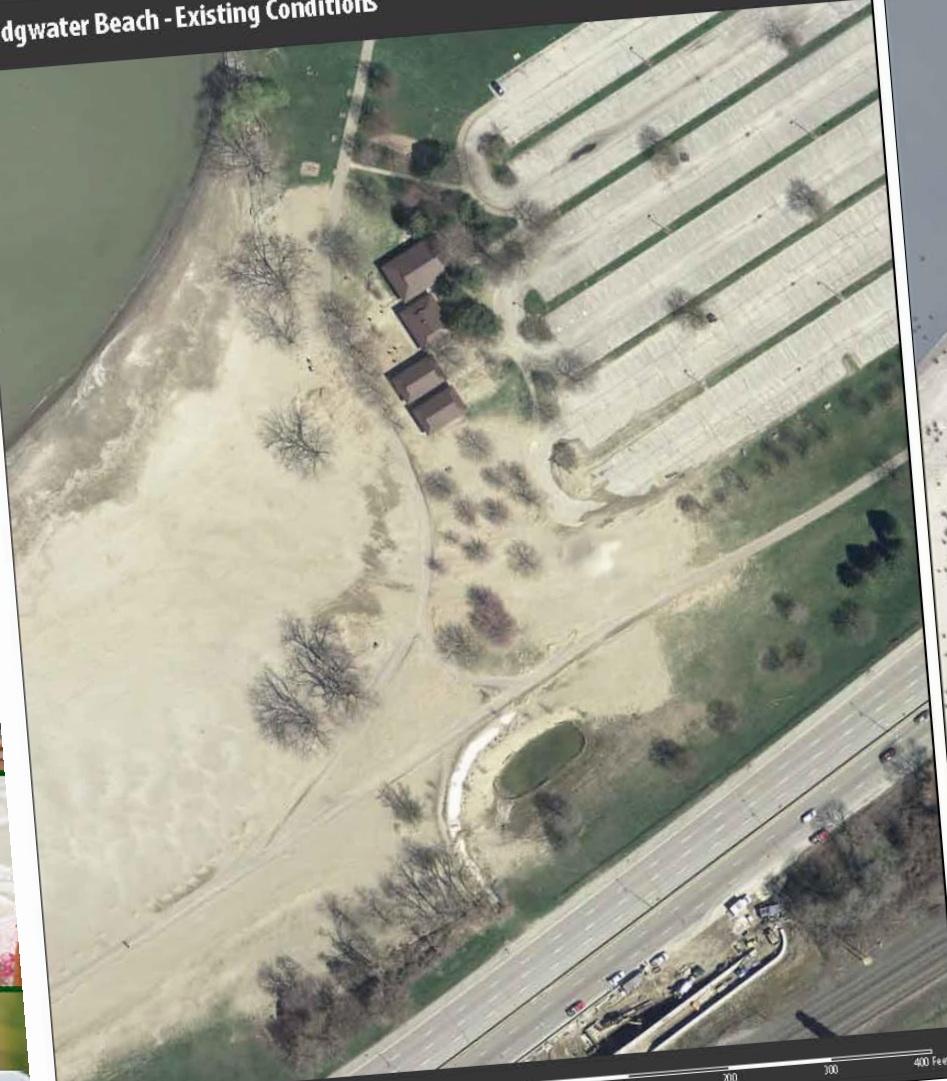
ADD TRAIL CONNECTION TO WENDY PARK. ADD LANDSCAPING TO IMPROVE CORRIDOR

WEST 65TH TRAIL AND TUNNEL CONNECTION TO NEIGHBORHOOD

LAKEFRONT RESERVATION | MARCH 2015



Edgewater Beach - Existing Conditions



Edgewater Beach - Proposed Improvements



*Trails,
Infrastructure,
Plaza, Foot Wash
and Bike Parking*

*Parking Lot
Improvements*

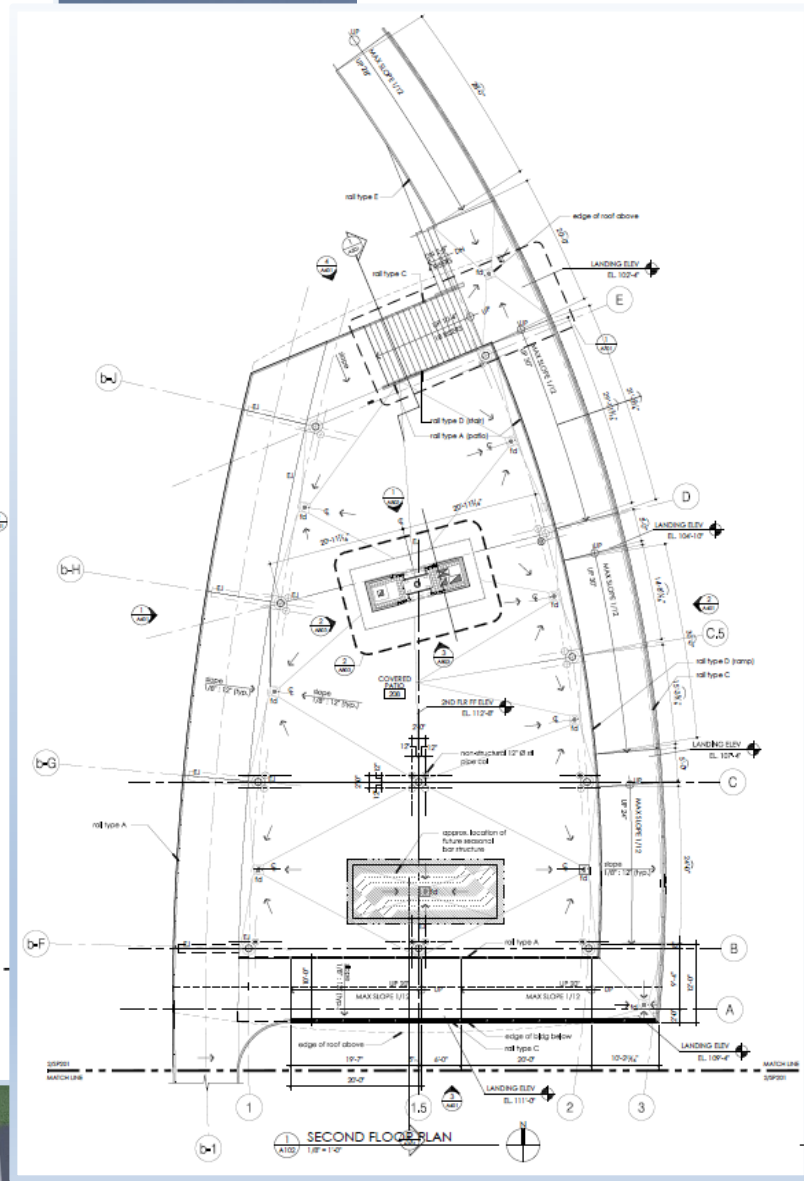
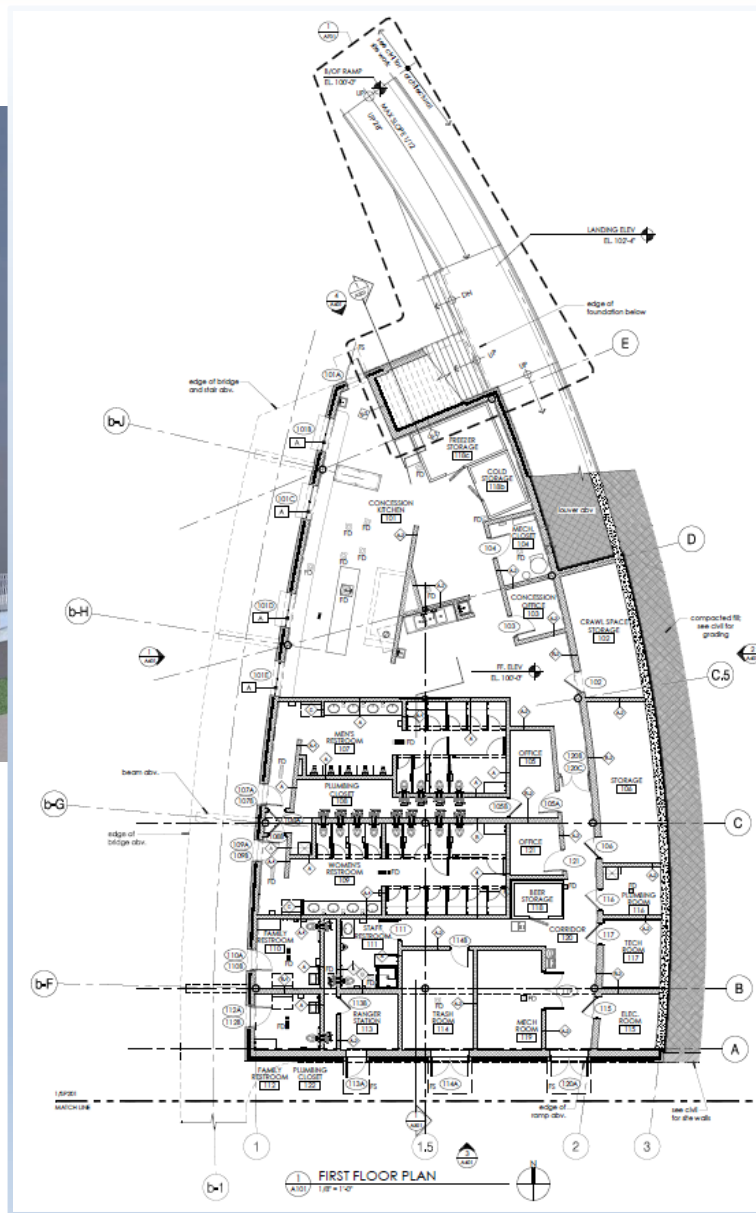
*Replacement
Beach House*

*Elevated
Community
Connector to
Detroit Shoreway
Neighborhood*

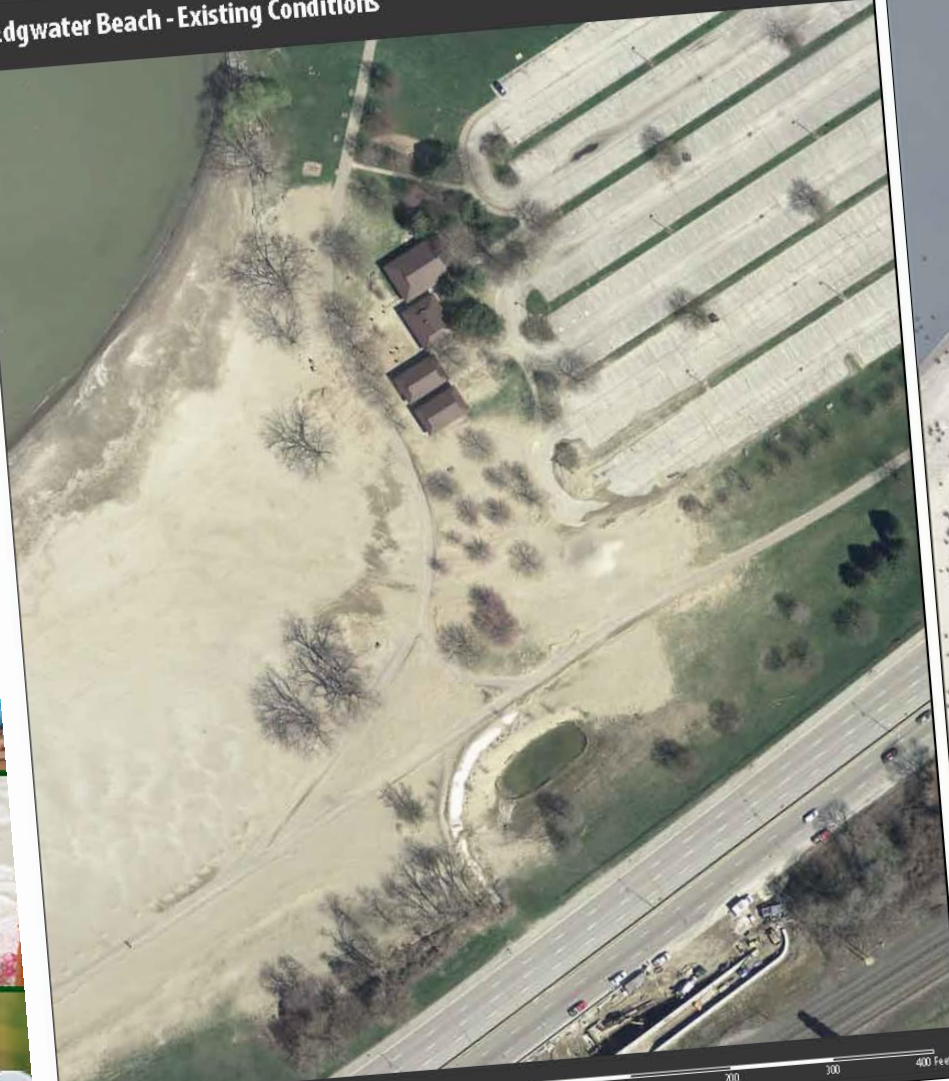


Cleveland
Metroparks

COME OUT
AND PLAY



Edgewater Beach - Existing Conditions



Edgewater Beach - Proposed Improvements



*Trails,
Infrastructure,
Plaza, Foot Wash
and Bike Parking*

*Parking Lot
Improvements*

*Replacement
Beach House*

*Elevated
Community
Connector to
Detroit Shoreway
Neighborhood*





Cleveland
Metroparks

**COME OUT
AND PLAY**



Edgewater Park Improvements and Replacement Beach House Update



LAKEFRONT RESERVATION MASTER PLAN - EDGEWATER BLUFFS

PROVIDE TRAIL ALONG PERKINS BEACH

REPAIR BEACH STABILIZATION STRUCTURES

RECONFIGURE EXISTING CIRCLE LOT. PROVIDE PARKING, OPERATIONS ACCESS TO PERKINS BEACH, AND OVERLOOK WITH VIEWS OF DOWNTOWN AND LAKE ERIE

ADD SHELTER AND THEMED PLAY AREA / GATHERING SPACE

CREATE TRAIL LINK FROM BLUFF TOP TO BEACH, WITH CONNECTIONS TO PERKINS AREA

GREAT LAWN - OPEN SPACE FOR KITES, FRISBEEES, AND PICK-UP SPORTS

RELOCATE MAINTENANCE FUNCTION AND UPGRADE BUILDING. CREATE CONCESSION SPACE AND PLAZA ON LAWN SIDE OF BUILDING

ROUTE DRIVE TO TERMINATE IN NEW CUL-DE-SAC RATHER THAN THROUGH PARKING LOT

LAKE AVENUE TRAIL CONNECTION TO NEIGHBORHOOD

LAKE ERIE

LAKE AVE

SHORE WAY

GRAND STAIRWAY WITH UPPER AND LOWER TERRACES AND TRAIL CONNECTIONS

LOWER TRAIL ALONG BEACH

SEE EDGEWATER BEACH - SEE PLAN FOR ADJACENT PROPOSED IMPROVEMENTS

EDGEWATER PROPOSED BEACH HOUSE

RENOVATE HISTORIC PAVILION. UPGRADE RESTROOMS

REPAIR HISTORIC STABLE STRUCTURES. USE FOR STORAGE AND OPERATIONS SUPPORT

BATTERY PARK / WEST 76TH TRAIL AND TUNNEL CONNECTION TO NEIGHBORHOOD



LAKEFRONT RESERVATION | MARCH 2015

