

# TIME TO EXPLORE

Cleveland Metroparks

## 2018 Reservation Plan Updates

Bradley Woods  
Huntington  
Rocky River  
Mill Stream Run

Board of Park Commissioners  
August 16, 2018





# SCHEDULE

Work Session 1 – Jan. 31<sup>st</sup>

Charettes – Area Concept Planning – Mar. 7<sup>th</sup>

Work Session 2 Concept 1 – Mar. 27<sup>th</sup>

Work Session 3 Concept 2 – June 25<sup>th</sup>

Leadership / Chiefs Review – July

Outside Stakeholder Meetings – July / August

**Draft to Board – August 16<sup>th</sup>**

***Open Houses – September 11, 12, 13, 17, 18, 19***

Work Session 4 Final Review October

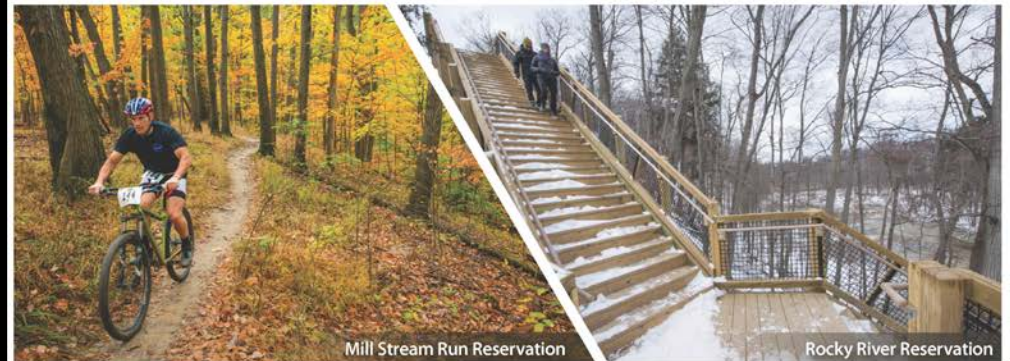
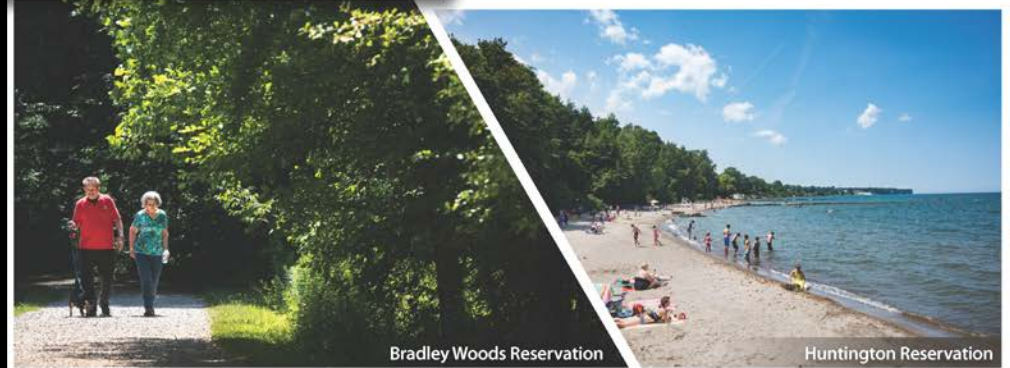
Final to Board December 20<sup>th</sup>

2018

Bradley Woods | Huntington | Mill Stream Run | Rocky River

## Cleveland Metroparks<sup>®</sup> Reservation Plan Open Houses

Master Plans for Bradley Woods, Huntington, Mill Stream Run and Rocky River Reservations are being updated this year. The plans will help shape efforts in the parks over the next two to twenty years. Please join Cleveland Metroparks staff at the following Public Open Houses to share your ideas for the future of the parks.



Open Houses are from 5:30 - 7:00 p.m. with a short presentation at 6:00 p.m.

- Tuesday, September 11 | Bradley Woods Reservation | Codrington Shelter
- Wednesday, September 12 | Huntington Reservation | Lake Erie Nature and Science Center
- Thursday, September 13 | Rocky River Reservation | Emerald Necklace Marina in Scenic Park
- Monday, September 17 | Fat Head's Brewery | 24581 Lorain Road
- Tuesday, September 18 | Rocky River Reservation | Nature Center
- Wednesday, September 19 | Mill Stream Run Reservation | Albion Woods Shelter

Plans and comment forms will be available for all reservations at each meeting,

# OVERVIEW

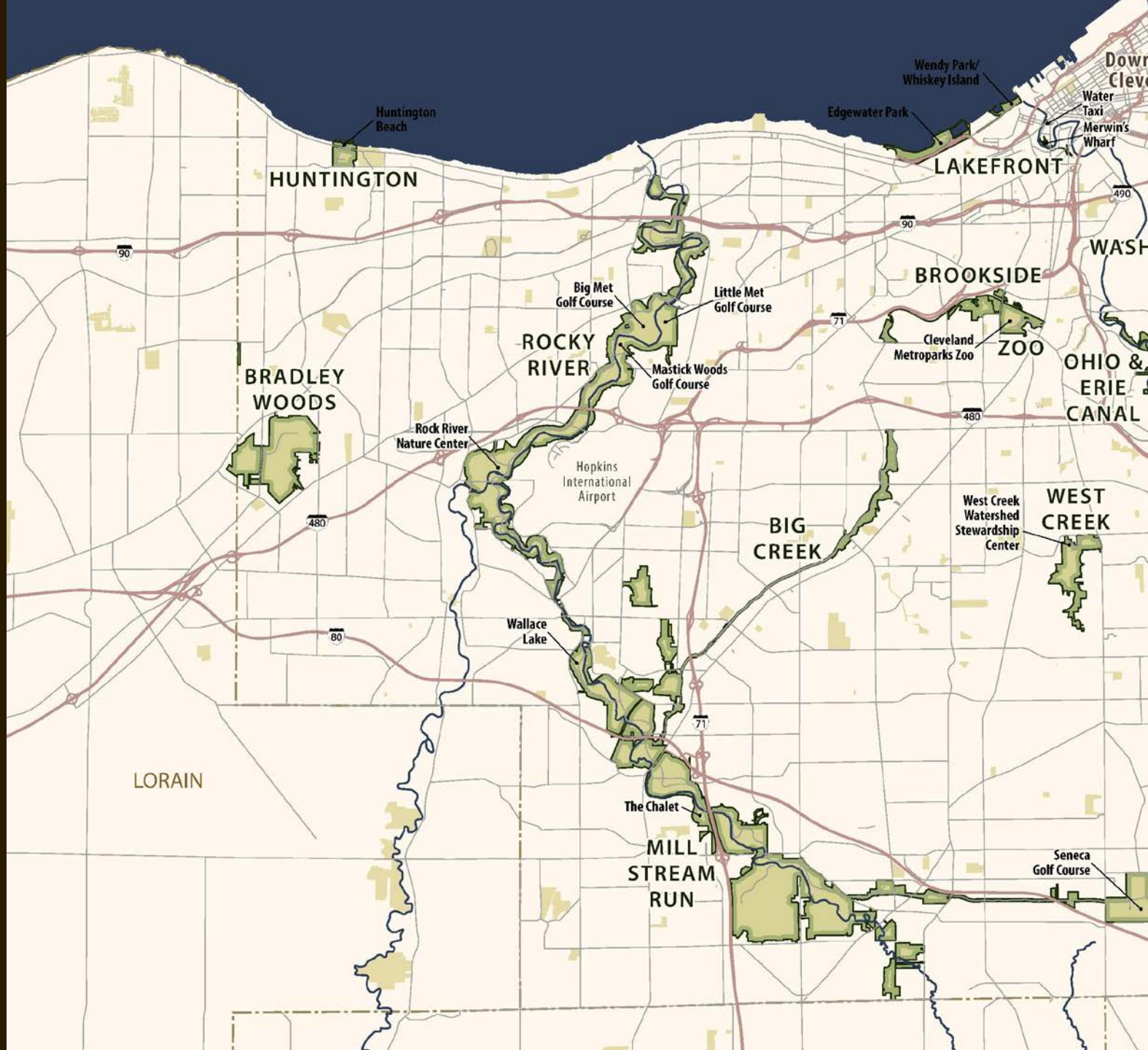
- Planning for over 7,000 acres this year
- High visitation and use
- Some of the oldest developed areas in the Park District
- Wide range of recreation
- Restoration opportunities
- Typically surrounded by development - improve community links

Rank: Size	Reservation	2017 acres
	Brecksville	4085
2	Mill Stream Run	3478
3	Hinckley	2953
4	Rocky River	2579
5	Bedford	2336
6	North Chagrin	2184
7	South Chagrin	1634
8	Bradley Woods	828
9	Big Creek	770
10	Euclid Creek	473
11	Lakefront	465
12	West Creek	375
13	Ohio & Erie Canal	372
14	Garfield	219
15	Zoo	178
16	Acacia	156
17	Brookside	132
18	Huntington	103
19	Washington	59

Rank: Rec Visits	Reservation	Rec visits (2016)
1	Rocky River	3,074,678
2	Lakefront	2,442,572
3	Mill Stream Run	2,097,852
4	Brecksville	1,428,082
5	North Chagrin	1,251,150
6	Euclid Creek	1,037,172
7	Zoo	1,023,608
8	Hinckley	771,809
9	Big Creek	767,351
10	Bedford	757,883
11	Huntington	755,486
12	South Chagrin	640,060
13	Ohio & Erie Canal	416,102
14	Garfield	413,622
15	Brookside	262,423
16	Washington	141,423
17	West Creek	134,792
18	Acacia	112,071
19	Bradley Woods	96,520

Rank: Visit Occ.	Reservation	Visit occ. (2016)
3	Mill Stream Run	11,001,879
9	Big Creek	8,861,827
1	Rocky River	6,833,834
4	Brecksville	4,490,682
12	South Chagrin	2,782,152
2	Lakefront	2,442,572
14	Garfield	2,223,875
6	Euclid Creek	2,024,261
5	North Chagrin	1,629,597
10	Bedford	1,042,483
7	Zoo	1,023,608
11	Huntington	993,064
8	Hinckley	771,809
13	Ohio & Erie Canal	416,102
15	Brookside	262,423
16	Washington	141,423
17	West Creek	134,792
18	Acacia	112,071
19	Bradley Woods	96,520





BRADLEY WOODS  
HUNTINGTON  
ROCKY RIVER  
MILL STREAM RUN

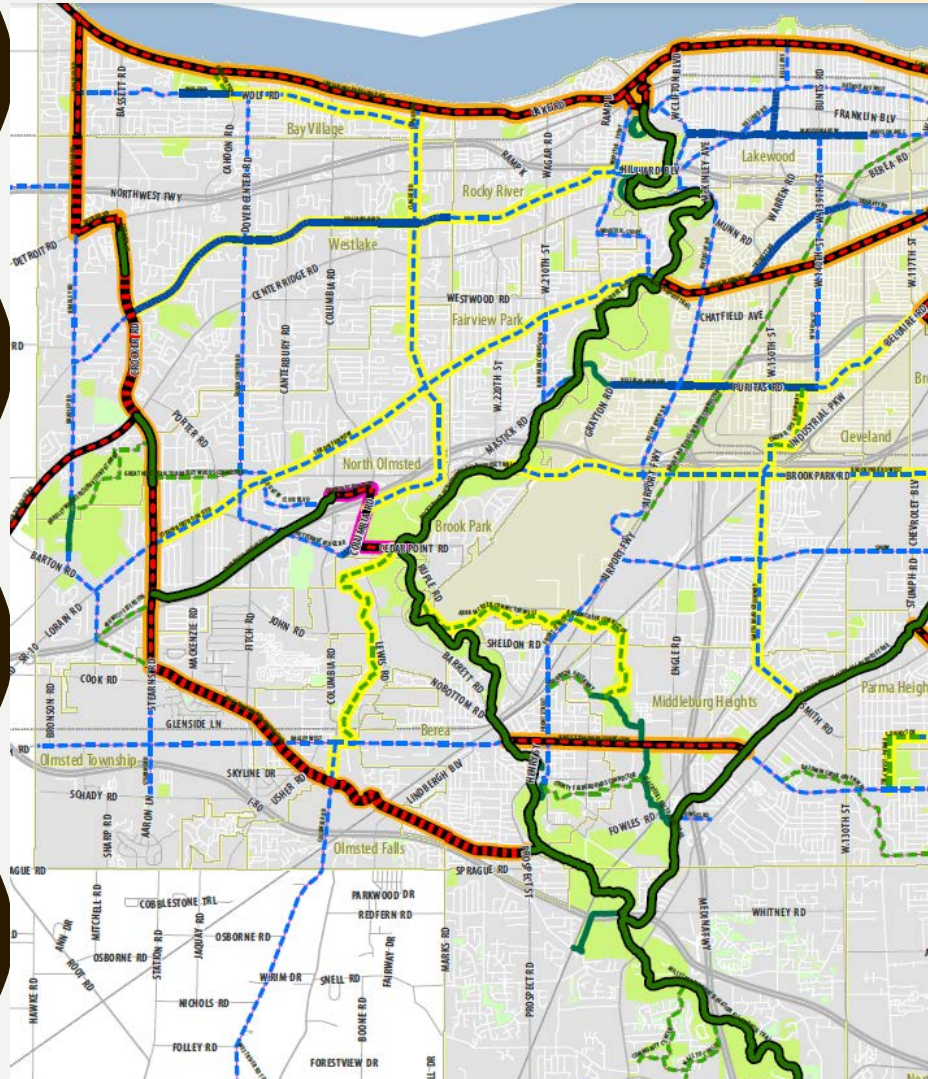
- Huntington Lakefront
- Scenic Park
- Rocky River Nature Center
- Lagoon Picnic Area
- Wallace Lake
- Bonnie Park
- Royalview



# CONNECTIONS

## Bike and Walk Shed

### Cuyahoga Greenways











# BRADLEY WOODS

Add boardwalk / APT to  
connect core of park

West to Bradley Road

East to Crocker Road

Add striping and signage to  
use maintenance drive as trail

Promote awareness of rare  
swamp forest ecosystem and  
Quarry Lake trail

Consider small viewing blind  
and deck updates





# HUNTINGTON

- Reinvest in lakefront amenities
- Address beach and bluff erosion
- Remove / modernize facilities
- Improve circulation and accessibility
- Lakefront regional links and water trail



# ROCKY RIVER

## North of Lorain

- Mile Marker Zero and Lake Erie connections (work with communities to study bridges & bike/ped improvements)
- Scenic Park greening & bulkhead repairs; water trail
- Memorial and Tyler Fields condition, safety/traffic

## South of Lorain

- APT Loop on east side of river
- Implement Mastick plan

## Shephard to Bagley

- RRNC – River stabilization; add APT, renovated trail loop
- Lagoon – close one drive, add boardwalk at wetland, enclose existing shelter, add play feature
- Trail link to Big Creek (Brook Park Plan)
- Berea Falls trailhead amenities





# MILL STREAM RUN

## Wallace Lake

- Update building and restrooms
- Parking – add storm water BMPs
- Add site improvements and plantings
- Outdoor rec opportunities / kayaks

## Bonnie Park - VRRSP Restoration

- Supplement with overlook

## Connections – consider:

- South from Chalet
- West from Royalview
- North from Pawpaw @ I30<sup>th</sup>

## Royalview improvements

- Lower lot restroom / changing
- Upper lot area renovation; add shade structure





