

TIME TO EXPLORE

Cleveland Metroparks

Trails Matrix: Round 5

Board of Park Commissioners
June 11, 2019



2015 Strategic Planning Update



Acquire & manage parks to conserve natural resources and contribute to green infrastructure



Advance trails that connect with local, state and regional trails



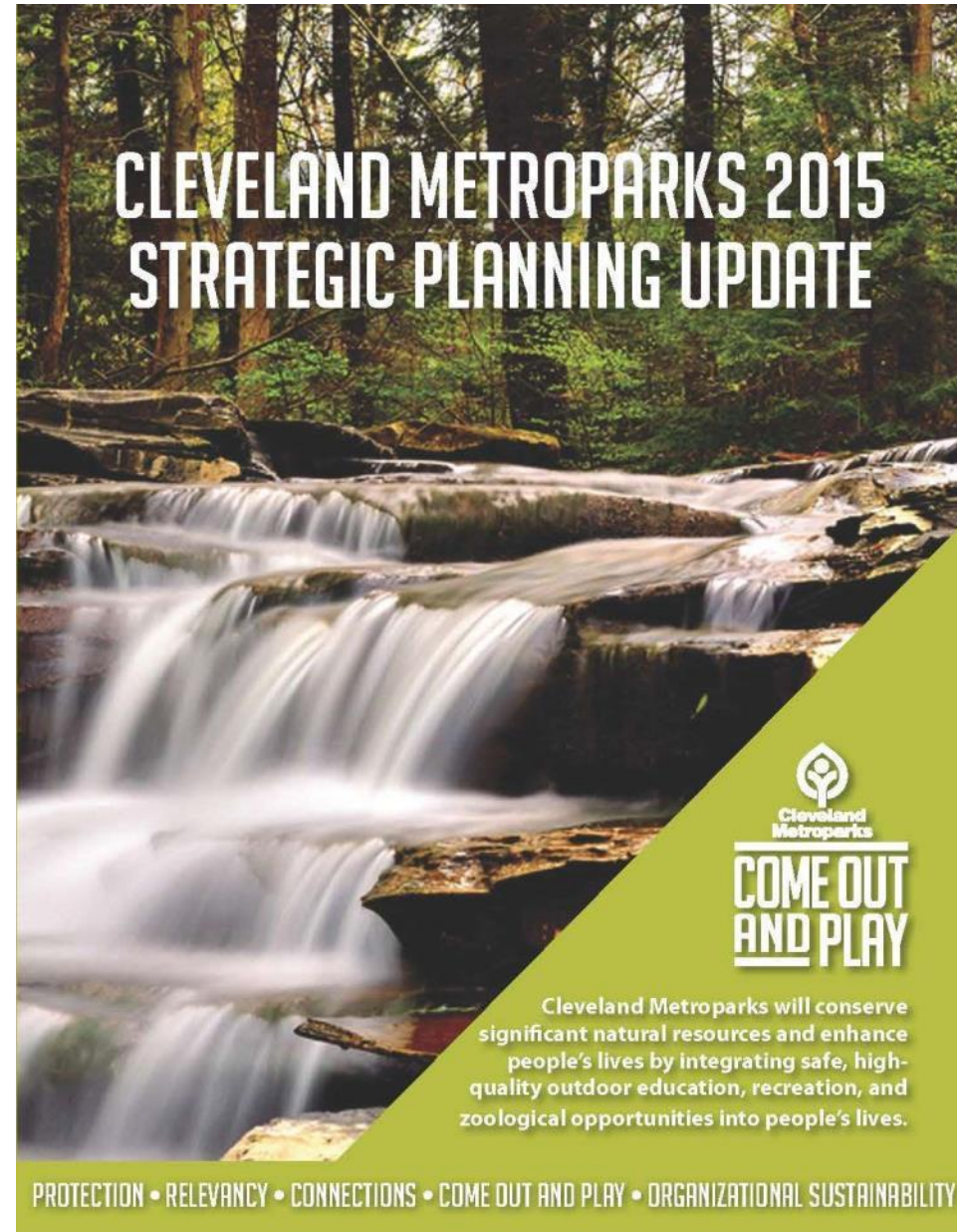
Expand and strengthen outdoor recreation



Support resurgence of City of Cleveland



Continue sustainable business practices



CONNECTIONS



Advance connections and trail systems that complete the Emerald Necklace and, in partnership with other agencies and communities, connect with local, state and regional trail networks, communities and places of interest.

Participation in Community Planning

- 48 diverse communities across six counties
- Community Master Plans
- NEO Regional Parks Collaboration
- Transportation for Livable Communities Initiative (TLCI) Studies through NOACA
- Cuyahoga Greenways



GREENWAY PROJECTS

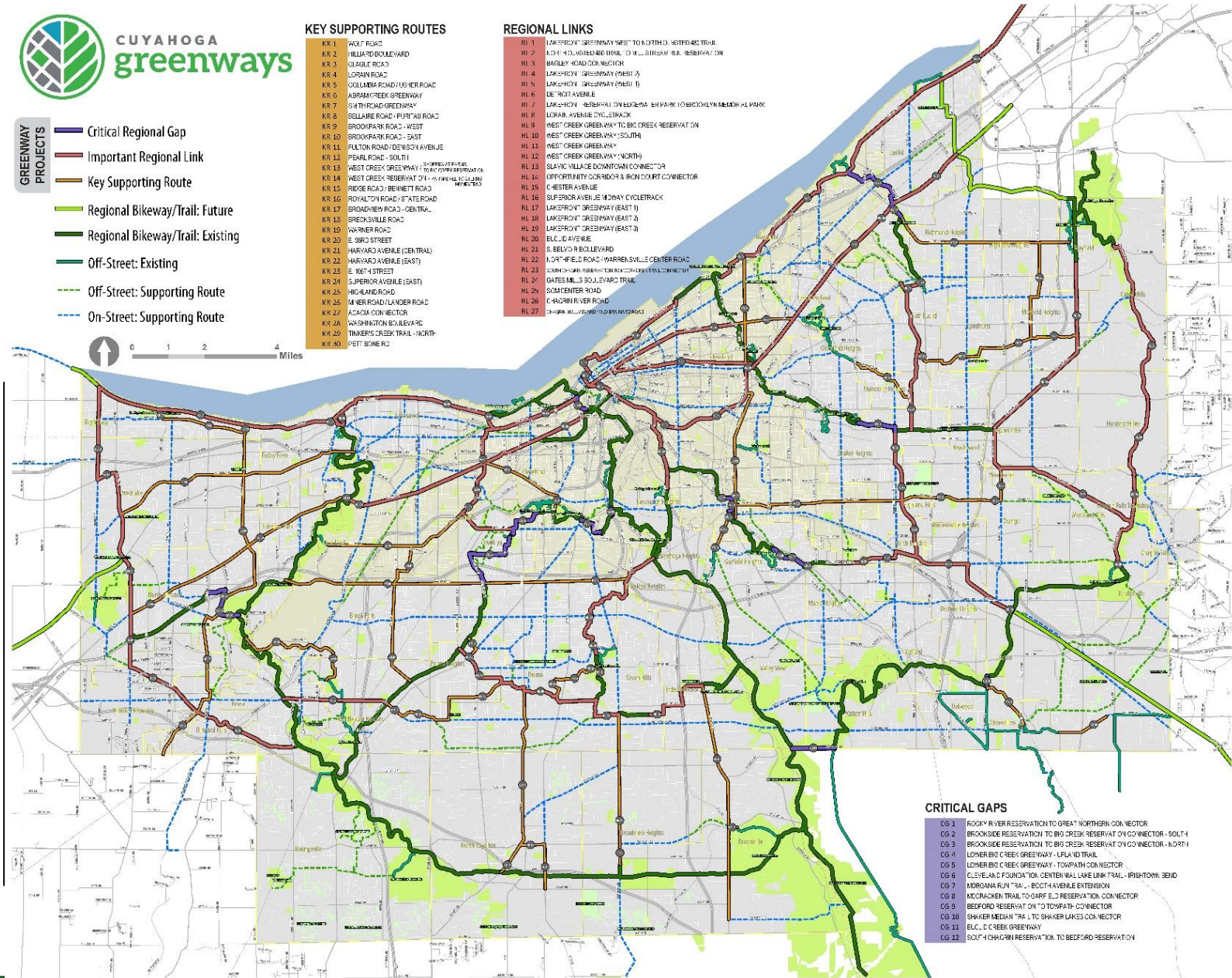
- Critical Regional Gap
- Important Regional Link
- Key Supporting Route
- Regional Bikeway/Trail: Future
- Regional Bikeway/Trail: Existing
- Off-Street: Existing
- Off-Street: Supporting Route
- On-Street: Supporting Route

KEY SUPPORTING ROUTES

- KR 1 WOLF ROAD
- KR 2 HILLIARD BOULEVARD
- KR 3 CHAGRIE ROAD
- KR 4 CROWN ROAD
- KR 5 COLLAMBA ROAD/WARNER ROAD
- KR 6 ADRIAN CREEK GREENWAY
- KR 7 SATH ROAD GREENWAY
- KR 8 BELLARE ROAD - PUPITAB ROAD
- KR 9 BROOKPARK ROAD - WEST
- KR 10 BROOKPARK ROAD - EAST
- KR 11 FULTON ROAD/DEWSON AVENUE
- KR 12 PEARL ROAD - SOUTH
- KR 13 WEST CREEK GREENWAY - OFF-ROAD
- KR 14 WEST CREEK RESERVATION - OFF-ROAD
- KR 15 RIDGE ROAD - BENNETT ROAD
- KR 16 ROYAL TOWN ROAD - WATER ROAD
- KR 17 BROADVIEW ROAD - CENTRAL
- KR 18 BRECKVILLE ROAD
- KR 19 WARNER ROAD
- KR 20 E. SROD STREET
- KR 21 HARVARD AVENUE (CENTRAL)
- KR 22 HARVARD AVENUE (EAST)
- KR 23 E. WEST STREET
- KR 24 SUPERIOR AVENUE (EAST)
- KR 25 HIGHLAND ROAD
- KR 26 MERRILL ROAD/LANDER ROAD
- KR 27 ACACIA CON NECTOR
- KR 28 WASHINGTON BOULEVARD
- KR 29 TANKERS CREEK TRAIL - NORTH
- KR 30 PETT BONE RD

REGIONAL LINKS

- RL 1 LAKEPROV GREENWAY WEST TO BORTHOL RESTED ACETRAL
- RL 2 AUSTIN WOODHURST TRAIL TO MILL STREAM RIVER RESERVATION
- RL 3 BARLEY WOODHURST TRAIL
- RL 4 LAKEPROV GREENWAY (WEST 2)
- RL 5 LAKESHORE GREENWAY (WEST 1)
- RL 6 DE'ROIT AVENUE
- RL 7 LAKESHORE - BERKHAM ON BURGAM - BR PARK TO BRIDGEMAN MEMORIAL PARK
- RL 8 LORAIN AVENUE CYCLETRACK
- RL 9 WEST CREEK GREENWAY TO BIG CREEK RESERVATION
- RL 10 WEST CREEK GREENWAY (SOUTH)
- RL 11 WEST CREEK GREENWAY
- RL 12 WEST CREEK GREENWAY (NORTH)
- RL 13 SLARIC VILLAGE DOWNTOWN CONNECTOR
- RL 14 OPPORTUNITY CORRIDOR & IRON COURT CONNECTOR
- RL 15 CHESTER AVENUE
- RL 16 SUPERIOR AVENUE MONAY CYCLETRACK
- RL 17 LAKEPROV GREENWAY (EAST 1)
- RL 18 LAKEPROV GREENWAY (EAST 2)
- RL 19 LAKEPROV GREENWAY (EAST 3)
- RL 20 ELLICOTT AVENUE
- RL 21 S. BELVOIR BOULEVARD
- RL 22 AUSTIN WOODHURST TRAIL - WARRENVILLE CENTER ROAD
- RL 23 COUNCHBUSH RESERVATION TO COUNCIL BLUFFS CONNECTOR
- RL 24 GATES MILLS BOULEVARD TRAIL
- RL 25 SOM CENTER ROAD
- RL 26 CHAGRIN RIVER ROAD
- RL 27 CHAGRIN RIVER ROAD TO BIRCHWOOD PARK



CRITICAL GAPS

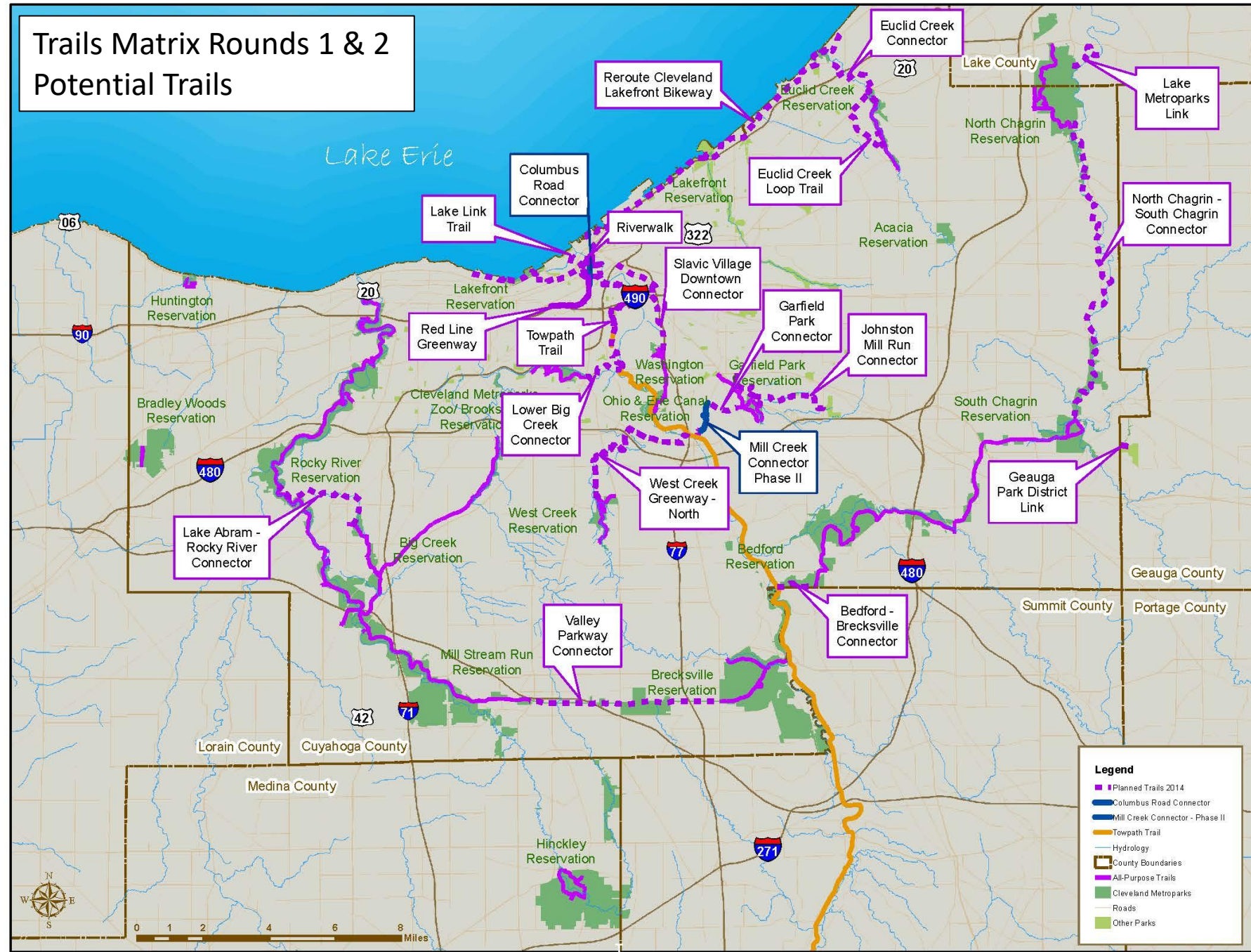
- CG 1 ROCKY RIVER RESERVATION TO GREAT NORTHERN CONNECTOR
- CG 2 BROOKSIDE RESERVATION TO BIG CREEK RESERVATION ON CONNECTOR - SOUTH
- CG 3 BROOKSIDE RESERVATION TO BIG CREEK RESERVATION ON CONNECTOR - NORTH
- CG 4 LOWER BIG CREEK GREENWAY - LFLAND TRAIL
- CG 5 LOWER BIG CREEK GREENWAY - TOWPATH CONNECTOR
- CG 6 CLEVELAND FOUNDATION CENTENNIAL LAKE LINK TRAIL - IRISH TOWN BEND
- CG 7 MORGANA RUN TRAIL - BOOTH AVENUE EXTENSION
- CG 8 MORGANA TRAIL TO SHARPE E.D. RESERVATION CONNECTOR
- CG 9 BEDFORD RESERVATION TO TOWPATH CONNECTOR
- CG 10 SHAKER MEADOW TRAIL TO SHAKER LAKES CONNECTOR
- CG 11 ELLICOTT CREEK GREENWAY
- CG 12 SOUTH CHAGRIN RESERVATION TO BEDFORD RESERVATION

Trail Matrix Attributes

- Tool to evaluate potential opportunities for Cleveland Metroparks to pursue or support
- 14 attributes such as public benefit, user populations, and trail experiences:
 - Type of Trail/Potential Popularity
 - Community Benefit
 - Uses
 - Trail Experiences
 - Length of Trail
 - Population Within One Mile of Trail
 - Community Support/Partnerships
 - Planning
 - Ease of Implementation
 - Known Challenges
 - Costs - Acquisition
 - Costs - Construction
 - Trail Infrastructure/Sustainability
 - Maintenance/Operational Costs

TRAIL ATTRIBUTES		Valley Parkway Connector
Variety of habitats/sights/views/overlooks	2	2
Maximum Score/Total:	17	11
Length of Trail (choose one)		
>3 miles	3	3
1 to 3 miles	2	
< 1 mile	1	
Maximum Score/Total:	3	3
Population Within One Mile of Trail (choose one)		
>25,000 (or considered a regional/statewide trail)	4	4
10,000 - 25,000	3	
< 10,000	1	
Maximum Score/Total:	4	4
Community Support/Partnerships (choose all relevant)		
Regional and/or Statewide Support	3	3
County/Park District Support	3	3
Local Support and meshes with community goals/plans	1	1
Partnerships agreed to cost share studies/construction	2	2

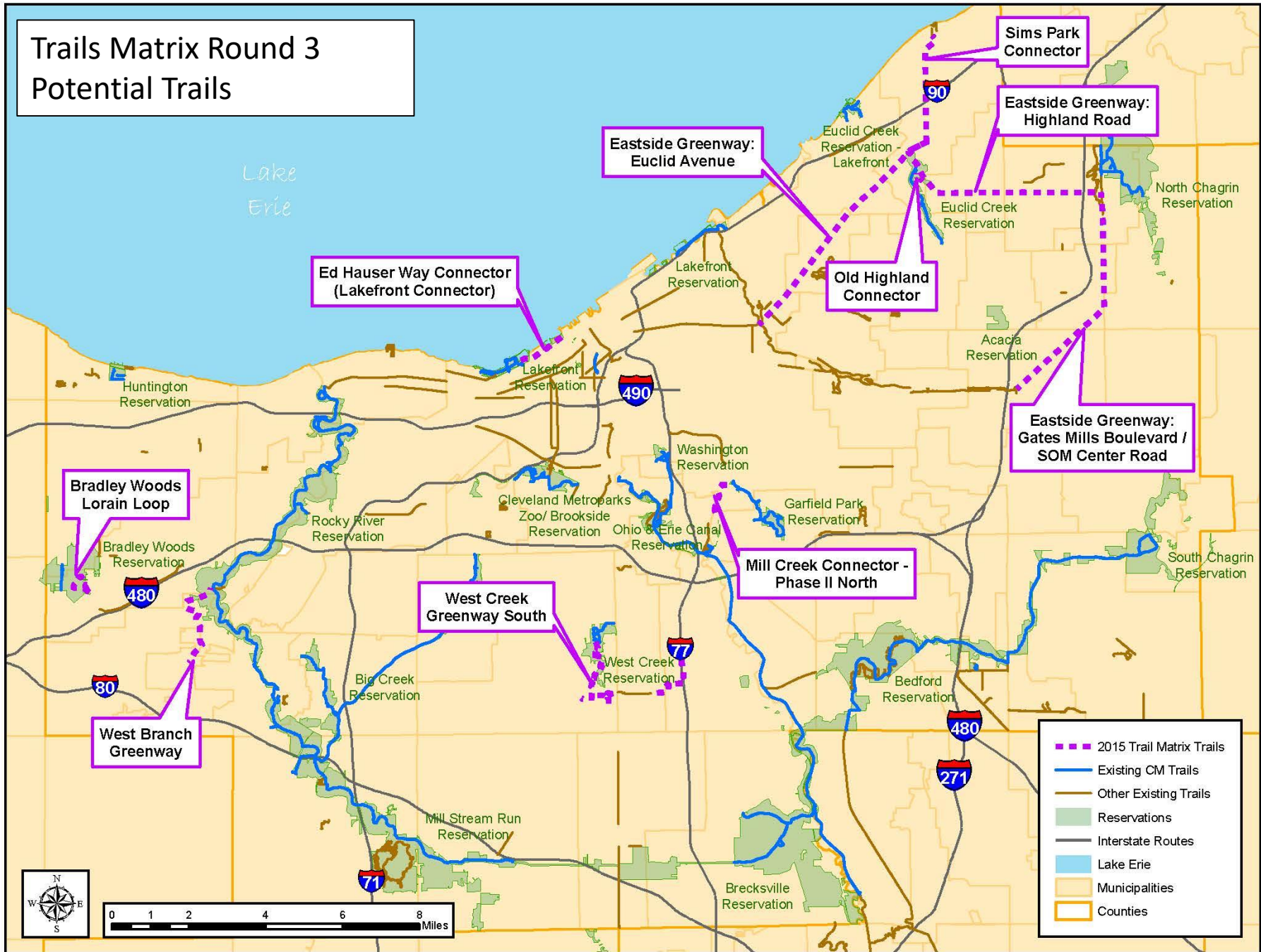
Trails Matrix Rounds 1 & 2 Potential Trails



Legend

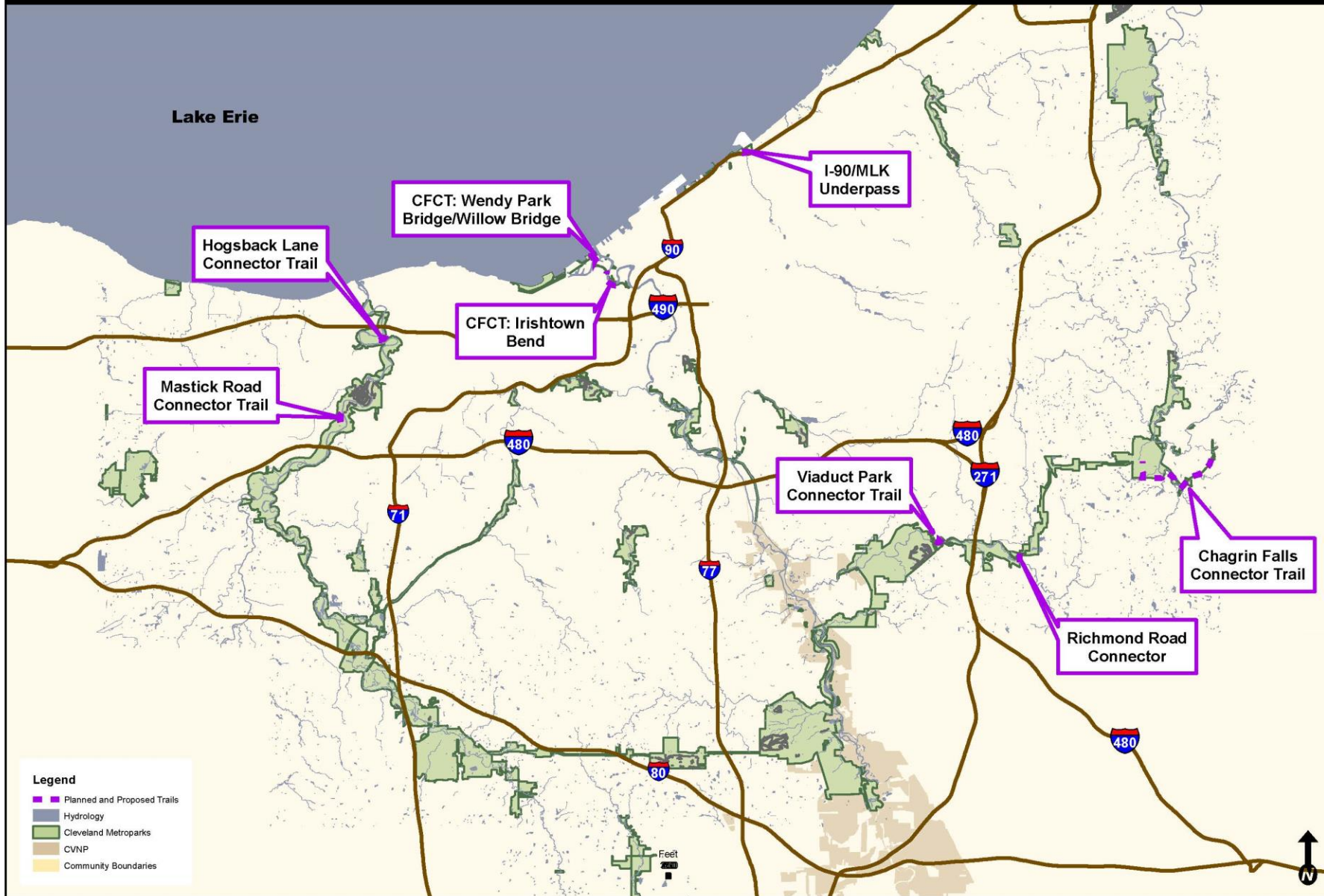
- Planned Trails 2014
- Columbus Road Connector
- Mill Creek Connector - Phase II
- Towpath Trail
- Hydrology
- County Boundaries
- All-Purpose Trails
- Cleveland Metroparks
- Roads
- Other Parks

Trails Matrix Round 3 Potential Trails



- - - 2015 Trail Matrix Trails
- Existing CM Trails
- Other Existing Trails
- Reservations
- Interstate Routes
- Lake Erie
- Municipalities
- Counties

Planned/Proposed Trails



Trails Completed/Opening by 2020

<u>Score</u>	<u>Trail Name</u>
87	Towpath Trail: Stages 1, 3 & 4
80	Whiskey Island Connector (Ed Hauser Way)
78	Valley Parkway Connector Trail
78	Cleveland Foundation Centennial Trail: Phases I & II
77	CFCT: Wendy Park Bridge
63	Red Line Greenway
56	I-90 MLK/Underpass & Connections
42	Columbus Road Connector (Sharrows)
30	Mill Creek Connector: South Phase II

New Trails Matrix Trails – Round 5

<u>Score</u>	<u>Trail Name</u>
71	Lower Big Creek Greenway – Upland Henninger Trail*
51	Lorain Avenue Cycle Track
46	Superior Avenue Midway
42	Brookside Reservation to Big Creek Reservation – North*
41	Lower Big Creek Greenway – Towpath Connector
41	W. 65th Street to Max Hayes High School
41	Morgana Run Trail – Booth Avenue Extension
37	Brookside Reservation to Big Creek Reservation – South*
36	Opportunity Corridor and Iron Court Connector
36	Solon to Chagrin Falls Connector*
27	Bradley Woods Res./North Olmsted 480 Trail to Mill Stream Run Res.
24	Rocky River Reservation to Great Northern Connector
26	McCracken Trail to Garfield Reservation Connector

Major Trails

<u>Score</u>	<u>Trail Name</u>
76	CFCT: North to Wendy Park Bridge
76	Eastside Lakefront Greenway
73	CFCT: Irishtown Bend
71	Lower Big Creek Greenway – Upland Henninger Trail*
70	West Creek Greenway: North
60	Bedford-Brecksville Reservation Connector
57	Euclid Creek Greenway
56	Slavic Village - Downtown Connector
55	Cuyahoga Riverwalk
52	West Creek Greenway: South/Hemlock Trail
43	Lake Abram - Rocky River Connector
41	Morgana Run Trail – Booth Avenue Extension
38	Johnston Mill Run Trail
37	Brookside Reservation to Big Creek Reservation – South*
36	Solon to Chagrin Falls Connector*
36	Opportunity Corridor and Iron Court Connector
27	Bradley Woods Reservation/North Olmsted 480 Trail to Mill Stream Run Reservation
26	McCracken Trail to Garfield Reservation Connector
24	Rocky River Reservation to Great Northern Connector
19	Rocky River West Branch Greenway

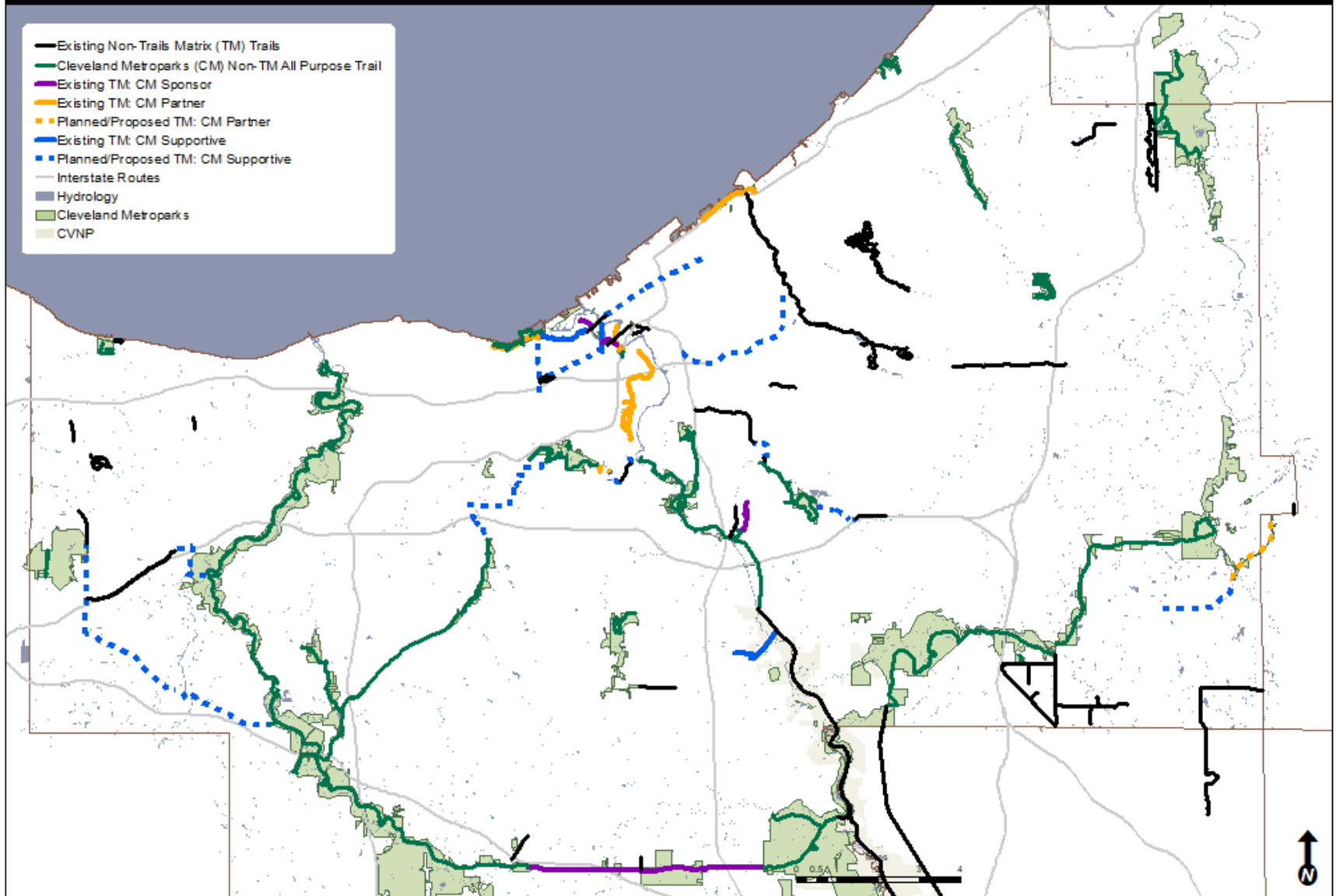
Gap Closure or Neighborhood Connector

<u>Score</u>	<u>Trail Name</u>
43	Bedford Reservation: Richmond Road Connector
43	Bedford Reservation: Viaduct Park Connector Trail
42	Brookside Reservation to Big Creek Reservation – North*
41	Lower Big Creek Greenway – Towpath Connector
39	Hogsback Lane Connector Trail
36	Geauga Park District Link
34	Mastick Road Connector Trail
30	Euclid Creek Reservation: Old Highland Connector
24	Lake Metroparks Link
24	Euclid Creek Reservation: Upper Loop Trail
21	Bradley Woods Reservation: Crocker/Stearns to Bailus

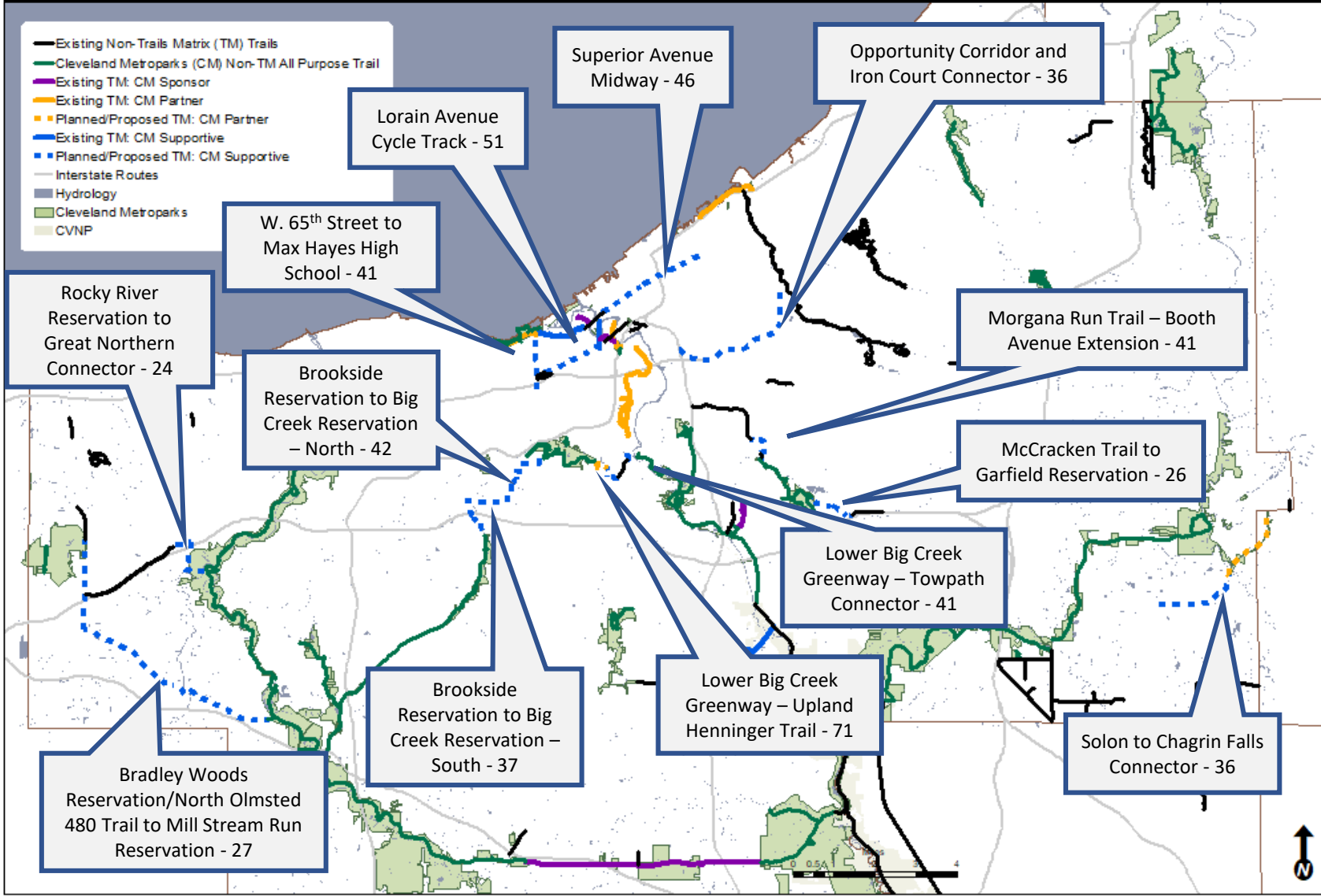
Trails within Public Rights-of-Way or Bike Lanes

<u>Score</u>	<u>Trail Name</u>
51	Lorain Avenue Cycle Track
49	Gates Mills Boulevard/SOM Center Road
47	Garfield Boulevard Connector Trail
46	Euclid Ave. Bike Lanes: E. 222nd St. to E. 105 th St.
46	Superior Avenue Midway
41	Sims Park/E. 222nd Street Connector
41	W. 65th Street to Max Hayes High School
33	Highland Road Trail: SOM Center to Euclid Avenue
24	Chagrin River Road Bikeway
21	Mill Creek Connector: North Warner Rd.

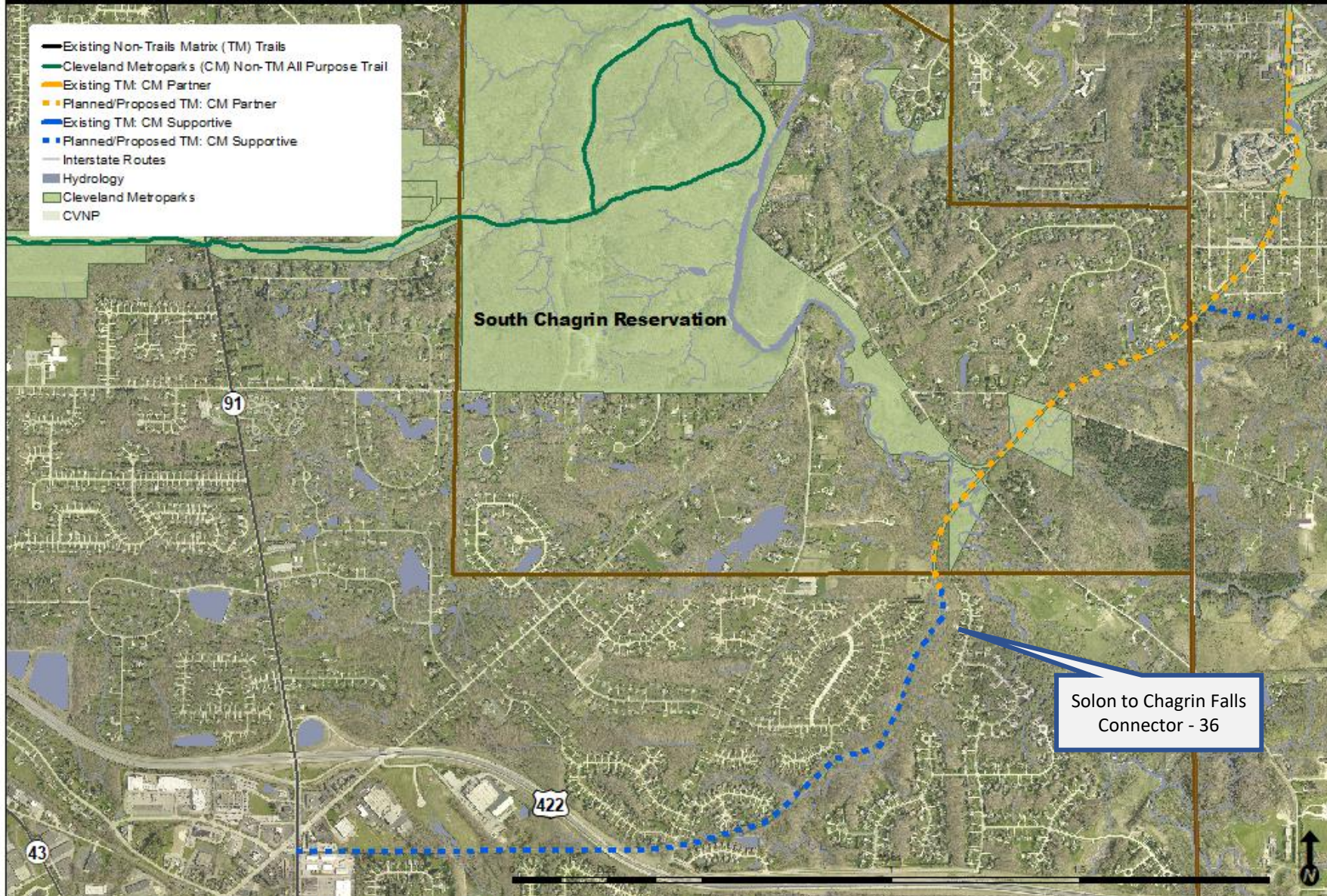
New Planned/Proposed Trails Matrix Trails - Round 5



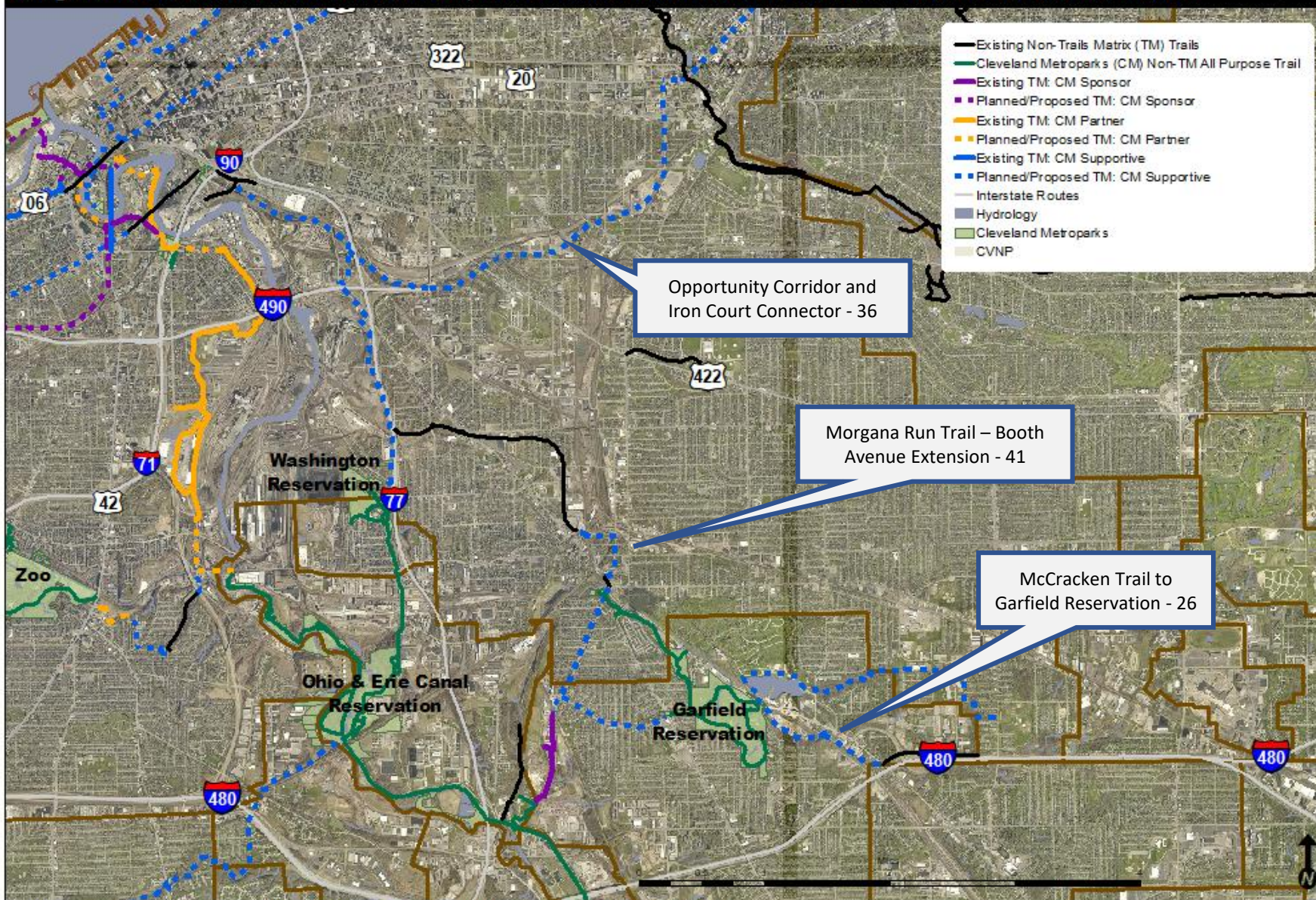
New Planned/Proposed Trails Matrix Trails - Round 5



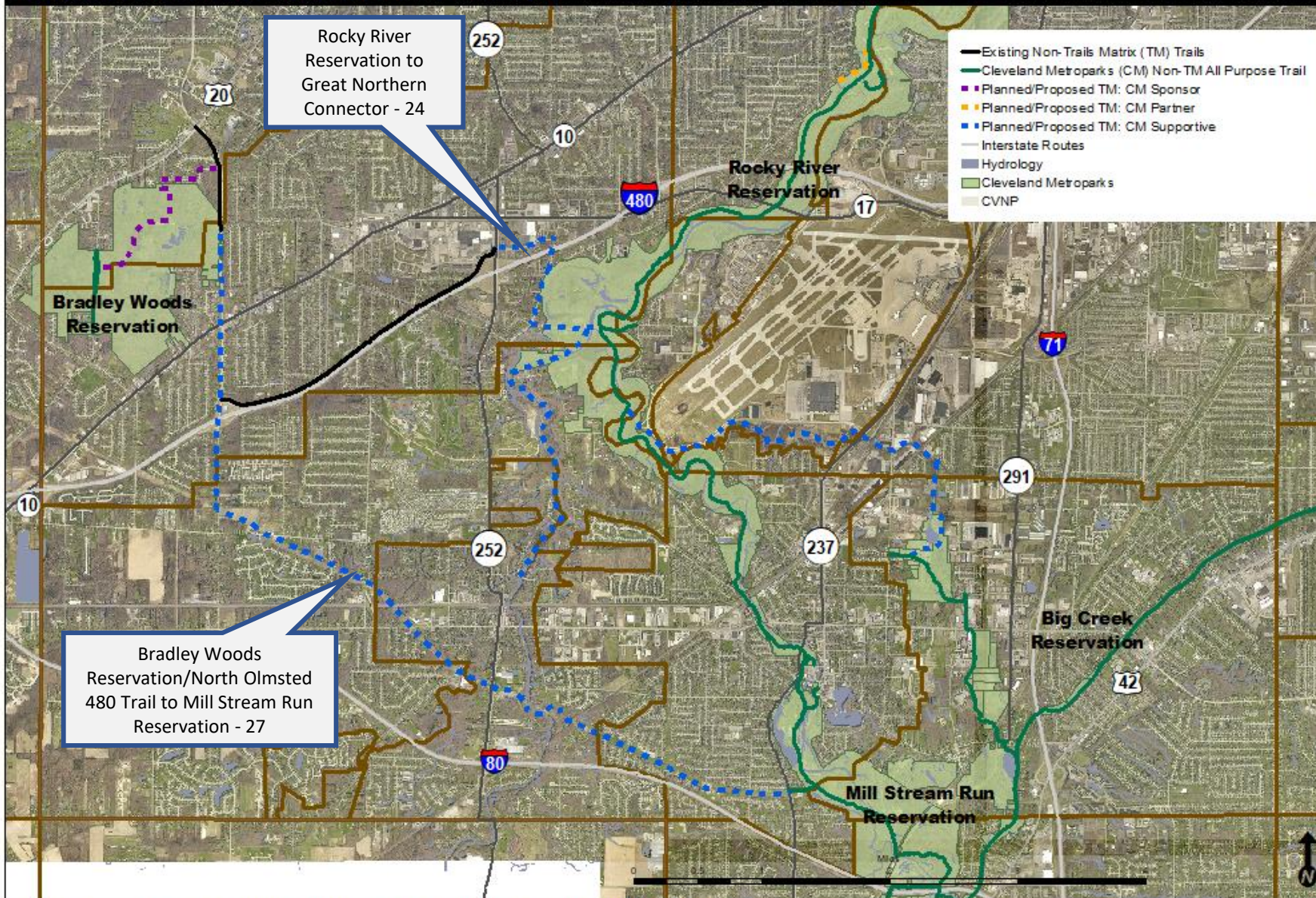
Existing and Planned/Proposed Trails Matrix Trails - Solon to Chagrin Falls Connector & Geauga Park District Connector



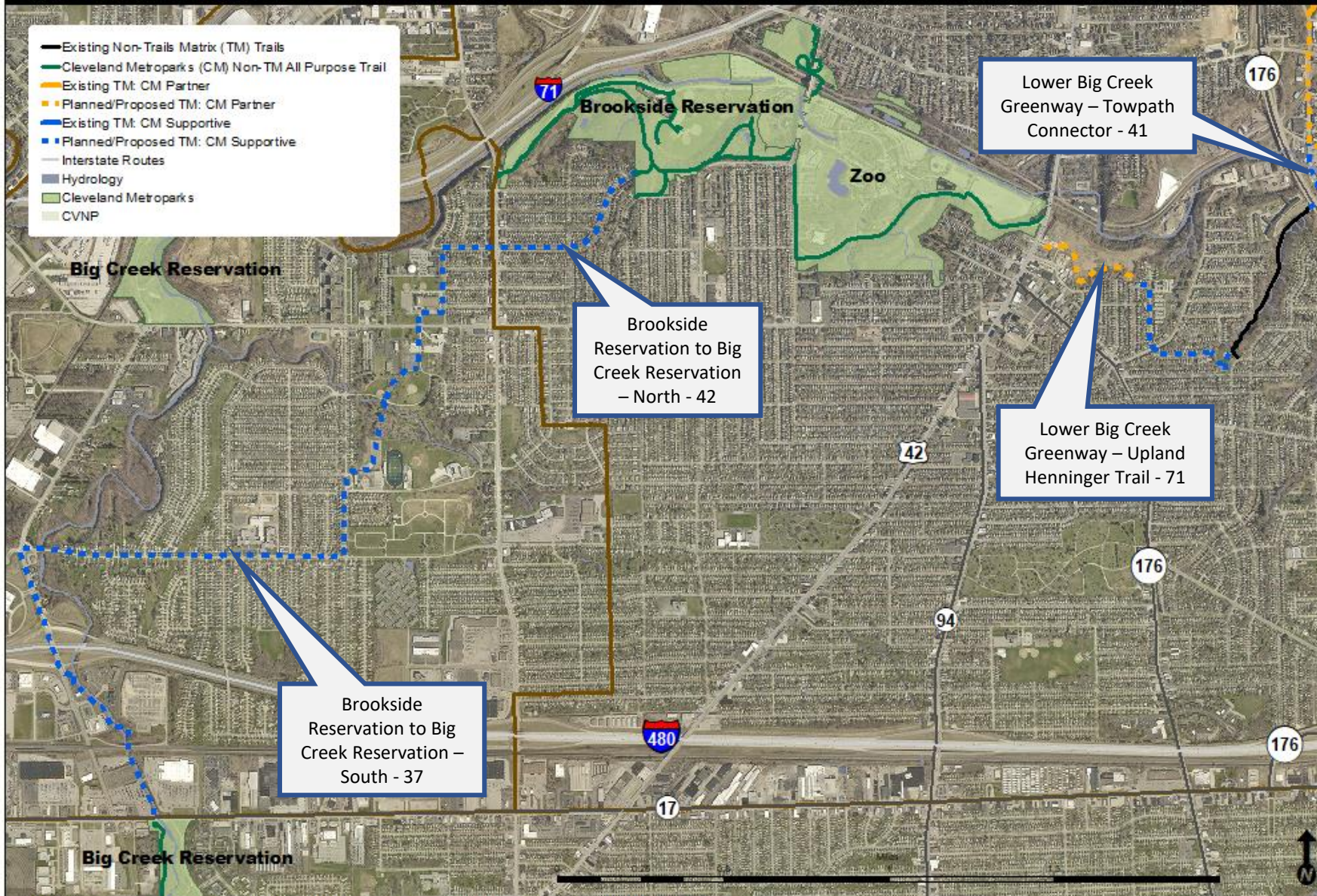
Existing and Planned/Proposed Trails Matrix Trails - Opportunity Corridor and Iron Court Connector, Morgana Run Trail Booth Avenue Extension, Mill Creek Connector North & McCracken Trail to Garfield Reservation



Existing and Planned/Proposed Trails Matrix Trails - Bradley Woods to Mill Stream Run Connector & Rocky River Reservation to Great Northern Connector



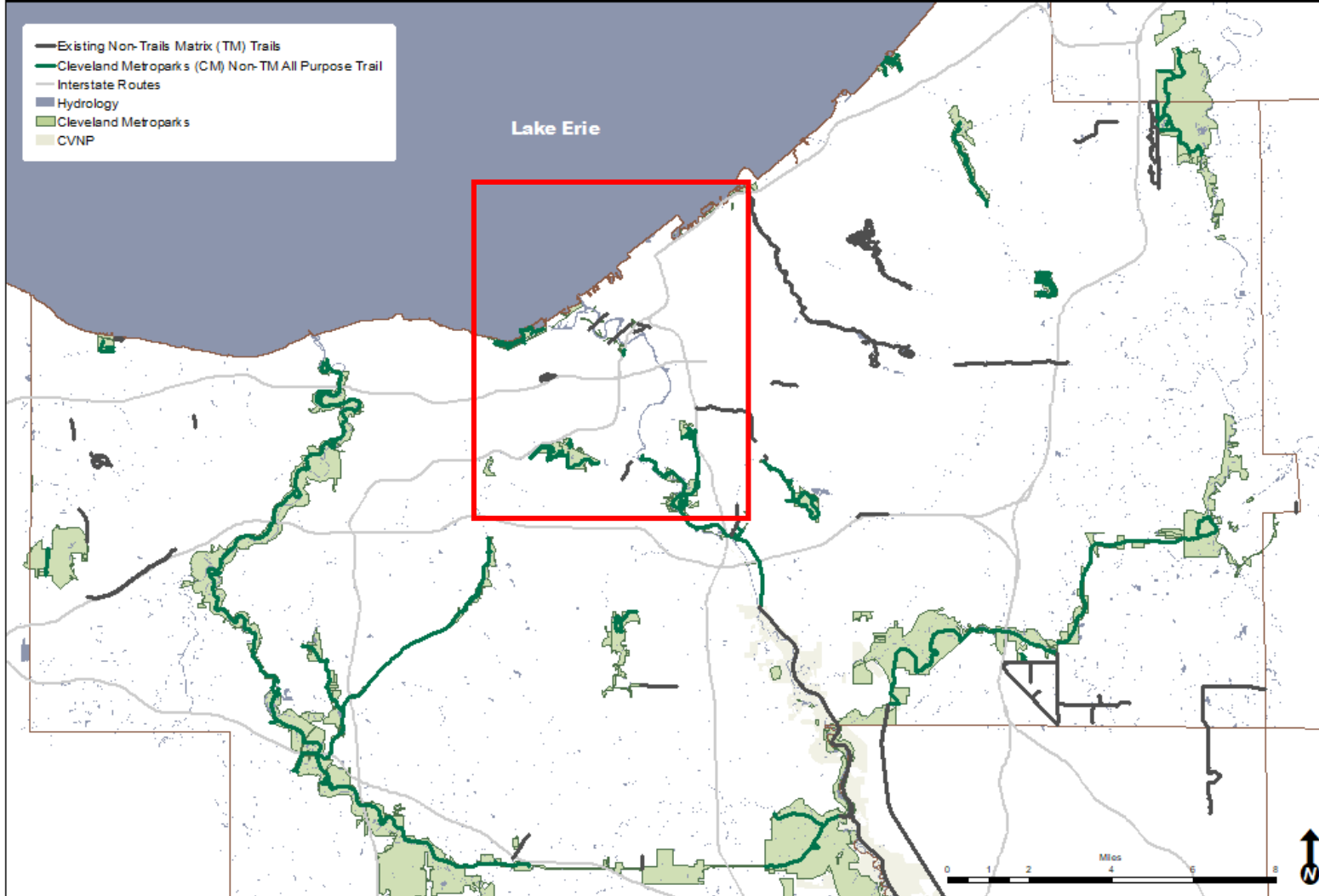
Existing and Planned/Proposed Trails Matrix Trails - Brookside to Big Creek Reservation, Lower Big Creek Greenway - Upland Trail & Towpath Connector



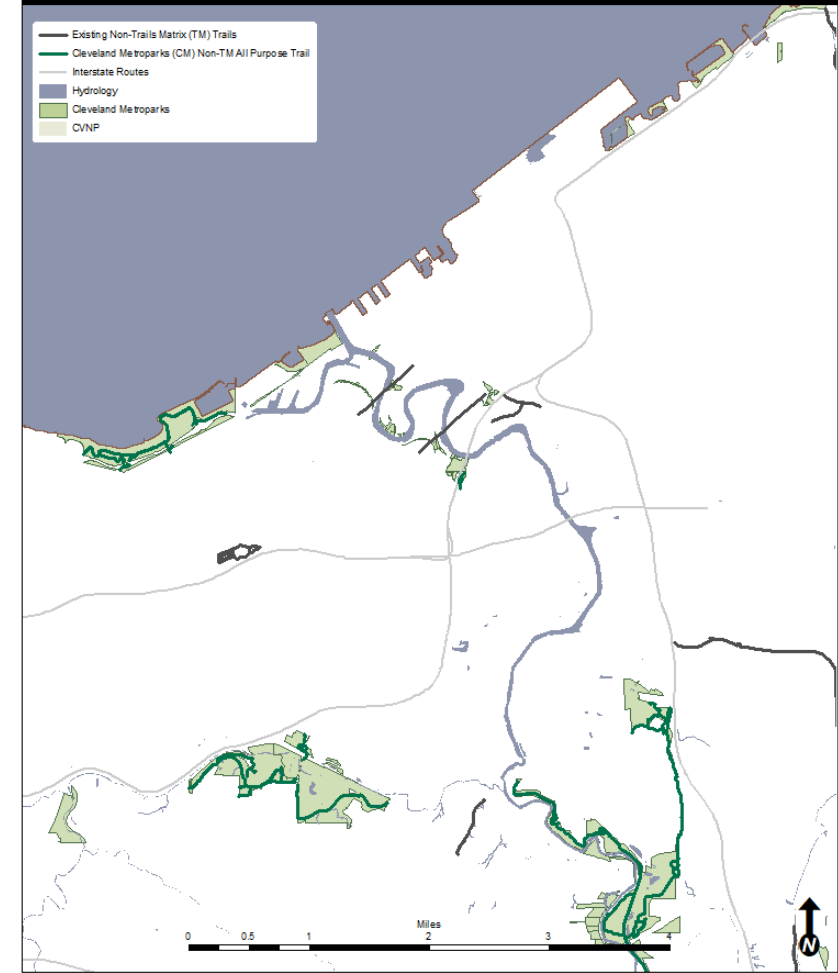
Existing and Planned/Proposed Trails Matrix Trails - Lorain Avenue Cycle Track, W. 65th Street, Superior Midway & Opportunity Corridor and Iron Court Connector



Existing Non-Trails Matrix Trails

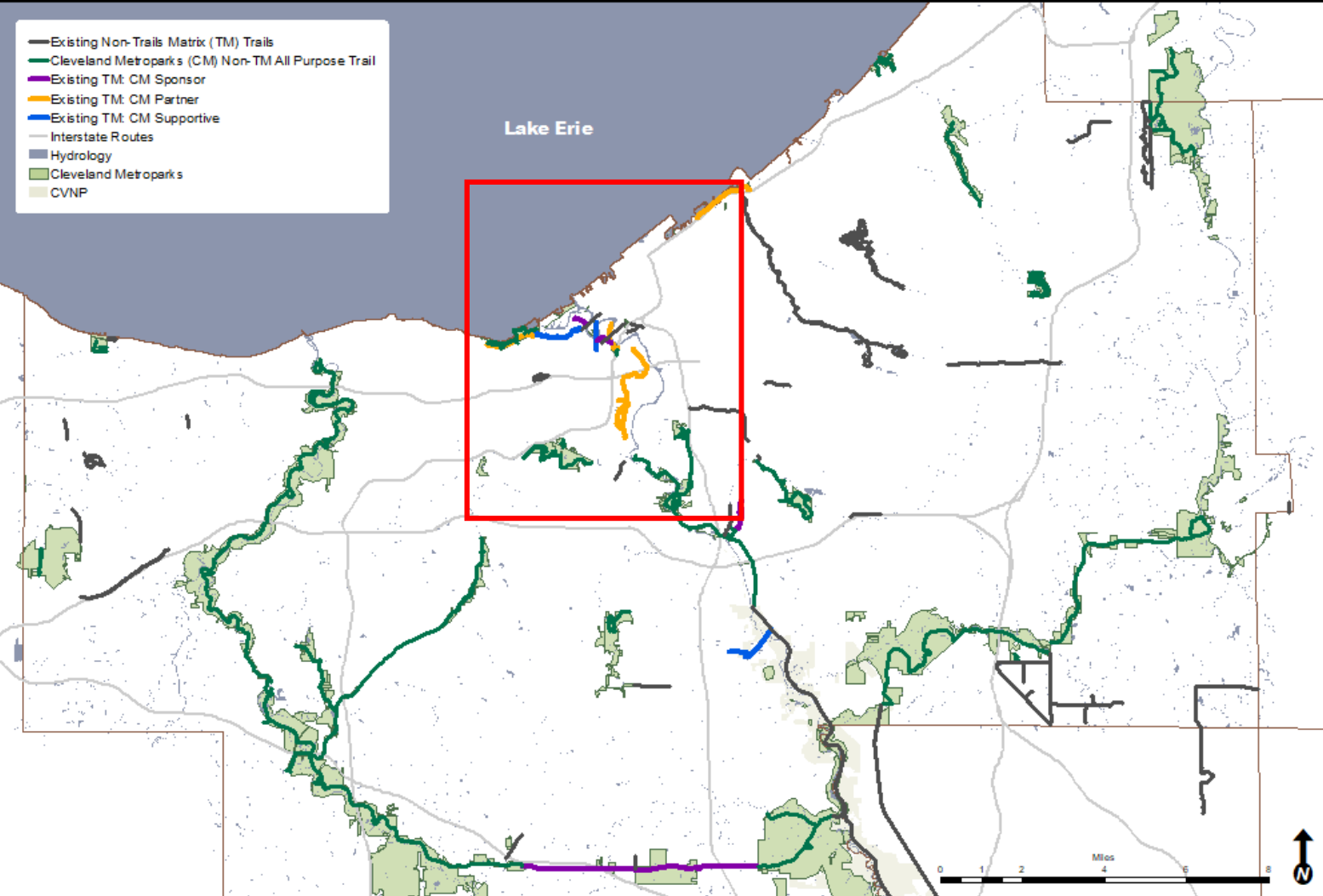


Trails Matrix - Round 5 Existing Non-Trails Matrix Trails

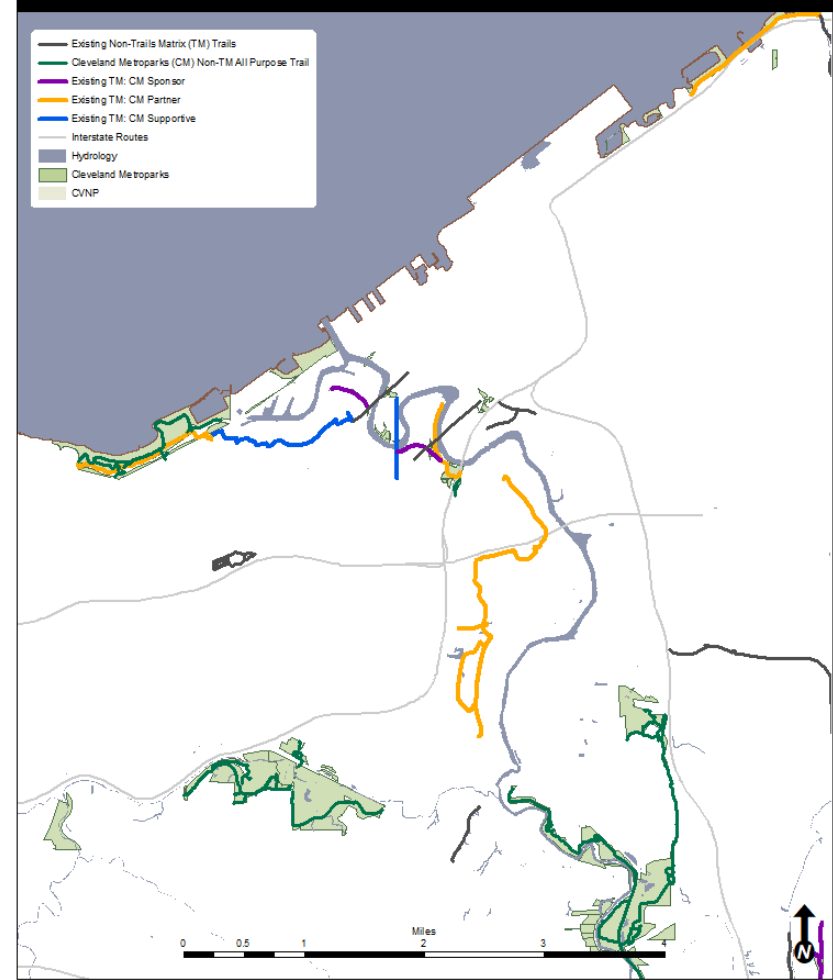


G:\PDNR\Planning\Research Projects\Trails Matrix\Trails Matrix Round 5\mapping\TM5 All Existing Trails Inset.mxd | Map Made: June 10, 2019

Existing Trails Matrix Trails

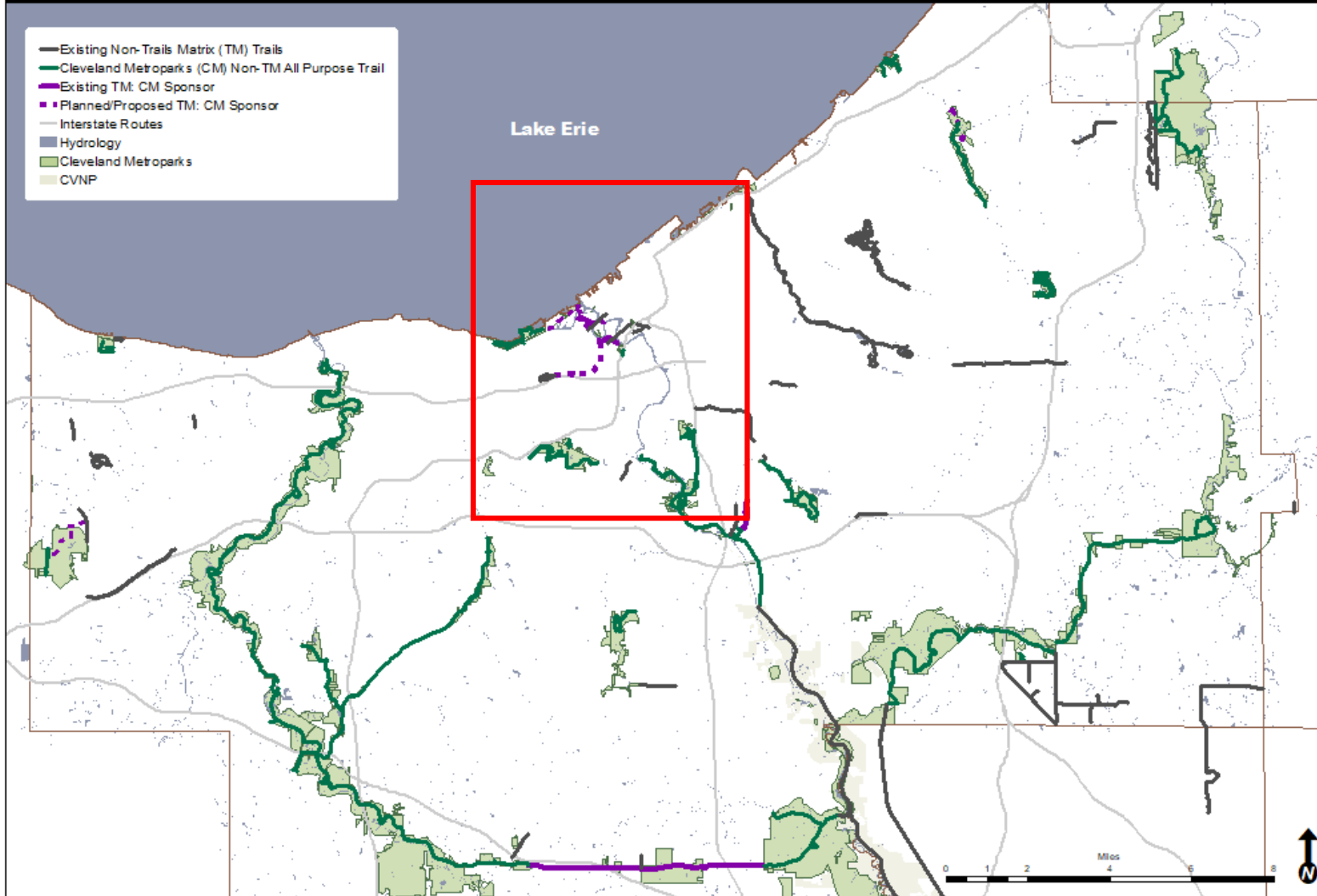


Trails Matrix - Round 5 Existing Trails Matrix Trails

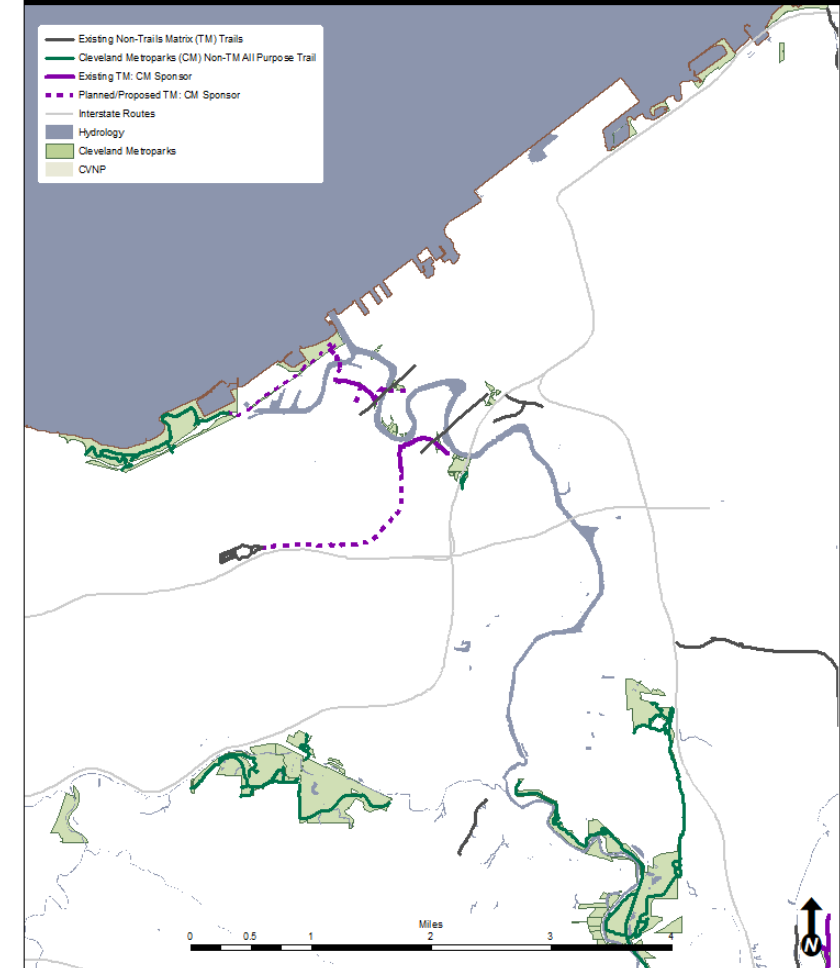


G:\PDNR\Planning\Research Projects\Trails Matrix\Trails Matrix Round 5\mapping\TM5 All Existing Trails Inset.mxd | Map Made: June 10, 2019

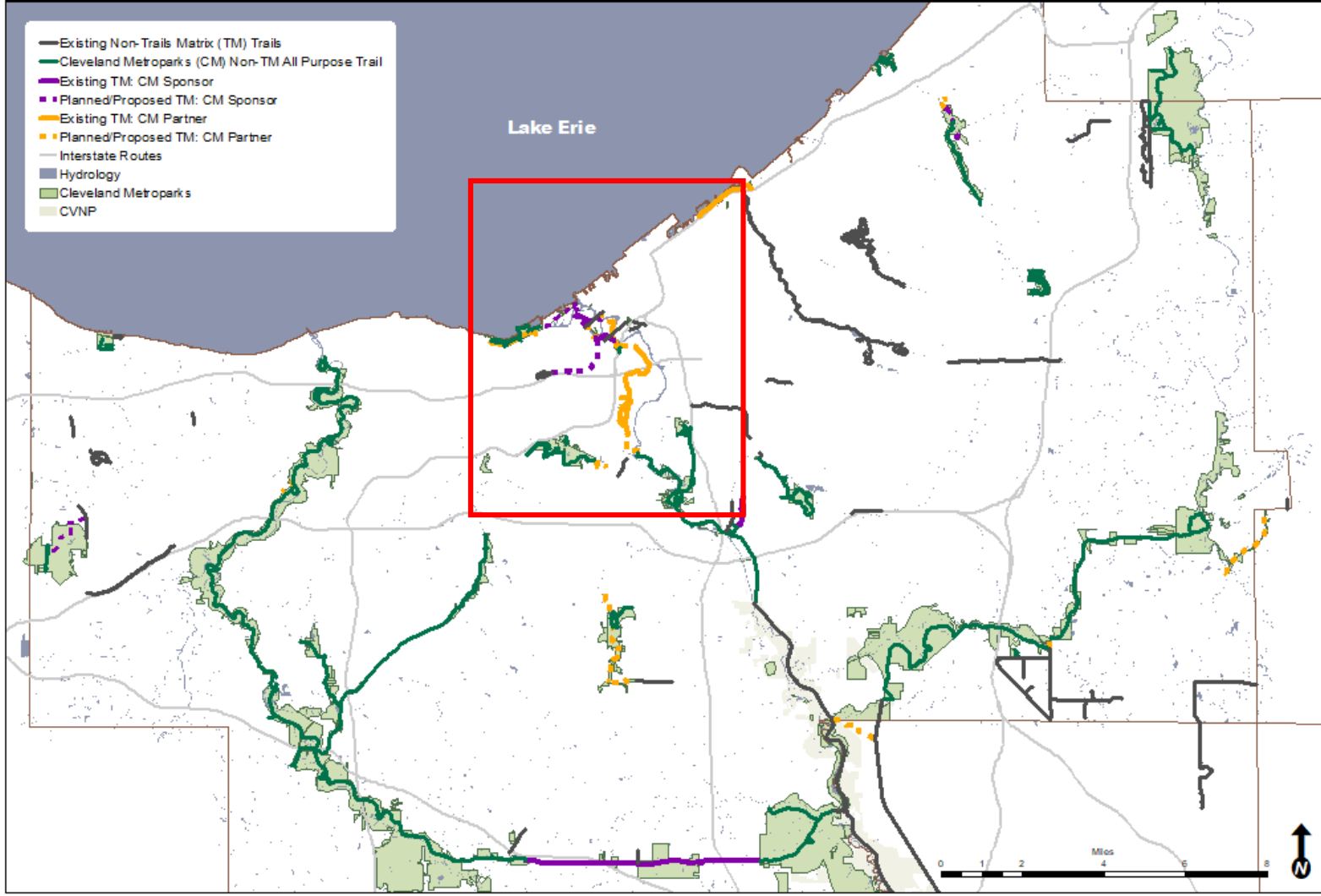
Existing and Planned/Proposed Trails Matrix Trails - Cleveland Metroparks Sponsor



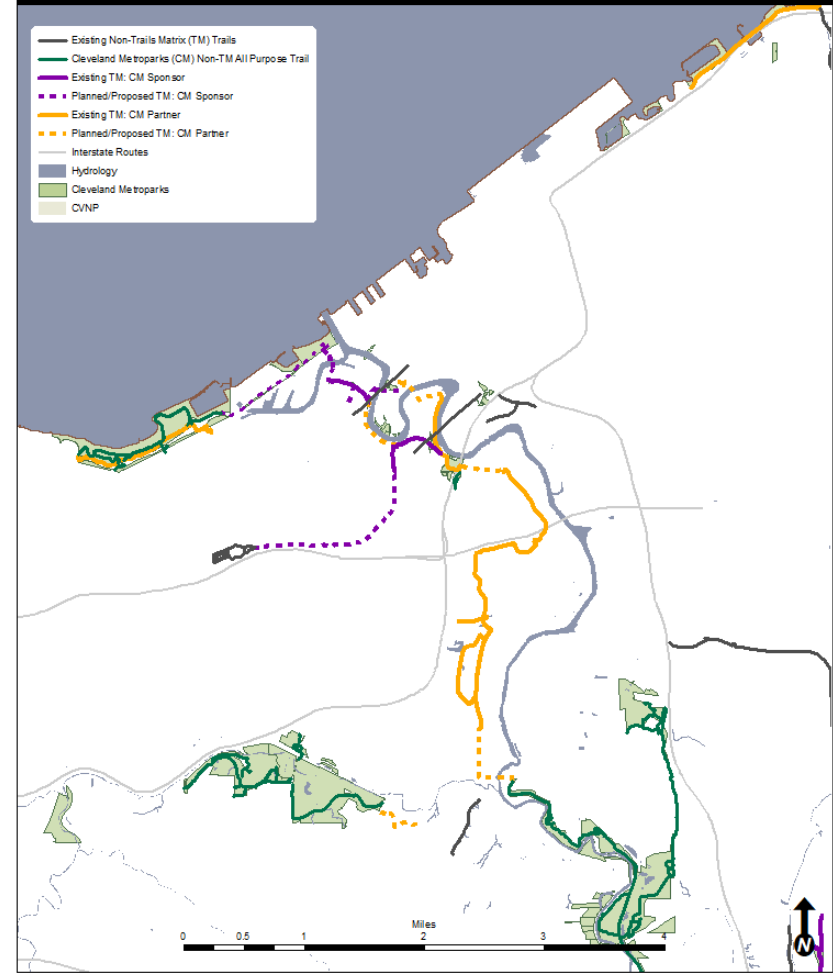
Existing and Planned/Proposed Trails Matrix Trails - Cleveland Metroparks Sponsor



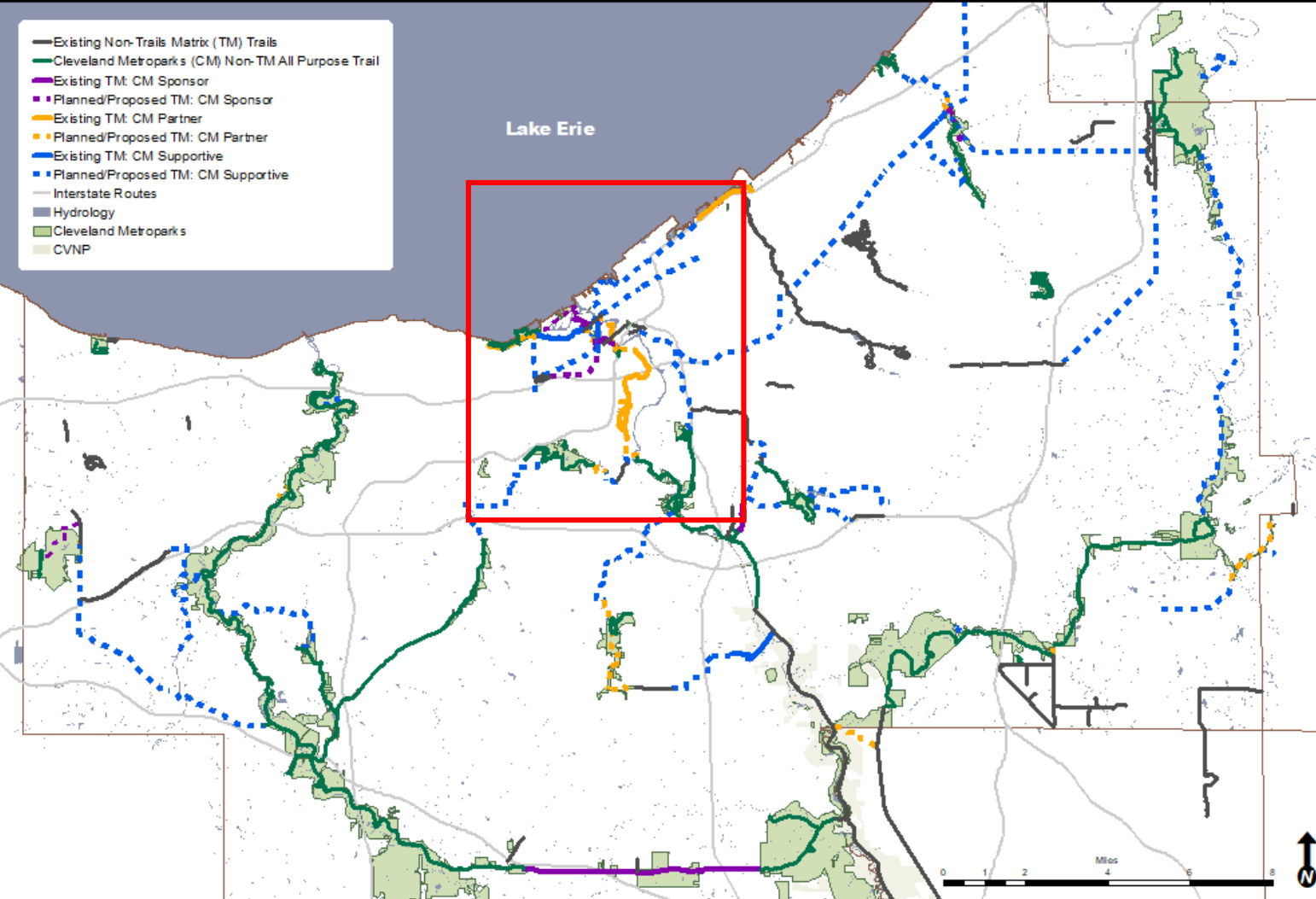
Existing and Planned/Proposed Trails Matrix Trails - Cleveland Metroparks Sponsor or Partner



Existing and Planned/Proposed Trails Matrix Trails - Cleveland Metroparks Sponsor or Partner



Existing and Planned/Proposed Trails Matrix Trails - Cleveland Metroparks Sponsor, Partner, or Supportive



Existing and Planned/Proposed Trails Matrix Trails - Cleveland Metroparks Sponsor, Partner, or Supportive

