

A scenic view of a forest stream with large rocks and trees, some with autumn foliage. The stream flows through a dense forest, with large, smooth rocks scattered throughout. The trees are a mix of deciduous and coniferous species, with some leaves showing signs of autumn. The lighting is soft, suggesting a slightly overcast day or a shaded forest.

# 2016 Reservation Plan Updates

Presentation of Draft Plans to the  
Board of Park Commissioners

August 18, 2016

# Process and Schedule

- Internal Kickoff – January
- Concept 1 Review – March
- Concept 2 Review – May
- Chief’s Meeting – July 19<sup>th</sup>
- Board Meeting – August 18<sup>th</sup>
- Visits with External Stakeholders
- Public Open Houses – September
  - 6:00 -7:30 PM each night
  - Tues. 13<sup>th</sup> - Brecksville / Sleepy Hollow
  - Weds. 14<sup>th</sup> - Hinckley / Red Wing
  - Tues. 20<sup>th</sup> - West Creek / Confluence Room
  - Weds. 21<sup>st</sup> - Bedford / Shawnee Hills
- Evaluate Input /Final Concept- Oct.
- Draft Final Plans / Board – Nov./Dec.
- Final Plan Production – Dec./Jan.



PROTECTION



RELEVANCY



CONNECTIONS



COME OUT AND PLAY



ORGANIZATIONAL  
SUSTAINABILITY



## Reservation Plan Framework

Vision

Overarching Big Idea



Guiding Principles

Long Term Concepts

*Tied to Strategic Goals*



Actions

Specific Park Features, Programming, and  
Management Activities

*Track with Strategic Goals*

Improve Connections Between Bedford and South Chagrin along Richmond Road

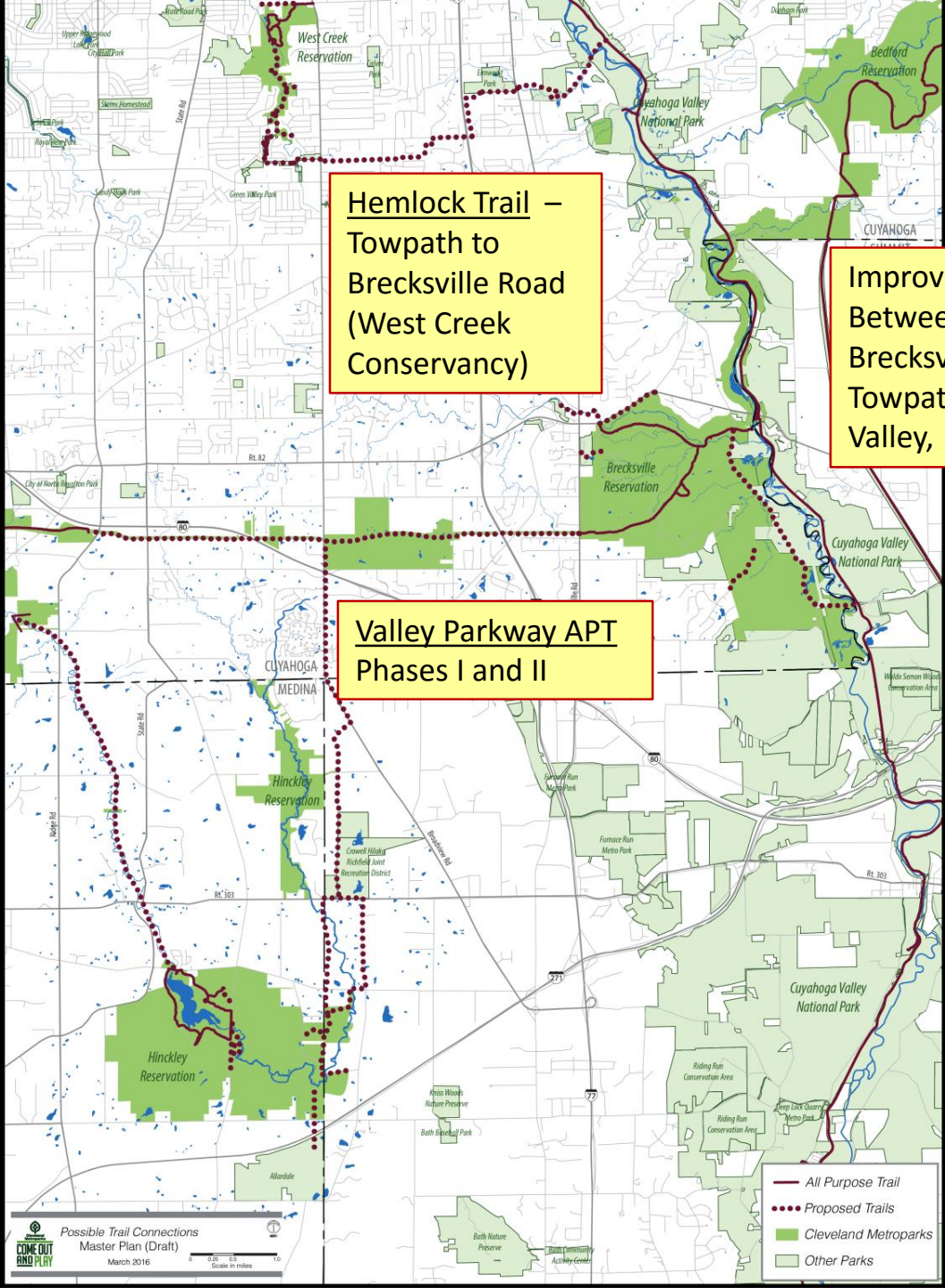
**Hemlock Trail –  
Towpath to  
Brecksville Road  
(West Creek  
Conservancy)**

Improve Connections Between Bedford and Brecksville as well as Towpath and Cuyahoga Valley,

**Valley Parkway APT  
Phases I and II**



Advance trails that connect parks to neighborhoods and to local, state, and regional networks



- All Purpose Trail
- Proposed Trails
- Cleveland Metroparks
- Other Parks

**Willis Picnic Area**

- Partner with the City of Bedford to reduce environmental impacts from ballfield management
- Discourage bootleg trails by providing a sanctioned trail

**Viaduct Park**

- Improve connections to downtown Bedford with improved wayfinding and signage
- Work with Bedford as they pursue trails, including a potential bridge to the Parkway
- Improve wayfinding at Broadway and better approach / entry to park
- Improve bridge trail condition along Egbert Road to Union Street

**271 Corridor**

- Consider protection of additional property along west side of 271 along Bear Creek
- Investigate funding for mitigation of stormwater impacts from 271

**Hawthorn Parkway**

- Provide all purpose trail connection and improved wayfinding to/ from South Chagrin Reservation along Richmond Road
- Protect sensitive vernal pools north of bridge trail near Tinker's Creek
- Consider opportunities to improve habitat value at nearby landfills through changes to vegetation and mowing practices
- Plan for future connections to north and southeast

City of Bedford – Connection at Viaduct Park

APT / Parkway Connection along Richmond Road

**Former Field Office**

- Due to existing utilities connections, consider using former field office site for new flush restrooms and Bike Hub / meeting point for trail users and programs. Bike wash could be located here as well.

**Proposed Glen Willow Trail**

- Support the City of Glen Willow's future trail link

**Forbes Woods**

- Complete new trail / boardwalk and picnic area changes at Forbes Woods

	All Purpose Trail		Water
	Other Trails		Wetlands
	Proposed Trails		Other Parks
	City of Bedford All Purpose Trail		
	Land Protection		
	Possible Improvement Site		



**North Side - Button Road**

- Huge corridors to north / northeast – opportunities for land protection
- Future trail connection at Lee Road
- Remedy erosion issues
- Enforce regulations re. Hutchinson Field dumping
- Meadows Area (Circle Emerald?) habitat restoration? Trailhead? Expand sanctioned trails and connect to Hemlock

**Tinker's Creek**

- Consider in stream mitigation to address stream bank erosion and stabilization

**Resource Protection and Trail Connections to North**

**Egbert Picnic Area**

- Stunning valley – one way trail spur is disappointing; opportunity to supplement?
- Facility evaluation?
- Fitness equipment

**Hemlock Creek Picnic Area**

- Add stepping stones in creek for pedestrians near bridle trail crossing

**Maintenance Complex**

- Add some plantings
- Salt shed needed

**Astorhurst Picnic Area and Trail Connection**

**Lost Meadows Reserve Shelter**

**APT Connection**

**Shawnee Hills Golf Course and South of Parkway**

- Discuss greening opportunities with golf course staff
- Add cross country ski rentals
- Explore land protection opportunities to mitigate stormwater impacts

**Lost Meadows Reserve Area**

- Occupancy? Open for public use? Add permanent shelter or 4-season facility (River Grove)? Good central trailhead but may be too isolated

**Scenic Overlook**

- Other amenities / trail links?

**Bridal Veil Falls**

- Accessibility improvements?

**Hermit's Hollow**

- Recent renovation – good shape

	All Purpose Trail		Water
	Other Trails		Wetlands
	Proposed Trails		Other Parks
	Land Protection		

Hemlock Trail  
Phase I (to  
West Creek)

**Proposed Hemlock Trail**  
• Support West Creek Conservancy's future trail link to West Creek Reservation

**Recreation Center - CVSR**  
• Programs with CVNP events  
• Explore opportunities to build synergy between parks, trails, and passenger railroad

Parkway Route  
and Trail  
Connection

Sagamore  
Road Trail  
Connection

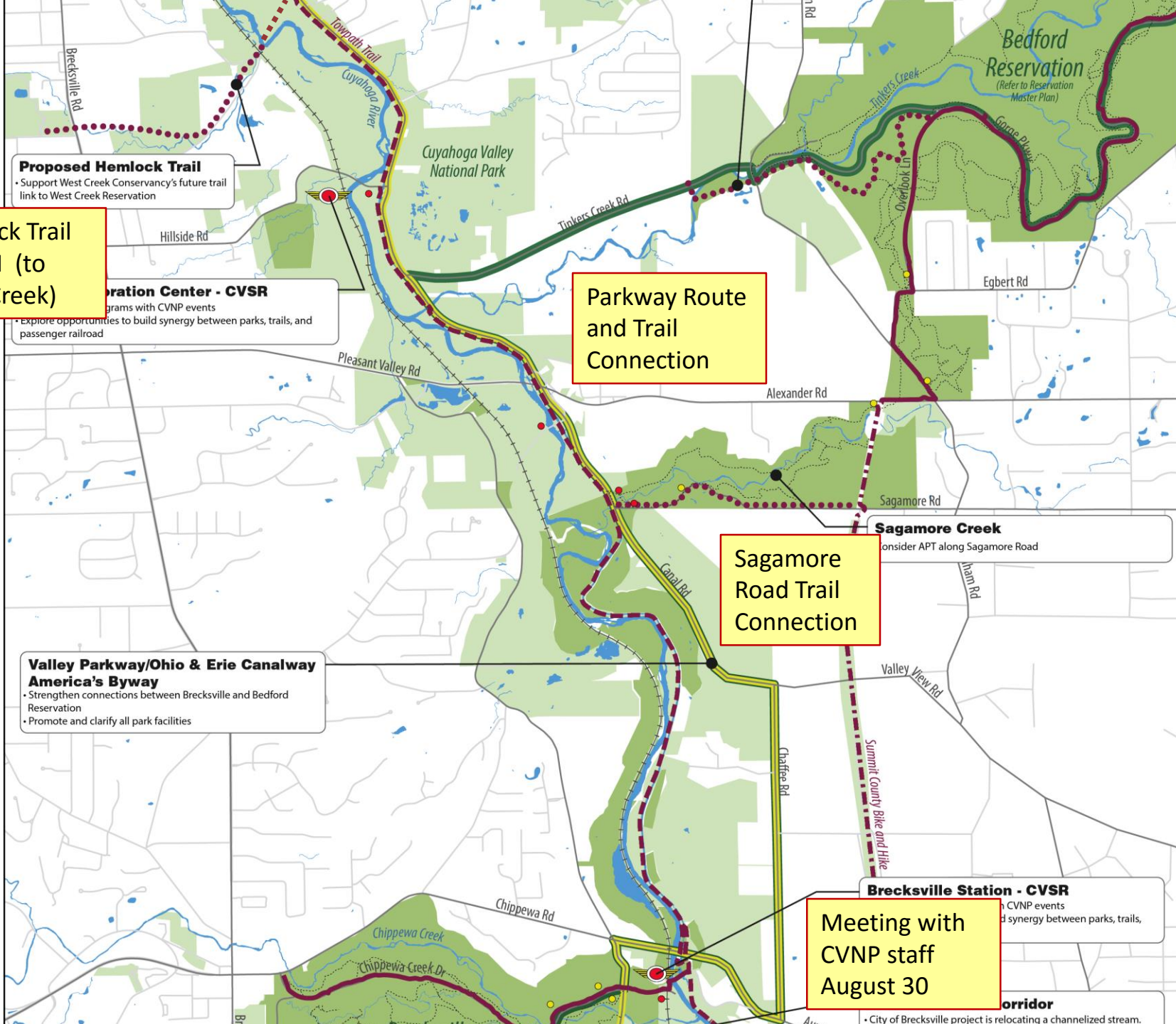
**Valley Parkway/Ohio & Erie Canalway  
America's Byway**  
• Strengthen connections between Brecksville and Bedford Reservation  
• Promote and clarify all park facilities

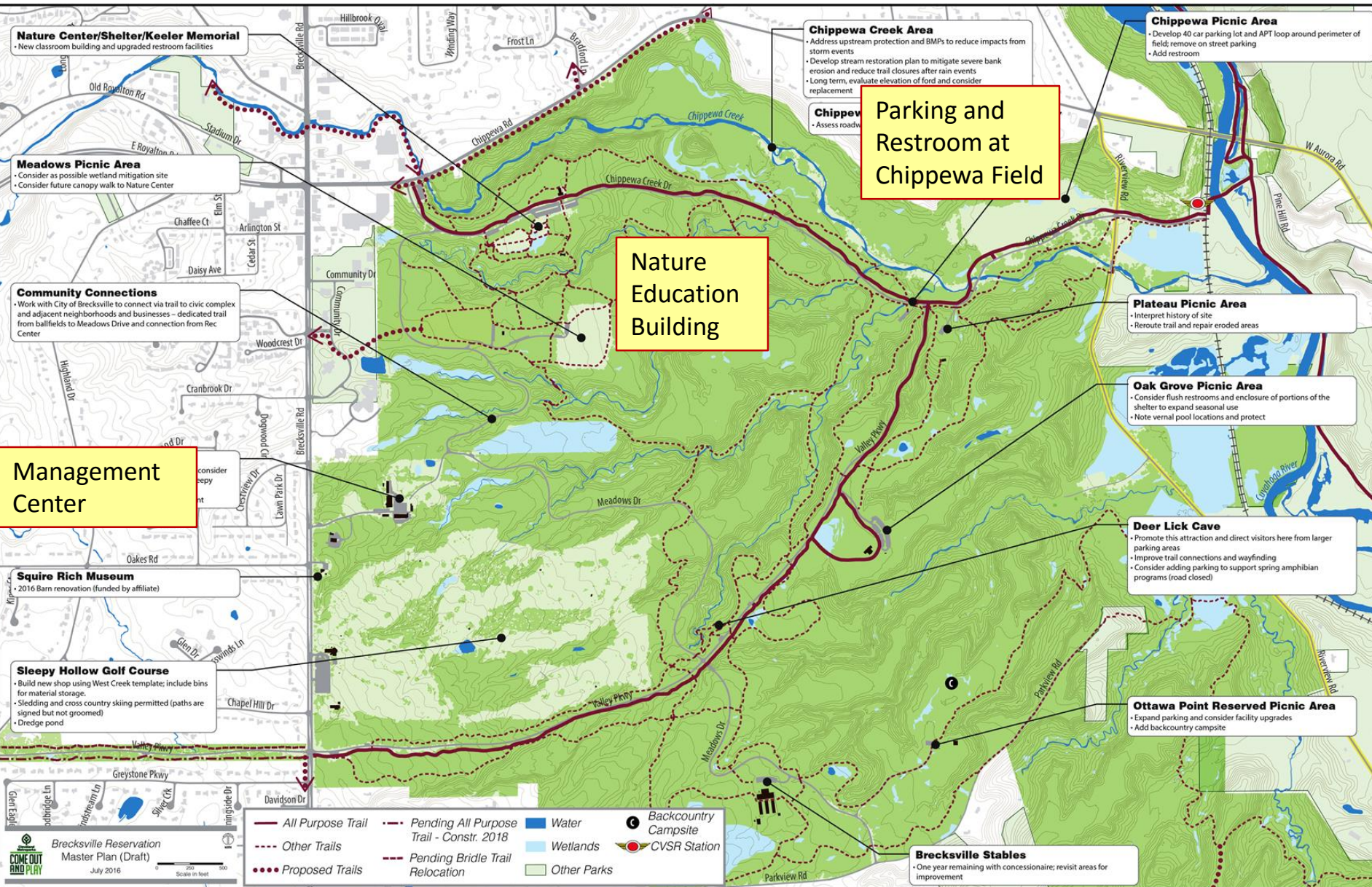
**Sagamore Creek**  
• Consider APT along Sagamore Road

**Brecksville Station - CVSR**  
• CVNP events  
• Synergy between parks, trails,

Meeting with  
CVNP staff  
August 30

**Corridor**  
• City of Brecksville project is relocating a channelized stream.





**Nature Center/Shelter/Keeler Memorial**  
 • New classroom building and upgraded restroom facilities

**Meadows Picnic Area**  
 • Consider as possible wetland mitigation site  
 • Consider future canopy walk to Nature Center

**Community Connections**  
 • Work with City of Breckville to connect via trail to civic complex and adjacent neighborhoods and businesses – dedicated trail from ballfields to Meadows Drive and connection from Rec Center

**Management Center**

**Squire Rich Museum**  
 • 2016 Barn renovation (funded by affiliate)

**Sleepy Hollow Golf Course**  
 • Build new shop using West Creek template; include bins for material storage  
 • Sledding and cross-country skiing permitted (paths are signed but not groomed)  
 • Dredge pond

**Chippewa Creek Area**  
 • Address upstream protection and BMPs to reduce impacts from storm events  
 • Develop stream restoration plan to mitigate severe bank erosion and reduce trail closures after rain events  
 • Long term, evaluate elevation of ford and consider replacement

**Chippewa**  
 • Assess roadway

**Parking and Restroom at Chippewa Field**

**Nature Education Building**

**Chippewa Picnic Area**  
 • Develop 40 car parking lot and APT loop around perimeter of field; remove on street parking  
 • Add restroom

**Plateau Picnic Area**  
 • Interpret history of site  
 • Reroute trail and repair eroded areas

**Oak Grove Picnic Area**  
 • Consider flush restrooms and enclosure of portions of the shelter to expand seasonal use  
 • Note vernal pool locations and protect

**Deer Lick Cave**  
 • Promote this attraction and direct visitors here from larger parking areas  
 • Improve trail connections and wayfinding  
 • Consider adding parking to support spring amphibian programs (road closed)

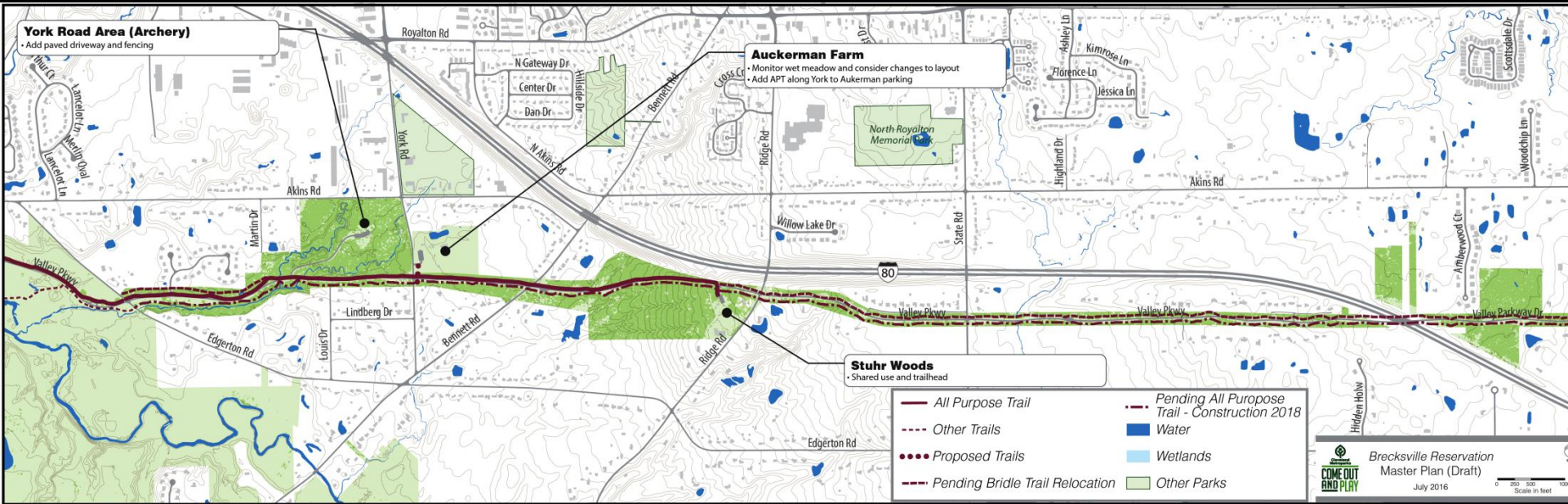
**Ottawa Point Reserved Picnic Area**  
 • Expand parking and consider facility upgrades  
 • Add backcountry campsite

**Breckville Stables**  
 • One year remaining with concessionaire; revisit areas for improvement

**Breckville Reservation Master Plan (Draft)**  
 July 2016  
 Scale in feet

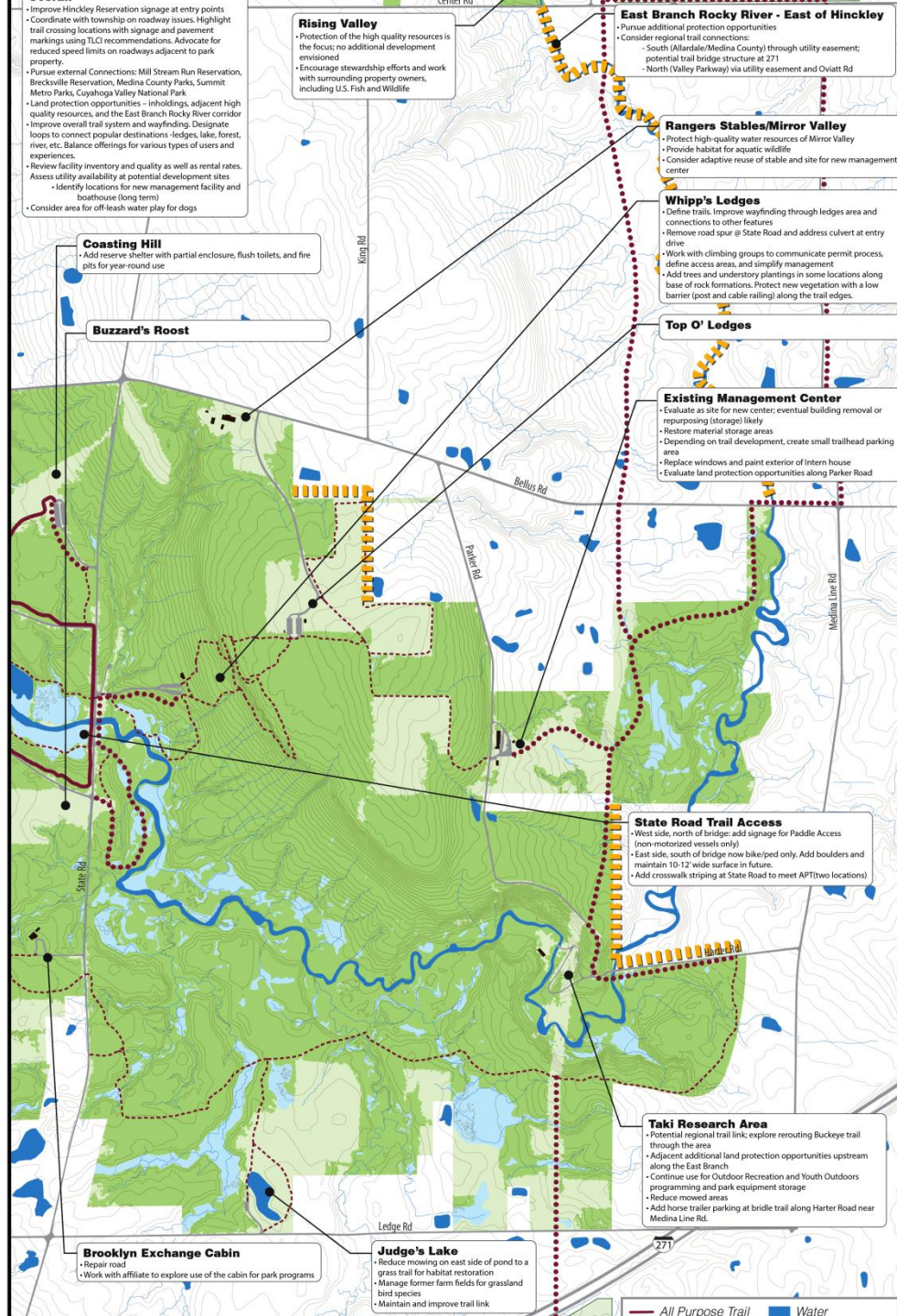
- All Purpose Trail
- - - Pending All Purpose Trail - Constr. 2018
- - - Other Trails
- Proposed Trails
- Water
- Wetlands
- Other Parks
- Backcountry Campsite
- CVSR Station



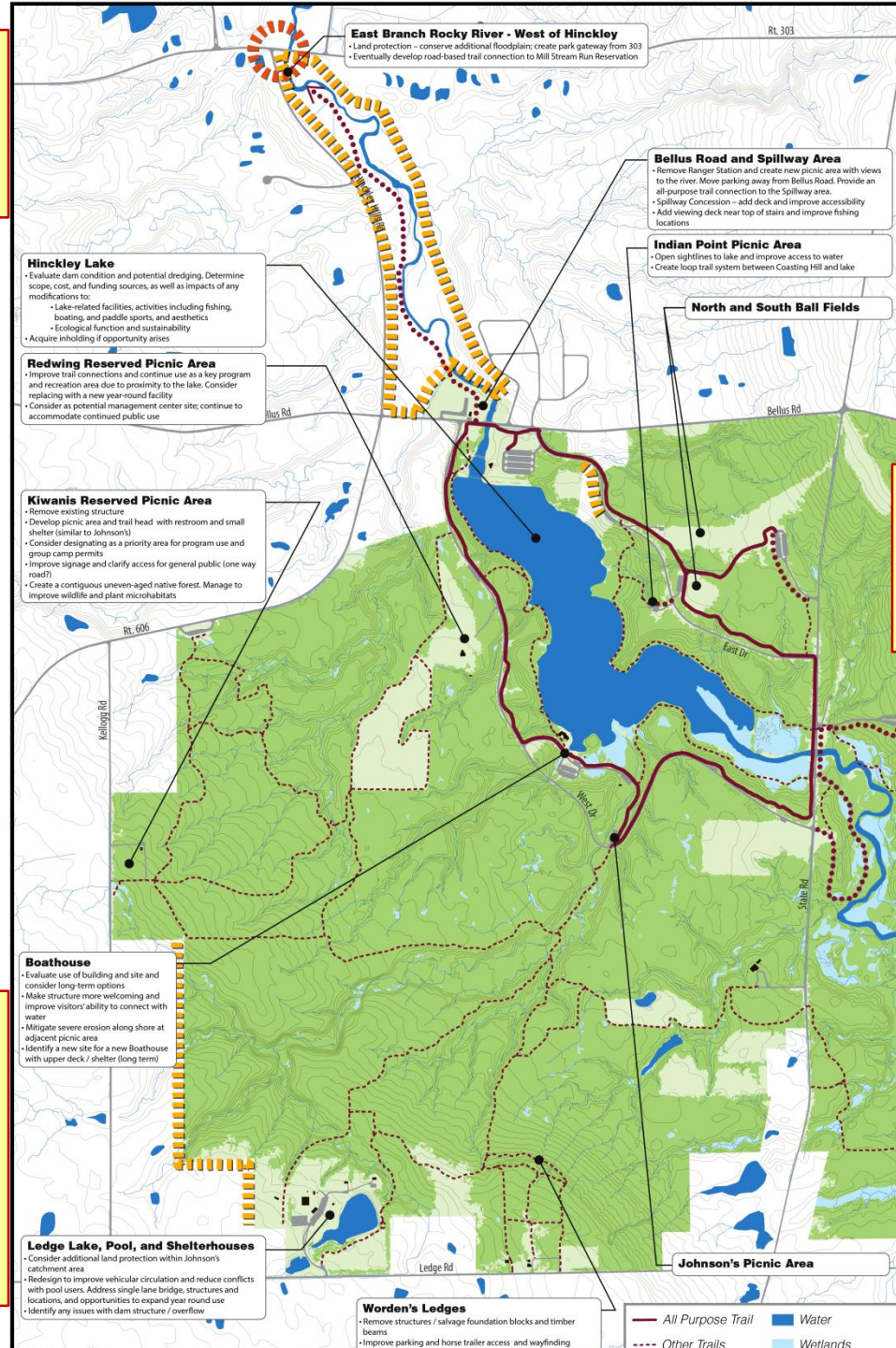


# Continue East Branch Rocky River Protection Efforts

Select Preferred Site for New Management Center



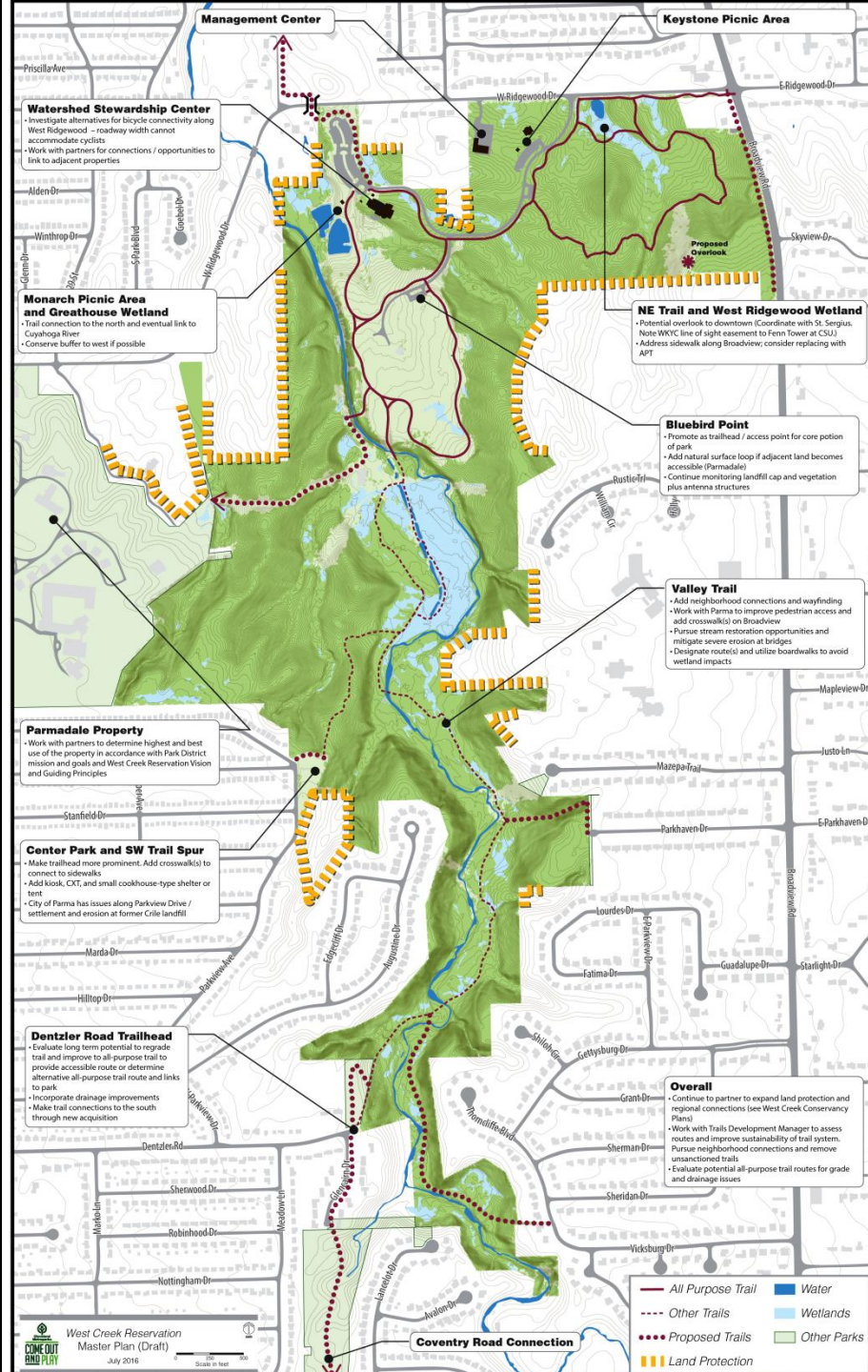
Consider Parkway and trail link from Center Road (303) to Bellus Road.



Determine Approach to Lake and Dam Issues

Improve Entry Drive and Circulation at Ledge Pool. Consider additional water feature.

Continue to work with West Creek Conservancy to expand protection and increase connections





Plans are available at:

<http://www.clevelandmetroparks.com/Main/MasterPlanning.aspx>

Questions?

Kelly Coffman [kbc@clevelandmetroparks.com](mailto:kbc@clevelandmetroparks.com)