



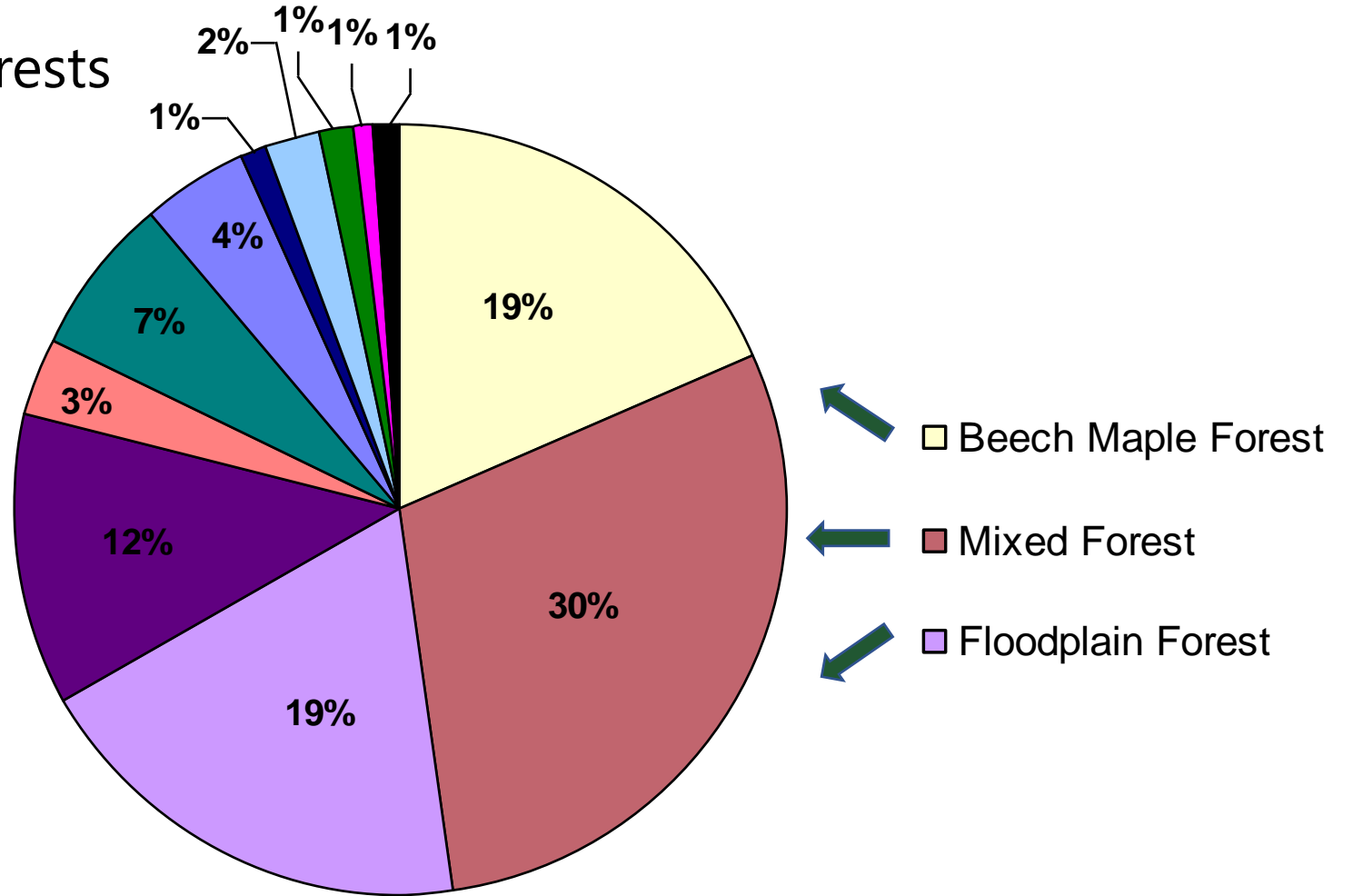
Summary of Deer Exclosures across Cleveland Metroparks

Jennifer Grieser
Director of Natural Resources



Forests

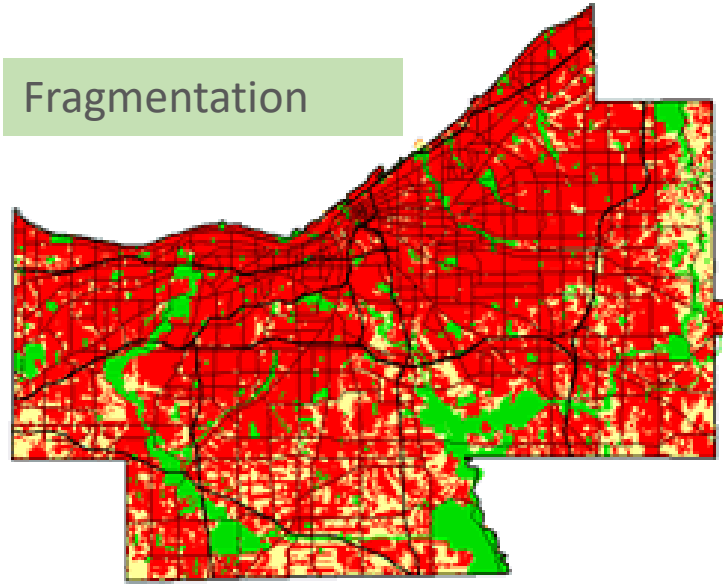
77% of our acreage covered by forests



Stressors



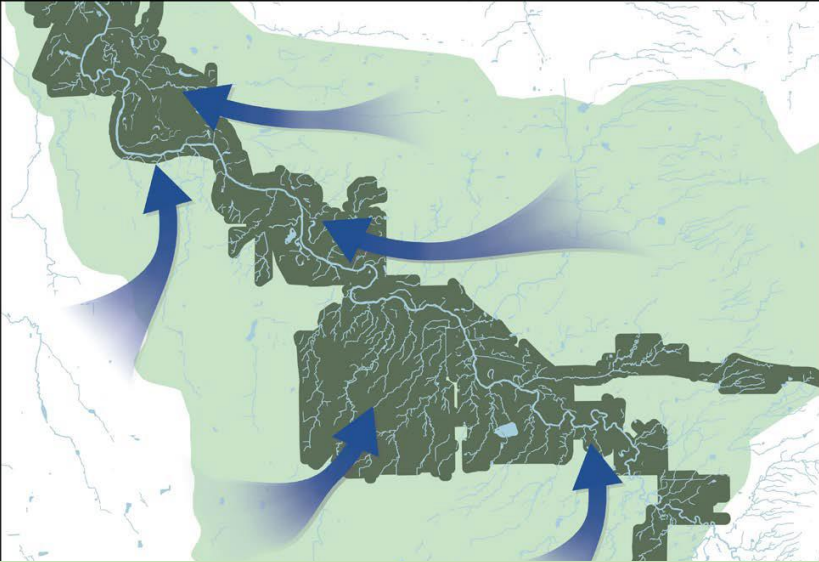
Invasive species



Fragmentation



Forest Pests & Pathogens



Stormwater

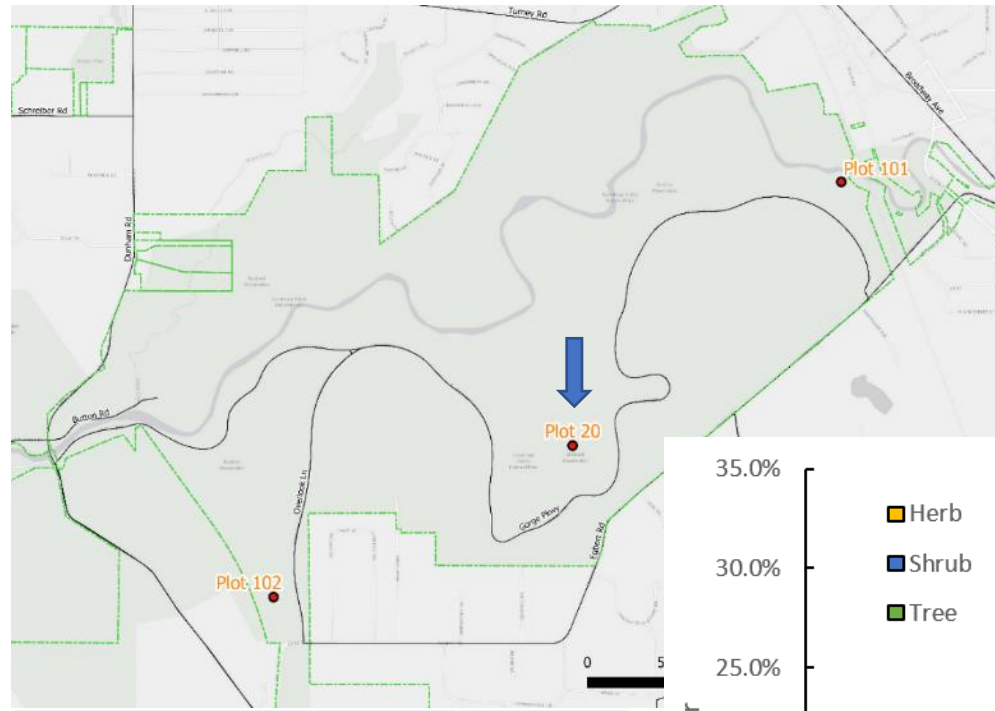


Urban wildlife

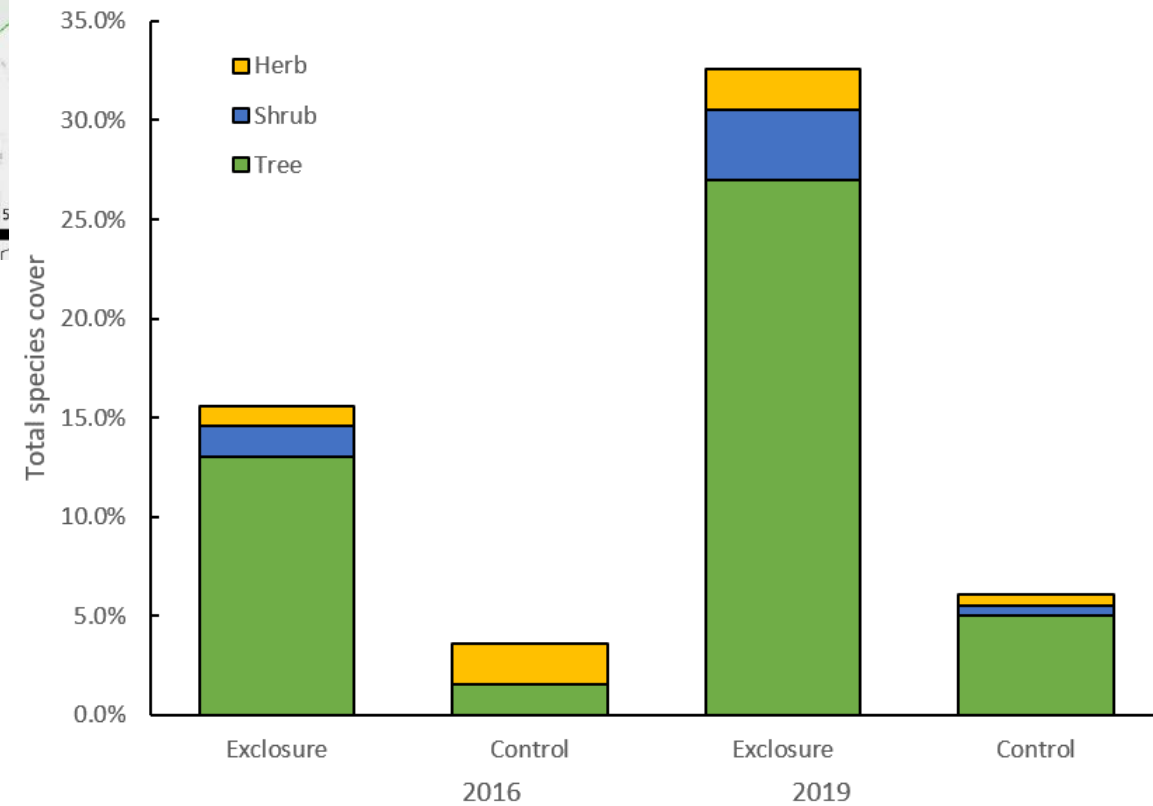
Fences to exclude deer...



Bedford



Woody Species	Control	Exclosure
Mapleleaf Viburnum	7	210
Ash	2	1
Beech	1	1
Black Cherry	6	
Greenbriar		3
Oak		2
Hop Hornbeam		1
Hawthorn		1



...to provide future nursery stock,



Millstream Run

August 2014



August 2015



2018



So we also fence to protect baby Yoda,



...to protect baby trees,



Acacia



Bedford - Astorhurst



...to protect reforestation plantings,

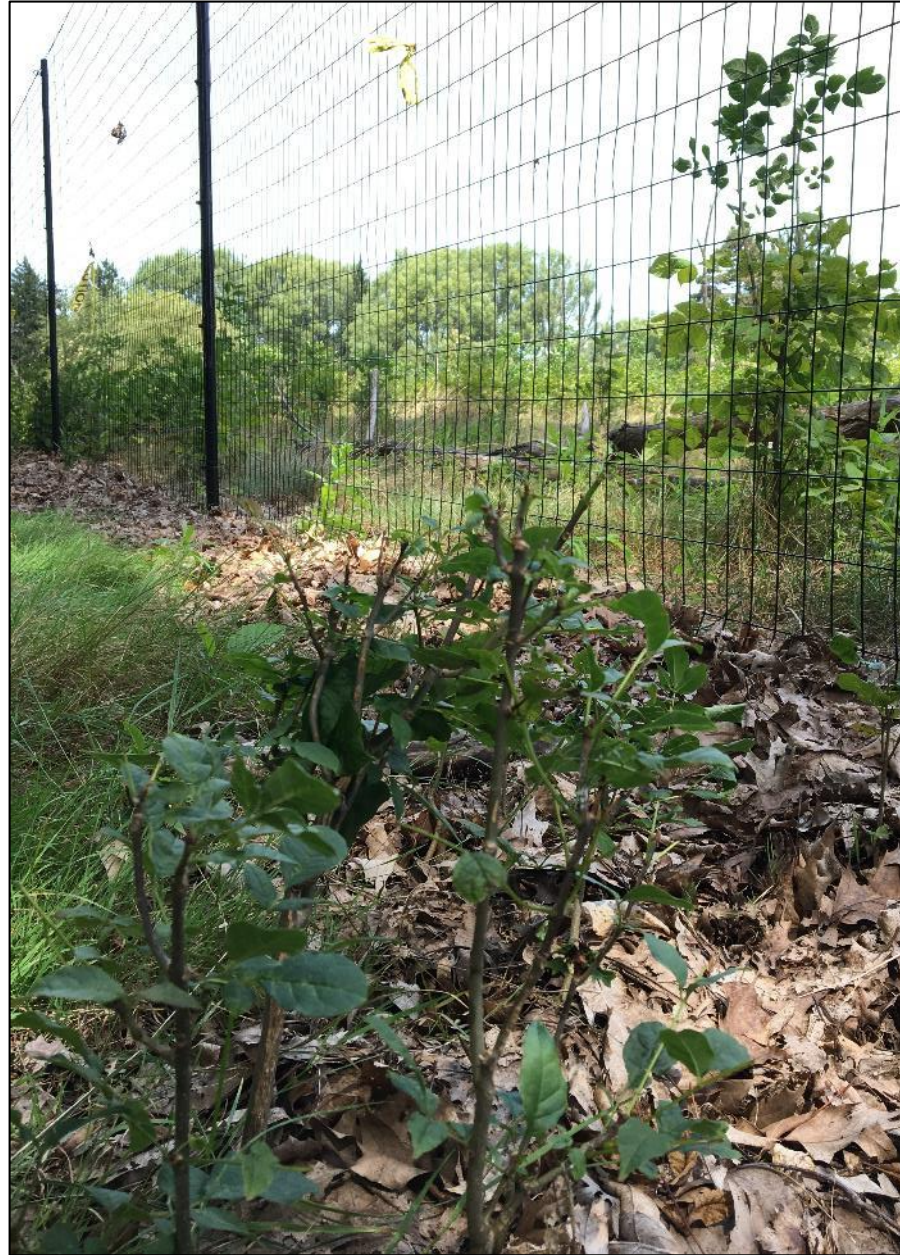


Big Creek – Snow Rd.



Bedford – Upper Dunham

...to protect restoration project investments,



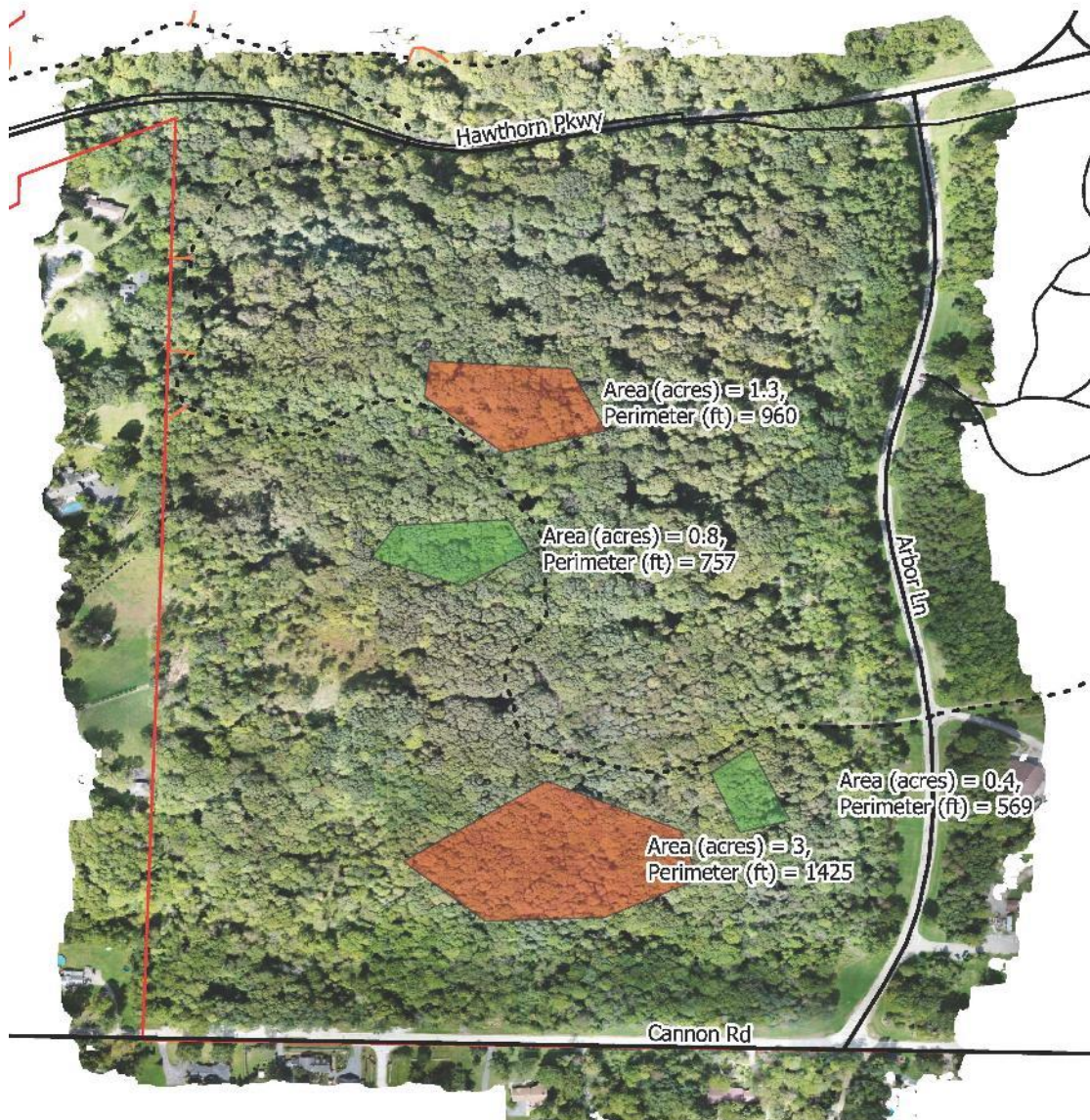
Acacia



South Chagrin – Sulphur Springs



...to promote forest resilience,



...to provide research opportunities,



Thanks to
Charles Pack Trust





TIME TO EXPLORE
Cleveland Metroparks

...to provide zoo browse & streambank bioengineering material,



Millstream Run - Timberlane

Thanks to CM Zoo chapter



Currently have
25 fences
protecting 34 ac.

