



Potential Projects for Accelerated Implementation

Board of Park
Commissioners

April 16, 2020



Potential Projects for Accelerated Implementation



ARRA
American Recovery and
Reinvestment Act of 2009



USDOT
TIGER
DOT.GOV

Potential Projects for Accelerated Implementation

Trail Projects

- Mastick Connector
- Hogsback Connector
- Solon to Chagrin Falls Trail
- Euclid Creek Greenway (South)
- Sagamore Connector
- Richmond Road Connector

Infrastructure Projects

- Hinckley Dam
- Garfield Pond
- Hawthorn Bridge over NSR
- Heritage Park / Rivergate Boat Docks

Regional Impact

- E 55th Water Recreation Center
- Gorilla Exhibit – RainForest Primate Addition

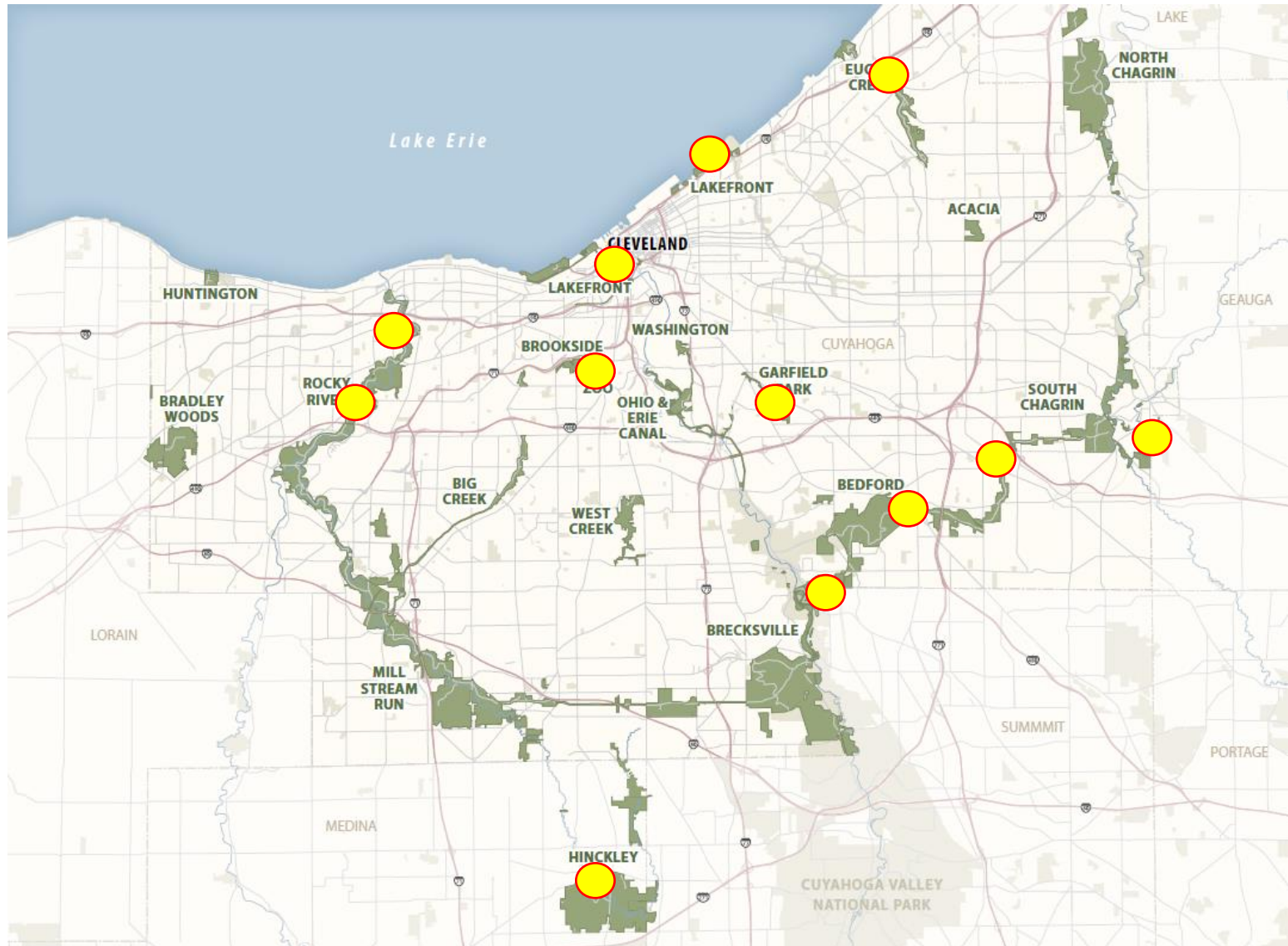
Zoo Projects

- Tropical Bears Exhibit
- Cheetah Exhibit
- African Elephant Crossing Night Range
- Zip Line

Partner Projects

- Canal Basin Park
- Irishtown Bend

Potential Projects for Accelerated Implementation



Potential Projects for Accelerated Implementation

Trail Projects

- Mastick Connector
- Hogsback Connector
- Solon to Chagrin Falls Trail
- Euclid Creek Greenway (South)
- Sagamore Connector
- Richmond Road Connector

Infrastructure Projects

- Hinckley Dam
- Garfield Pond
- Hawthorn Bridge over NSR
- Heritage Park / Rivergate Boat Docks

Regional Impact

- E 55th Water Recreation Center
- Gorilla Exhibit – RainForest Primate Addition

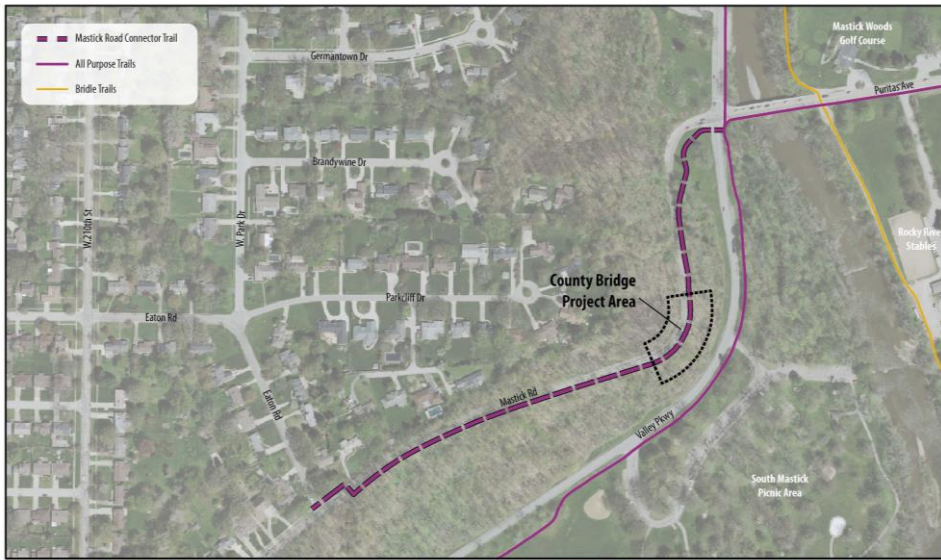
Zoo Projects

- Tropical Bears Exhibit
- Cheetah Exhibit
- African Elephant Crossing Night Range
- Zip Line

Partner Projects

- Canal Basin Park
- Irishtown Bend

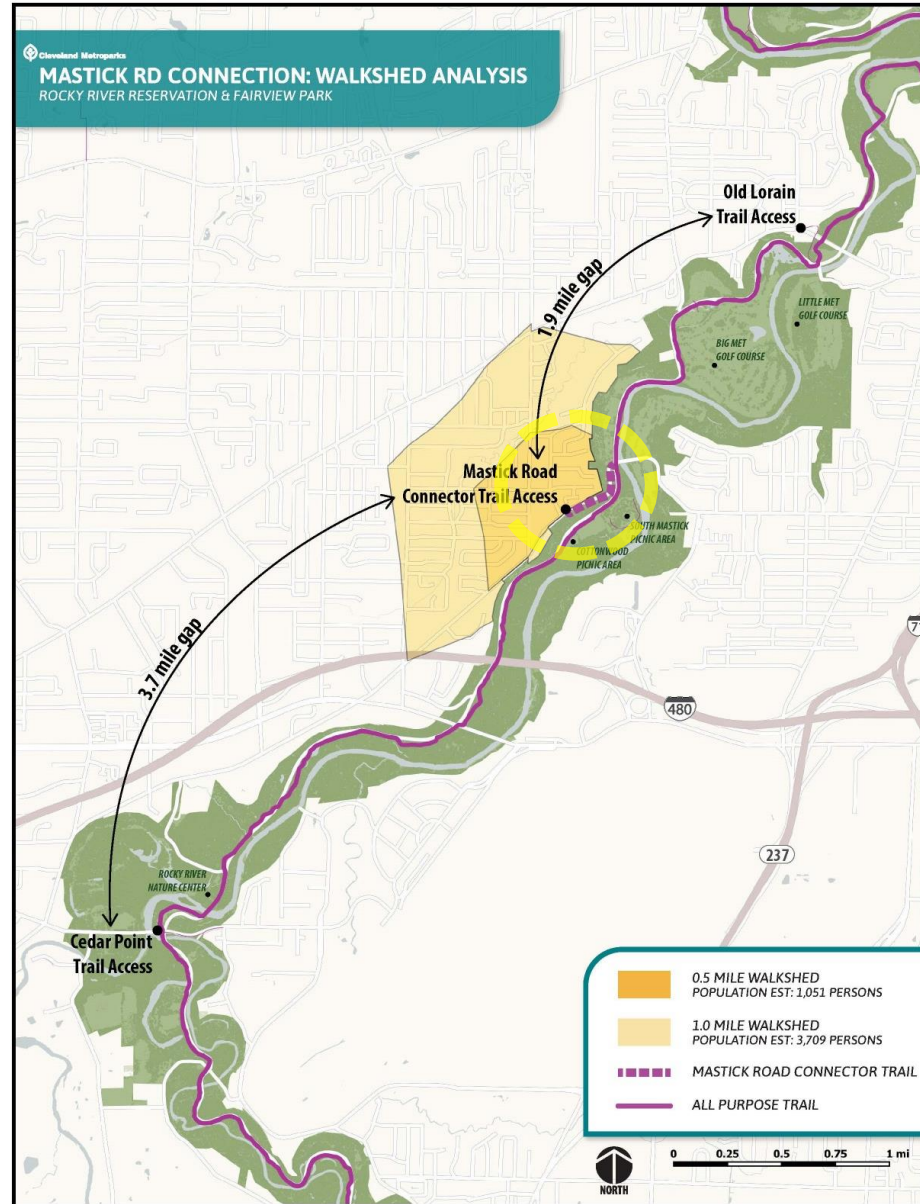
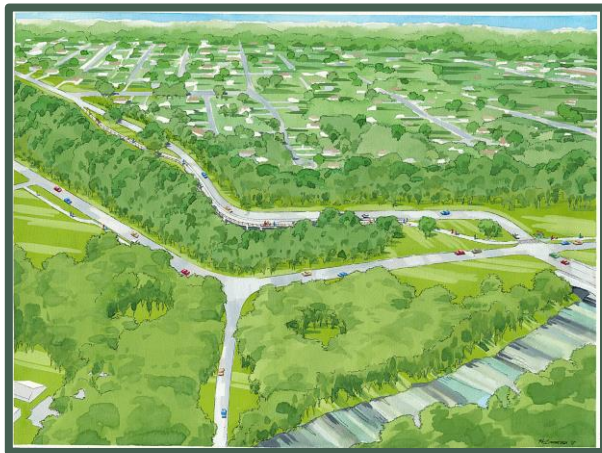
Mastick Connector



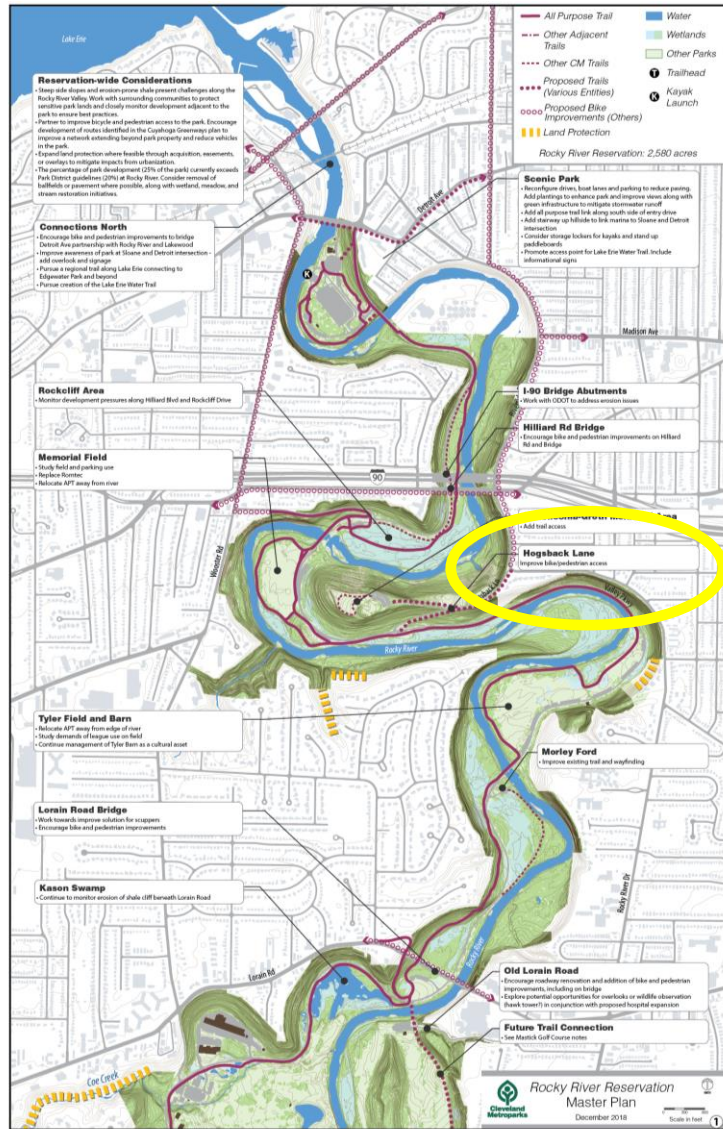
Mastick Road Connector Trail

January 2020

Rocky River Reservation



Hogsback Connector



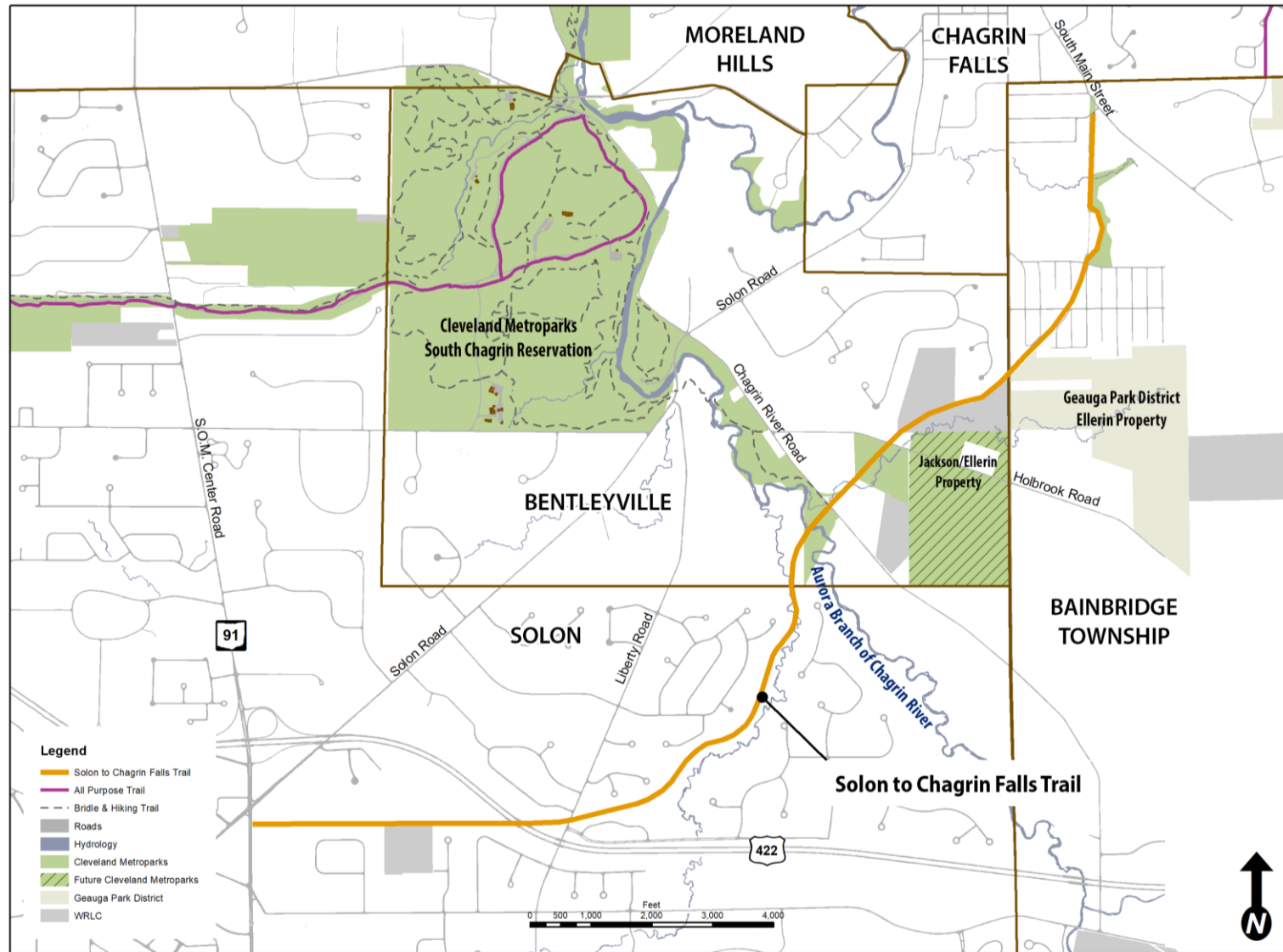
Hogsback Connector



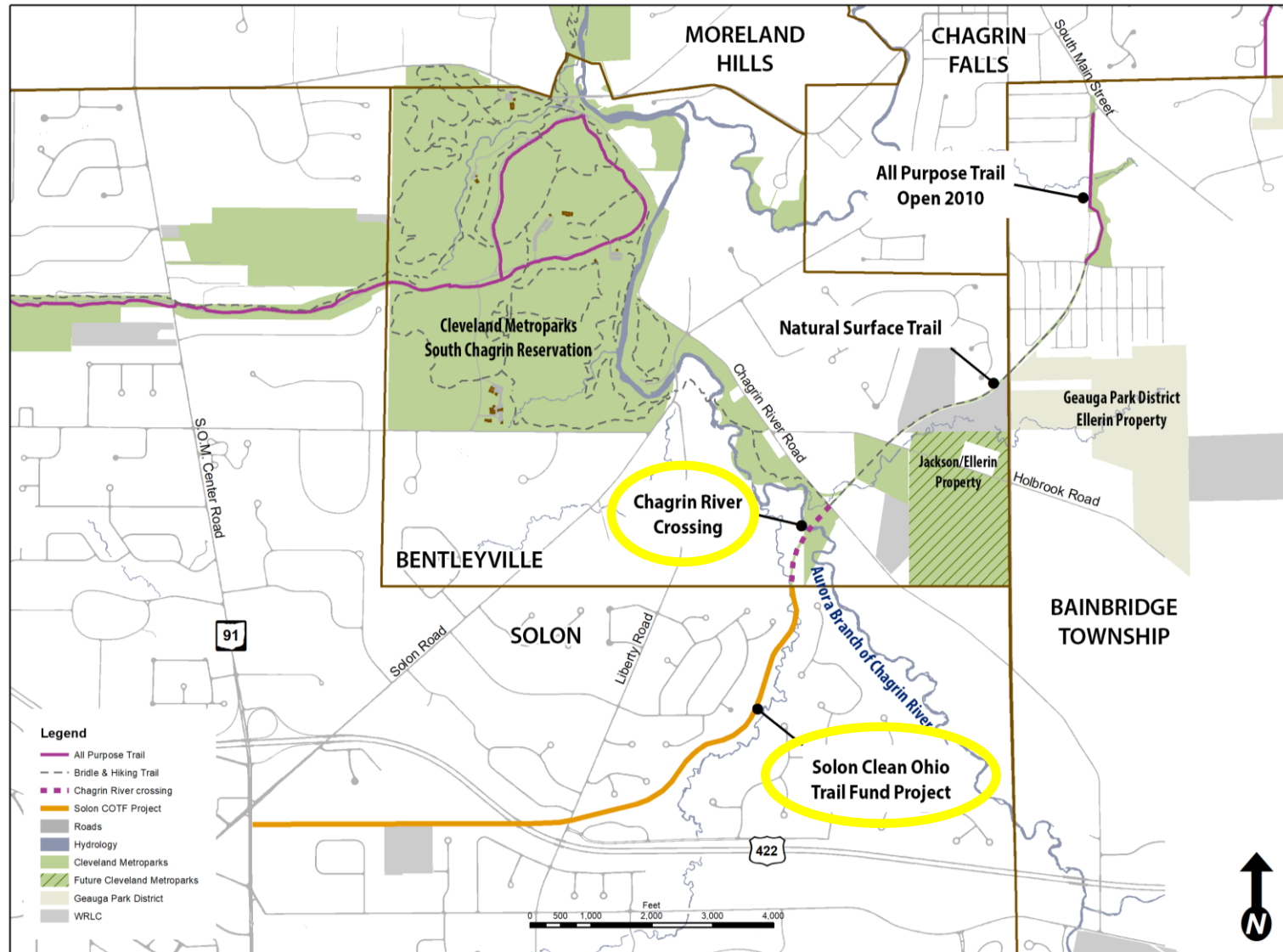
Figure 25

Hogsback Lane Improvements,
Hogsback Intersection Improvements
& Bike Lanes on Riverside Drive

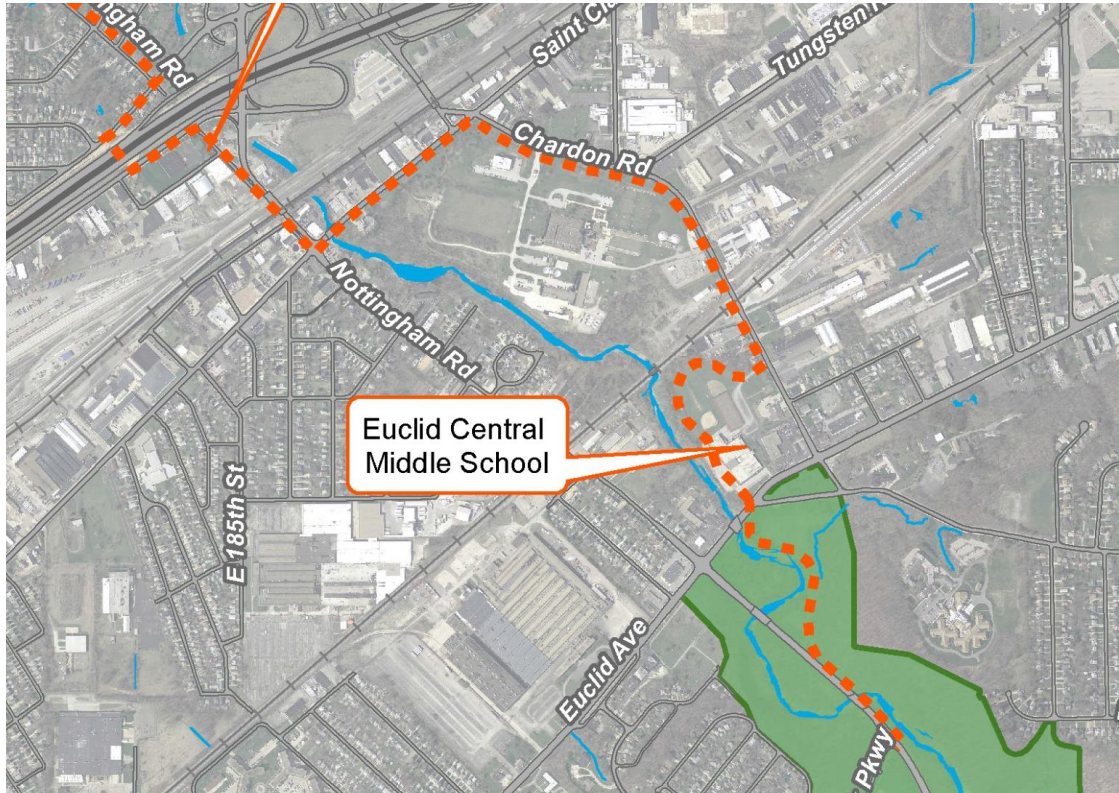
Solon to Chagrin Falls Trail



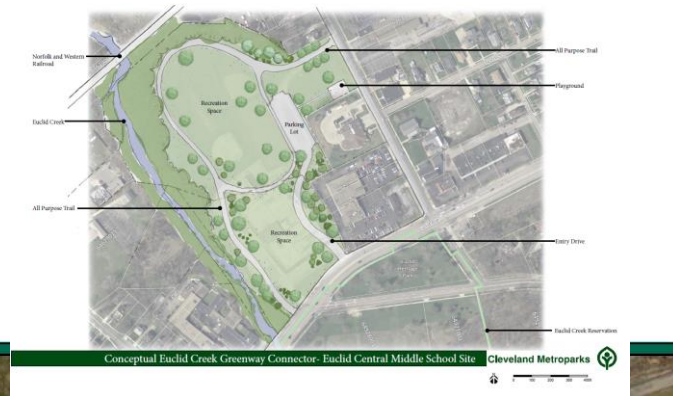
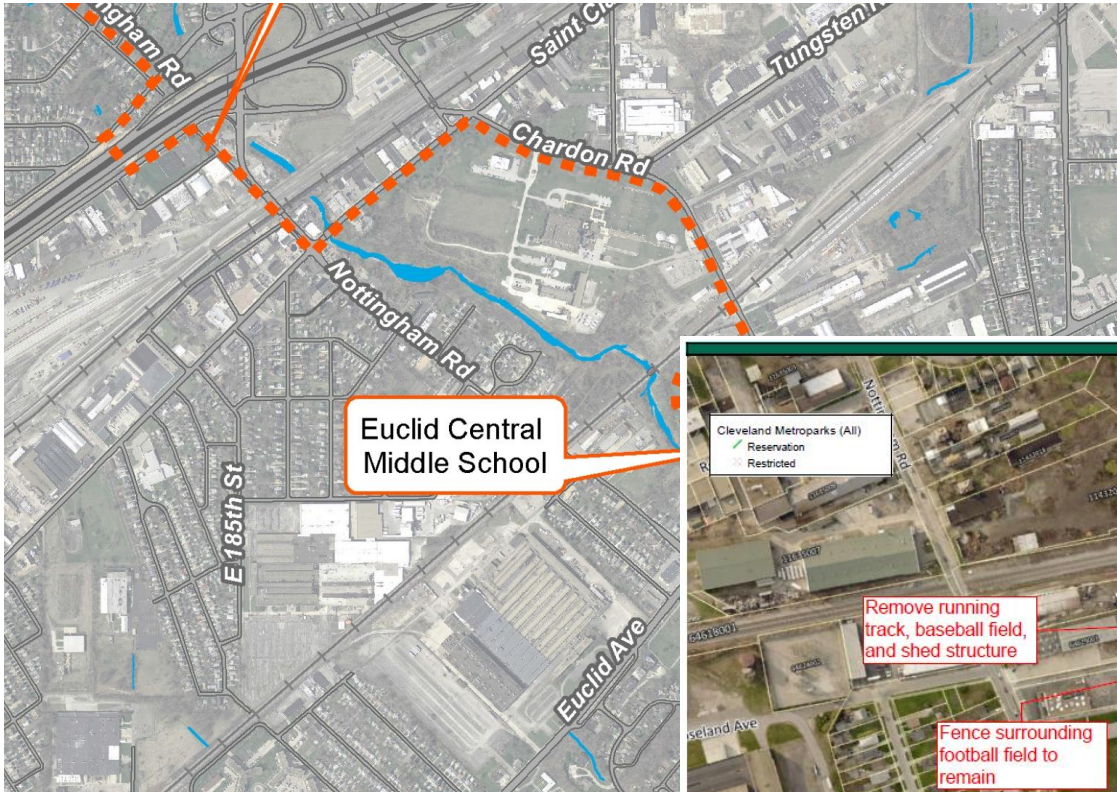
Solon to Chagrin Falls Trail



Euclid Creek Greenway



Euclid Creek Greenway



Remove running track, baseball field, and shed structure

Remove baseball field, tennis courts, and playground.

Fence surrounding football field to remain

Remove parking lot, tennis courts, and playground.

Driveways (2), parking lot (20 spaces), curbing, and sidewalk to remain

Curb cut and 20' of driveway to remain. Please install gate over driveway behind sidewalk.

Please confirm there are no cross-parking rights or agreements to share parking with neighbors for the removed parking lot

Legend:
 Cleveland Metroparks (All)
 Reservation
 Restricted

Euclid Central Middle School

Cleveland Metroparks

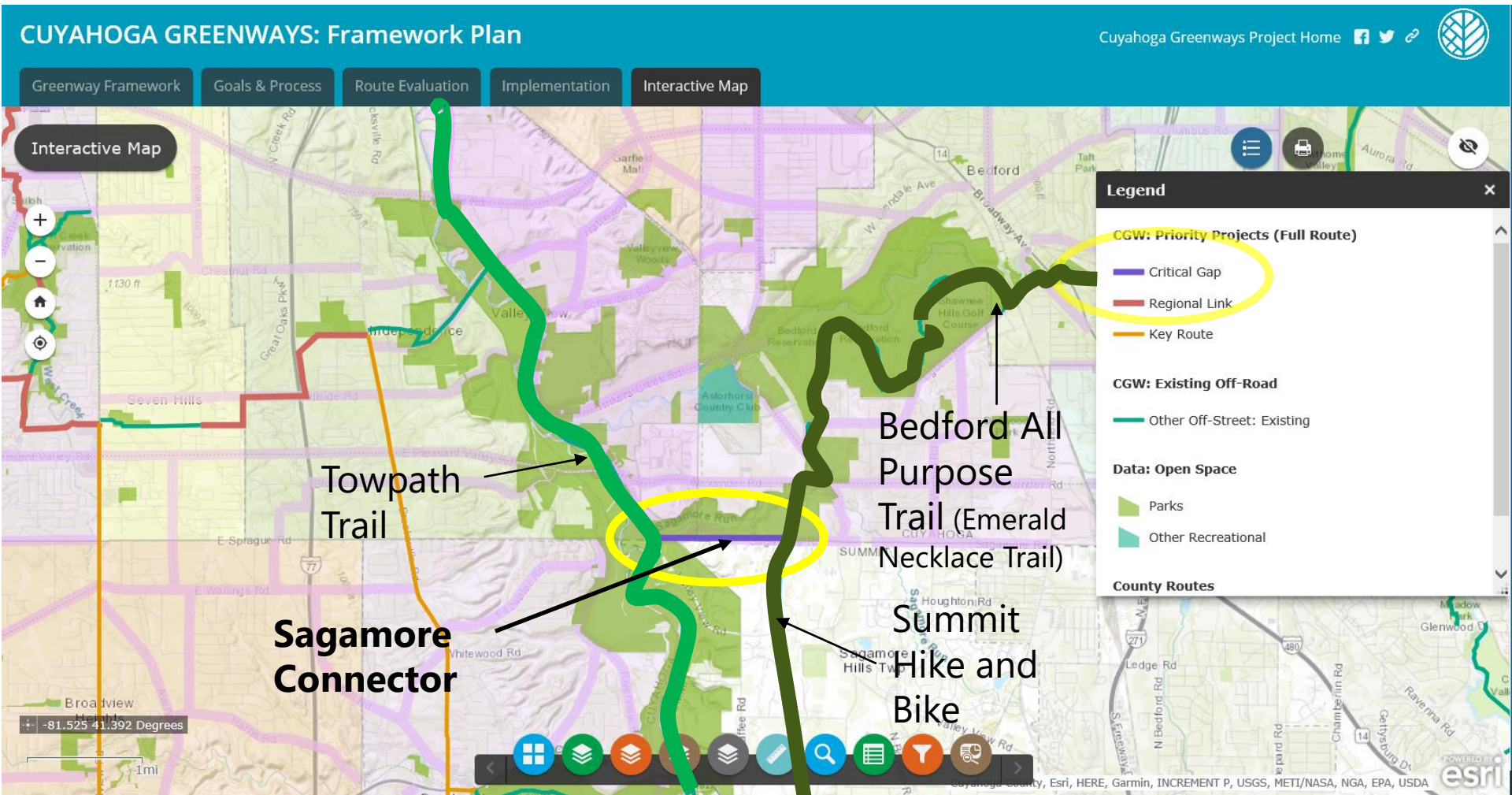
Euclid Central Middle School

Cleveland Metroparks

This information is for display purposes only. Cleveland Metroparks makes no warranties, expressed or implied, with respect to the accuracy of and the use of this map for any specific purpose. Cleveland Metroparks expressly disclaims any liability that may result from the use of this map. Map data used is from public sources. Branding and data © GeoInformation Systems, Inc. © 2014. For more information, please contact: Davey Walker, GIS Manager, 4150 Fulton Road, Cleveland, Ohio 44134-2000 or davey.walker@metro.parks.gov

0 150 300 450 600ft

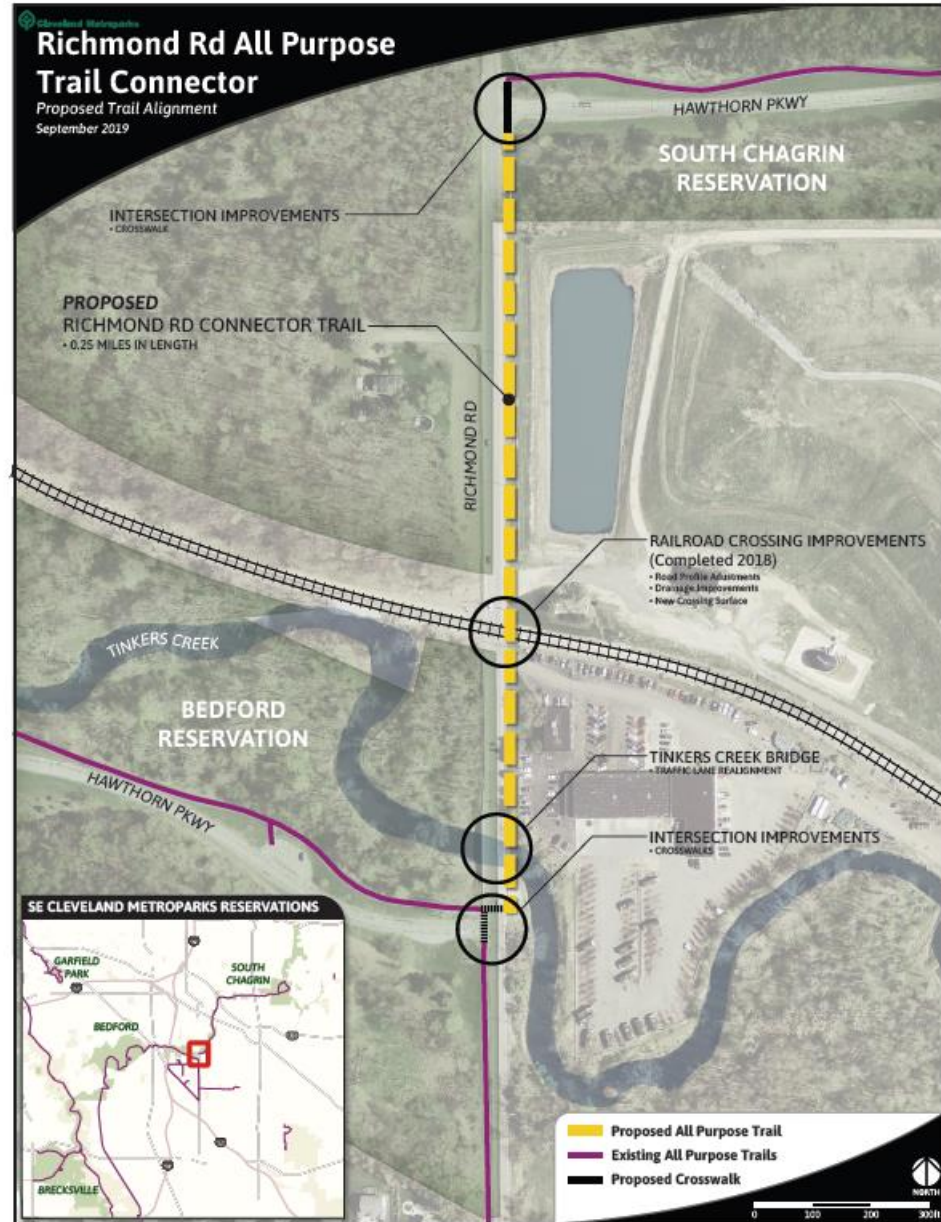
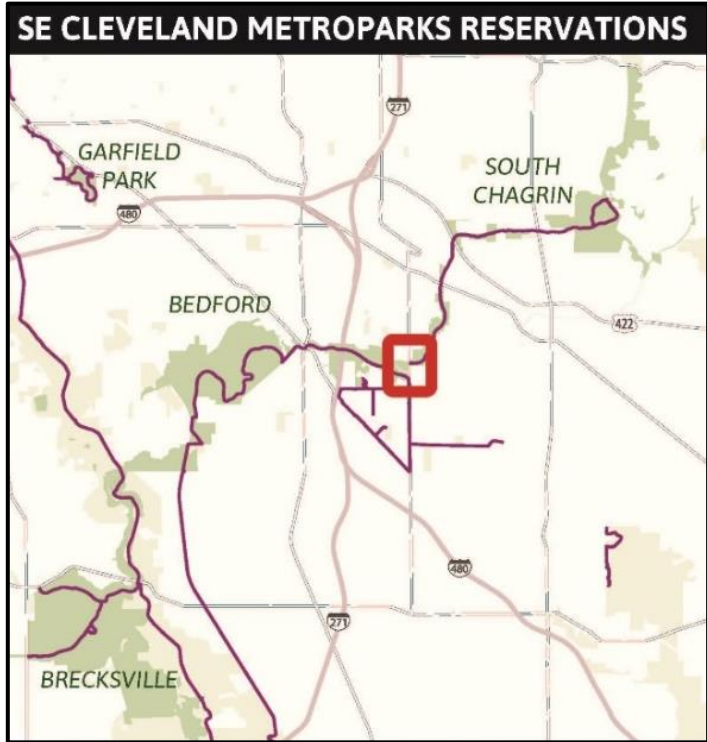
Sagamore Connector



Sagamore Connector



Richmond Road Connector



Potential Projects for Accelerated Implementation

Trail Projects

- Mastick Connector
- Hogsback Connector
- Solon to Chagrin Falls Trail
- Euclid Creek Greenway (South)
- Sagamore Connector
- Richmond Road Connector

Infrastructure Projects

- Hinckley Dam
- Garfield Pond
- Hawthorn Bridge over NSR
- Heritage Park / Rivergate Boat Docks

Regional Impact

- E 55th Water Recreation Center
- Gorilla Exhibit – RainForest Primate Addition

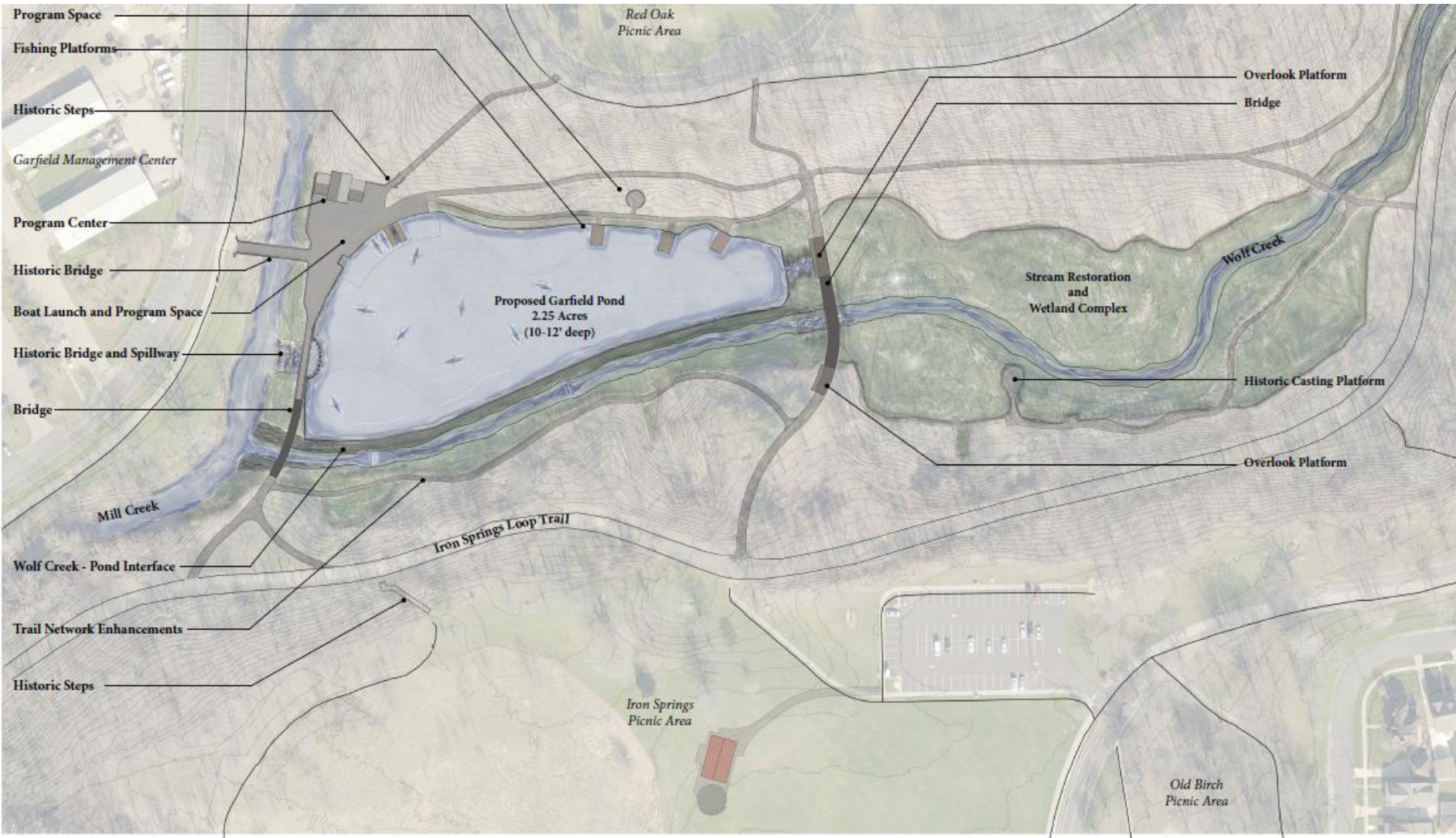
Zoo Projects

- Tropical Bears Exhibit
- Cheetah Exhibit
- African Elephant Crossing Night Range
- Zip Line

Partner Projects

- Canal Basin Park
- Irishtown Bend

Garfield Pond



Scale 1" = 200'
February 18, 2020

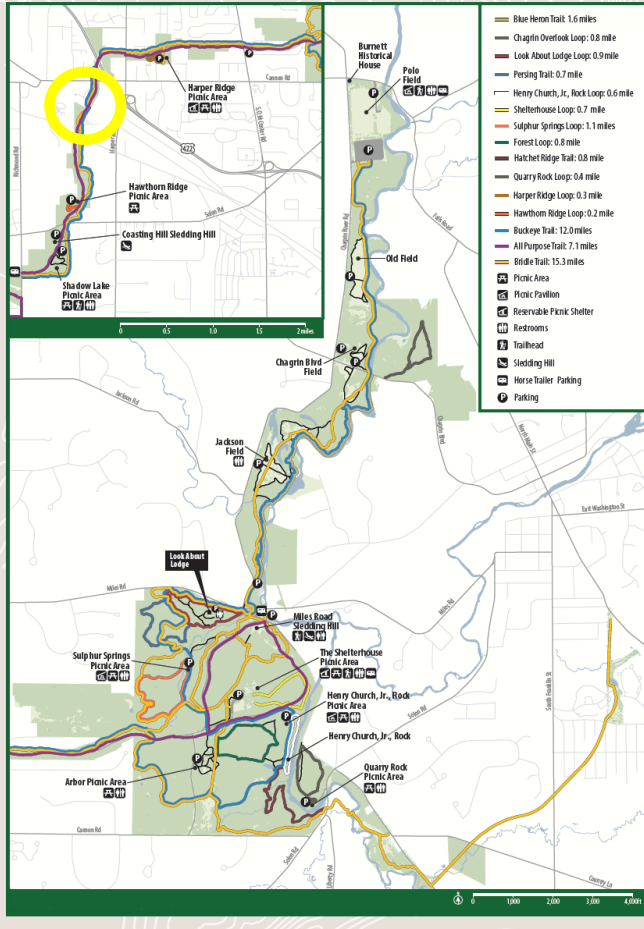
Garfield Pond Concept Plan
Garfield Reservation



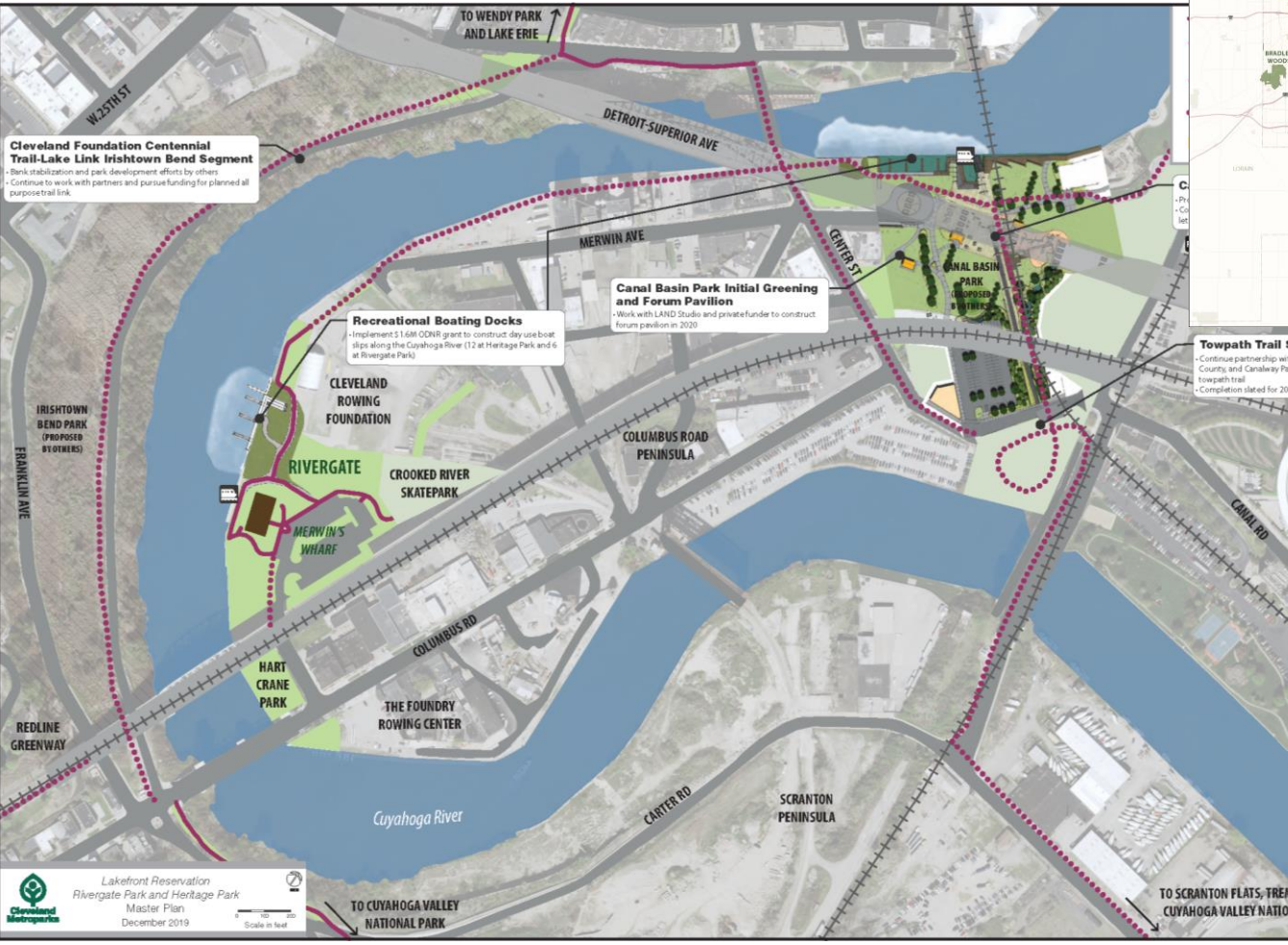
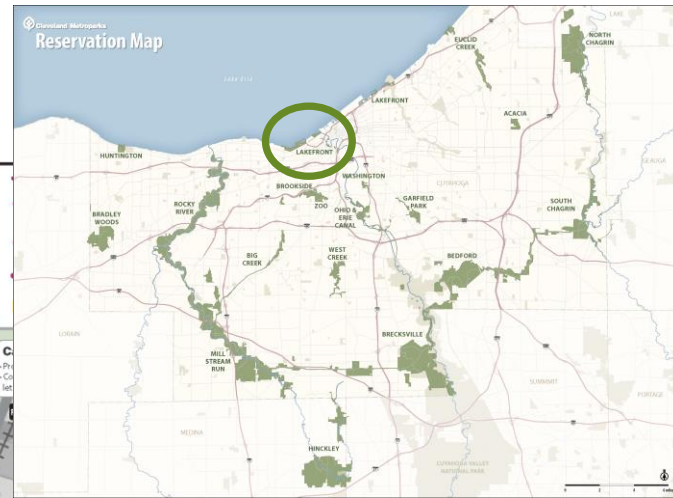
Hawthorn Bridge Over Erie Railroad (NSR)



South Chagrin Reservation

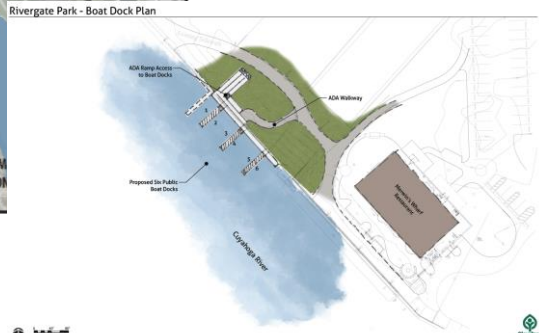
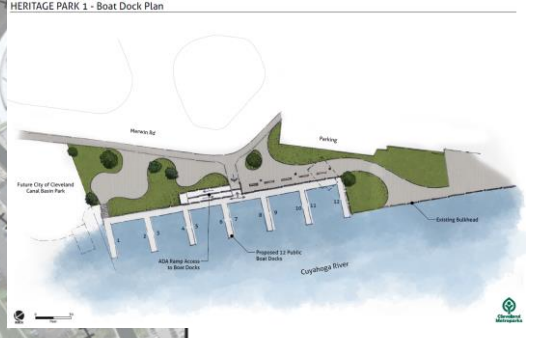


Heritage Park and Rivergate Boat Docks



Towpath Trail Stage 4

- Continue partnership with City of Cleveland, Cuyahoga County, and Canalway Partners to complete final phase of towpath trail
- Completion slated for 2021



Lakefront Reservation
Rivergate Park and Heritage Park
Master Plan
December 2019
Scale in feet

Potential Projects for Accelerated Implementation

Trail Projects

- Mastick Connector
- Hogsback Connector
- Solon to Chagrin Falls Trail
- Euclid Creek Greenway (South)
- Sagamore Connector
- Richmond Road Connector

Infrastructure Projects

- Hinckley Dam
- Garfield Pond
- Hawthorn Bridge over NSR
- Heritage Park / Rivergate Boat Docks

Regional Impact

- E 55th Water Recreation Center
- Gorilla Exhibit – RainForest Primate Addition

Zoo Projects

- Tropical Bears Exhibit
- Cheetah Exhibit
- African Elephant Crossing Night Range
- Zip Line

Partner Projects

- Canal Basin Park
- Irishtown Bend

E 55th Water Recreation Center

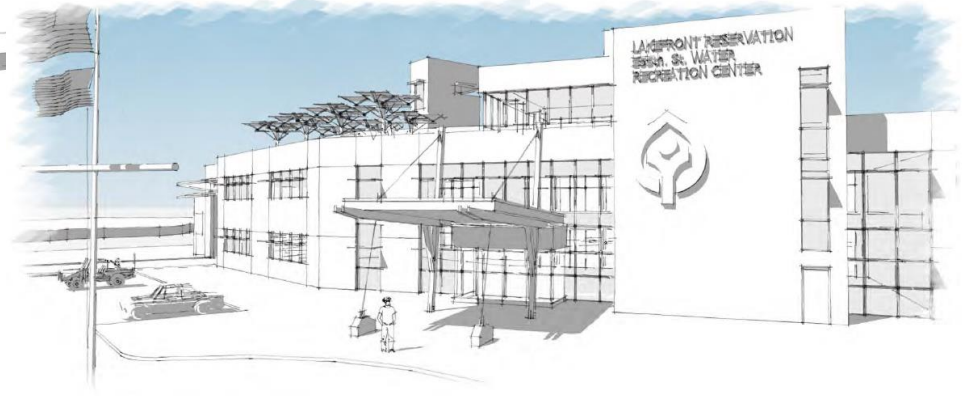


Conceptual Rendering - Option B

March 19, 2020

E. 55th Water Recreation Center

Lakefront Reservation



Conceptual Rendering Option A

March 18, 2020

E.55th St. Water Recreation Center

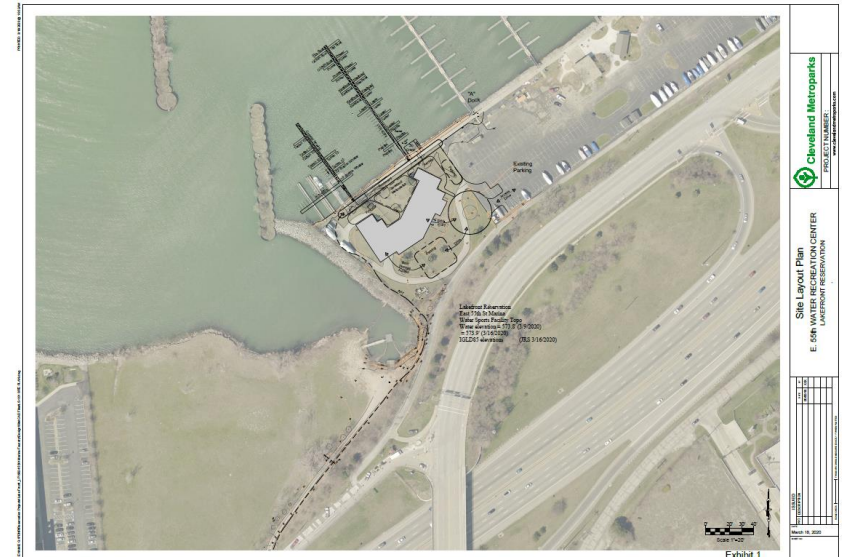
Lakefront Reservation



Site Layout Plan
E. 55th WATER RECREATION CENTER
LAKEFRONT RESERVATION

Cleveland Metroparks
10000 EAST AVENUE
CLEVELAND, OH 44124
781.316.2000

March 19, 2020



Site Layout Plan
E. 55th WATER RECREATION CENTER
LAKEFRONT RESERVATION

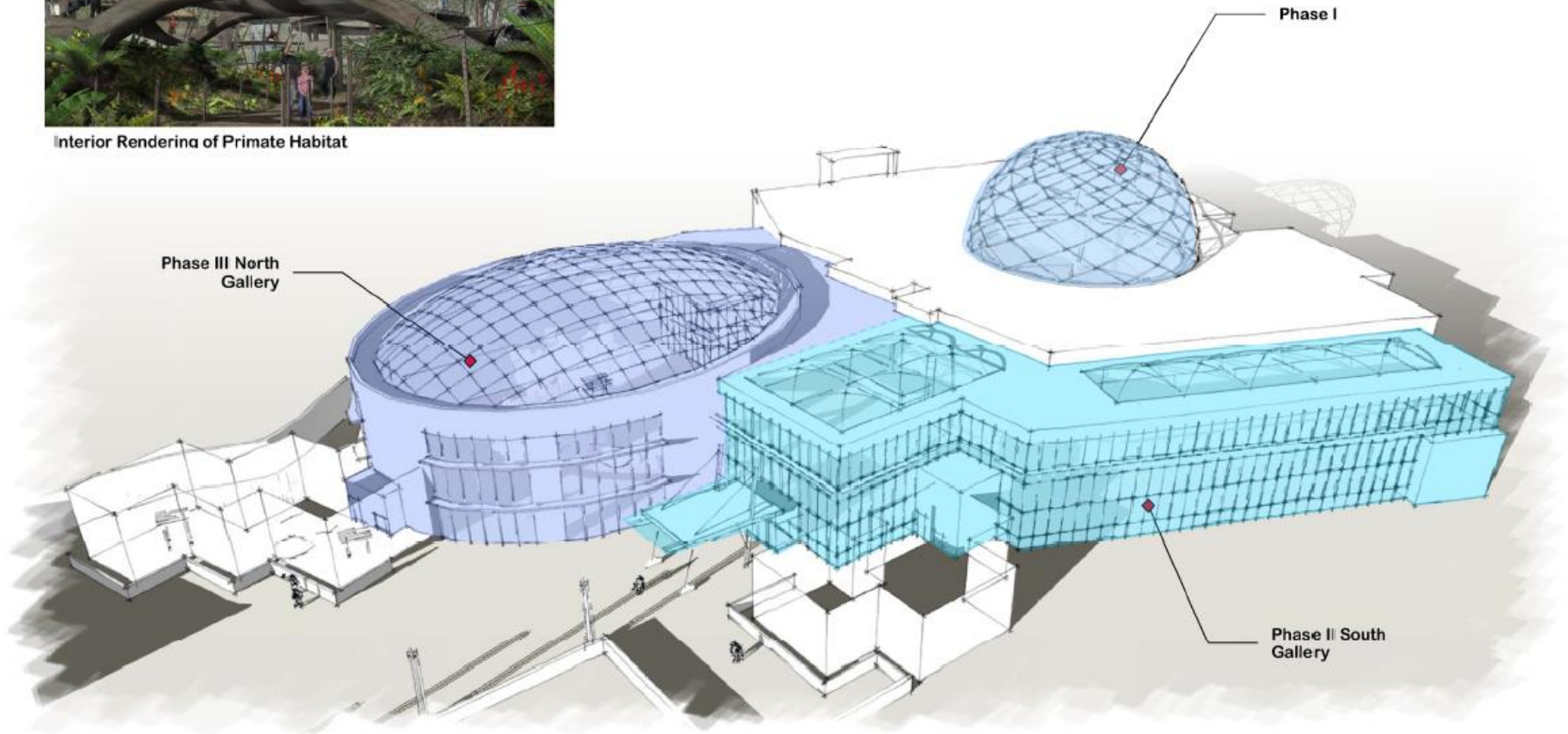
Cleveland Metroparks
10000 EAST AVENUE
CLEVELAND, OH 44124
781.316.2000

March 18, 2020

RainForest Primate Addition - Gorilla



Interior Rendering of Primate Habitat



Gorilla Exhibit

Not to Scale
December 2019

Passport to Wild: Zoo 150
Cleveland Metroparks Zoo



Potential Projects for Accelerated Implementation

Trail Projects

- Mastick Connector
- Hogsback Connector
- Solon to Chagrin Falls Trail
- Euclid Creek Greenway (South)
- Sagamore Connector
- Richmond Road Connector

Infrastructure Projects

- Hinckley Dam
- Garfield Pond
- Hawthorn Bridge over NSR
- Heritage Park / Rivergate Boat Docks

Regional Impact

- E 55th Water Recreation Center
- Gorilla Exhibit – RainForest Primate Addition

Zoo Projects

- Tropical Bears Exhibit
- Cheetah Exhibit
- African Elephant Crossing Night Range
- Zip Line

Partner Projects

- Canal Basin Park
- Irishtown Bend

Tropical Bear Exhibit



Tropical Bear Exhibit



TROPICAL BEAR HABITAT - TRAINING / VIEWING NODE

CLEVELAND METROPARKS ZOO - CLEVELAND, OHIO

VIAA Van Auken Akins ARCHITECTS IIC wdm ARCHITECTS

JANUARY 9, 2020

Cheetah Exhibit



RELOCATED GUEST PATH

EXPANDED CHEETAH HABITAT

NEW VEHICLE GATE

STORMWATER BIO CELL

NEW EXPANDED GUEST PAVILION

SCREENED BACK OF HOUSE

EXISTING CHEETAH HABITAT

EXISTING PCA BUILDING

Expansion Site Plan

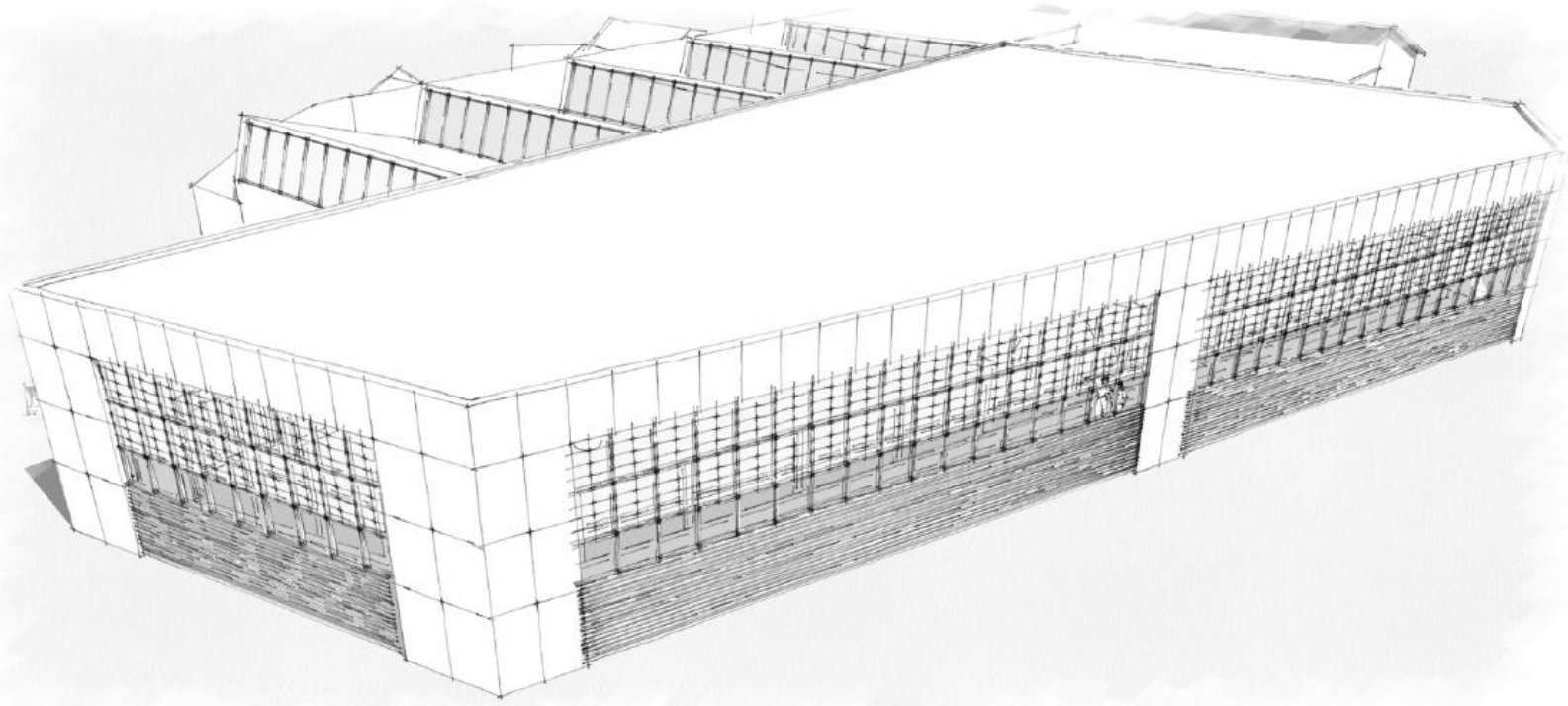
January 10, 2020

Cheetah Habitat

Cleveland Metroparks Zoo



African Elephant Crossing Night Range



Design Development Rendering

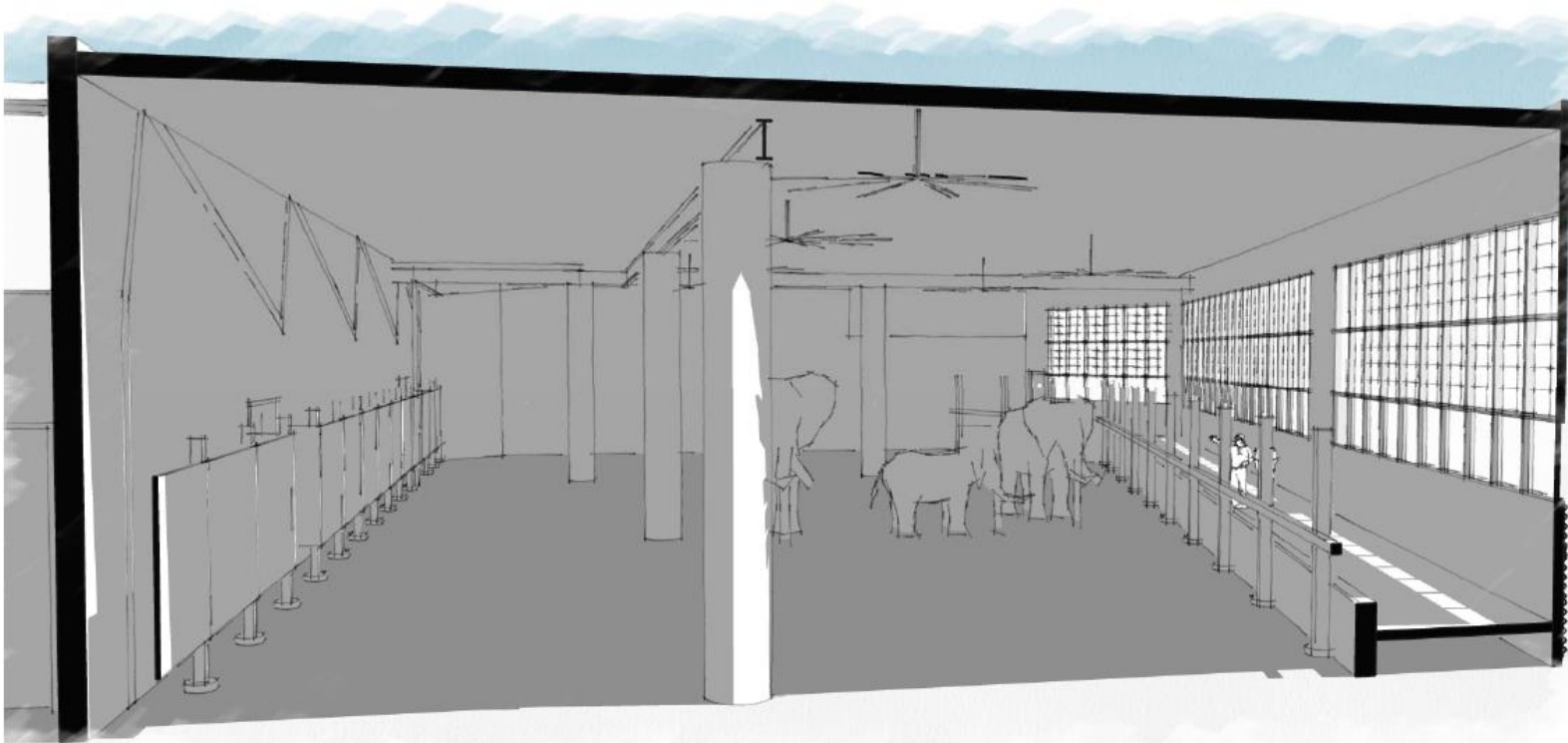
Not to Scale
March 25, 2019

AEC Night Range

Cleveland Zoo



African Elephant Crossing Night Range



Design Development Rendering

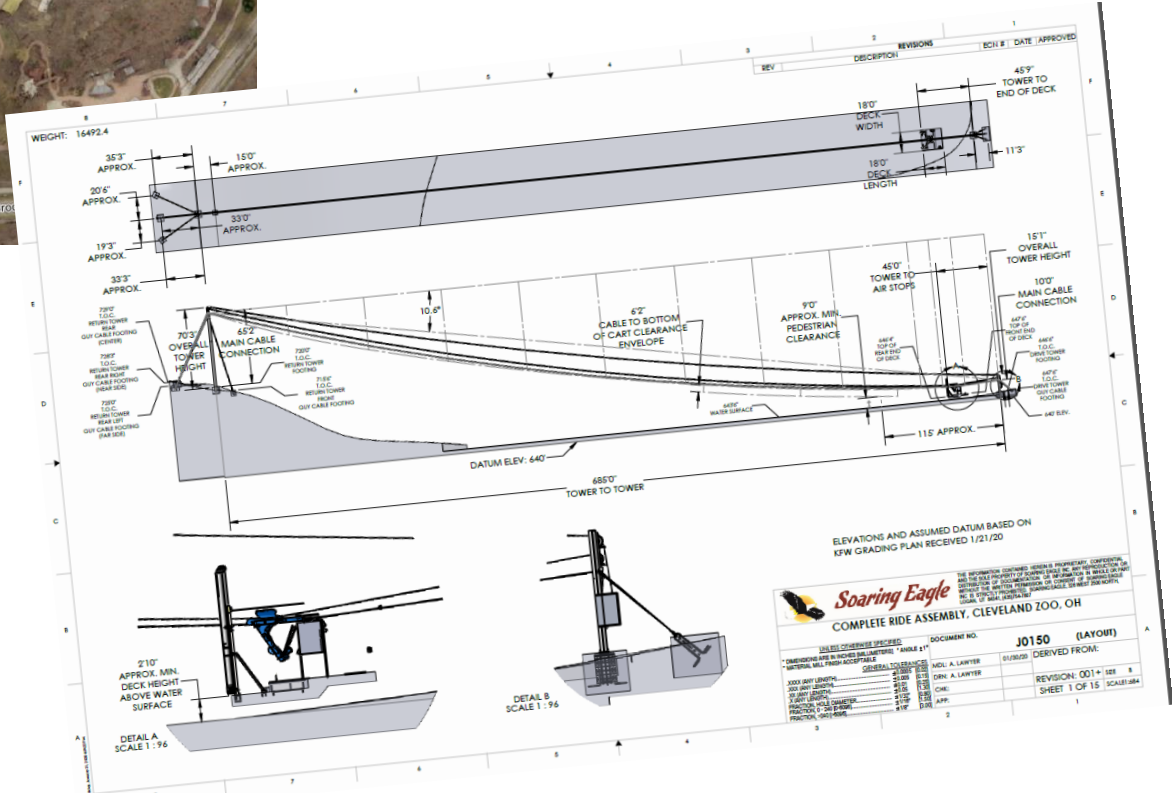
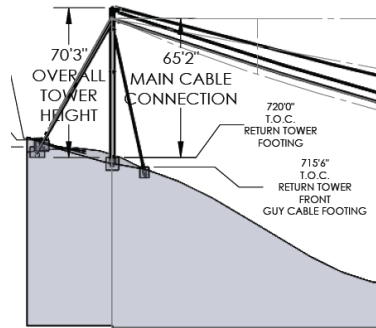
Not to Scale
March 25, 2019

AEC Night Range

Cleveland Zoo



Zip Line



Potential Projects for Accelerated Implementation

Trail Projects

- Mastick Connector
- Hogsback Connector
- Solon to Chagrin Falls Trail
- Euclid Creek Greenway (South)
- Sagamore Connector
- Richmond Road Connector

Infrastructure Projects

- Hinckley Dam
- Garfield Pond
- Hawthorn Bridge over NSR
- Heritage Park / Rivergate Boat Docks

Regional Impact

- E 55th Water Recreation Center
- Gorilla Exhibit – RainForest Primate Addition

Zoo Projects

- Tropical Bears Exhibit
- Cheetah Exhibit
- African Elephant Crossing Night Range
- Zip Line

Partner Projects

- Canal Basin Park
- Irishtown Bend

Canal Basin Park



Image courtesy of Google Earth

Concept C- Greening Master Plan

Canal Basin Park – Towpath Stage 4



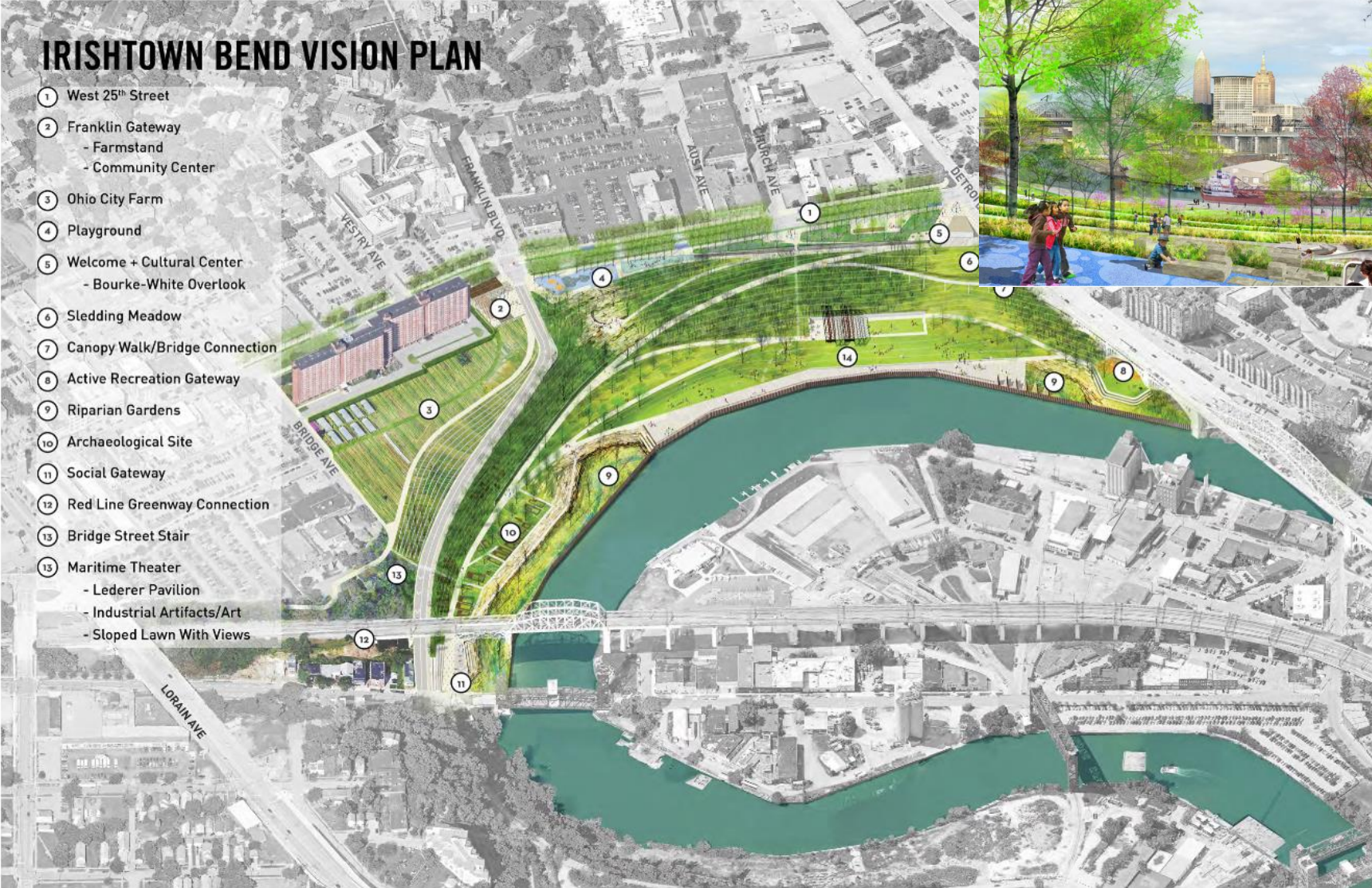
Canal Basin Park Towpath Improvement & Greening Plan

February 22, 2019 | 23

Irishtown Bend

IRISHTOWN BEND VISION PLAN

- 1 West 25th Street
- 2 Franklin Gateway
 - Farmstand
 - Community Center
- 3 Ohio City Farm
- 4 Playground
- 5 Welcome + Cultural Center
 - Bourke-White Overlook
- 6 Sledding Meadow
- 7 Canopy Walk/Bridge Connection
- 8 Active Recreation Gateway
- 9 Riparian Gardens
- 10 Archaeological Site
- 11 Social Gateway
- 12 Red Line Greenway Connection
- 13 Bridge Street Stair
- 15 Maritime Theater
 - Lederer Pavilion
 - Industrial Artifacts/Art
 - Sloped Lawn With Views



Potential Projects for Accelerated Implementation

Trail Projects

- Mastick Connector
- Hogsback Connector
- Solon to Chagrin Falls Trail
- Euclid Creek Greenway (South)
- Sagamore Connector
- Richmond Road Connector

Infrastructure Projects

- Hinckley Dam
- Garfield Pond
- Hawthorn Bridge over NSR
- Heritage Park / Rivergate Boat Docks

Regional Impact

- E 55th Water Recreation Center
- Gorilla Exhibit – RainForest Primate Addition

Zoo Projects

- Tropical Bears Exhibit
- Cheetah Exhibit
- African Elephant Crossing Night Range
- Zip Line

Partner Projects

- Canal Basin Park
- Irishtown Bend



Potential Projects for Accelerated Implementation

Board of Park
Commissioners

April 16, 2020

