



RADAR MONITORING OF BIRD AND BAT MIGRATION IN THE GREAT LAKES

Presenter: Michael Wells

USFWS Avian Radar Team:

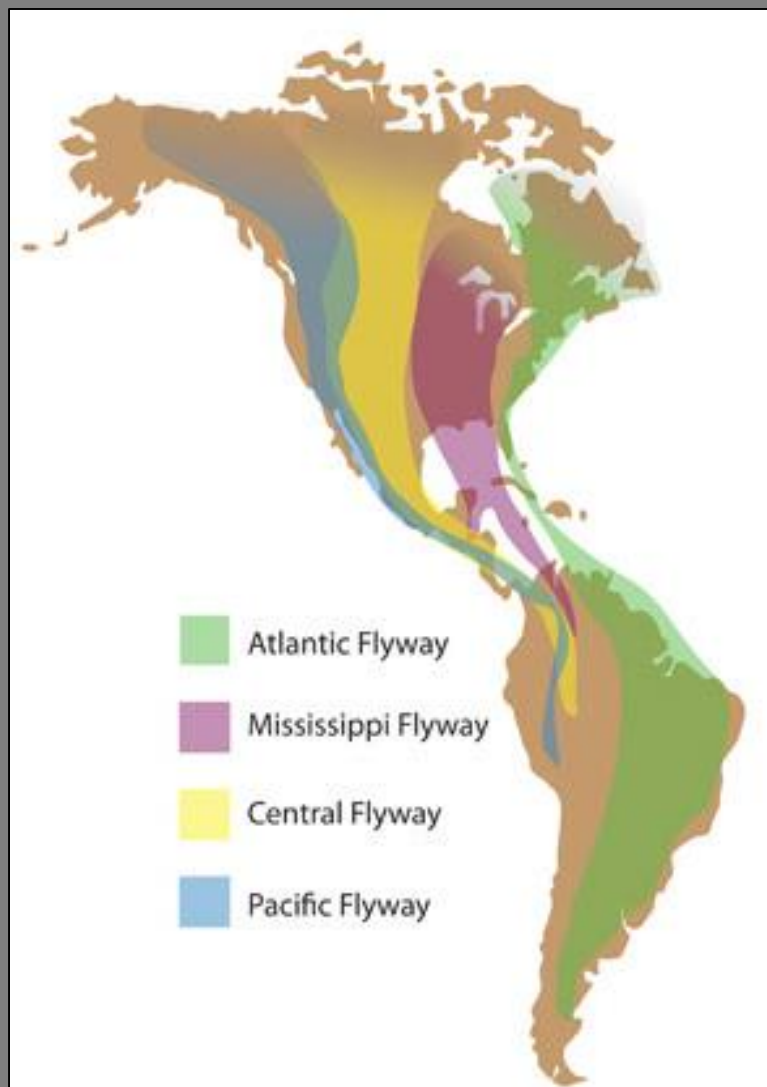
Jeff Gosse, Kevin Heist, Nathan Rathbun,

Erik Olson, Beth Rigby

www.fws.gov/radar



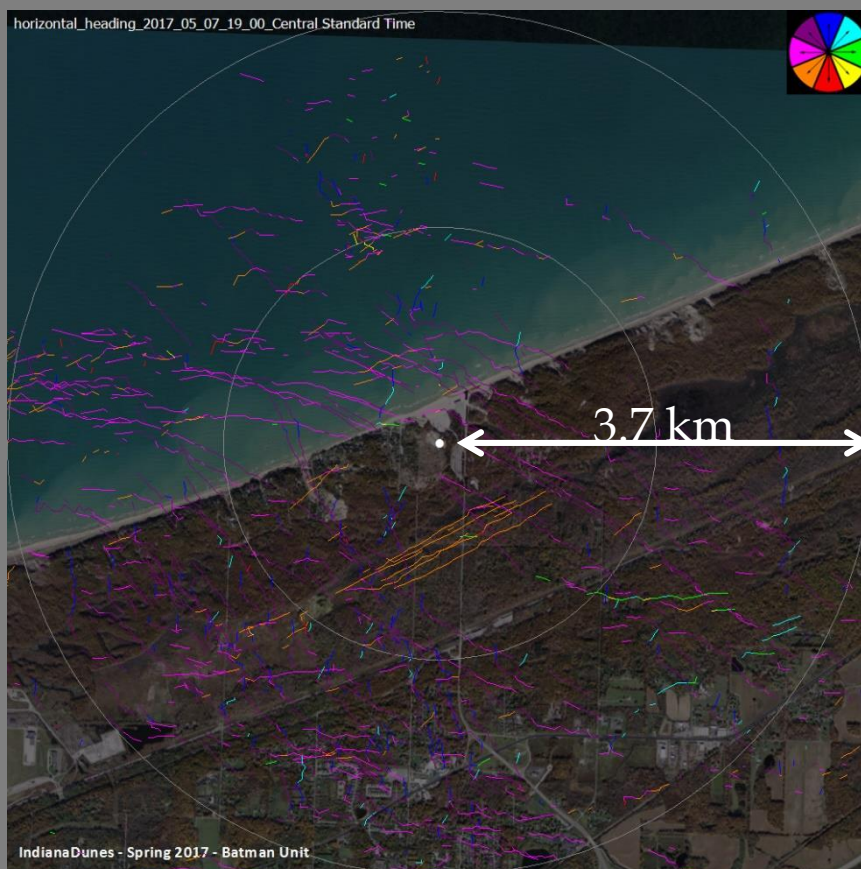
Migration Routes and Timing



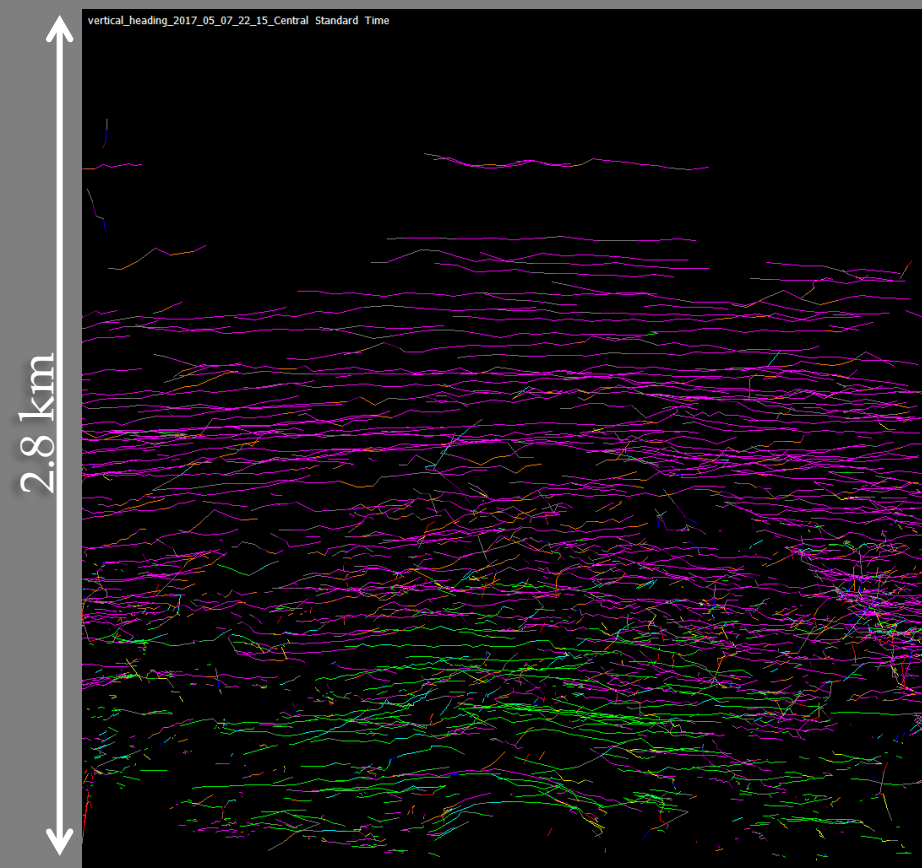


Trackplots

▣ Horizontal (HSR) view



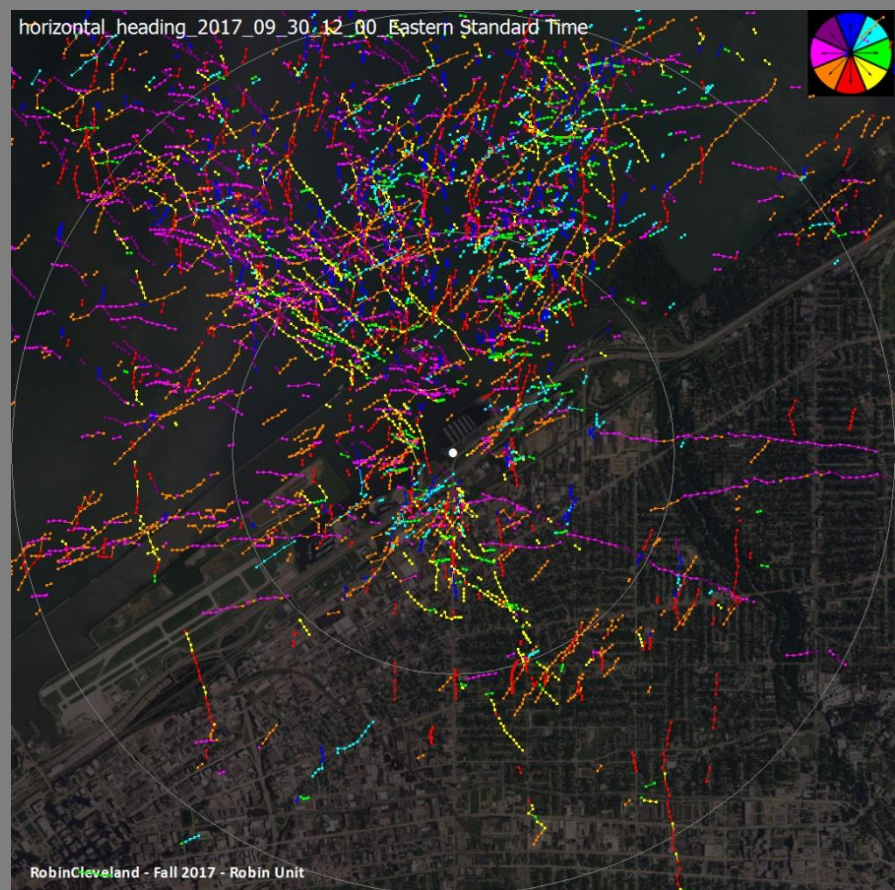
▣ Vertical (VSR) view



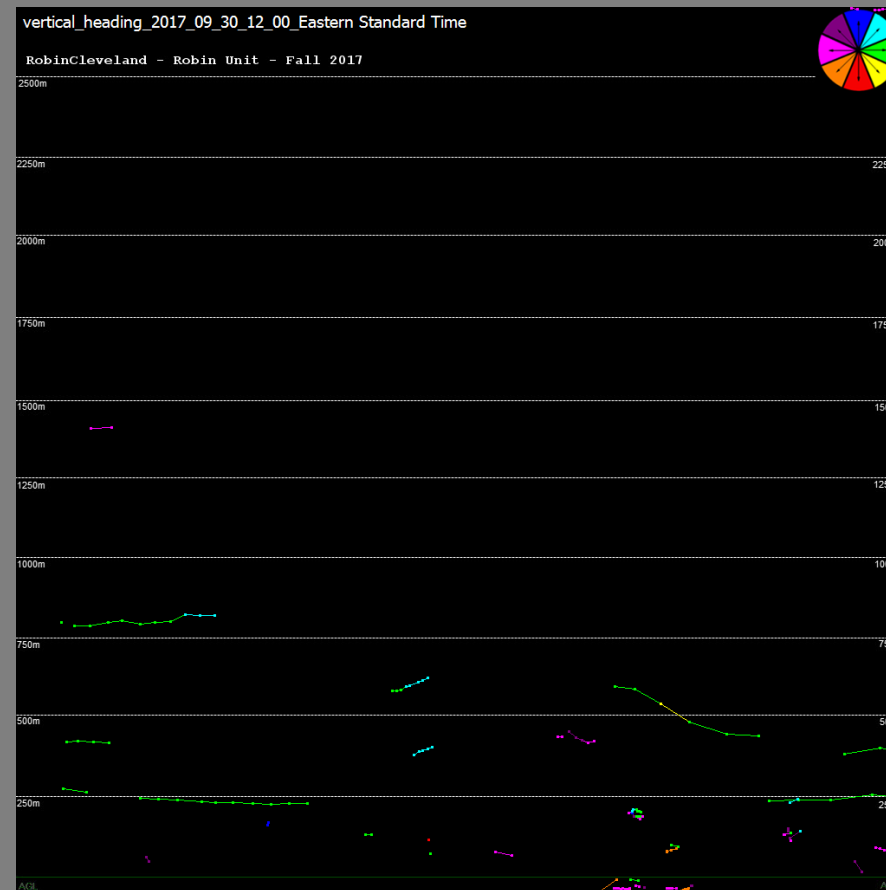


Migration Example

Sept 30 - Oct1, 2017: 1:00PM



Horizontal

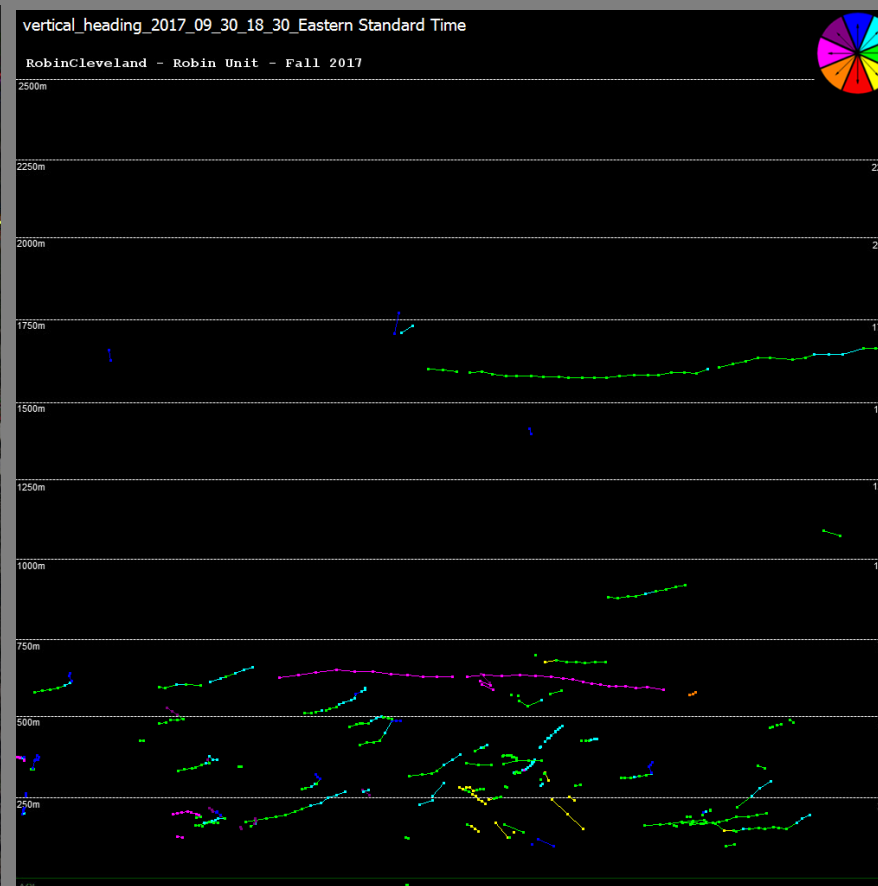
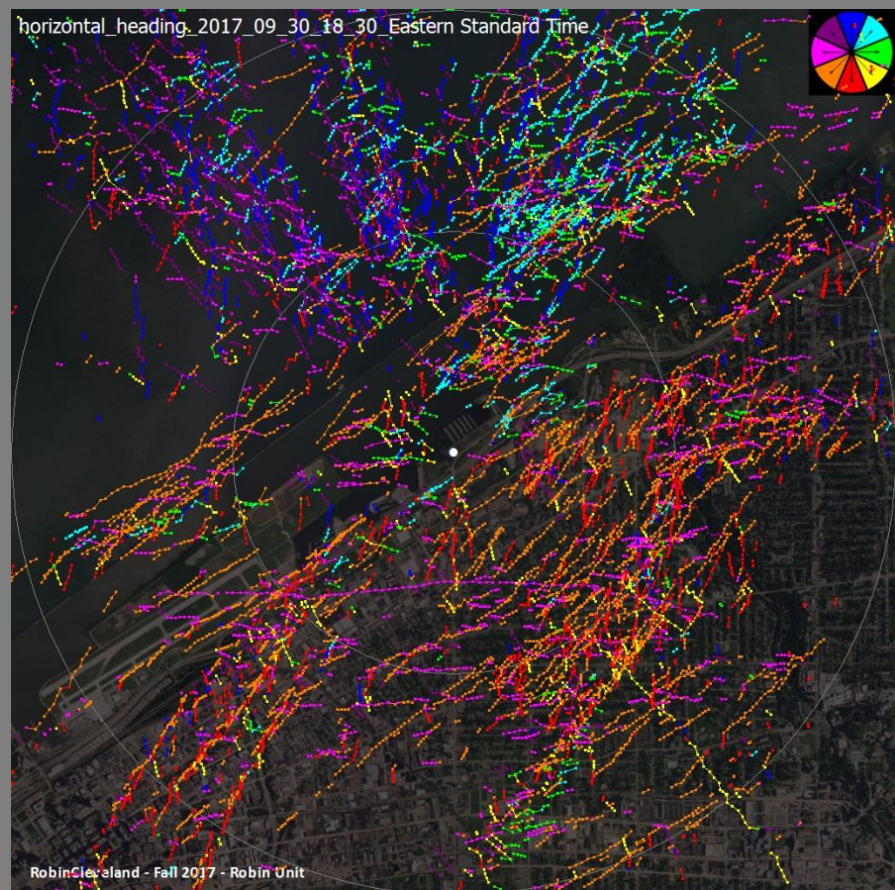


Vertical



Migration Example

7:30 PM



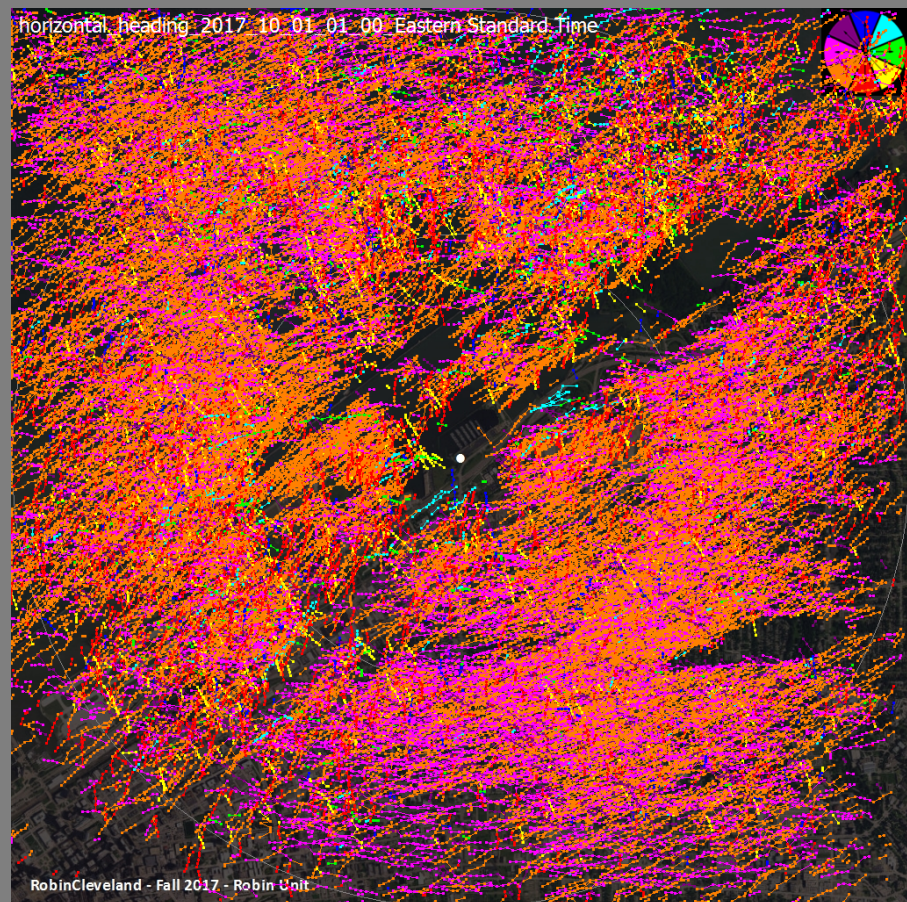
Horizontal

Sunset 7:10pm

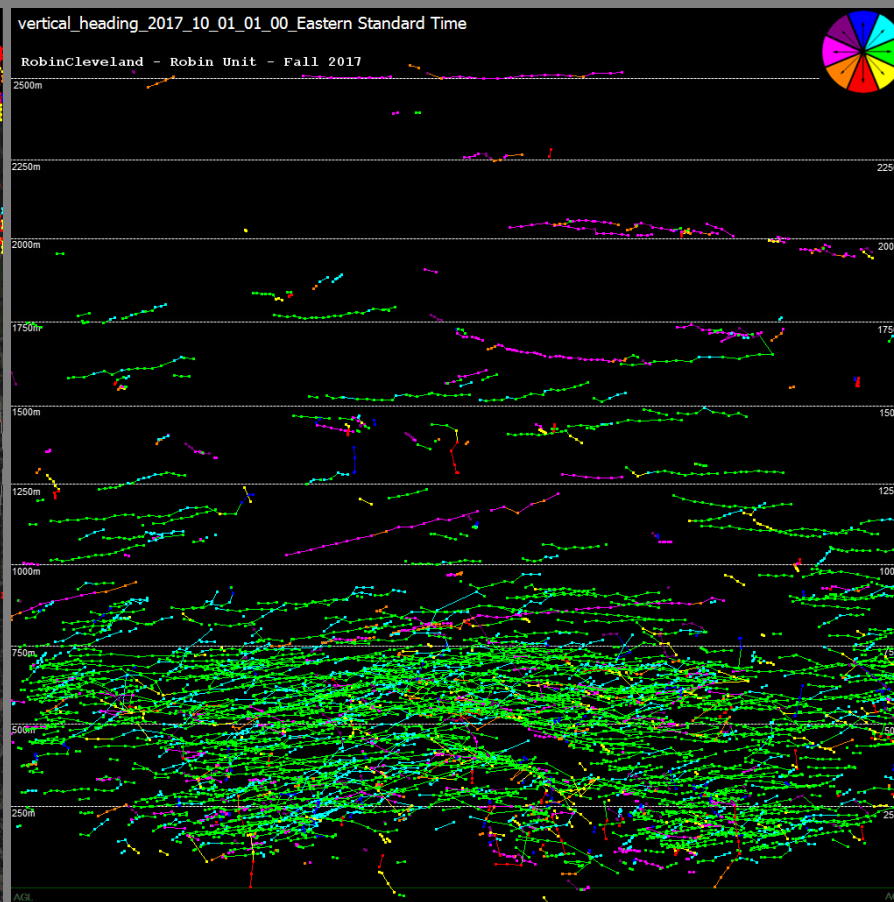
Vertical



Migration Example: Midnight



Horizontal

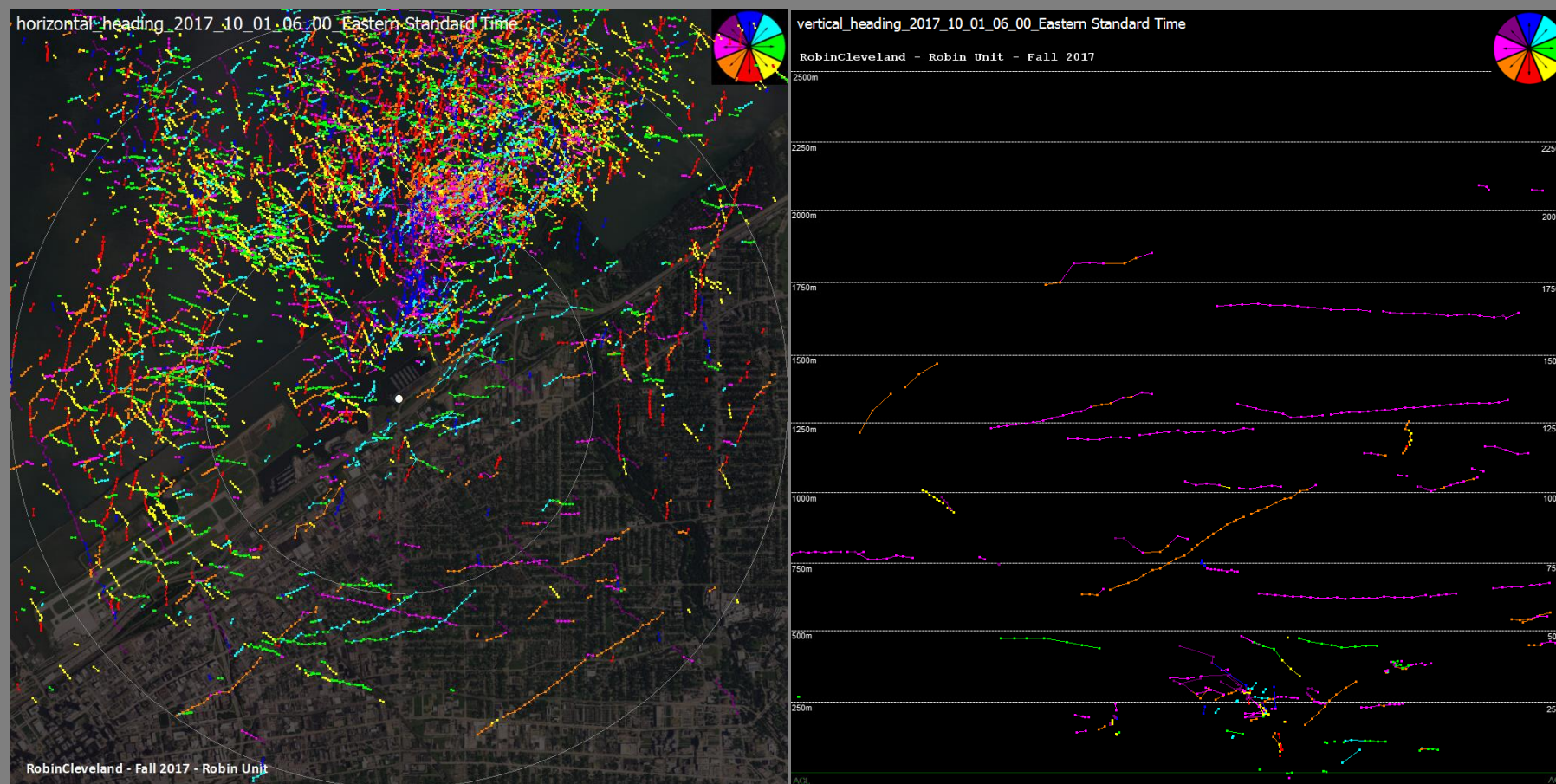


Vertical



Migration Example

7:00am

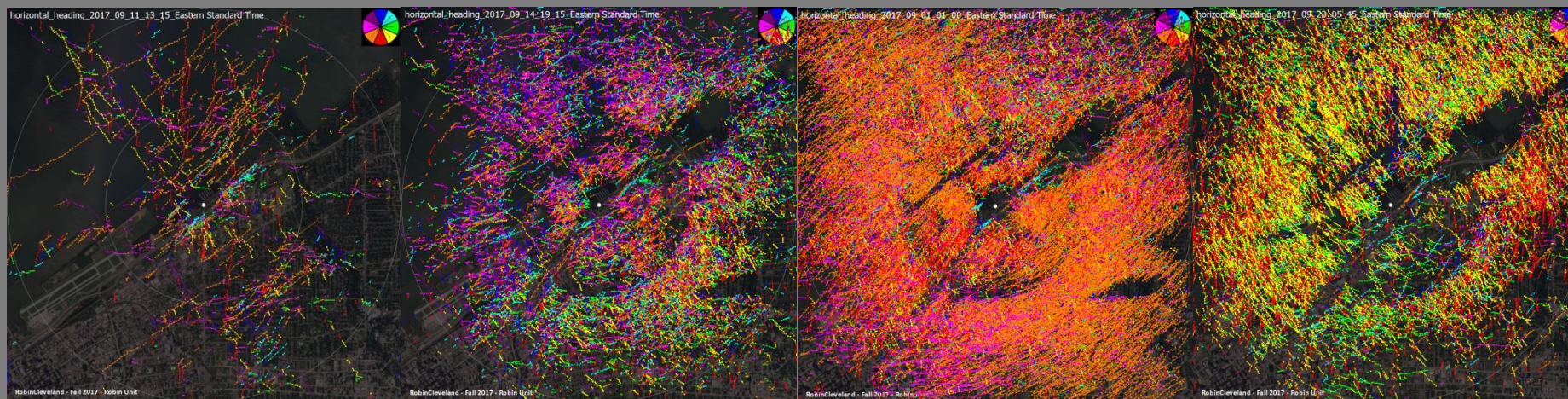
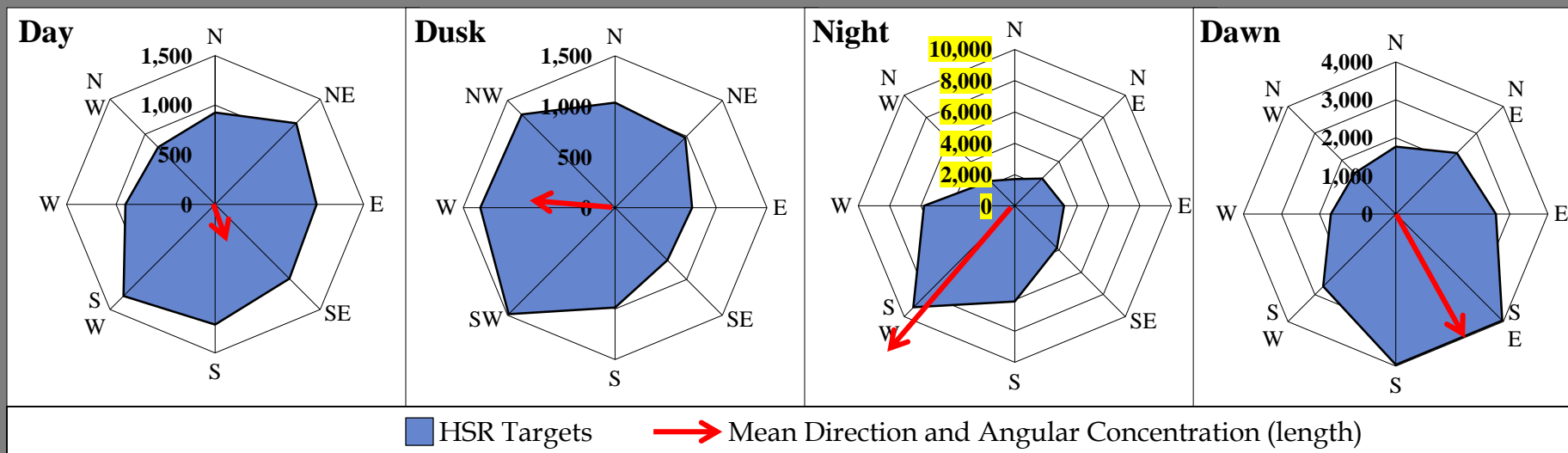


Horizontal

Vertical



Direction of Flight



Day

Dusk

Night

Dawn



Conclusions

- ▣ Migrant Birds and bats are crossing Lake Erie near Cleveland and migrating through the area at apparently very high rates
- ▣ Habitat near shore is crucial to migrants coming across the lake
- ▣ Urban bird initiatives are important for protected migrants (e.g. coastal & river corridor habitat, lights out initiatives)

FWS Contact info:

Michael Wells
Region 3 Office
Michael_wells@fws.gov

Megan Seymour
Ohio Field Office
megan_seymour@fws.gov

www.fws.gov/radar

