

# TIME TO EXPLORE

Cleveland Metroparks

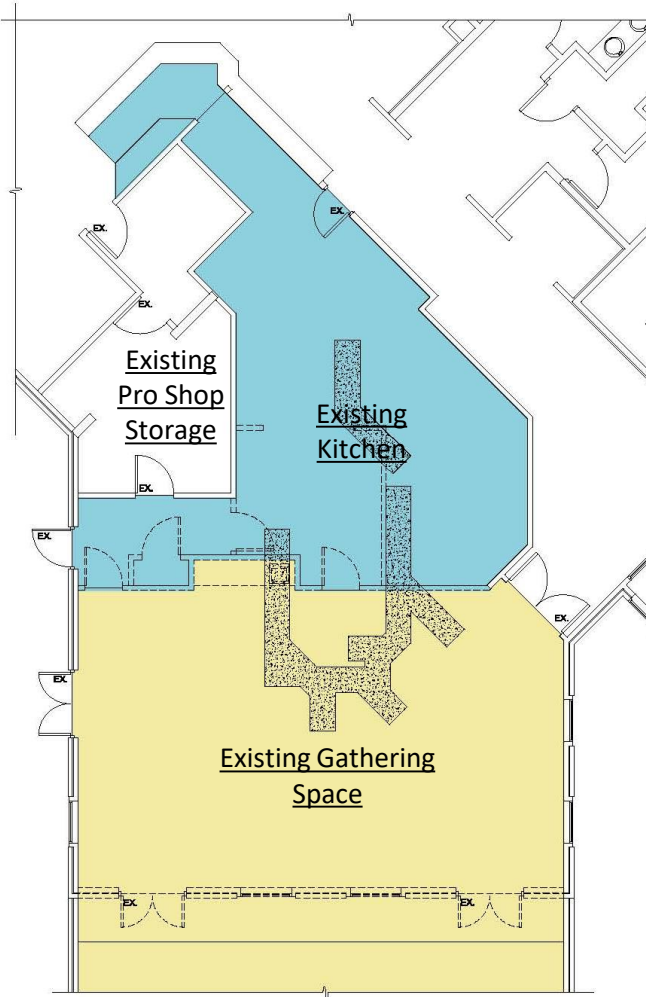
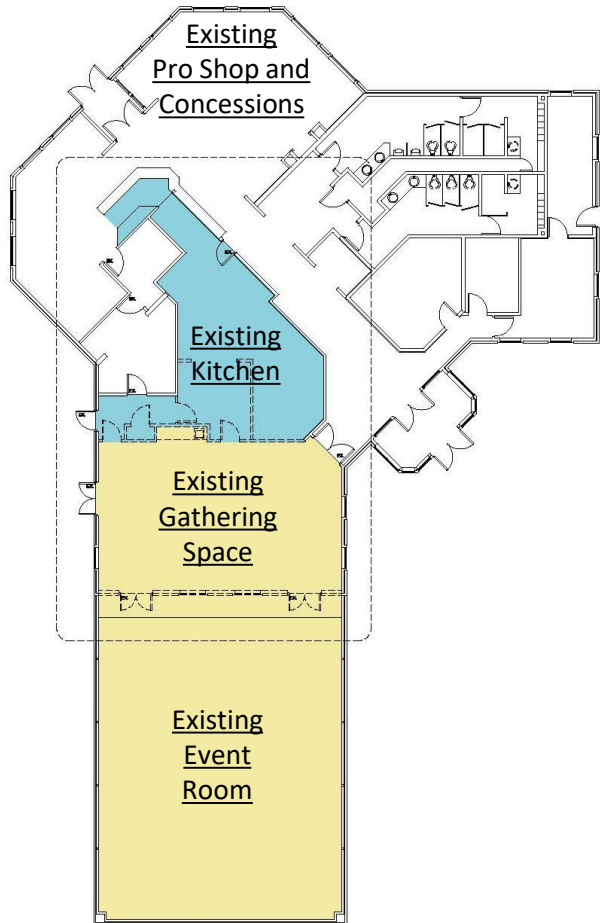
## Sleepy Hollow Club House Renovations

Brecksville Reservation





# Existing Sleepy Hollow Club House



## Existing Kitchen

- Approximately 730 sf
- Small and Congested space
- Size Limits capacity and type of food served

## Existing Gathering Space and Event Area

- Gathering Space is approximately 915 sf
- Event Room is approximately 1,995 sf
- Existing partition wall divides the spaces
- Limited group sizes due to existing wall

# Existing Sleepy Hollow Club House Kitchen

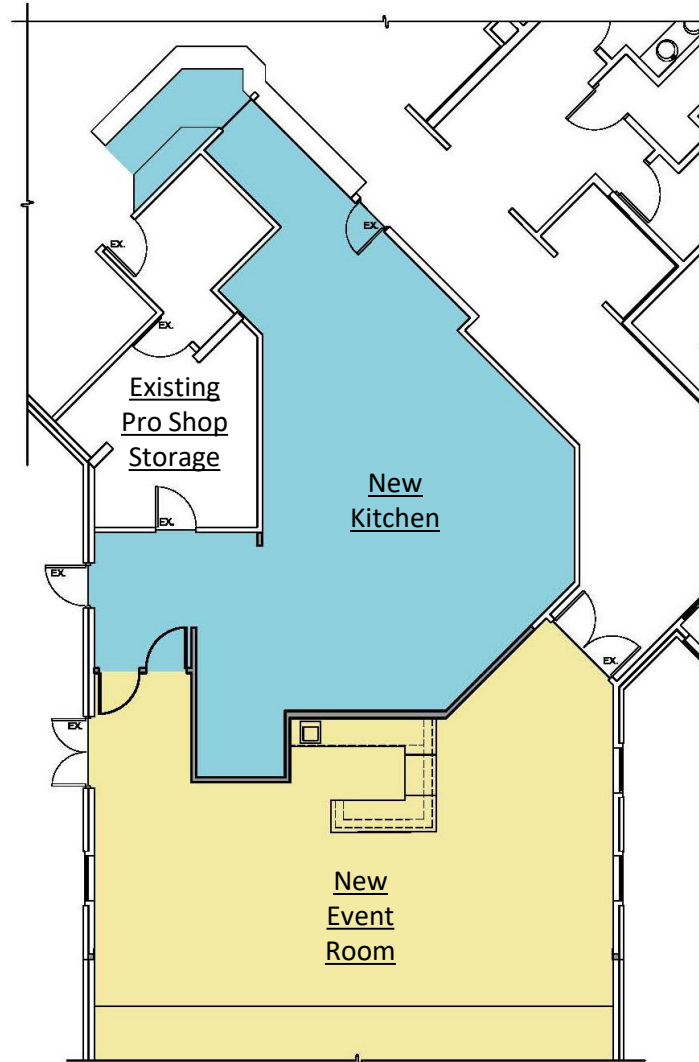




# Existing Sleepy Hollow Club House Event Area



# Renovated Sleepy Hollow Club House



## **New Kitchen**

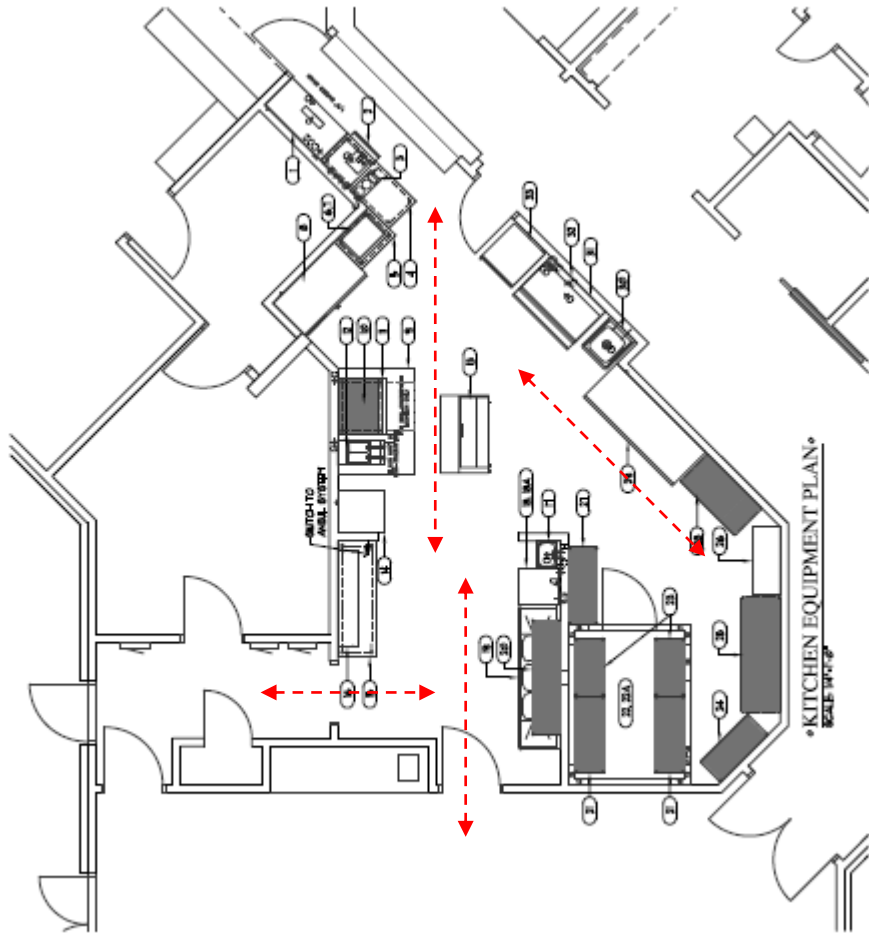
- New Kitchen is approximately 952 sf
- Improved flow for better service
- Equipment and size expand menu and volume of available service

## **New Event Area**

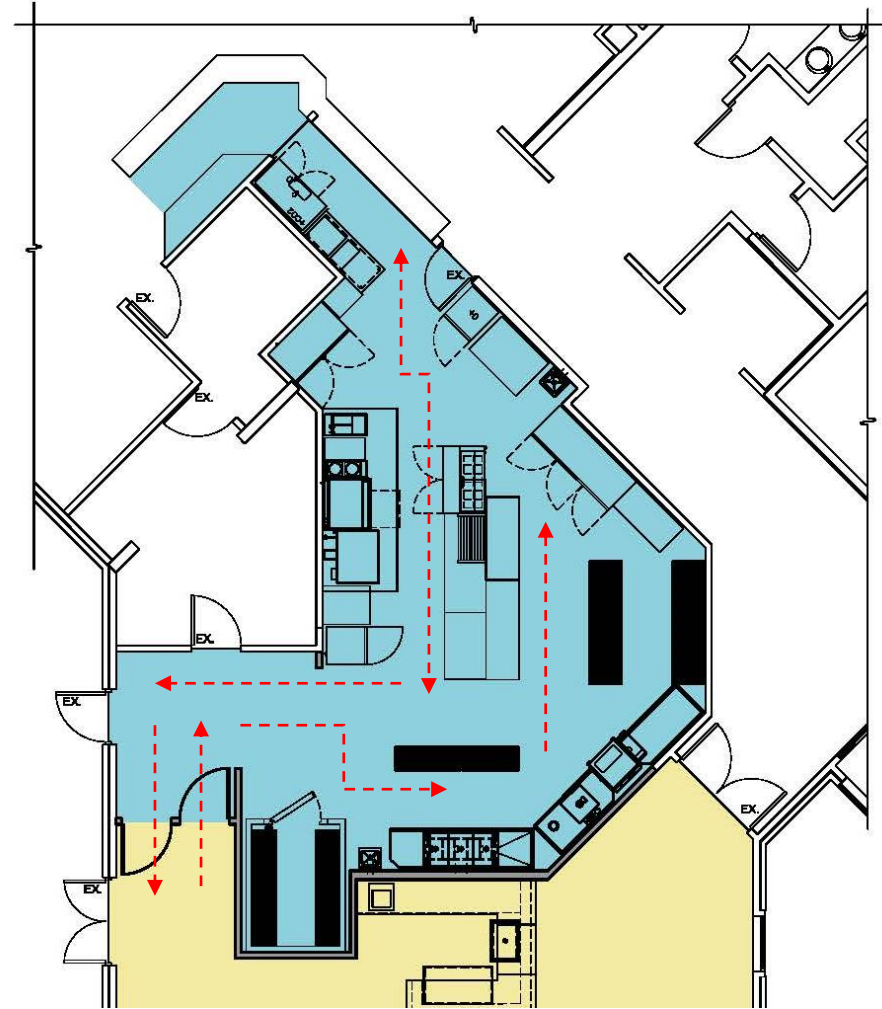
- New Event Room is approximately 2,695 sf
- New formal in bar area for events
- Enlarged Event Room allows for 2-4 additional tables for events

# Sleepy Hollow Club House Kitchen Plan

## Existing Kitchen



## New Kitchen





# TIME TO EXPLORE

Cleveland Metroparks

## Sleepy Hollow Club House Renovations

Brecksville Reservation

